

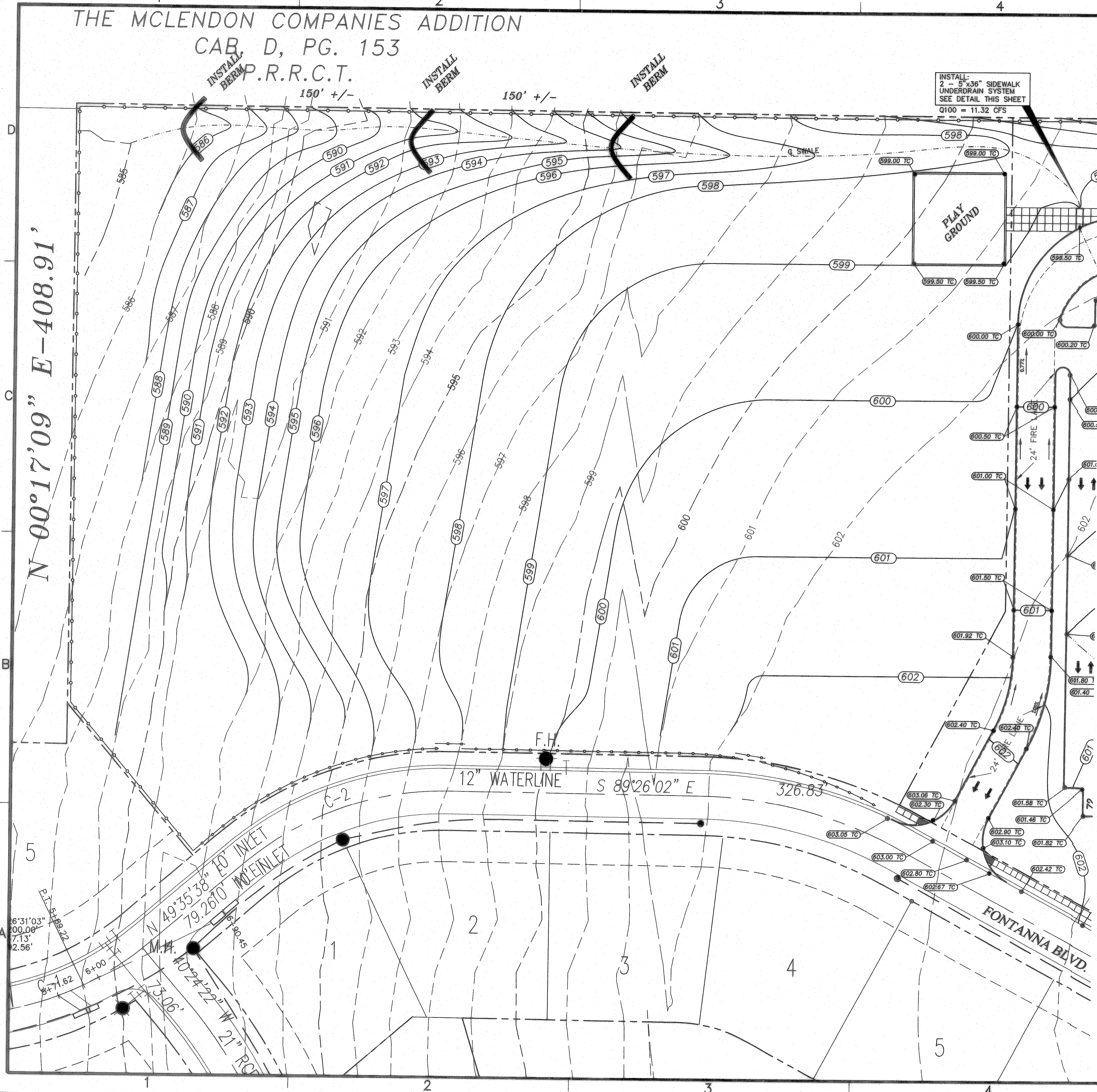
THE MCLENDON COMPANIES ADDITION

CAB. D, PG. 153

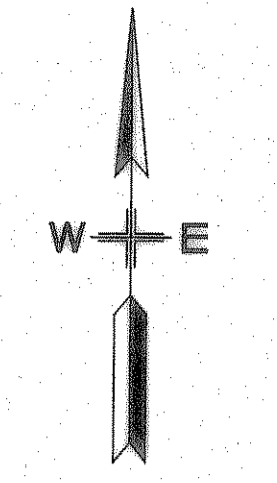
P.R.R.C.T.

N 00°17'09" E - 408.91'

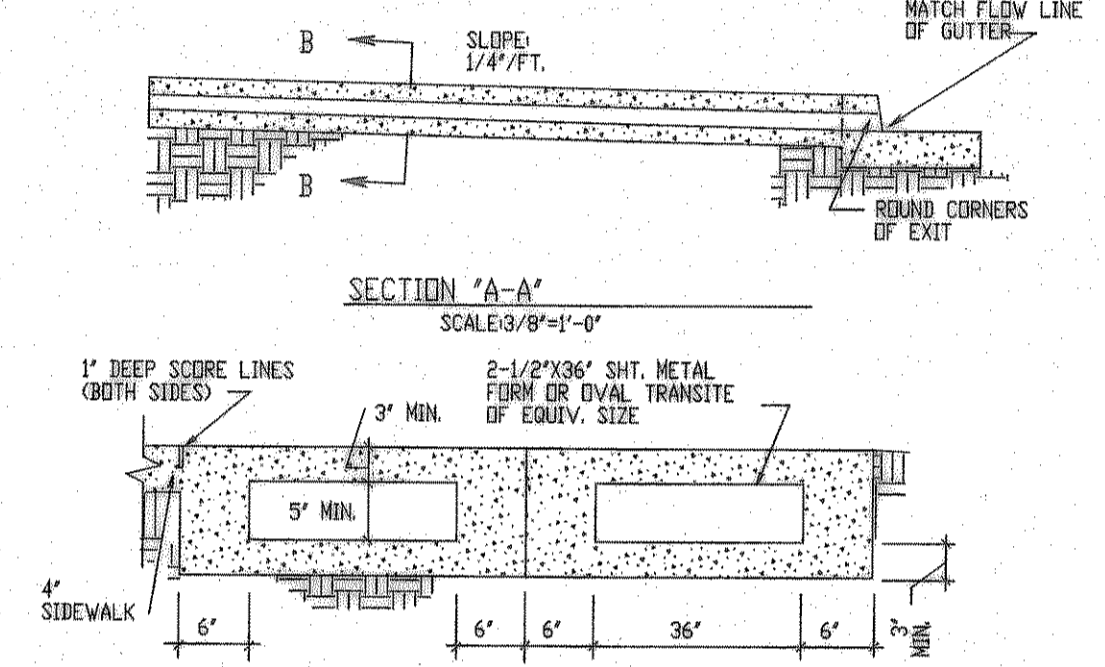
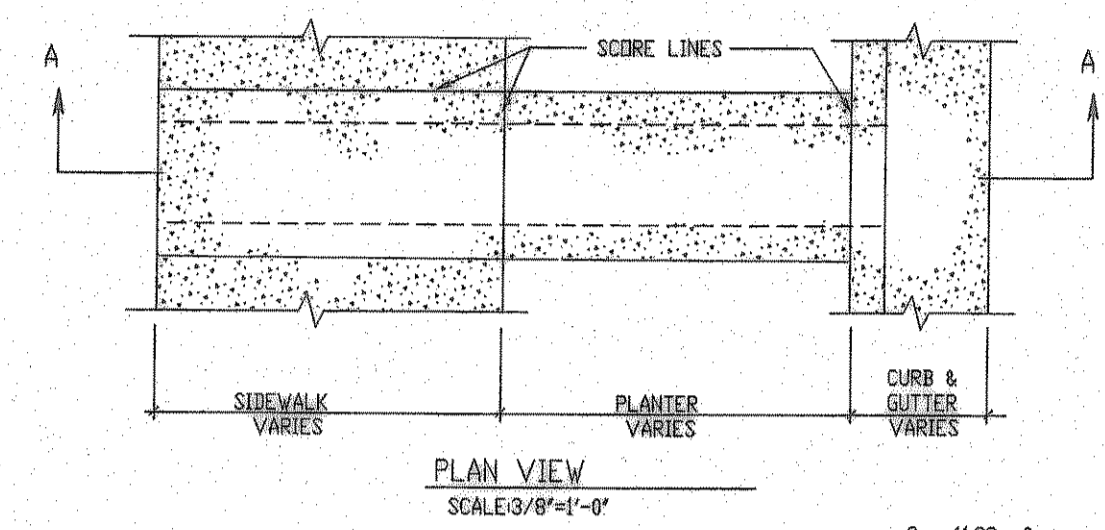
Aug 06, 2007 - 1:07pm User: Cheryl Ann Armijo  
 \\Roberthp\C-DRIVE\ROCKISD\FONTANNA BID SET\FONTANNA-ENG-6\_CITYcomments.dwg



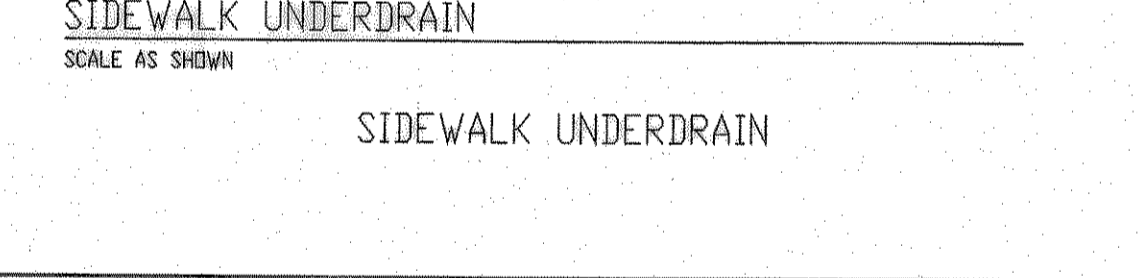
INSTALL:  
 2 - 5"x36" SIDEWALK  
 UNDERDRAIN SYSTEM  
 SEE DETAIL THIS SHEET  
 Q100 = 11.32 CFS



Scale 1" = 30'

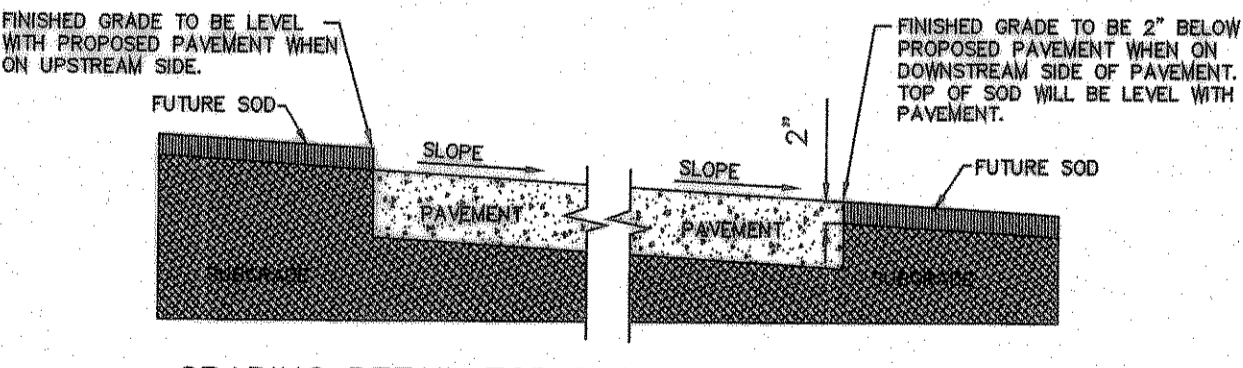


- NOTES:
1. CONCRETE TO BE 3000 PSI
  2. WHERE CURB, GUTTER, AND SIDEWALK IS EXISTING, REMOVE 2\"/>
- PARTIAL ELEVATION:  
 2 - 5' X 36' SIDEWALK UP  
 Q100 = 11.32 cfs  
 S = 0.0038 ft/ft  
 V = 6.59 fpm  
 D = 0.28 Feet



LEGEND

(683.60TW)	= PROPOSED TOP OF WALK
(683.00TP)	= PROPOSED TOP OF PAVEMENT
(683.50TC)	= PROPOSED TOP OF CURB
(684.80EXTC)	= EXISTING TOP OF CURB
---	= EXISTING CONTOUR
---	= PROPOSED CONTOUR
---	= DIRECTION OF FLOW

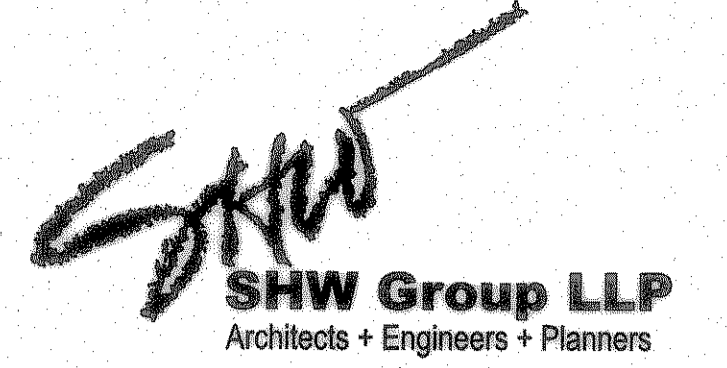


GRADING DETAIL FOR PAVEMENT WITHOUT CURB

RECORD DRAWING  
 This is to certify that changes and corrections have been made to conform to the contractor's record of this project.  
 Signed: *[Signature]* Date: 8/6/07  
 Glenn Engineering Corporation

WEST GRADING PLAN  
 SCALE: 1" = 30'

GLENN ENGINEERING  
 PHONE 972-717-9381 FAX 972-717-2176  
 105 DECKER COURT - SUITE 810 IRVING, TEXAS 75038



Consultants:

CIVIL:  
 GLENN ENGINEERING CORP

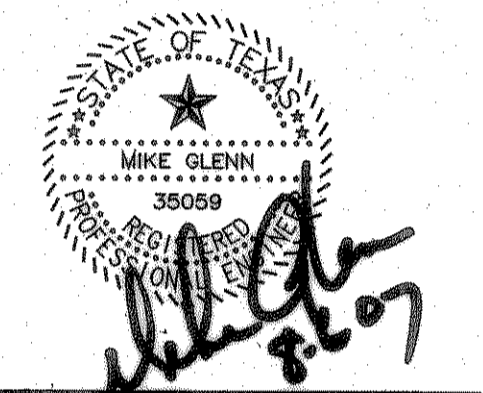
STRUCTURAL:  
 SHW GROUP, LLP

MEP:  
 ESTES McCLURE AND ASSOCIATES.

FOOD SERVICE:  
 H. G. RICE Inc.

LANDSCAPING:  
 GRUBBS RAMSEY

FINAL PLANS  
 FOR BIDDING AND CONSTRUCTION



Rockwall Independent School District

ROCKWALL ELEMENTARY SCHOOL #12  
 ROCKWALL, TEXAS

Project Number: 1441.05.020  
 Drawing Date: 7/18/2006  
 Drawn: R.HOWMAN  
 Checked: RAH  
 Scale: AS SHOWN  
 ACAD File: FONTANNA-ENG-6\_CITYcomments.d  
 © 2006 SHW Group, LLP

- Revisions:
- 1 08/01/2006 CITY COMMENTS
  - 2 08/15/2006 CITY COMMENTS
  - 3 10/23/2006 WATER REVISIONS

Sheet Title:  
**WEST GRADING PLAN**

CG1.02A