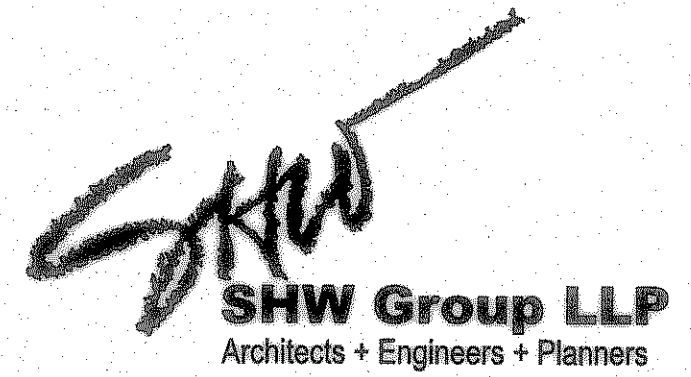


Aug 03, 2007 - 11:13am User: Cheryl Armijo
 \\Roberthp\C-DRIVE\ROCKISD\FONTANNA\FONTANNA_BID.SET\FONTANNA-ENG-6_CITYcomments.dwg



Consultants:
 CIVIL: GLENN ENGINEERING CORP
 STRUCTURAL: SHW GROUP, LLP
 MEP: ESTES MCCLURE AND ASSOCIATES.
 FOOD SERVICE: H. G. RICE Inc.
 LANDSCAPING: GRUBBS RAMSEY

FINAL PLANS
 FOR BIDDING AND CONSTRUCTION



Rockwall Independent School District

ROCKWALL ELEMENTARY SCHOOL #12
 ROCKWALL, TEXAS

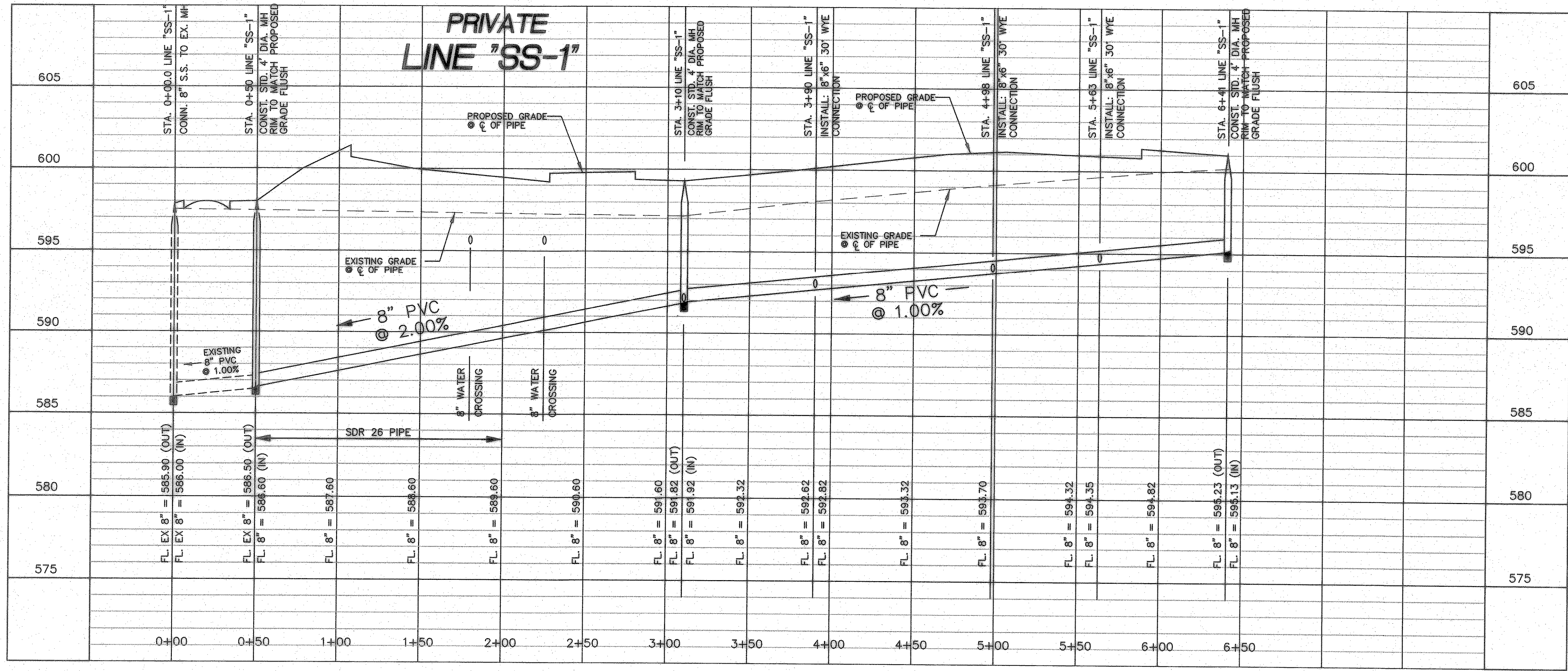
Project Number: 1441.05.020
 Drawing Date: 7/18/2006
 Drawn: R. HOWMAN
 Checked: RAH
 Scale: AS SHOWN
 ACAD File: FONTANNA-ENG-6_CITYcomments.d
 © 2006 SHW Group, LLP

Revisions:

| | | |
|---|------------|-----------------|
| 1 | 06/01/2006 | CITY COMMENTS |
| 2 | 08/15/2006 | CITY COMMENTS |
| 3 | 10/23/2006 | WATER REVISIONS |

Sheet Title:
SANITARY SEWER PROFILE

CU 1.03



NOTE:
 USE THE CITY OF ROCKWALL STANDARDS OF DESIGN AND VERTICAL DETAILS FOR YOUR STANDARD DESIGN DETAILS.

RECORD DRAWING
 This is to certify that changes and corrections have been made to conform to the contractor's record of this project.
 Signed: *[Signature]* Date: 8.2.07
 Glenn Engineering Corporation

SANITARY SEWER PROFILE
 SCALE: 1" = 40' H
 5" V

GLENN ENGINEERING
 PHONE 972-717-9181 FAX 972-717-2076
 105 DECKER COURT - SUITE 610 IRVING, TEXAS 76062