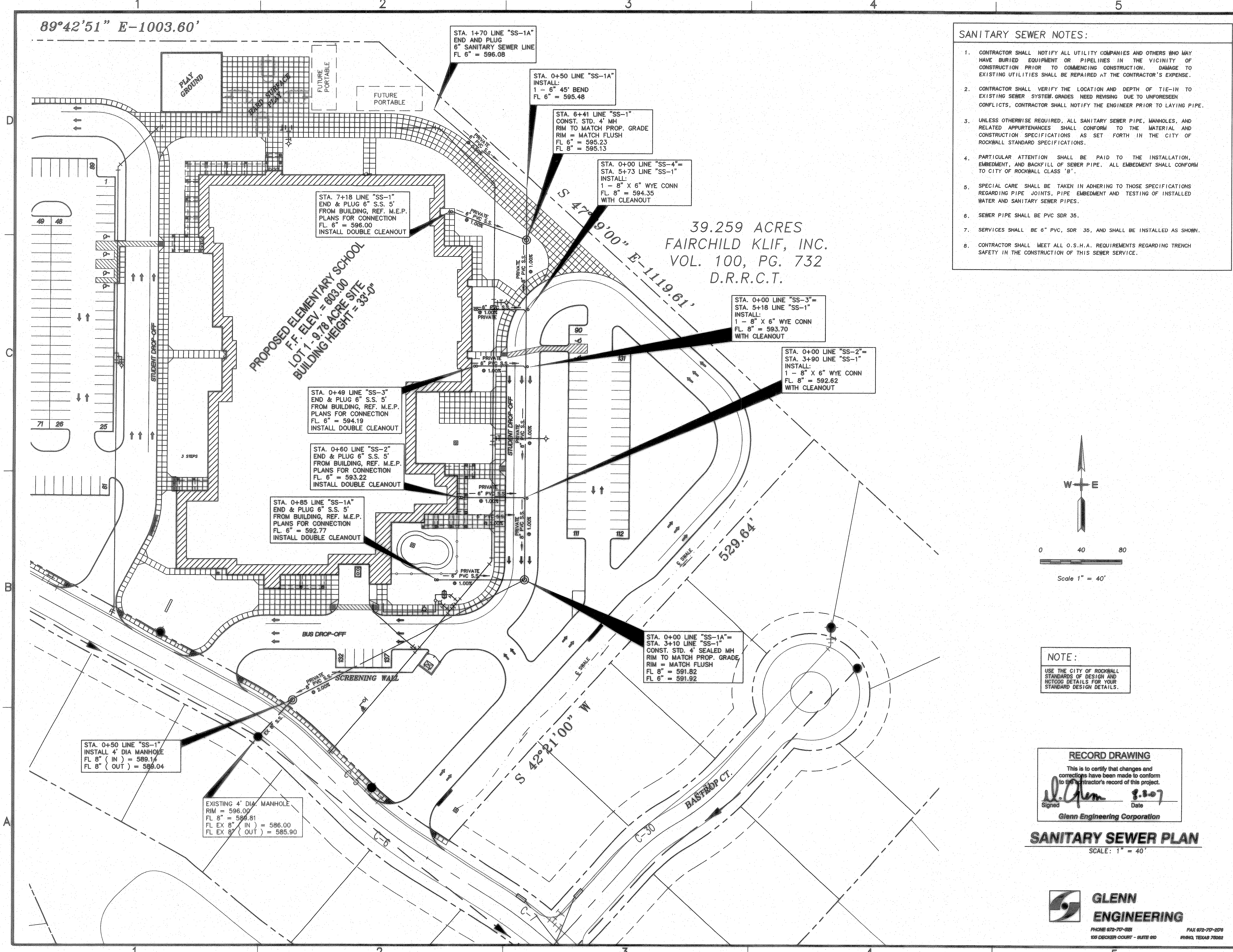
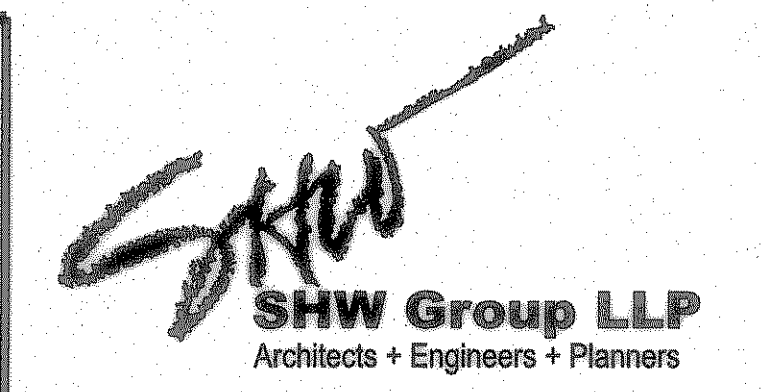


89°42'51" E-1003.60'



39.259 ACRES
 FAIRCHILD KLIF, INC.
 VOL. 100, PG. 732
 D.R.R.C.T.

- SANITARY SEWER NOTES:**
- CONTRACTOR SHALL NOTIFY ALL UTILITY COMPANIES AND OTHERS WHO MAY HAVE BURIED EQUIPMENT OR PIPELINES IN THE VICINITY OF CONSTRUCTION PRIOR TO COMMENCING CONSTRUCTION. DAMAGE TO EXISTING UTILITIES SHALL BE REPAIRED AT THE CONTRACTOR'S EXPENSE.
 - CONTRACTOR SHALL VERIFY THE LOCATION AND DEPTH OF TIE-IN TO EXISTING SEWER SYSTEM GRADES NEED REVISIONS DUE TO UNFORESEEN CONFLICTS. CONTRACTOR SHALL NOTIFY THE ENGINEER PRIOR TO LAYING PIPE.
 - UNLESS OTHERWISE REQUIRED, ALL SANITARY SEWER PIPE, MANHOLES, AND RELATED APPURTENANCES SHALL CONFORM TO THE MATERIAL AND CONSTRUCTION SPECIFICATIONS AS SET FORTH IN THE CITY OF ROCKWALL STANDARD SPECIFICATIONS.
 - PARTICULAR ATTENTION SHALL BE PAID TO THE INSTALLATION, EMBEDMENT, AND BACKFILL OF SEWER PIPE. ALL EMBEDMENT SHALL CONFORM TO CITY OF ROCKWALL CLASS 'B'.
 - SPECIAL CARE SHALL BE TAKEN IN ADHERING TO THOSE SPECIFICATIONS REGARDING PIPE JOINTS, PIPE EMBEDMENT AND TESTING OF INSTALLED WATER AND SANITARY SEWER PIPES.
 - SEWER PIPE SHALL BE PVC SDR 35.
 - SERVICES SHALL BE 6" PVC, SDR 35, AND SHALL BE INSTALLED AS SHOWN.
 - CONTRACTOR SHALL MEET ALL O.S.H.A. REQUIREMENTS REGARDING TRENCH SAFETY IN THE CONSTRUCTION OF THIS SEWER SERVICE.



Consultants:

CIVIL:
GLENN ENGINEERING CORP

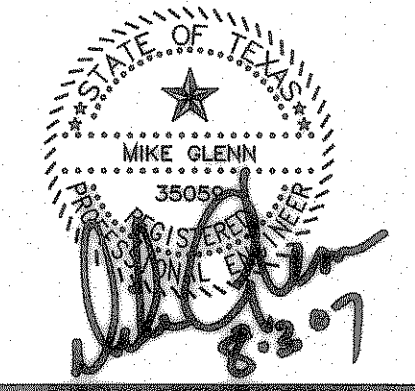
STRUCTURAL:
SHW GROUP, LLP

MEP:
ESTES MCLURE AND ASSOCIATES.

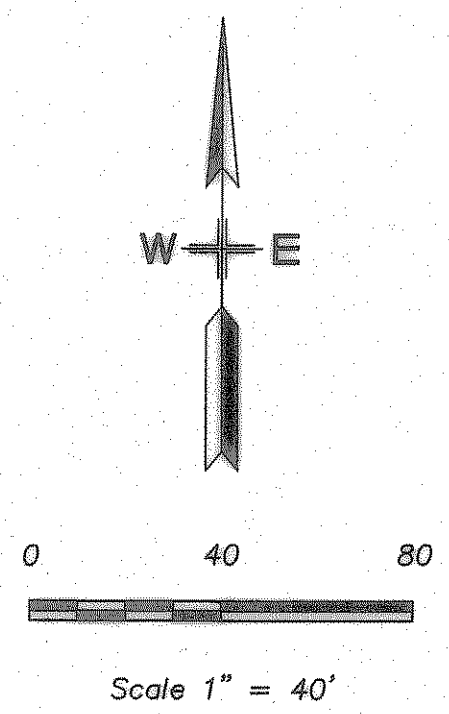
FOOD SERVICE:
H. G. RICE Inc.

LANDSCAPING:
GRUBBS RAMSEY

**FINAL PLANS
 FOR BIDDING AND CONSTRUCTION**



**Rockwall Independent
 School District**



**ROCKWALL
 ELEMENTARY
 SCHOOL #12
 ROCKWALL, TEXAS**

Project Number: 1441.05.020
 Drawing Date: 7/18/2006
 Drawn: R.HOWMAN
 Checked: RAH
 Scale: AS SHOWN
 ACAD File: FONTANNA-ENG-6_CITYcomments.d
 © 2006 SHW Group, LLP

NOTE:
 USE THE CITY OF ROCKWALL
 STANDARDS OF DESIGN AND
 DETAILING FOR YOUR
 STANDARD DESIGN DETAILS.

RECORD DRAWING
 This is to certify that changes and
 corrections have been made to conform
 to the contractor's record of this project.
 Signed: *[Signature]* 8.3.07
 Date: 8.3.07
 Glenn Engineering Corporation

SANITARY SEWER PLAN
 SCALE: 1" = 40'

**GLENN
 ENGINEERING**
 PHONE 972-717-5581 FAX 972-717-2176
 105 DECKER COURT - SUITE 910 IRVING, TEXAS 75062

Revisions:

1	06/01/2006	CITY COMMENTS
2	08/15/2006	CITY COMMENTS
3	10/23/2006	WATER REVISIONS

Sheet Title:
**SANITARY
 SEWER
 PLAN**

CU 1.02

User: Cheryl Ann Armijo
 Aug 03, 2007 - 11:46am
 C:\Robert\pcc-DRIVE\ROCKWALL\FONTANNA\FONTANNA\BID SET\FONTANNA-ENG-6_CITYcomments.dwg