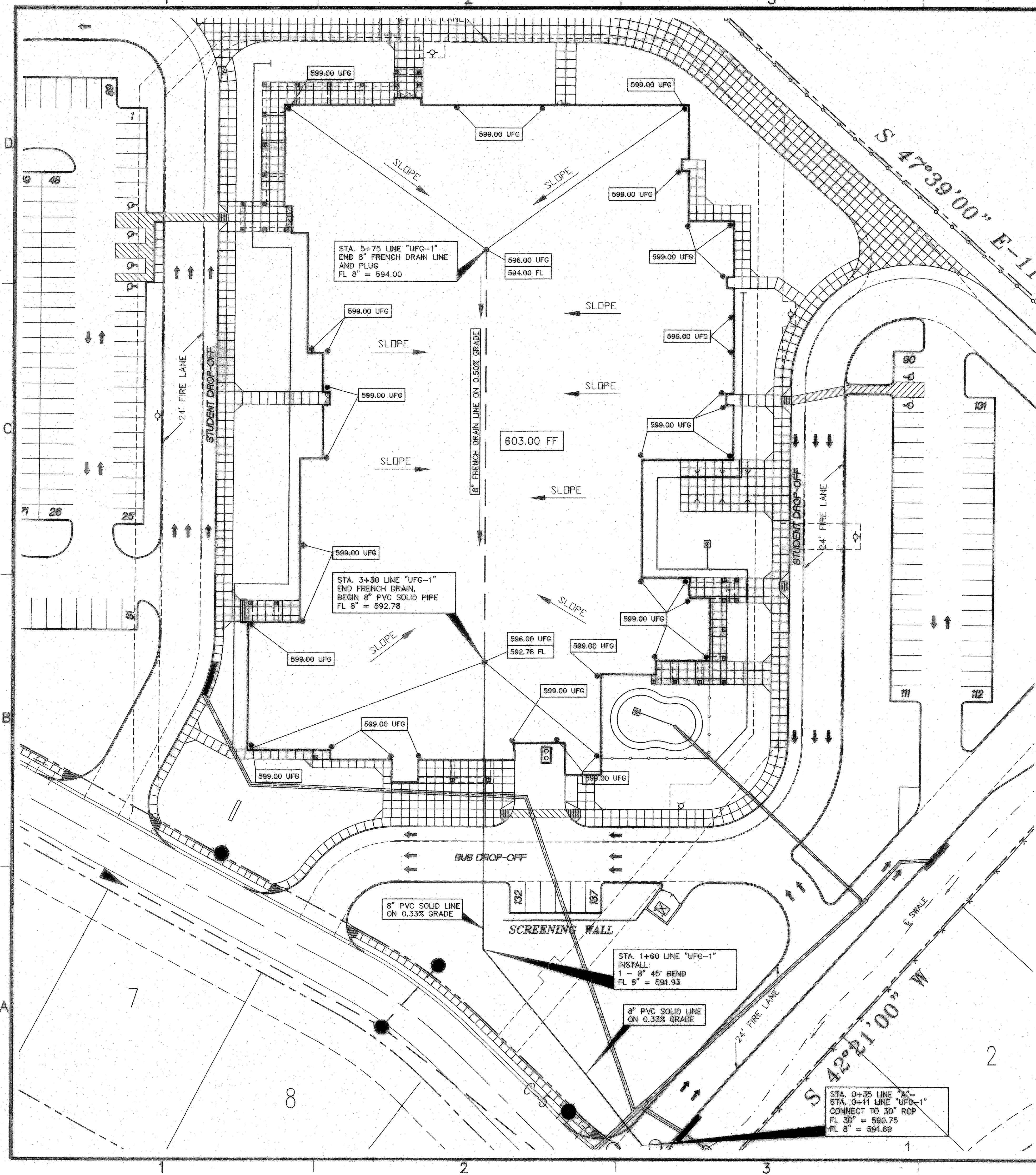
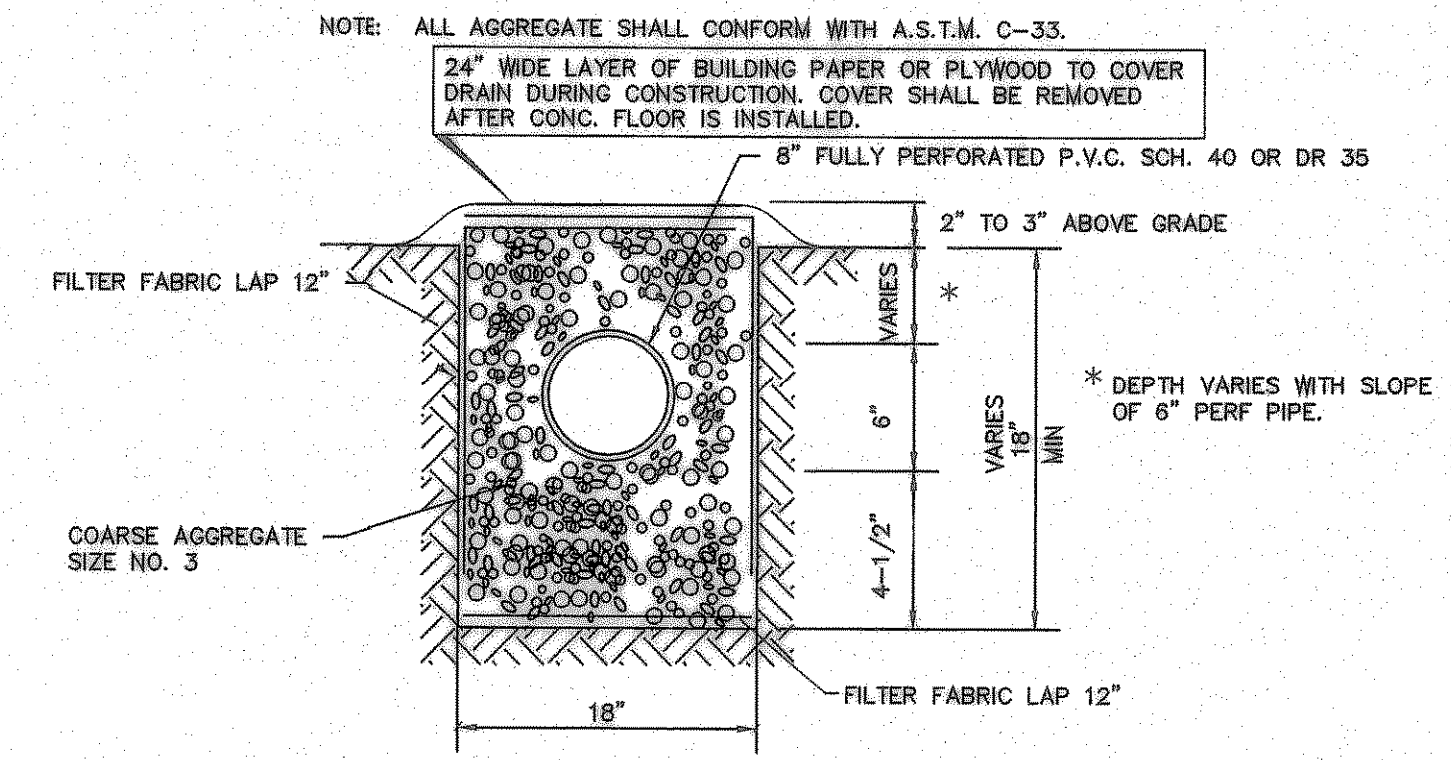


Aug 03, 2007 - 11:11am User: Cheryl Ann Armijo
 \\roberthp\c-drive\rockisd\fontanna\fontanna-bid set\fontanna-eng-6-citycomments.dwg

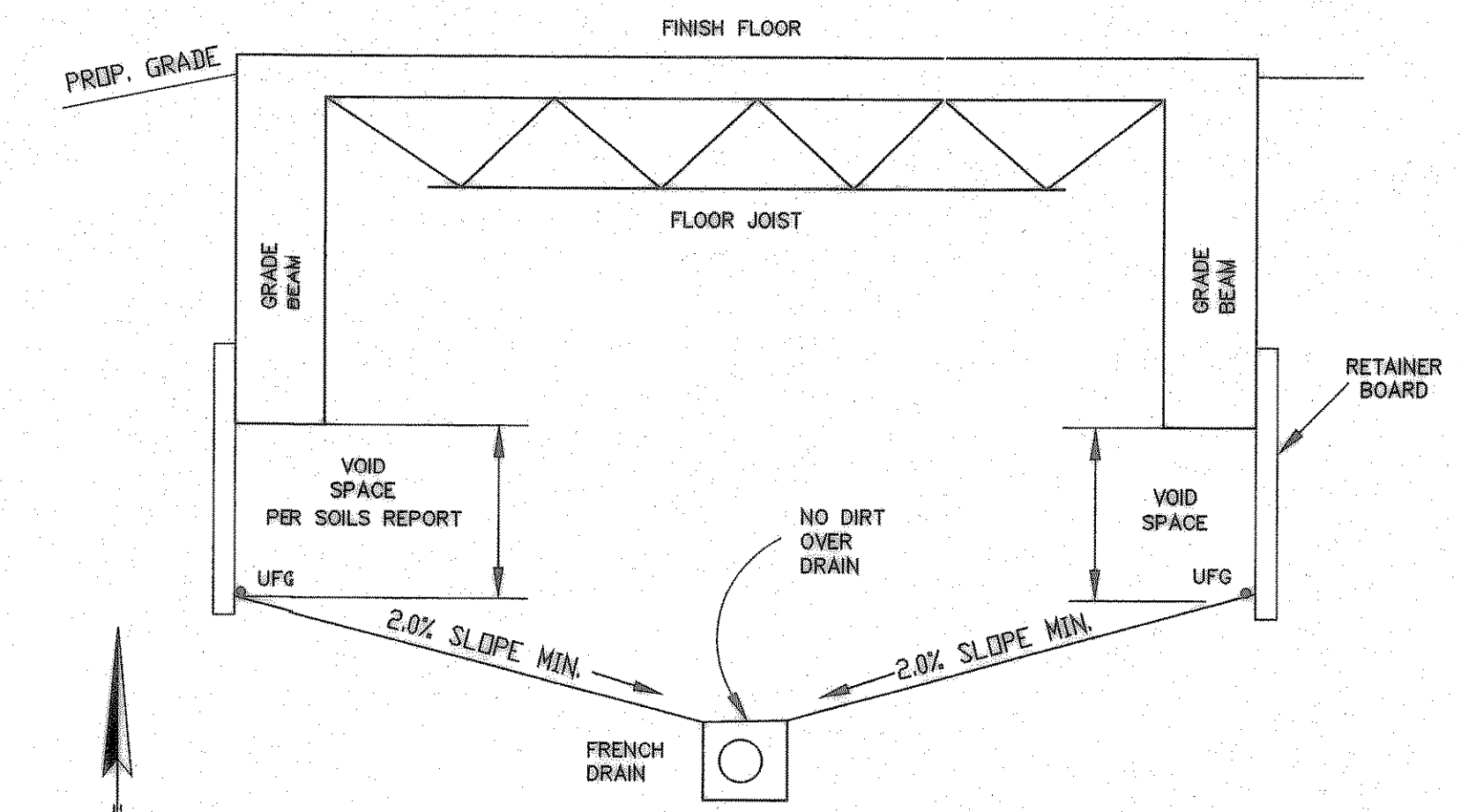


CONTRACTOR SHALL VERIFY ALL EXISTING INVERTS AND ELEVATIONS PRIOR TO CONSTRUCTION.

ALL STORM SEWER CONSTRUCTION TO BE PER CITY OF ROCKWALL STANDARDS.



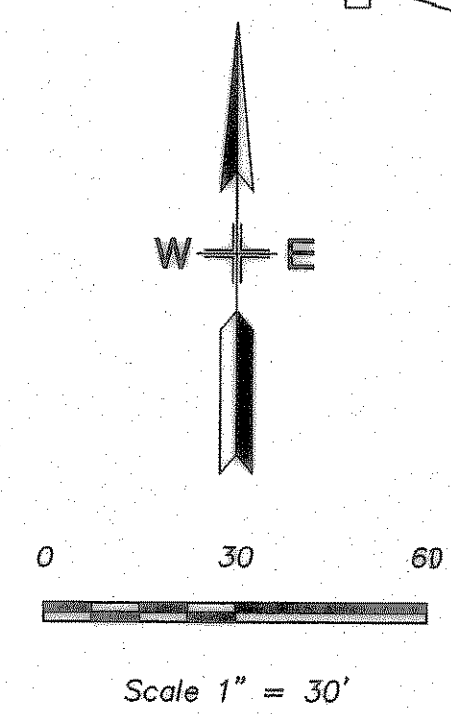
DETAIL TYPE 1 FRENCH DRAIN



UNDER FLOOR GRADING DETAIL

NOTE: SEE STRUCTURAL PLANS FOR ACTUAL BEAM DEPTHS AND VOID SPACE REQUIREMENTS.

NOTE: PRIOR TO JOIST AND DECKING BEING SET IN PLACE ENGINEER MUST APPROVE UNDERFLOOR GRADING.



BENCH MARKS:

BENCHMARK: SQUARE CUT ON TOP OF HEADWALL AT THE MOST NORTHERLY CORNER OF BRIDGE, NORTHEASTERLY SIDE OF FM 205. 1680' +/- NORTHWEST OF CL OF WIMS ROAD. ELEVATION = 529.11

BENCHMARK: CITY OF ROCKWALL, TEXAS CONTROL MONUMENT #929, TOP OF HEADWALL IN NORTHWEST CORNER OF BRIDGE OVER SQUABBLE CREEK. SOUTHWESTERLY SIDE OF FM 205. ELEVATION = 524.65

RECORD DRAWING

This is to certify that changes and corrections have been made to conform to the contractor's record of this project.

Signed: *[Signature]* Date: 8.3.07
 Glenn Engineering Corporation

UNDERFLOOR GRADING PLAN
 SCALE: 1" = 30'

GLENN ENGINEERING
 PHONE 972-717-5551 FAX 972-717-2178
 105 DECKER COURT - SUITE 910 IRVING, TEXAS 75062

SHW Group LLP
 Architects + Engineers + Planners

Consultants:
 CIVIL: GLENN ENGINEERING CORP
 STRUCTURAL: SHW GROUP, LLP
 MEP: ESTES MCLURE AND ASSOCIATES.
 FOOD SERVICE: H. G. RICE Inc.
 LANDSCAPING: GRUBBS RAMSEY

FINAL PLANS FOR BIDDING AND CONSTRUCTION



Rockwall Independent School District

ROCKWALL ELEMENTARY SCHOOL #12
 ROCKWALL, TEXAS

Project Number: 1441.05.020
 Drawing Date: 7/18/2006
 Drawn: R.HOWMAN
 Checked: RAH
 Scale: AS SHOWN
 ACAD File: FONTANNA-ENG-6_CITYcomments.d
 © 2006 SHW Group, LLP

Revisions:
 1 06/01/2006 CITY COMMENTS
 2 08/15/2006 CITY COMMENTS
 3 10/23/2006 WATER REVISIONS

Sheet Title:
UNDERFLOOR GRADING PLAN

CG 1.04