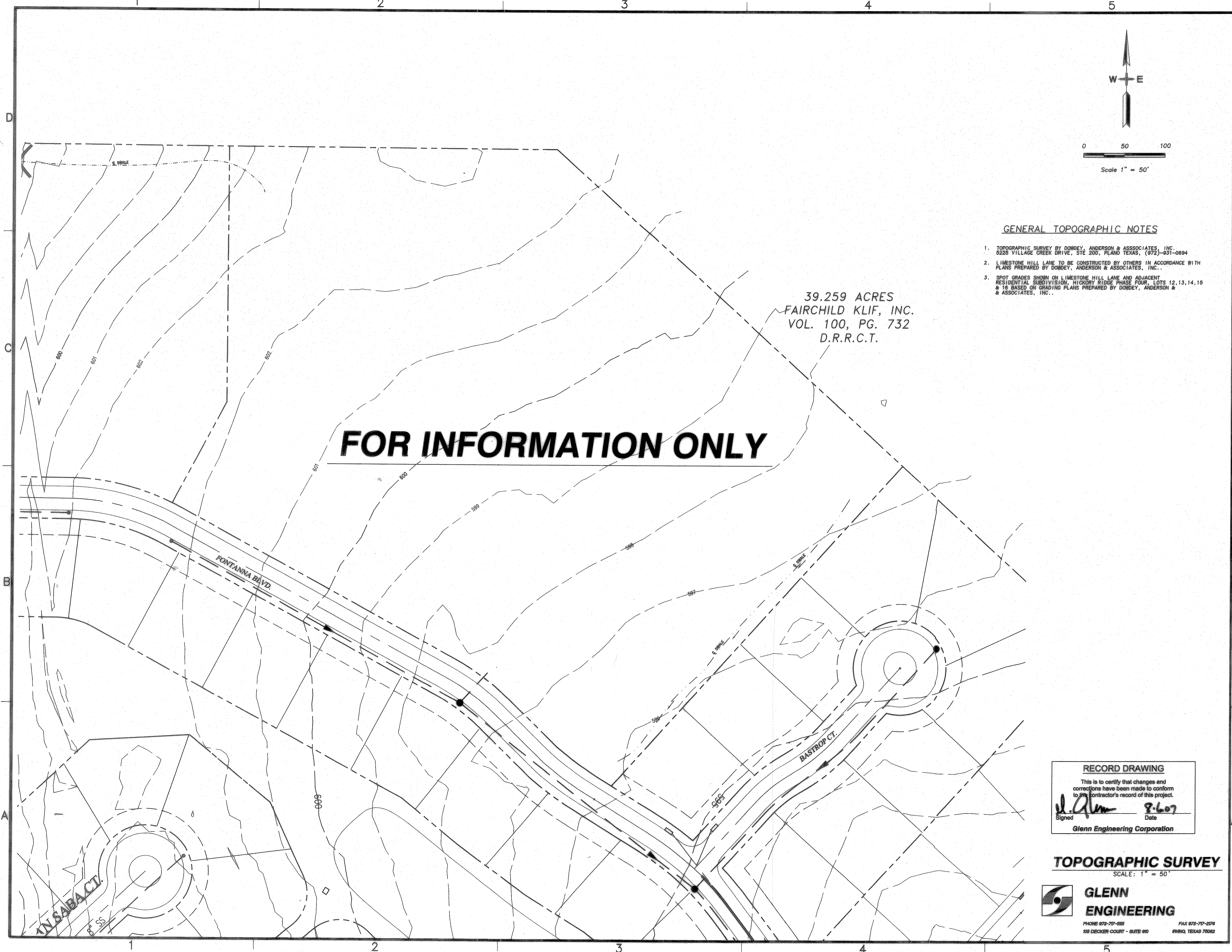
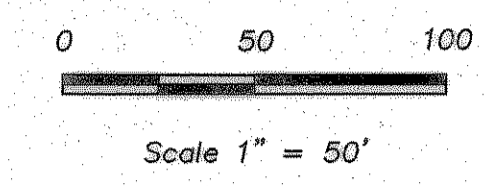
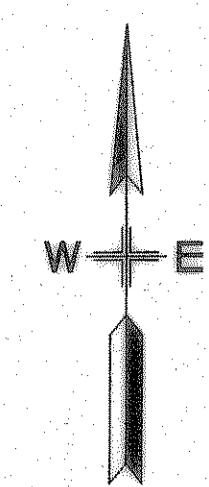


Aug 06, 2007 3:00pm User: Cheryllyn Armijo
D:\roberthp\JC-DRIVE\ROCKWALL\FONTANNA\BID SET\FONTANNA-ENG-6_CITYcomments.dwg



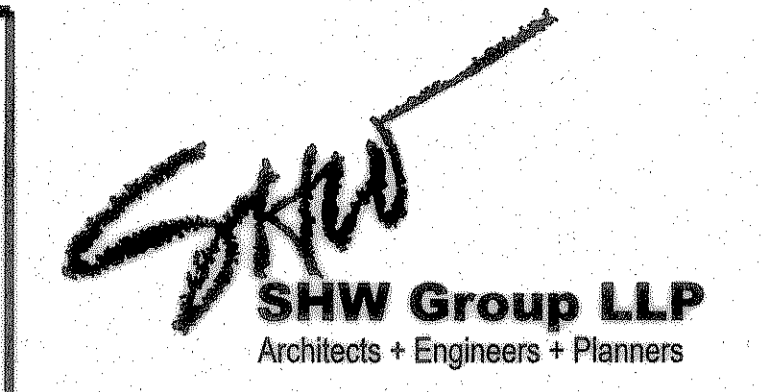
39.259 ACRES
FAIRCHILD KLIF, INC.
VOL. 100, PG. 732
D.R.R.C.T.

FOR INFORMATION ONLY



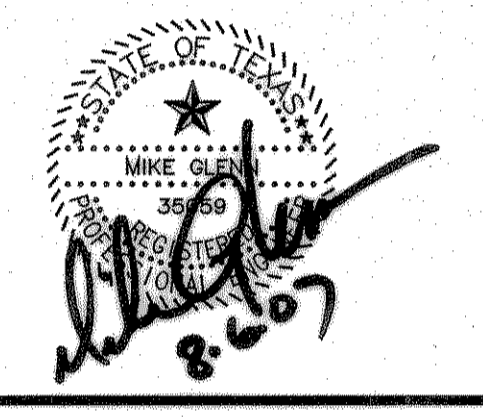
GENERAL TOPOGRAPHIC NOTES

1. TOPOGRAPHIC SURVEY BY DOWDEY, ANDERSON & ASSOCIATES, INC., 6225 VILLAGE CREEK DRIVE, STE 200, PLANO TEXAS, (972) 931-0694
2. LIMESTONE HILL LANE TO BE CONSTRUCTED BY OTHERS IN ACCORDANCE WITH PLANS PREPARED BY DOWDEY, ANDERSON & ASSOCIATES, INC.
3. SPOT GRADES SHOWN ON LIMESTONE HILL LANE AND ADJACENT RESIDENTIAL SUBDIVISION, HICKORY RIDGE PHASE FOUR, LOTS 12, 13, 14, 15 & 16 BASED ON GRADING PLANS PREPARED BY DOWDEY, ANDERSON & ASSOCIATES, INC.



- Consultants:
- CIVIL: GLENN ENGINEERING CORP
 - STRUCTURAL: SHW GROUP, LLP
 - MEP: ESTES McCLURE AND ASSOCIATES.
 - FOOD SERVICE: H. G. RICE Inc.
 - LANDSCAPING: GRUBBS RAMSEY

FINAL PLANS
FOR BIDDING AND CONSTRUCTION



Rockwall Independent School District

ROCKWALL ELEMENTARY SCHOOL #12
ROCKWALL, TEXAS

Project Number: 1441.05.020
 Drawing Date: 7/18/2006
 Drawn: R.HOWMAN
 Checked: RAH
 Scale: AS SHOWN
 ACAD File: FONTANNA-ENG-6_CITYcomments.d
 © 2006 SHW Group, LLP

Revisions:

1	06/01/2006	CITY COMMENTS
2	08/15/2006	CITY COMMENTS
3	10/23/2006	WATER REVISIONS

RECORD DRAWING
 This is to certify that changes and corrections have been made to conform to the contractor's record of this project.
 Signed: *[Signature]* Date: 8-6-07
 Glenn Engineering Corporation

TOPOGRAPHIC SURVEY
SCALE: 1" = 50'

GLENN ENGINEERING
 PHONE 972-717-0181 FAX 972-717-2176
 105 DECKER COURT - SUITE 910 IRVING, TEXAS 75062

Sheet Title:
TOPOGRAPHIC SURVEY

V 1.01