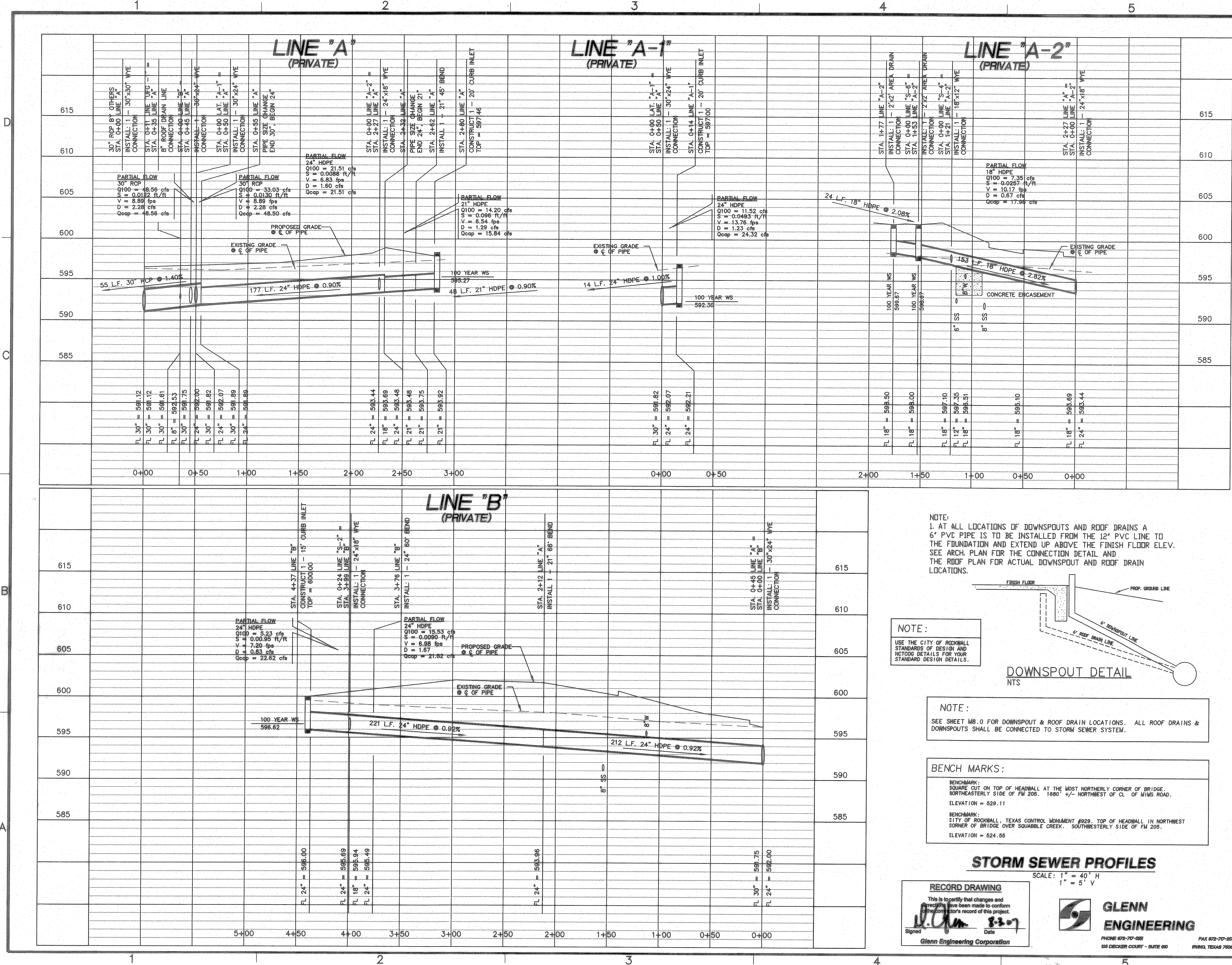


Aug 03, 2007 11:18am User: Cheryl Armijo
 C:\Robert\p\EC-DRIVE\ROCKWALL\SET\FONTANNA\ENG-6_CITYcomments.dwg



NOTE:
 1. AT ALL LOCATIONS OF DOWNSPOUTS AND ROOF DRAINS A 6" PVC PIPE IS TO BE INSTALLED FROM THE 12" PVC LINE TO THE FOUNDATION AND EXTEND UP ABOVE THE FINISH FLOOR ELEV. SEE ARCH. PLAN FOR THE CONNECTION DETAIL AND THE ROOF PLAN FOR ACTUAL DOWNSPOUT AND ROOF DRAIN LOCATIONS.

NOTE:
 USE THE CITY OF ROCKWALL STANDARDS OF DESIGN AND DETAIL FOR YOUR STANDARD DESIGN DETAILS.

NOTE:
 SEE SHEET M8.0 FOR DOWNSPOUT & ROOF DRAIN LOCATIONS. ALL ROOF DRAINS & DOWNSPOUTS SHALL BE CONNECTED TO STORM SEWER SYSTEM.

BENCH MARKS:

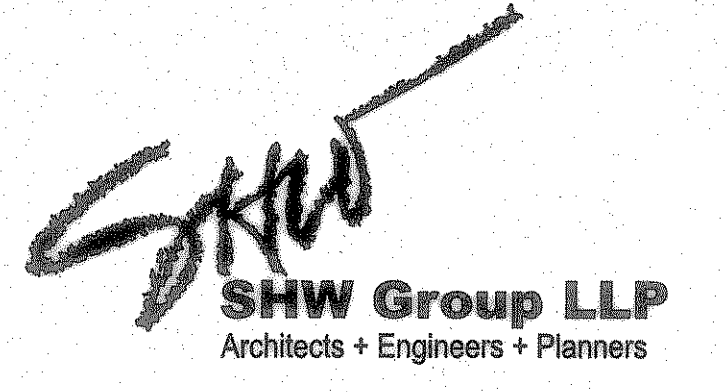
BENCHMARK:
 SQUARE CUT ON TOP OF HEADWALL AT THE MOST NORTHERLY CORNER OF BRIDGE. NORTHEASTERLY SIDE OF FM 205. 1880' +/- NORTHWEST OF CL OF MIMS ROAD.
 ELEVATION = 529.11

BENCHMARK:
 CITY OF ROCKWALL, TEXAS CONTROL MONUMENT #929. TOP OF HEADWALL IN NORTHWEST CORNER OF BRIDGE OVER SQUABBLE CREEK. SOUTHWESTERLY SIDE OF FM 205.
 ELEVATION = 524.55

STORM SEWER PROFILES
 SCALE: 1" = 40' H
 1" = 5' V

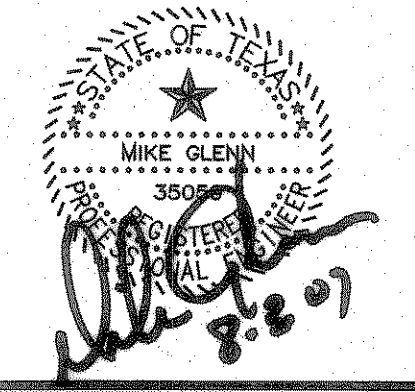
RECORD DRAWING
 This is to certify that changes and corrections have been made to conform to the contractor's record of this project.
 Signed: *[Signature]* Date: 8-2-07
 Glenn Engineering Corporation

GLENN ENGINEERING
 PHONE 972-717-9181 FAX 972-717-9176
 105 DECKER COURT - SUITE 910 IRVING, TEXAS 75038



Consultants:
 CIVIL: GLENN ENGINEERING CORP
 STRUCTURAL: SHW GROUP, LLP
 MEP: ESTES MCLURE AND ASSOCIATES.
 FOOD SERVICE: H. G. RICE Inc.
 LANDSCAPING: GRUBBS RAMSEY

FINAL PLANS FOR BIDDING AND CONSTRUCTION



Rockwall Independent School District

**ROCKWALL ELEMENTARY SCHOOL #12
 ROCKWALL, TEXAS**

Project Number: 1441.05.020
 Drawing Date: 7/18/2006
 Drawn: R.HOWMAN
 Checked: RAH
 Scale: AS SHOWN
 ACAD File: FONTANNA-ENG-6_CITYcomments.d
 © 2006 SHW Group, LLP

Revisions:
 1 06/01/2006 CITY COMMENTS
 2 08/15/2006 CITY COMMENTS
 3 10/23/2006 WATER REVISIONS

Sheet Title:
STORM PROFILES

CU 1.07