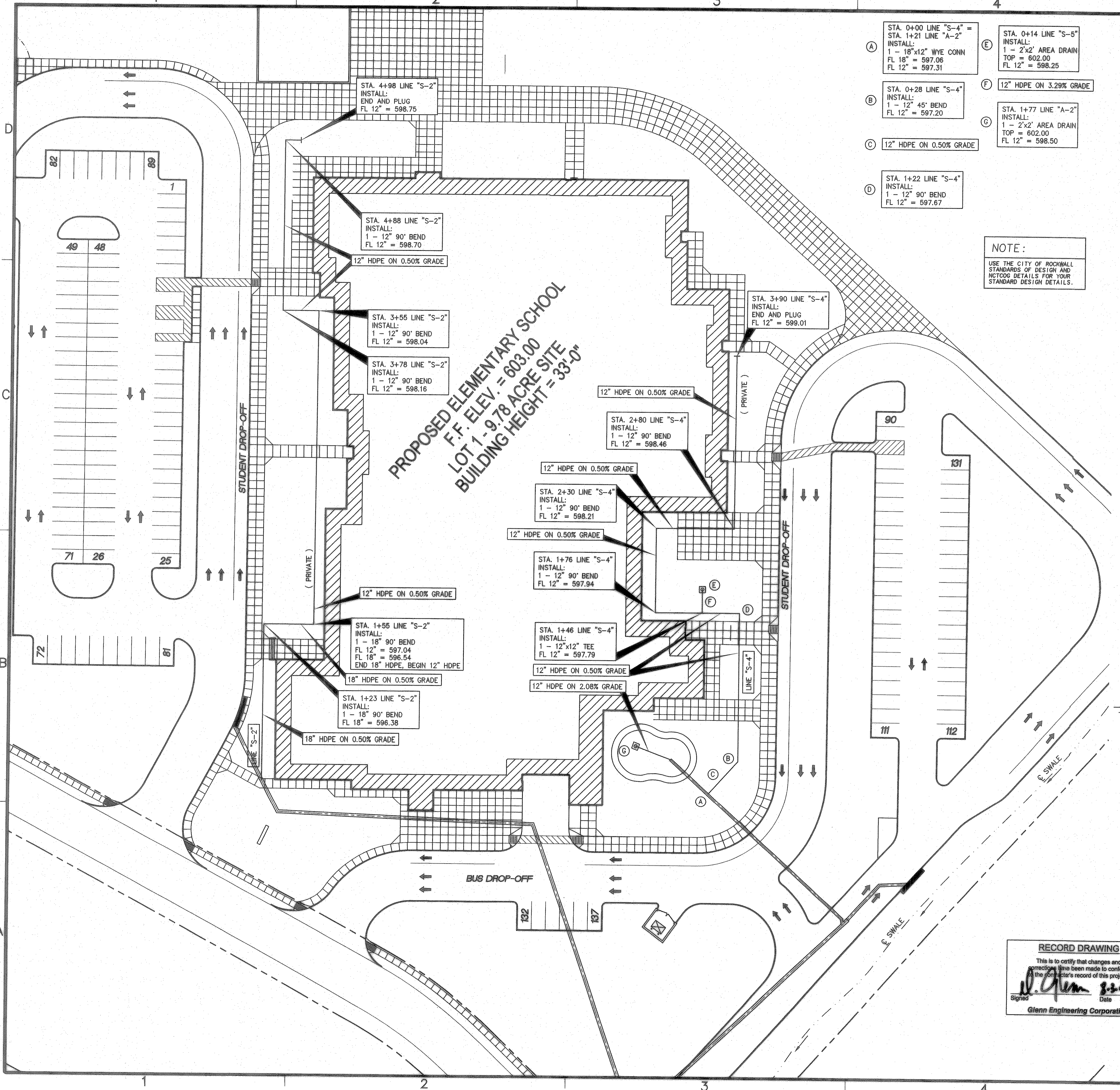


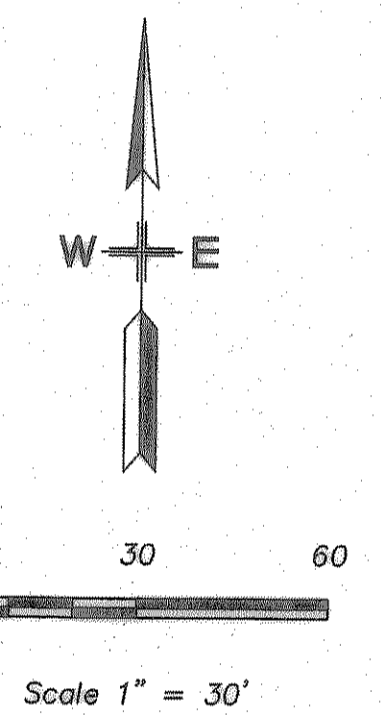
Aug 03, 2007 11:47am
 C:\Robert\p10-DRIVE\ROCK\ISD\FONTANNA\FONTANNA\BID SET\FONTANNA-ENG-6_CITYcomments.dwg



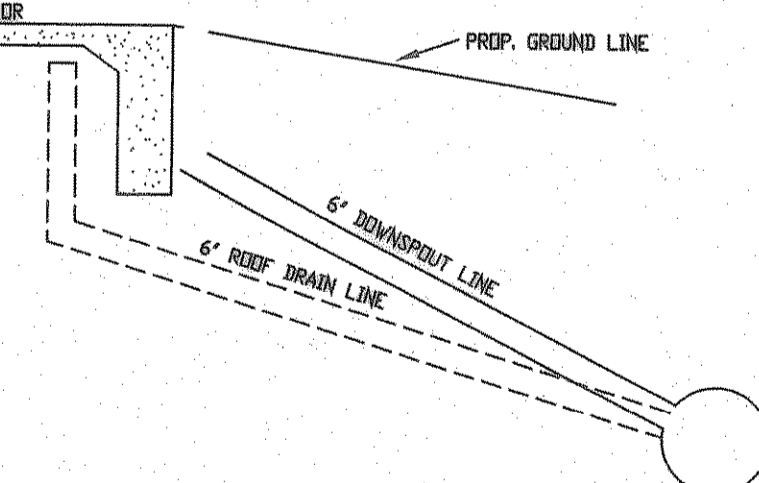
- (A) STA. 0+00 LINE "S-4" = STA. 1+21 LINE "A-2" INSTALL: 1 - 18"x12" WYE CONN FL 18" = 597.06 FL 12" = 597.31
- (B) STA. 0+28 LINE "S-4" INSTALL: 1 - 12" 45° BEND FL 12" = 597.20
- (C) 12" HDPE ON 0.50% GRADE
- (D) STA. 1+22 LINE "S-4" INSTALL: 1 - 12" 90° BEND FL 12" = 597.67
- (E) STA. 0+14 LINE "S-5" INSTALL: 1 - 2'x2' AREA DRAIN TOP = 602.00 FL 12" = 598.25
- (F) 12" HDPE ON 3.29% GRADE
- (G) STA. 1+77 LINE "A-2" INSTALL: 1 - 2'x2' AREA DRAIN TOP = 602.00 FL 12" = 598.50

NOTE:
 USE THE CITY OF ROCKWALL STANDARDS OF DESIGN AND DETAIL FOR YOUR STANDARD DESIGN DETAILS.

- GENERAL STORM SEWER NOTES:**
- ALL CONSTRUCTION TO BE IN ACCORDANCE WITH THESE PLANS AND CITY OF ROCKWALL STANDARDS AND SPECIFICATIONS.
 - PRIOR TO STARTING CONSTRUCTION, THE CONTRACTOR SHALL MAKE CERTAIN THAT ALL REQUIRED PERMITS AND APPROVALS HAVE BEEN OBTAINED. NO CONSTRUCTION OR FABRICATION SHALL BEGIN UNTIL THE CONTRACTOR HAS RECEIVED AND THOROUGHLY REVIEWED ALL PLANS AND OTHER DOCUMENTS APPROVED BY ALL OF THE PERMITTING AUTHORITIES.
 - ALL WORK SHALL BE PERFORMED IN ACCORDANCE WITH THESE PLANS AND SPECIFICATIONS AND THE REQUIREMENTS AND STANDARDS OF THE LOCAL GOVERNING AUTHORITY.
 - IN THE EVENT AN ITEM IS NOT COVERED IN THE CITY OF ROCKWALL SPECIFICATIONS, THE ENGINEER'S DECISION SHALL APPLY.
 - BARRICADING, TRAFFIC CONTROL, AND PROJECT SIGNS SHALL CONFORM TO "STATE DEPARTMENT OF HIGHWAYS AND PUBLIC TRANSPORTATION BARRICADING AND CONSTRUCTION STANDARDS".
 - THE GENERAL CONTRACTOR AND ALL SUB-CONTRACTORS SHALL VERIFY THE SUITABILITY OF ALL EXISTING AND PROPOSED SITE CONDITIONS INCLUDING GRADES AND DIMENSIONS BEFORE COMMENCEMENT OF ANY CONSTRUCTION. IN THE EVENT OF ANY CONFLICT AND PRIOR TO COMMENCEMENT OF ANY CONSTRUCTION, IMMEDIATELY NOTIFY ENGINEER. MINOR ADJUSTMENTS OF FINISH GRADE TO ACCOMPLISH SPOT DRAINAGE ARE ACCEPTABLE, IF NECESSARY, UPON PRIOR APPROVAL OF ENGINEER. PAVING INSTALLED SHALL "FLUSH OUT" AT ANY JUNCTURE WITH EXISTING PAVING.
 - THE LOCATIONS OF UNDERGROUND UTILITIES SHOWN ON THIS PLAN ARE BASED ON FIELD SURVEYS AND LOCAL UTILITY COMPANY RECORDS. IT SHALL BE THE CONTRACTOR'S FULL RESPONSIBILITY TO CONTACT THE VARIOUS UTILITY COMPANIES TO LOCATE THEIR UTILITIES PRIOR TO STARTING CONSTRUCTION.
 - CONTRACTOR SHALL VERIFY ALL EXISTING INVERTS, RIM ELEVATIONS AND SIZES PRIOR TO CONSTRUCTION.
 - ALL NON RCP DRAIN PIPE SHALL BE PVC SCH 40, ADS OR APPROVED EQUAL.
 - ALL RCP SHALL BE CLASS III.
 - W.E. AS INDICATED ON INLET CALLS INDICATES WATER ELEVATION AT INLET DURING 100 YEAR STORM EVENT.
 - ALL SIGNS TO BE PERMITTED SEPARATELY THROUGH THE CITY. LOCATION NOT APPROVED BY THIS SET OF PLANS.



NOTE:
 SEE SHEET MP 8.0 FOR DOWNSPOUT, CANOPY'S & ROOF DRAIN LOCATIONS. ALL ROOF DRAINS, CANOPY'S AND DOWNSPOUTS SHALL BE CONNECTED TO STORM SEWER SYSTEM.



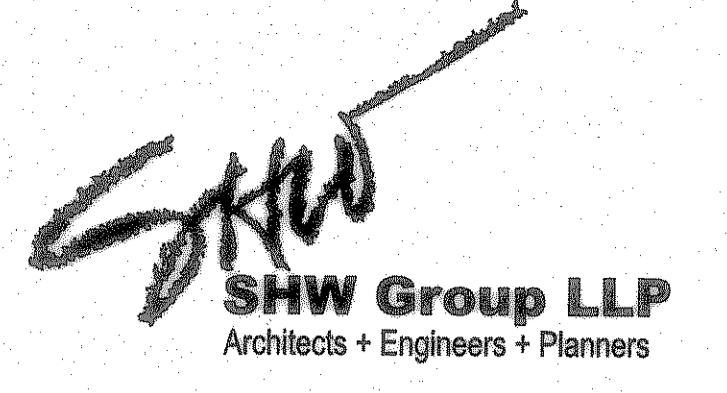
DOWNSPOUT DETAIL
 NTS

NOTE:
 1. AT ALL LOCATIONS OF DOWNSPOUTS, CANOPY'S AND ROOF DRAINS A 6" PVC PIPE IS TO BE INSTALLED FROM THE 12" PVC LINE TO THE FOUNDATION AND EXTEND UP ABOVE THE FINISH FLOOR ELEV. SEE ARCH. PLAN FOR THE CONNECTION DETAIL AND THE ROOF PLAN FOR ACTUAL DOWNSPOUT, CANOPY'S AND ROOF DRAIN LOCATIONS.

RECORD DRAWING
 This is to certify that changes and corrections have been made to conform the contractor's record of this project.
 Signed: *[Signature]* Date: 8-3-07
 Glenn Engineering Corporation

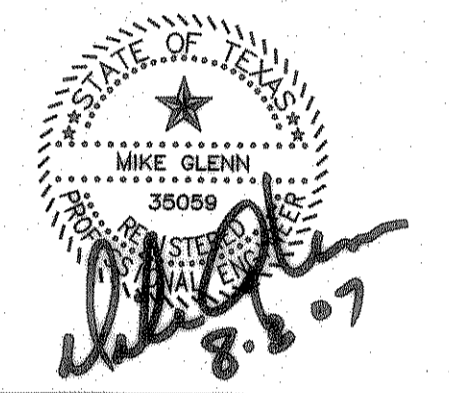
STORM SEWER PLAN
 SCALE: 1" = 30'

GLENN ENGINEERING
 PHONE 972-777-9381 FAX 972-777-8758
 100 DECKER COURT - SUITE 910 PLANO, TEXAS 75082



Consultants:
 CIVIL: GLENN ENGINEERING CORP
 STRUCTURAL: SHW GROUP, LLP
 MEP: ESTES MCLURE AND ASSOCIATES.
 FOOD SERVICE: H. G. RICE Inc.
 LANDSCAPING: GRUBBS RAMSEY

FINAL PLANS FOR BIDDING AND CONSTRUCTION



Rockwall Independent School District

ROCKWALL ELEMENTARY SCHOOL #12
 ROCKWALL, TEXAS

Project Number: 1441.05.020
 Drawing Date: 7/18/2006
 Drawn: R.HOWMAN
 Checked: RAH
 Scale: AS SHOWN
 ACAD File: FONTANNA-ENG-6_CITYcomments.d
 © 2006 SHW Group, LLP

Revisions:
 1 06/01/2006 CITY COMMENTS
 2 08/15/2006 CITY COMMENTS
 3 10/23/2006 WATER REVISIONS

Sheet Title:
ROOF DRAIN PLAN

CU 1.05