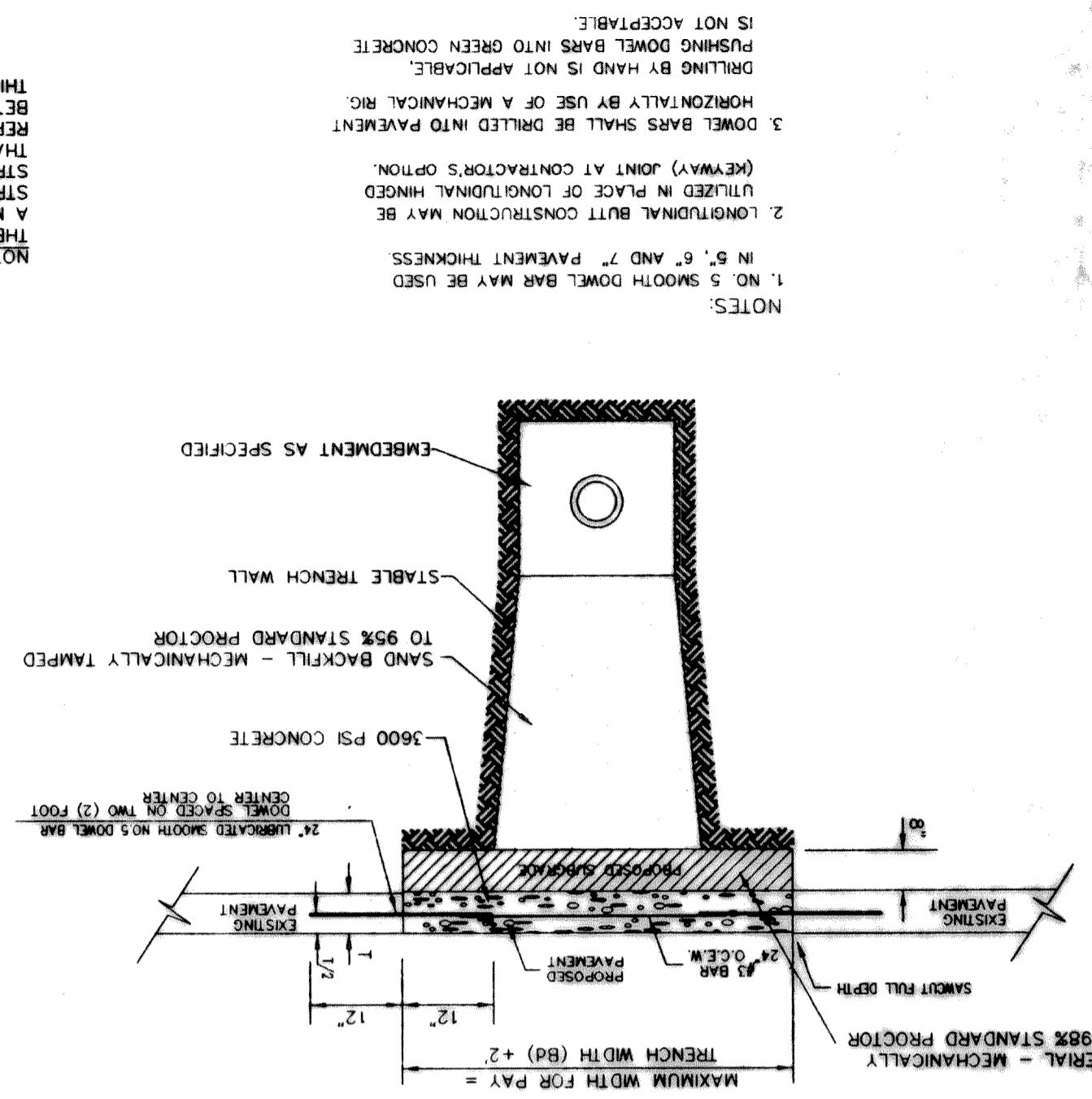
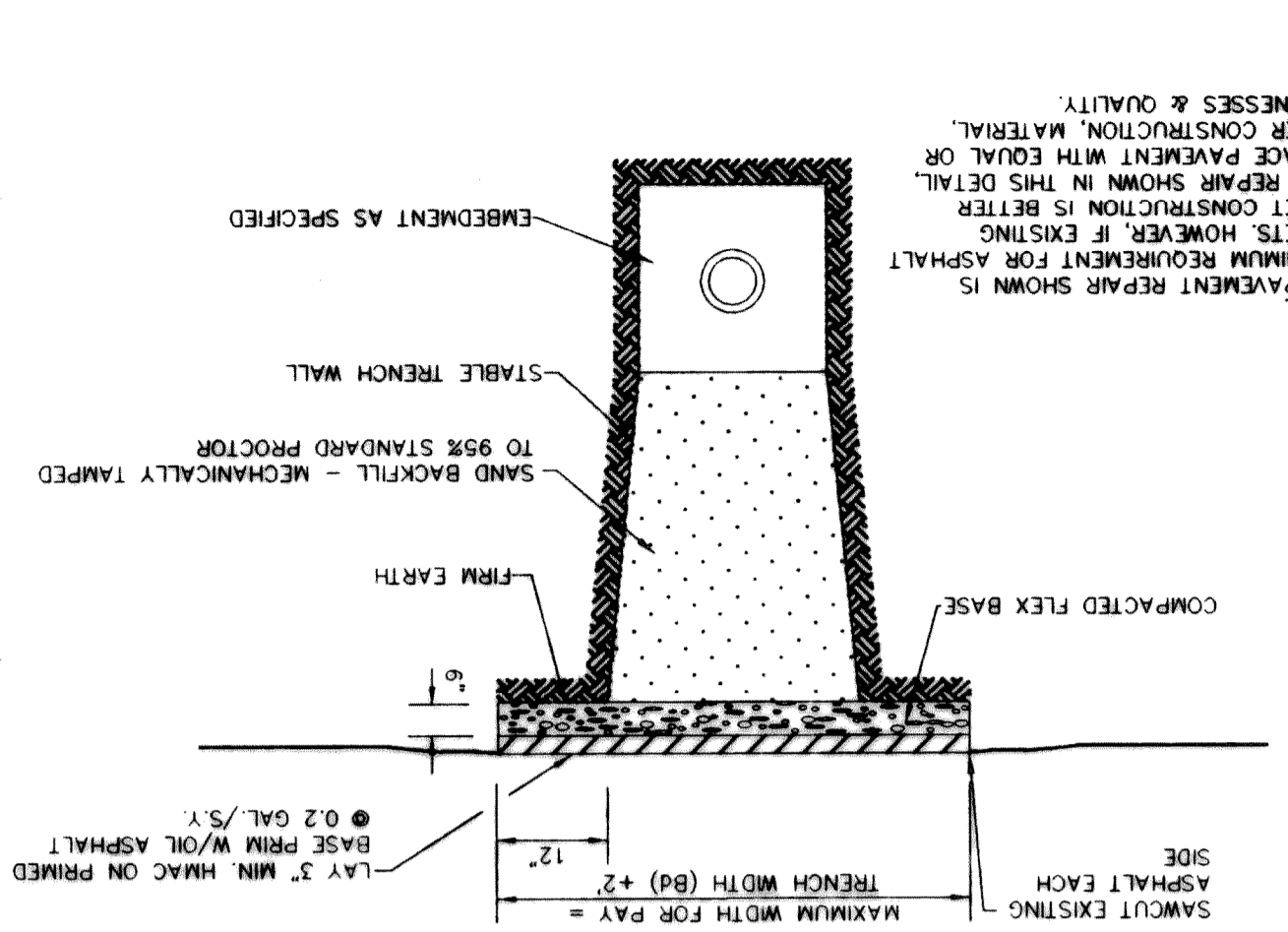


EMBEDMENT UNDER CONCRETE STREETS & PAVEMENT REPAIR DETAIL



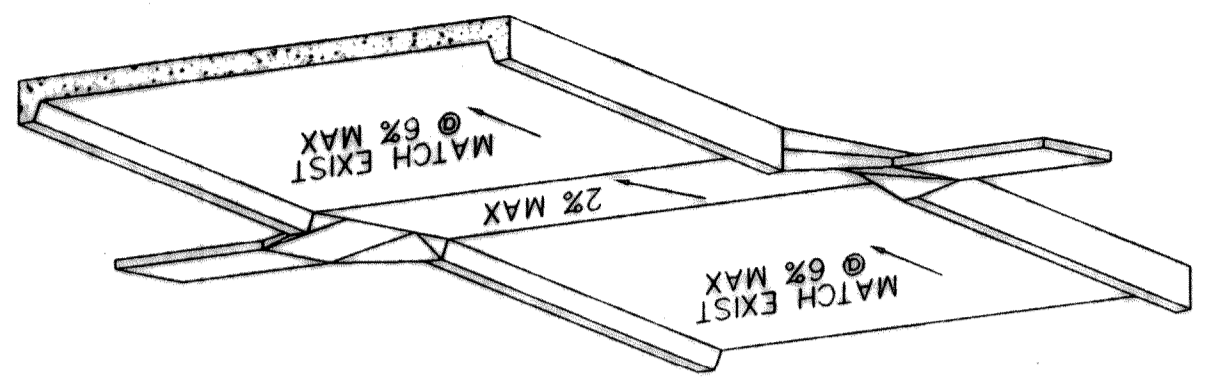
NOTES:
 1. NO 5 SMOOTH DOWEL BAR MAY BE USED IN 5", 6" AND 7" PAVEMENT THICKNESS
 2. LONGITUDINAL JOINT CONSTRUCTION MAY BE USED IN PLACE OF LONGITUDINAL HINGED JOINTS AT CONTRACTOR'S OPTION.
 3. DOWEL BARS SHALL BE DRILLED INTO PAVEMENT HORIZONTALLY BY USE OF A MECHANICAL ROD. DRILLING BY HAND IS NOT APPLICABLE. PUSHING DOWEL BARS INTO GREEN CONCRETE IS NOT ACCEPTABLE.

EMBEDMENT UNDER ASPHALT STREETS & PAVEMENT REPAIR DETAIL



NOTE:
 THE PAVEMENT REPAIR SHOWN IS A MINIMUM REQUIREMENT FOR ASPHALT STREETS. HOWEVER, IF EXISTING STREET CONSTRUCTION IS BETTER THAN REPAIR SHOWN IN THIS DETAIL REPLACE PAVEMENT WITH EQUAL OR BETTER CONSTRUCTION MATERIAL. DOWEL BARS SHALL BE DRILLED INTO PAVEMENT HORIZONTALLY BY USE OF A MECHANICAL ROD. DRILLING BY HAND IS NOT APPLICABLE. PUSHING DOWEL BARS INTO GREEN CONCRETE IS NOT ACCEPTABLE.

HANDICAP RAMP AND CROSSING DETAIL

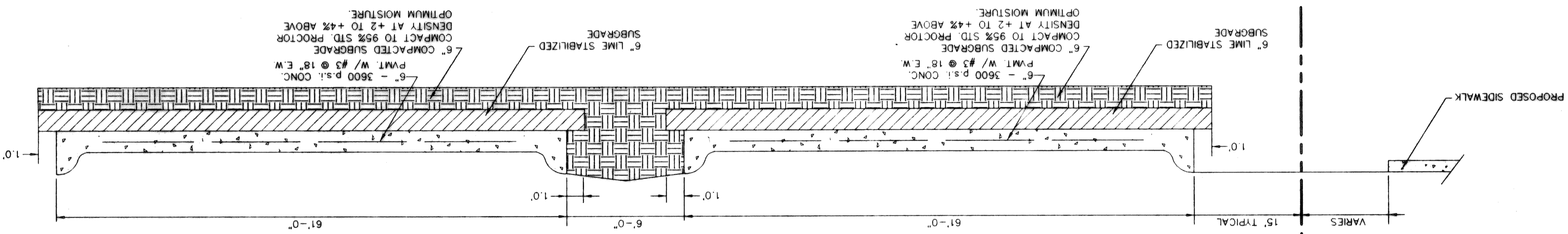


PAVING DETAILS

SET NUMBER	OF
2.10	3
SHEET NUMBER	
C	



SECTION "A-A" TYPICAL PAVING SECTION



1. ALL CONCRETE PAVEMENT SHALL HAVE A MINIMUM COMPRESSIVE STRENGTH OF 3600 PSI AT 28 DAYS WITH NO. 3 REINFORCING BARS SPACED AT 18-INCH O.C.E.W. MINIMUM.
2. PAVEMENT WITHIN THE FIRE LANE AND SERVICE AREA SHALL BE 6-INCHES THICK REINFORCED CONCRETE. ALL PARKING STALLS AND DRIVERS AREAS SHALL BE 5-INCHES THICK REINFORCED CONCRETE. ALL SIDEWALKS SHALL BE 4-INCHES THICK REINFORCED CONCRETE. REFERENCE SHEETS 2.5 ADDITIONAL INFORMATION AND DETAILS, TYP.
3. ALL CURBS SHALL BE INTEGRAL 6-INCH REINFORCED CONCRETE CURBS AS PER CITY OF ROCKWALL STANDARDS. ALL BAR LAPS SHALL BE THIRTY DIAMETERS MINIMUM.
4. ALL SUBGRADE UNDER PAVEMENT SHALL BE 6-INCH THICK STABILIZED WITH 7% HYDRATED LIME AND COMPACTED TO A DENSITY NOT LESS THAN 95 PERCENT OF STANDARD PROCTOR (ASTM D-698) AT A MOISTURE CONTENT NOT ABOVE OPTIMUM, NOR LESS THAN THREE PERCENT BELOW OPTIMUM. THE COMPACTED MATERIAL SHOULD THEN BE COVERED IMMEDIATELY WITH PAVING OR KEPT MOIST UNTIL THE PAVING IS PLACED. ALL STABILIZED SUBGRADE SHALL EXTEND TO THE BACK OF CURB, TYP.
5. THE CONTRACTOR SHALL SUBMIT A JOINT DIAGRAM FOR REVIEW PRIOR TO CONSTRUCTION. ALL JOINTS SHALL ADHERE TO THE CITY OF ROCKWALL STANDARDS. BAR CHAIRS OR AN APPROVED DEVICE SHALL BE FURNISHED. PROVIDE SAMCUT JOINTS IN ALL CONCRETE PAVING DRIVES, PARKING AREAS, FIRE LANE AND SERVICE AREAS AT 15-FOOT 0-INCHES O.C. DEPTH AND AT WALLS AT 5-FOOT 0-INCHES O.C.E.W. U.O.M. TYP. ALL JOINTS OF SAMCUT TO BE 1/4 THE THICKNESS OF THE PAVEMENT. SEALANT MUST BE SAMCUT WITHIN 12 HOURS AFTER CONCRETE IS PLACED. SEALANT MUST BE INSTALLED WITHIN 24 HOURS AFTER SAMCUTTING. REFER TO DETAILS 5-11 SHEET 2.5 FOR TYPICAL JOINTS.
6. ALL CONSTRUCTION SHALL BE PERFORMED IN ACCORDANCE WITH THE CITY OF ROCKWALL STANDARD DETAILS AND SPECIFICATIONS.
7. SEE SHEET 2.2 FOR DETAILED DIMENSIONS OF PROPOSED REINFORCED CONCRETE PAVEMENT, SHEET 2.2 FOR FIRE LANES, PARKING SPACES, AND SIDEWALKS. SEE SHEET 2.3 FOR SITE PAVING PLAN.
8. CONTRACTOR TO VERIFY EXISTING PAVEMENT ELEVATIONS PRIOR TO CONSTRUCTION.
9. TYPICAL SIDEWALK GROSS SLOPE SHALL BE 1/4-INCH PER FOOT AWAY FROM BUILDING AND/OR CURB.
10. NEW PAVING INSTALLED SHALL "FLUSH-OUT" AT ANY JUNCTURE WITH EXISTING PAVING.

GENERAL PAVING NOTES

SOILS REPORT NOTE

THE INITIAL SOIL TEST AND REPORT PREPARED BY FUERO - McCELLAND AND ANY AND ALL SUBSEQUENT REPORTS PREPARED FOR THIS PROJECT BY FUERO - McCELLAND OR BY OTHER FIRM, AGENCY OR ENTITY, EVEN THOUGH NO SPECIFIC SPECIFICATIONS FOR THIS PROJECT, CONTAINED IN THE PLANS AND/OR SPECIFICATIONS FOR THIS PROJECT, ARE MADE A PART OF THIS SITE PLAN. A COPY CAN BE OBTAINED THROUGH THE ARCHITECT OR ENGINEER.

ROCKWALL I.S.D. 1998 PAVING IMPROVEMENTS
 ROCKWALL HIGH SCHOOL PAVING IMPROVEMENTS
 ROCKWALL, TEXAS

DATE	JULY 7, 1998
DRAWN BY	R. HORNMAN
CHECKED	R.A.H.
CONV. NO.	0494453
REVISION	SEPT. 30, 1998