

1999 SOCCER FIELD AND TRACK ADDITIONS TO  
**ROCKWALL HIGH SCHOOL**  
 ROCKWALL INDEPENDENT SCHOOL DISTRICT  
 ROCKWALL, TEXAS

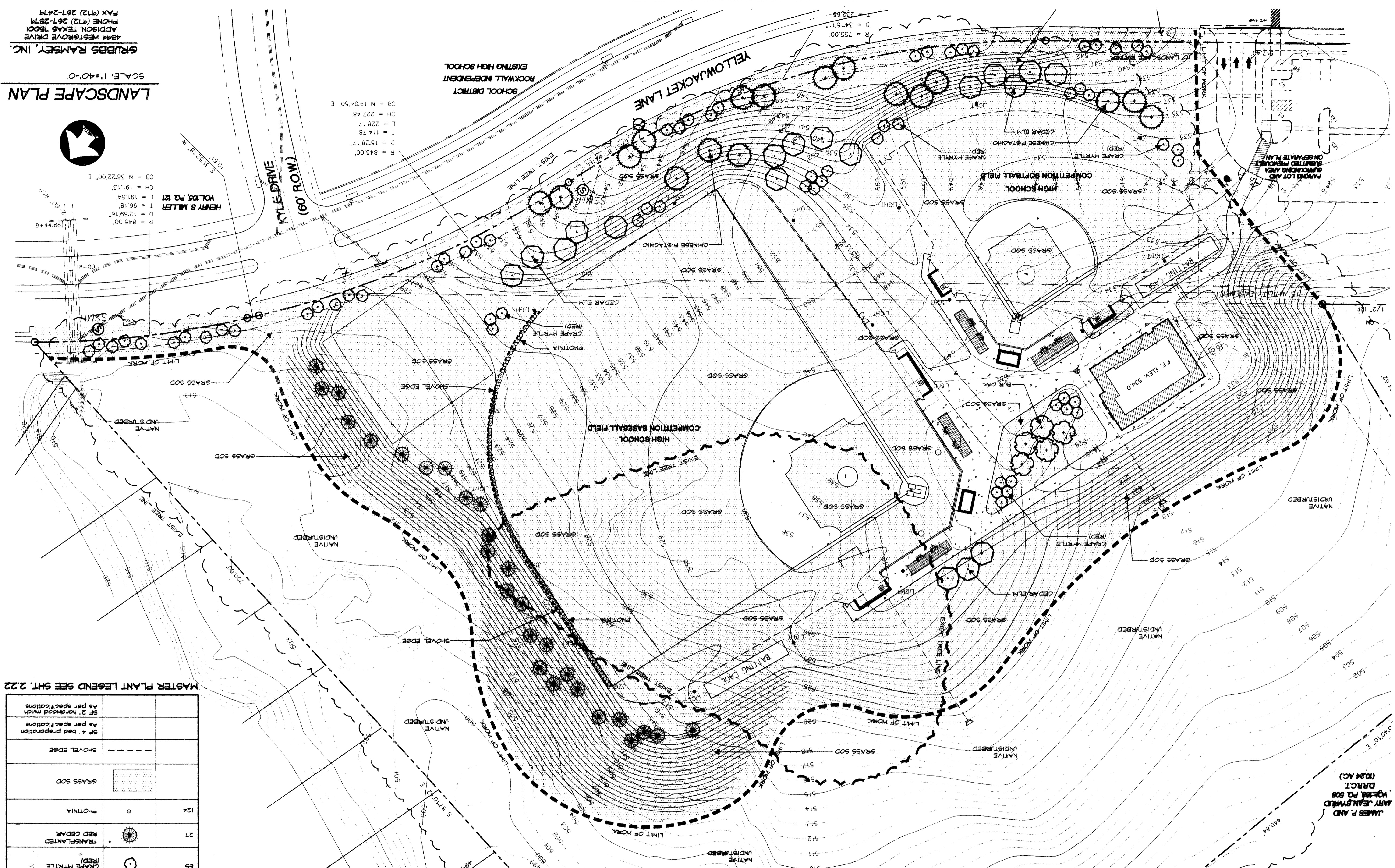
DATE: 31 AUGUST 1999  
 DRAWN BY: GRI  
 CHECKED: GRI  
 GRI NO. 1449/271  
 REVISED:

SET NUMBER: 2.20  
 SHEET NUMBER: 1

GRUBBS RAMSEY, INC.  
 4394 WESTROVE DRIVE  
 ADDISON, TEXAS 75001  
 PHONE (972) 267-2574  
 FAX (972) 267-2474

SCALE: 1" = 40'-0"

LANDSCAPE PLAN



PLANT LEGEND-SHT. 2.20

| QUANTITY | SYMBOL | CALLOUT  |
|----------|--------|--|
| 17       |        | CHINESE PISTACHIO                              |
| 18       |        | CEDAR ELM                                      |
| 5        |        | BUR OAK  |
| 65       |        | GRAPE HYDRATE (RED)                            |
| 27       |        | RED CEDAR                                      |
| 124      |        | PHOTINIA                                       |
|          |        | GRASS SOD                                      |
|          |        | SHOVEL EDGE                                    |
|          |        | SF 4' bed preparation<br>As per specifications |
|          |        | SF 2' hardwood mulch<br>As per specifications  |

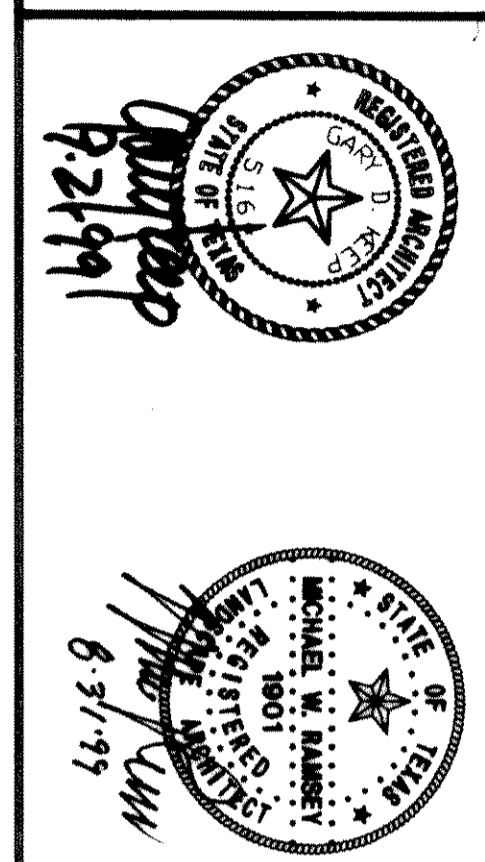
MASTER PLANT LEGEND SEE SHT. 2.22

LANDSCAPE TABULATIONS

|  |                                 |
|--|---------------------------------|
| LENGTH OF FRONTAGE   | 1,077 L.F.                      |
| BUFFER TREES PROVIDED  | 215 TREES                       |
| BUFFER TREES REQUIRED (1077 L.F. / 50' = 8 L.F. TREES + 95541 TREES) | 95,618 TREES                    |
| SITE AREA  | 64,970 S.F.                     |
| TOTAL SITE LANDSCAPE AREA  | 640,220 S.F. (93%)              |
| PARKING TREES  | 925 CAL. INCHES                 |
| TOTAL PARKING TREES (4" OR LARGER) TO BE REMOVED                     | 105 X 3" CAL. = 315 CAL. INCHES |
| PARKING TREES PREVIOUSLY UNDER SEPARATE PLAN                         | 0 SPACES                        |
| PARKING TREES REQUIRED (0 SPACES / 20' = 0 TREES)                    | 0 TREES                         |
| TOTAL CAL. REPLACEMENT TREES   | 925 CAL. INCHES                 |
| TOTAL CAL. REPLACEMENT TREES   | 925 CAL. INCHES                 |
| PARKING TREES PREVIOUSLY UNDER SEPARATE PLAN                         | 0 SPACES                        |
| PARKING TREES REQUIRED (0 SPACES / 20' = 0 TREES)                    | 0 TREES                         |
| TOTAL CAL. REPLACEMENT TREES   | 925 CAL. INCHES                 |

ALL DISTURBED/GRADED LANDSCAPE AREAS WILL HAVE AUTOMATIC UNDERGROUND IRRIGATION

SET NUMBER: 2.20  
 SHEET NUMBER: 1



1999 SOCCER FIELD AND TRACK ADDITIONS TO  
**ROCKWALL HIGH SCHOOL**  
 ROCKWALL INDEPENDENT SCHOOL DISTRICT  
 ROCKWALL, TEXAS