

IRRIGATION SPECIALIST  
JOHN WINGFIELD - (972) 601-3819

SCALE: 1"=40'-0"

IRRIGATION PLAN

HENRY & MILLER  
VOLVO, PG 21  
R = 845.00'  
D = 12.5916'  
T = 96.18'  
L = 191.54'  
CH = 191.13'  
CB = N 38.22.00" E

ROCKWALL INDEPENDENT  
SCHOOL DISTRICT  
EXISTING HIGH SCHOOL  
YELLOWJACKET LANE  
R = 845.00'  
D = 15.2817'  
T = 114.78'  
L = 228.17'  
CH = 227.48'  
CB = N 19.04.50" E

RYLE DRIVE  
(60' ROW)

5710' E  
5710' E

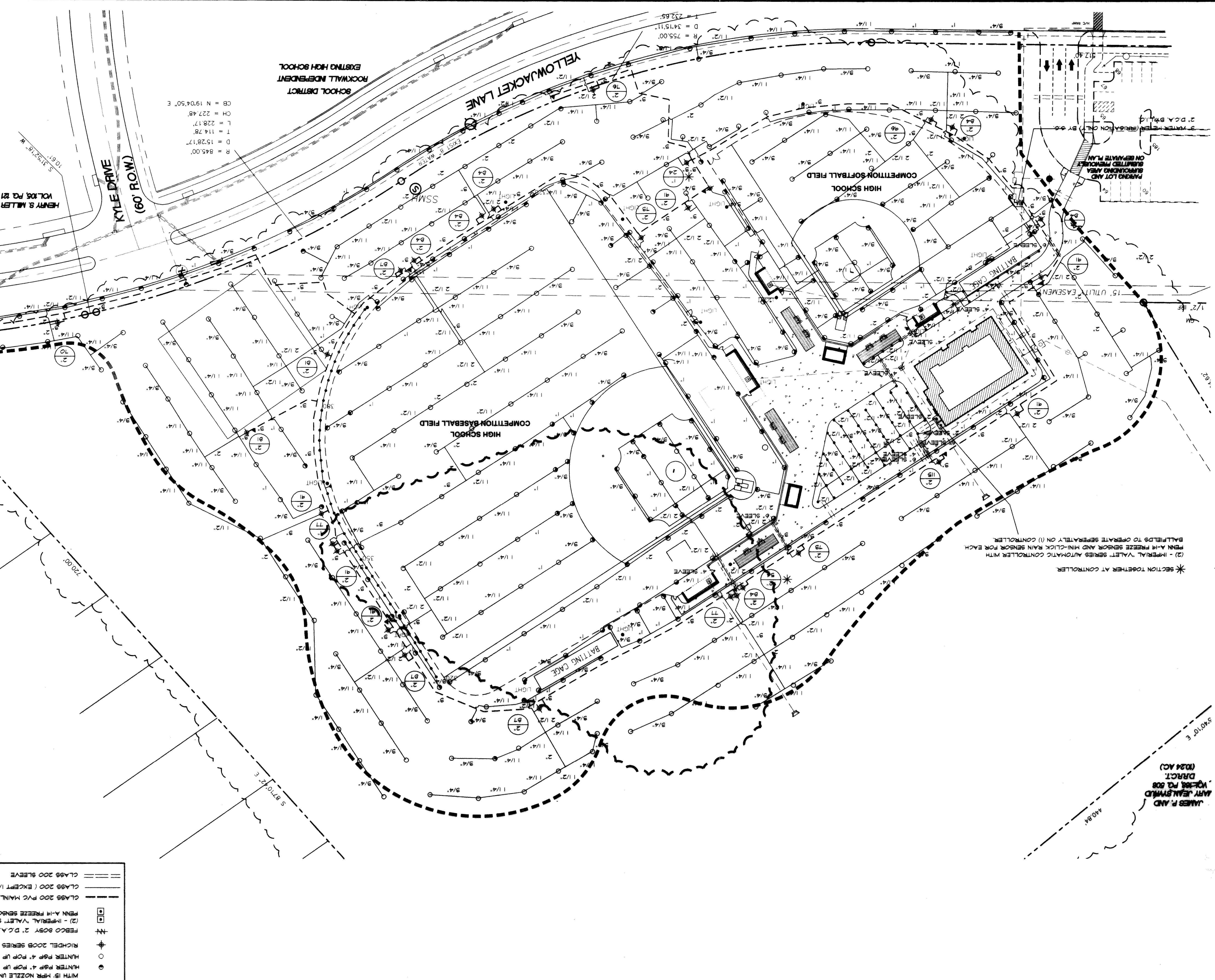
440.84'

5407.0' E

JAMES R. AND  
MARY JEAN WINGFIELD  
1499 PG. 008  
DISTRICT  
(024 AC)

PARADE LOT AND  
EXISTING HIGH SCHOOL  
ON SEPARATE PLAN

3 WATER METER PERMITS REQUIRED  
ON SEPARATE PLAN

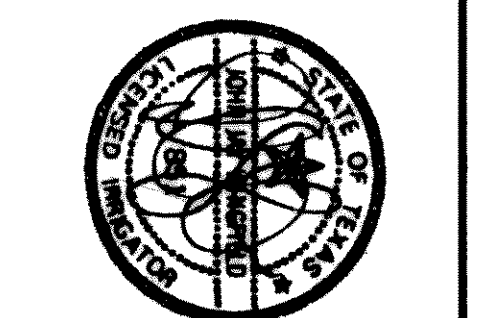
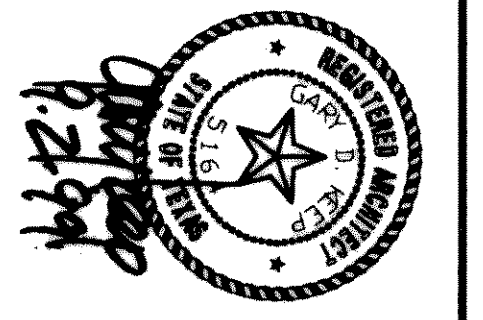
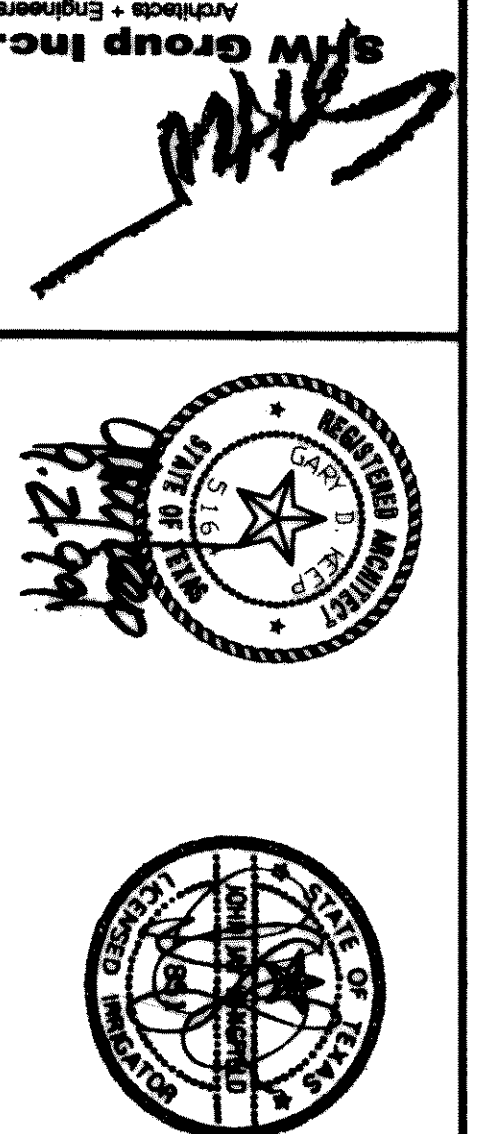


**LEGEND**

●	TORO 510 Z 4" POP UP SPRAY HEAD
○	HUNTER POP 4" POP UP ROTARY HEAD, FULL CIRCLE, #10 NOZZLE
○	HUNTER POP 4" POP UP ROTARY HEAD, PART CIRCLE, #6 NOZZLE
○	WITH 1/2" NOZZLE UNLESS NOTED OTHERWISE
⊕	RICHDEL 200B SERIES ELECTRIC REMOTE CONTROL VALVE
⊕	FEBCO 80BY 2" D.C.A. INSTALLED PER CITY CODE
⊕	(2) - IMPERIAL VALET SERIES AUTOMATIC CONTROLLER WITH PENN A-18 FREEZE SENSOR AND MINI-CLICK RAIN SENSOR FOR EACH
---	CLASS 200 PVC MAINLINE PIPE, 2 1/2" UNLESS NOTED OTHERWISE
---	CLASS 200 (EXCEPT 1/2 INCH #15) PVC LATERAL PIPE
---	CLASS 200 SLEEVE

\* SECTION TOGETHER AT CONTROLLER  
(2) - IMPERIAL VALET SERIES AUTOMATIC CONTROLLER WITH PENN A-18 FREEZE SENSOR AND MINI-CLICK RAIN SENSOR FOR EACH BALLFIELDS TO OPERATE SEPARATELY ON (1) CONTROLLER.

**1999 SOCCER FIELD AND TRACK ADDITIONS TO  
ROCKWALL HIGH SCHOOL  
ROCKWALL INDEPENDENT SCHOOL DISTRICT  
ROCKWALL,  
TEXAS**



DATE  
**31 AUGUST 1999**

COM. NO.  
**1499/2**