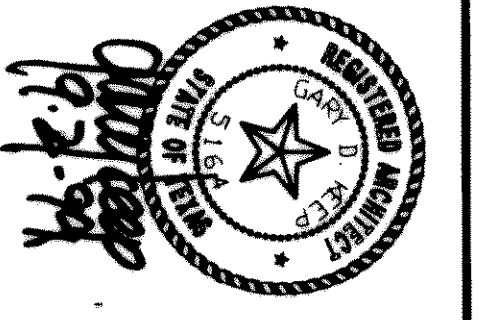
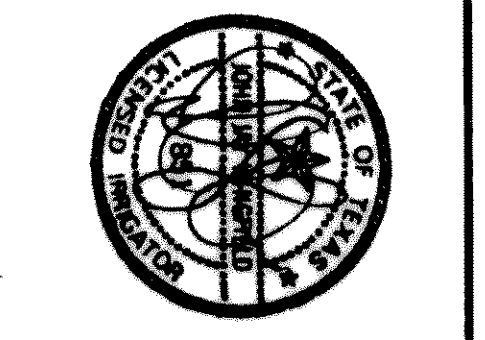


DATE 31 AUGUST 1999
 DRAWN BY JMW
 CHECKED JMW
 CIVIL ENGINEER NO. 1499471
 REGISTERED PROFESSIONAL ENGINEER

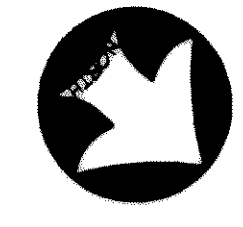
**1999 SOCCER FIELD AND TRACK ADDITIONS TO
 ROCKWALL HIGH SCHOOL
 ROCKWALL INDEPENDENT SCHOOL DISTRICT
 ROCKWALL,
 TEXAS**



SHW Group Inc.
 Architects + Engineers

SHEET NUMBER 1
 SET NUMBER 2.24
 DF 20

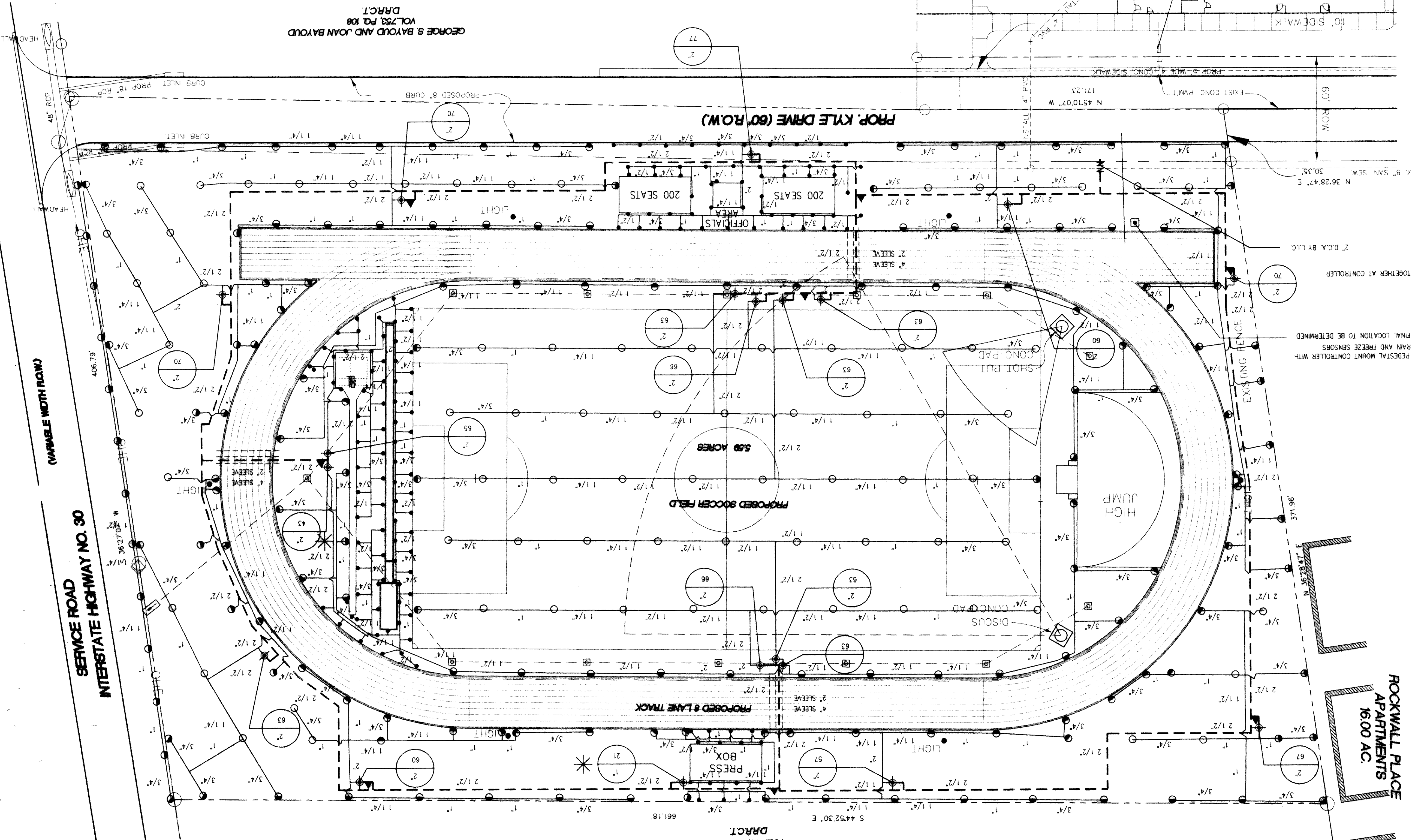
IRRIATION SPECIALIST
 JOHN WINGFIELD - (972) 601-3819



IRRIGATION PLAN
 SCALE: 1"=30'-0"

LEGEND

- TORO 570 Z 4" POP UP SPRAY HEAD
- HUNTER P&P 4" POP UP ROTARY HEAD, FULL CIRCLE #10 NOZZLE
- HUNTER P&P 4" POP UP ROTARY HEAD, PART CIRCLE #8 NOZZLE
- WITH 1/2" MFR NOZZLE UNLESS NOTED OTHERWISE
- ⊕ RICHDEL 200B SERIES ELECTRIC REMOTE CONTROL VALVE
- ⊖ FEBCO BOBY 2" D.C.A. INSTALLED PER CITY CODE
- IMPERIAL "VALET" SERIES AUTOMATIC CONTROLLER WITH PENN A-19 FREEZE SENSOR AND MINI-CLICK RAIN SENSOR FOR EACH
- CLASS 200 PVC MAINLINE PIPE, 2 1/2" UNLESS NOTED OTHERWISE
- CLASS 200 (EXCEPT #15) PVC LATERAL PIPE
- CLASS 200 SLEEVE



1290 AC
 VOL. 105, PG. 121
 DRAFT

GEORGE S. BAYD AND JOAN BAYD
 VOL. 753, PG. 108
 DRAFT

2" WATER METER (IRRIGATION ONLY) BY G.C.
 2 1/2" WATER SUPPLY UNDER PAYMENT TO BACKFLOW PREVENTER BY G.C.
 BORE REQUIRED. NO PAVING CUTS ALLOWED.

SECTION TOGETHER AT CONTROLLER
 FINAL LOCATION TO BE DETERMINED
 RAIN AND FREEZE SENSORS
 PEDestal MOUNT CONTROLLER WITH