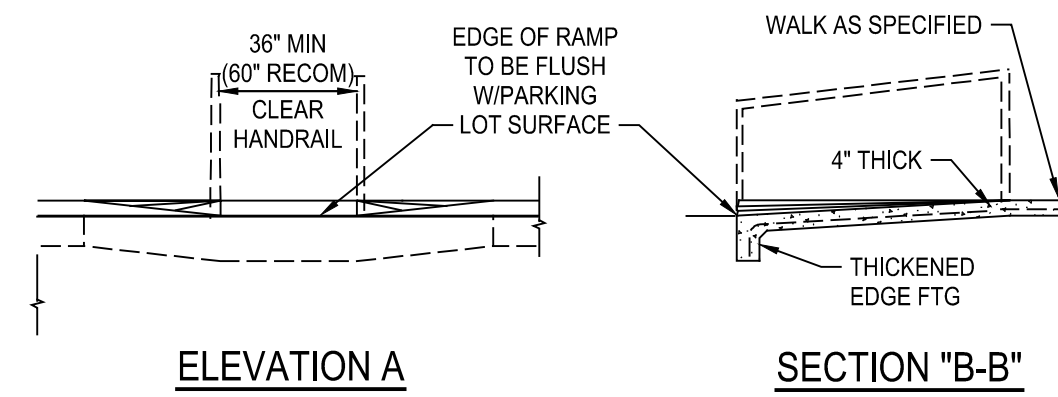


SIDEWALK PLAN

NTS

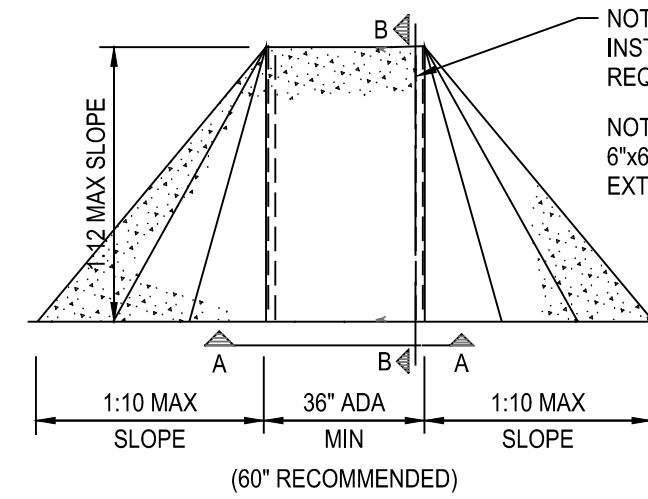
NOTES:

1. AT MARKINGS THE CONCRETE SHALL BE A TOOLED JOINT 3/4" DEEP, FOLLOWED BY GROOVING TOOL. STRENGTH SHALL BE 3000 p.s.i. WITH #3 BARS @ 24" O.C.
2. SIDEWALKS ADJACENT TO BUILDING TO BE PLACED ON LIME TREATED SUBGRADE THE SAME AS PAVING ALL OTHER SIDEWALKS TO BE PLACED OVER 2" COMPACTED SAND. (PI < 15)



ELEVATION A

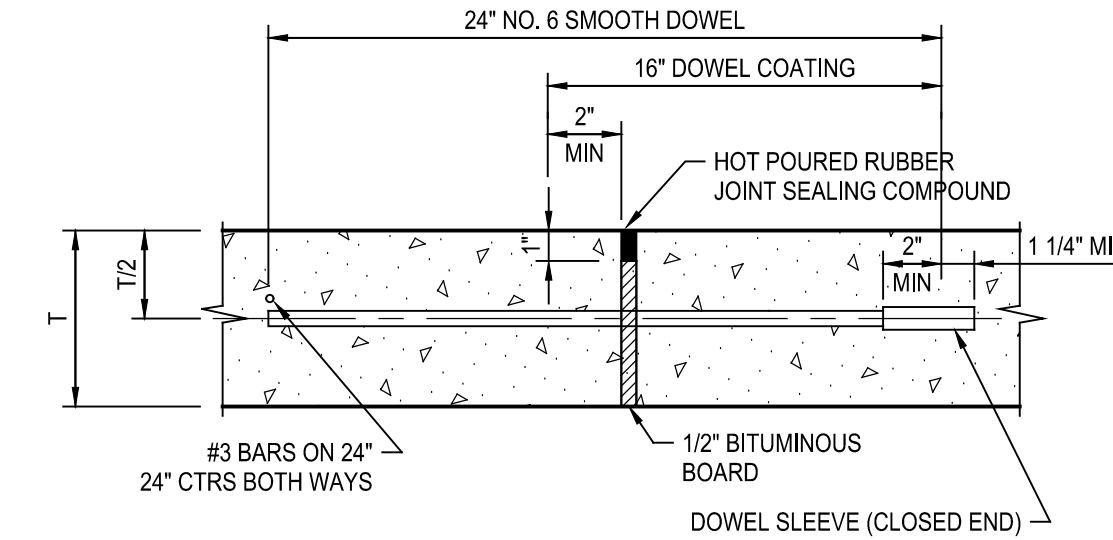
SECTION "B-B"



CONCRETE RAMP-INTERNAL

SCALE: 1/4"=1'-0"

NOTE: HANDRAIL TO BE INSTALLED ONLY IF REQUIRED BY LOCAL CODE
NOTE: RAMP TO CONTAIN 6"x6" W1.4xW1.4 W.W.F. EXTENDING INTO FOOTING.
RAMP TO HAVE PAVR PER SPECIFICATIONS
NOTE: HANDICAP RAMPS MUST BE COLOR-CONDITIONED CONCRETE. USE QUARRY RED, MANUFACTURED BY L.M. SCOFIELD COMPANY (800) 800-9900. A SPEC SHEET WILL BE PROVIDED WITH YOUR PERMIT.

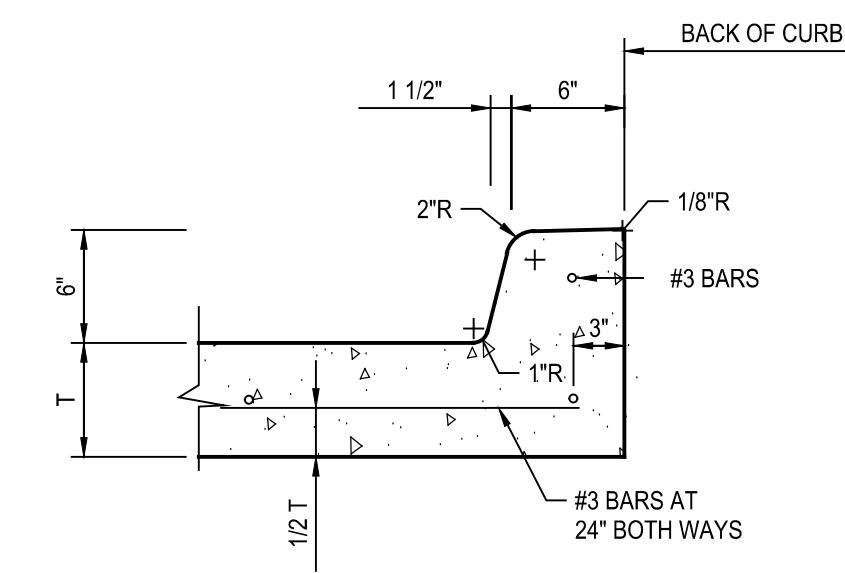


EXPANSION JOINT DETAIL

NTS MAXIMUM SPACING = 150 FEET

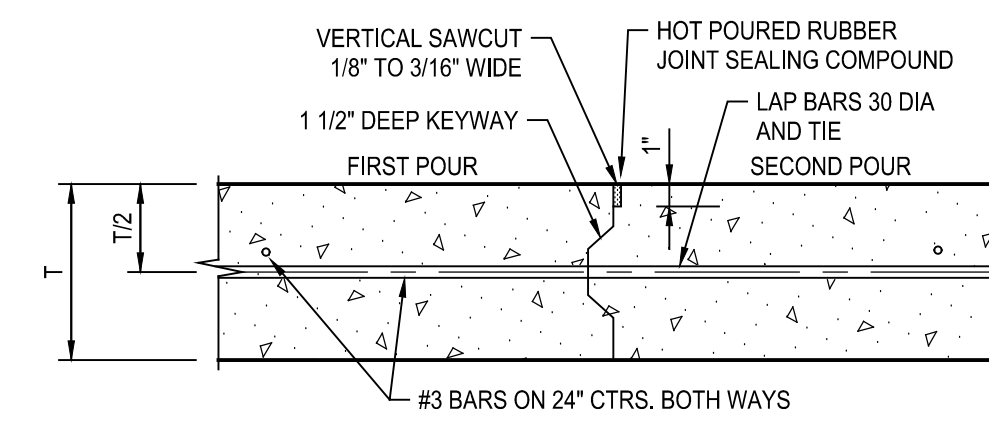
NOTE: DOWELS AND REINFORCING BARS SHALL BE SUPPORTED BY AN APPROVED DEVICE

DOWEL SLEEVE (CLOSED END) TO FIT DOWEL AND BE SECURED TO BE INSTALLED 2' C.C.



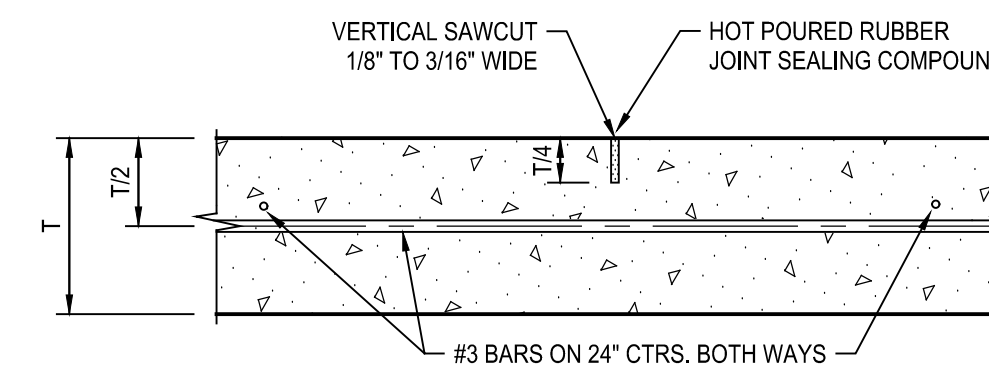
INTEGRAL CURB & GUTTER

NTS



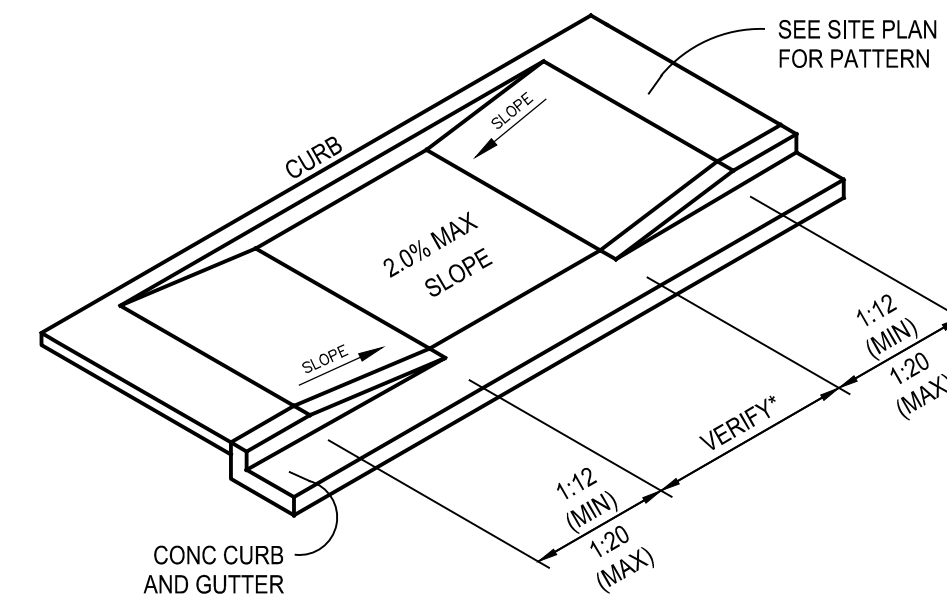
CONSTRUCTION JOINT DETAIL (L)

NTS



SAWED DUMMY JOINT DETAIL (T)

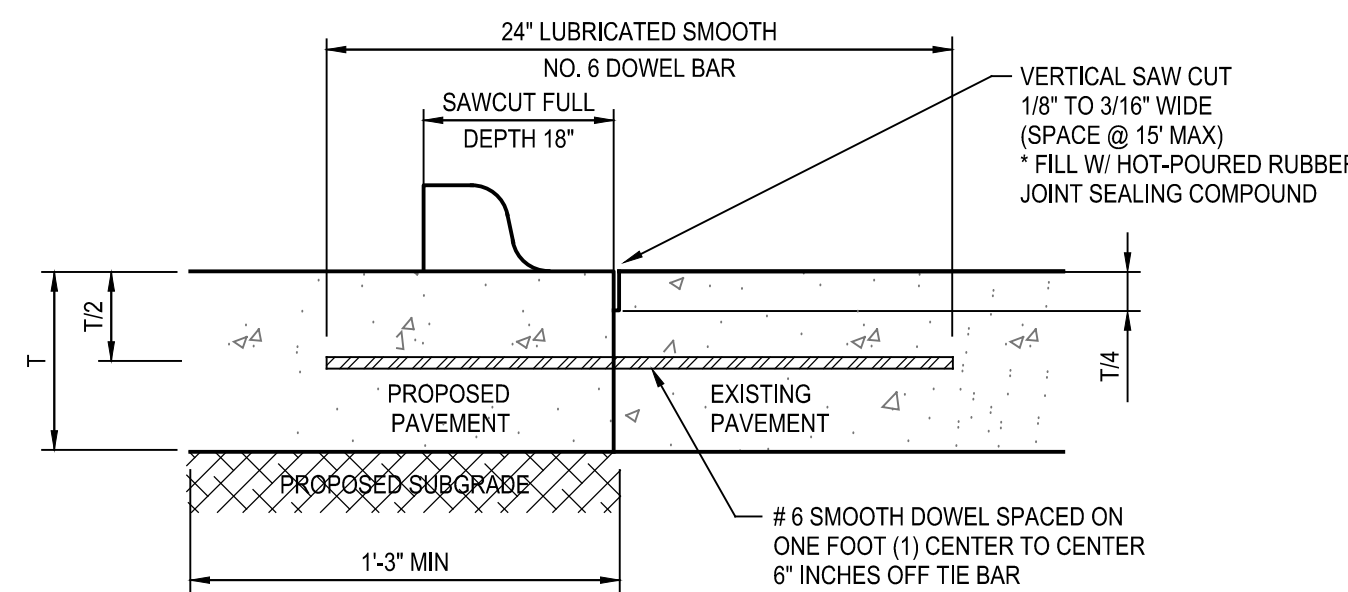
NTS MAXIMUM SPACING = 15 FEET



HANDICAP RAMP DETAIL

NTS

NOTE: NO SAND WILL BE PERMITTED UNDER PAVEMENT.



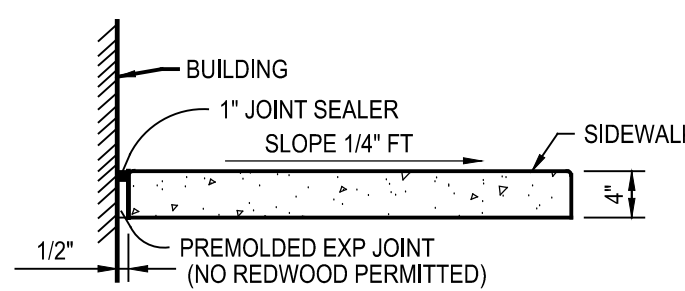
TO BE USED WHERE PROPOSED CONCRETE PAVEMENT MEETS EXISTING CONCRETE PAVEMENT

NOTES:

1. NO. 5 SMOOTH DOWEL BAR MAY BE USED IN 5', 6" AND 7" PAVEMENT THICKNESS.
2. LONGITUDINAL BUTT CONSTRUCTION MAY BE UTILIZED IN PLACE OF LONGITUDINAL HINGED (KEYWAY) JOINT AT CONTRACTOR'S OPTION.
3. DOWEL BARS SHALL BE DRILLED INTO PAVEMENT HORIZONTALLY BY USE OF A MECHANICAL RIG. DRILLING BY HAND IS NOT APPLICABLE. PUSHING DOWEL BARS INTO GREEN CONCRETE IS NOT ACCEPTABLE.

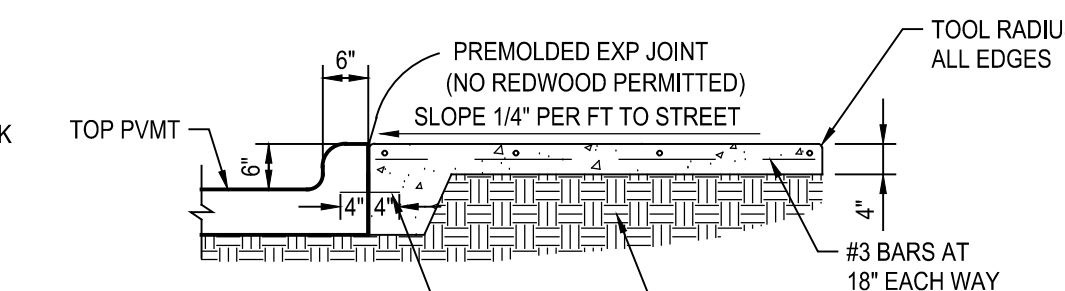
LONGITUDINAL BUTT DETAIL

NTS



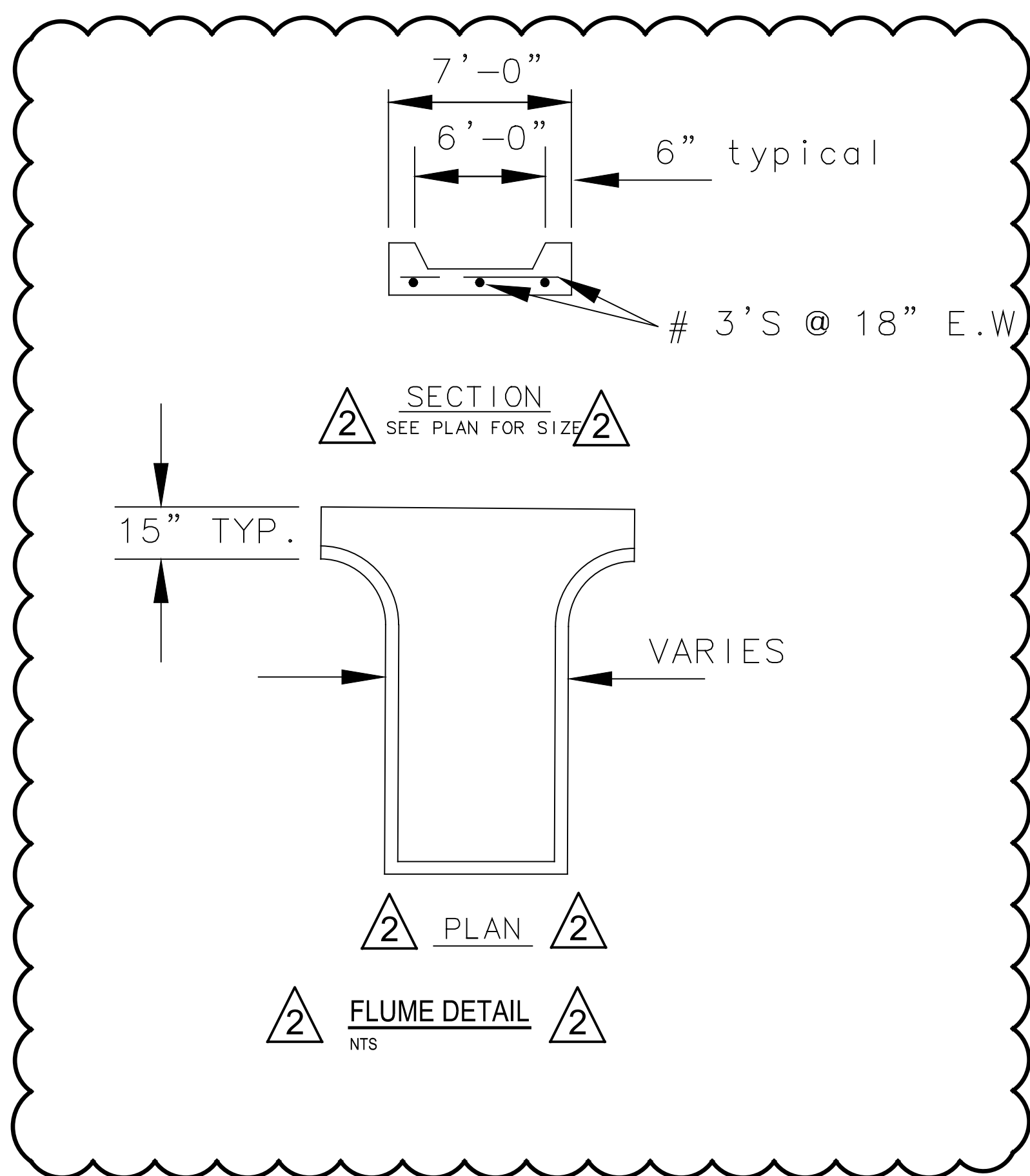
WALK/BUILDING/CURB INTERFACE

NTS



INTERIOR SIDEWALK TYPICAL SECTION

NTS



SECTION
SEE PLAN FOR SIZE

PLAN

FLUME DETAIL

NTS

ADDENDUM #1
PC - REMOVE STORM FLUME AND PARKING
PC - REMOVED STORM SEWER

Date	11/22/2016
Revision /	09/11/2017
1	12/04/2017
2	
3	

Project: **ROCKWALL HIGH SCHOOL RENOVATIONS**
FOR
ROCKWALL HIGH SCHOOL
ROCKWALL I.S.D.
901 YELLOW JACKET LN, ROCKWALL, TX 75087

Huckabee
ASTORIA - DALLAS - FORT WORTH - HOUSTON - WACO
www.huckabee-inc.com
800.687.1229

RECORD DRAWING
This is to certify that changes and corrections have been made to conform to the contractor's record of this project.
Signed: *Mike Glenn* Date: March 28, 2018
Glenn Engineering Corporation

GLENN ENGINEERING
TEXAS REGISTRATION NUMBER: F-303
PHONE 972-717-5151 FAX 972-717-2176
105 DECKER COURT, SUITE 910
IRVING, TEXAS 75062

100% CD	VOLUME
Job No. 1738-02-01	Sheet No. CP 1.1
Drawn By: RAH	Date: 12-03-2016