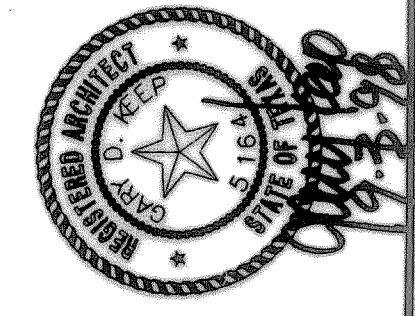
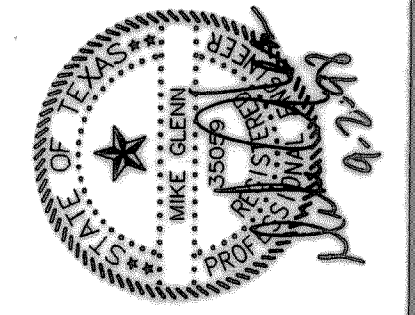
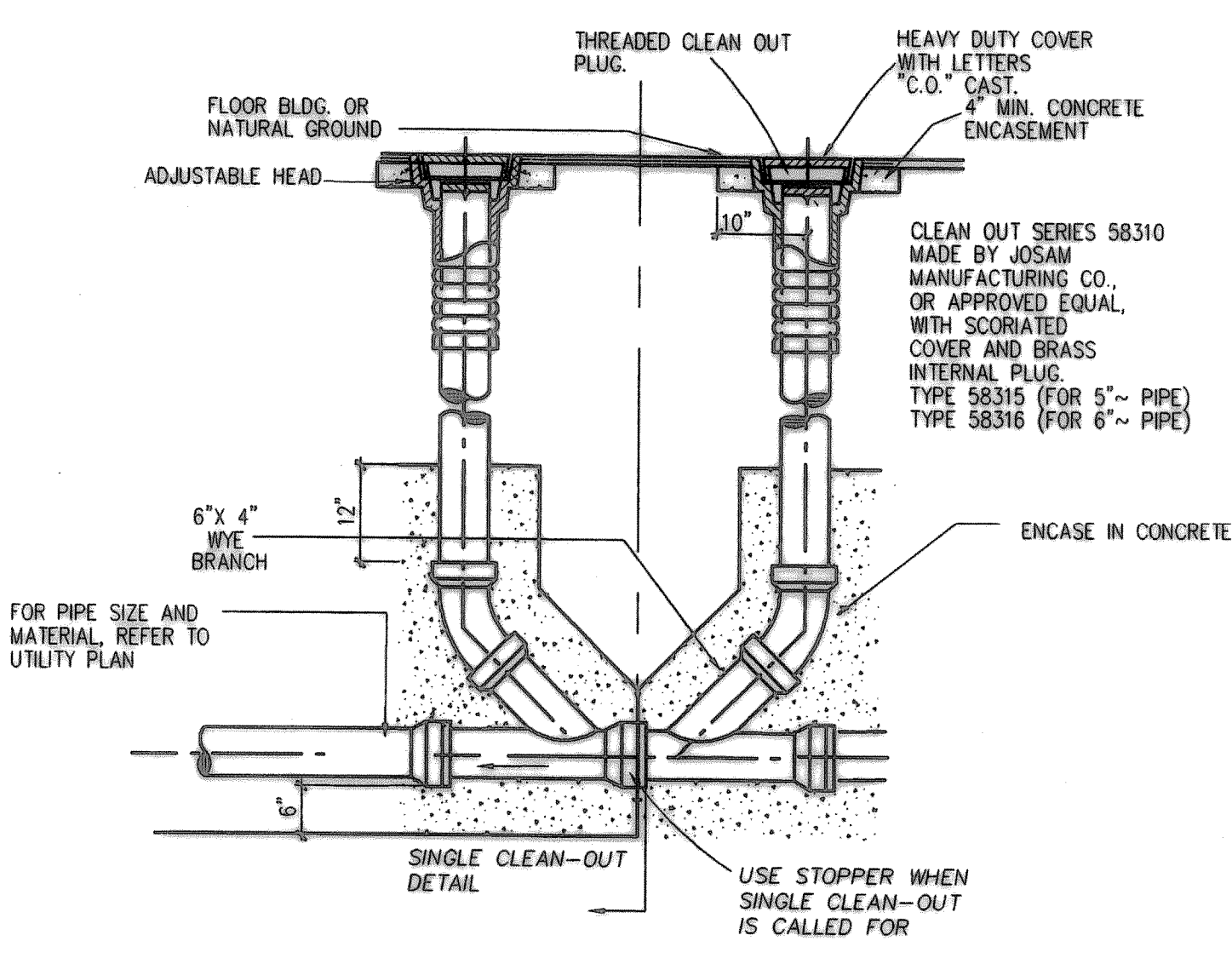


ROCKWALL HIGH SCHOOL ADDITIONS
ROCKWALL INDEPENDENT SCHOOL DISTRICT
ROCKWALL, TEXAS



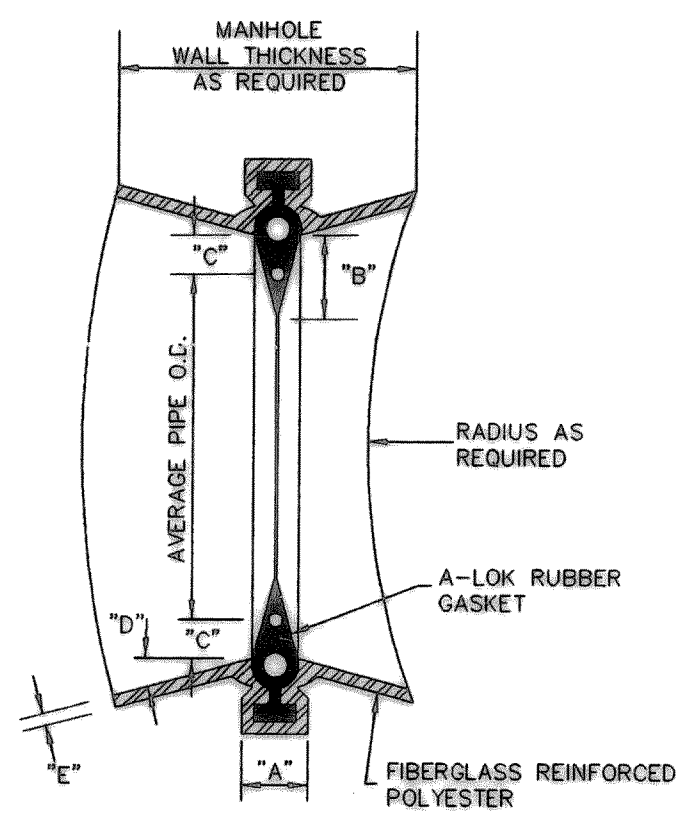
SHEET NUMBER	C
29	2.27
OF 48	
SET NUMBER	



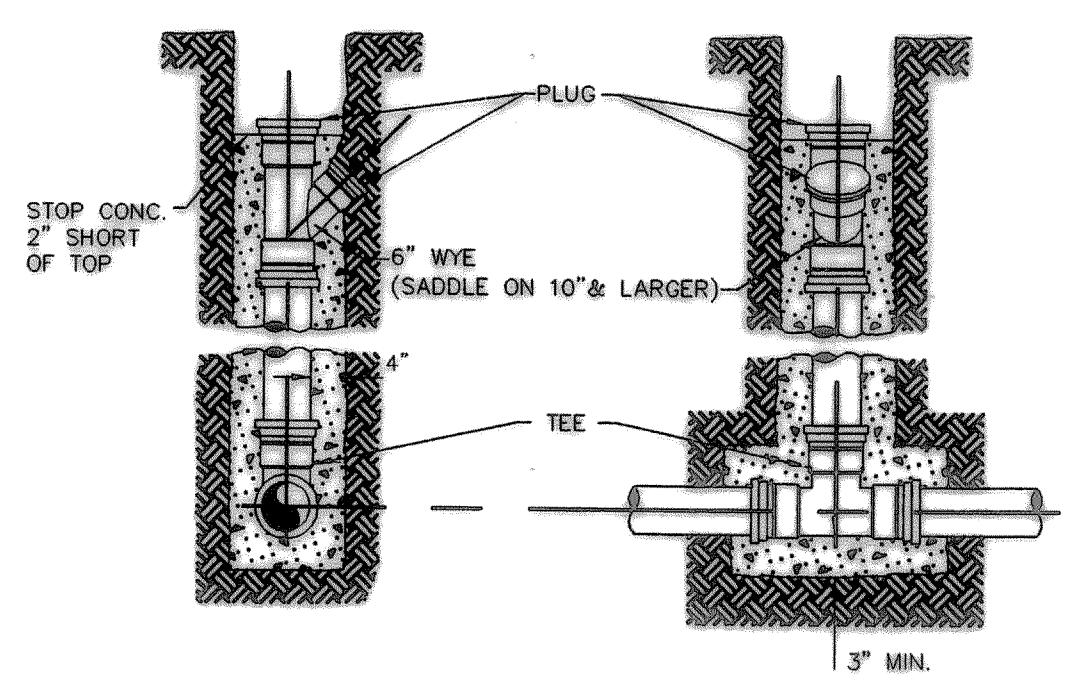
SANITARY SEWER DOUBLE CLEAN-OUT
 SINGLE / DOUBLE

DIMENSION FOR MANHOLE PIPE CONNECTOR A.S.T.M. D-682

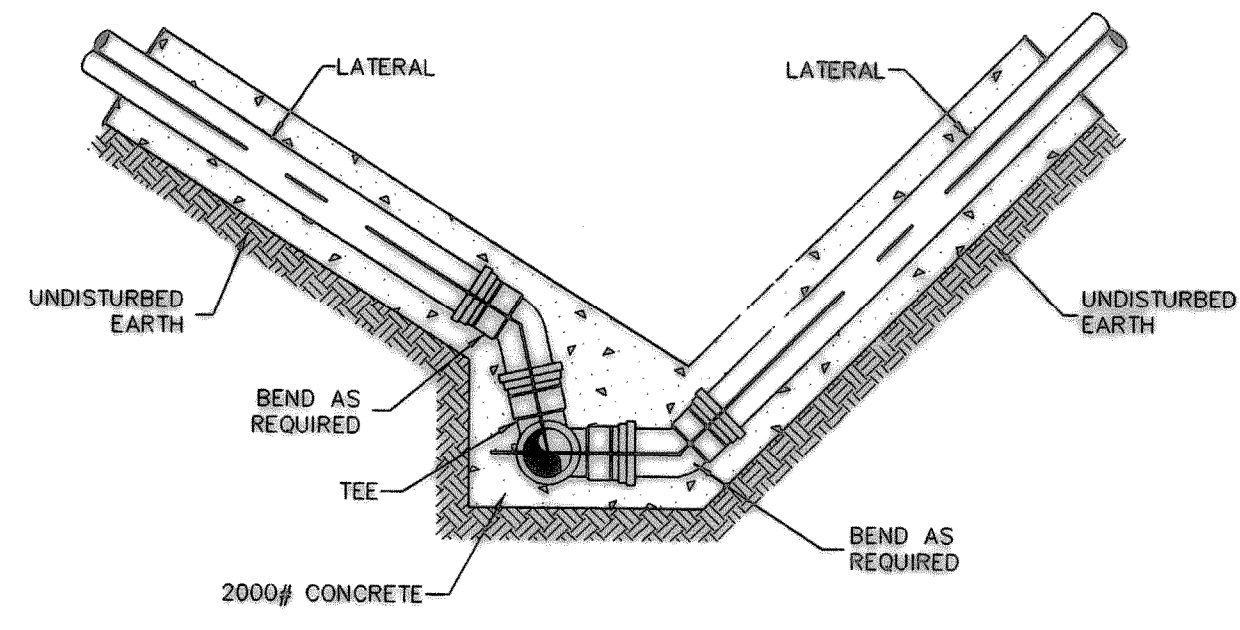
PIPE SIZE	A	B	C	D	E
4"-6"	1 1/2"	7/8"	3/8"	10"	0.10±
8"-24"	2 1/8"	1 3/8"	5/8"	10"	0.10±
24"-60"	2 3/8"	1 3/4"	3/4"	10"	0.25±



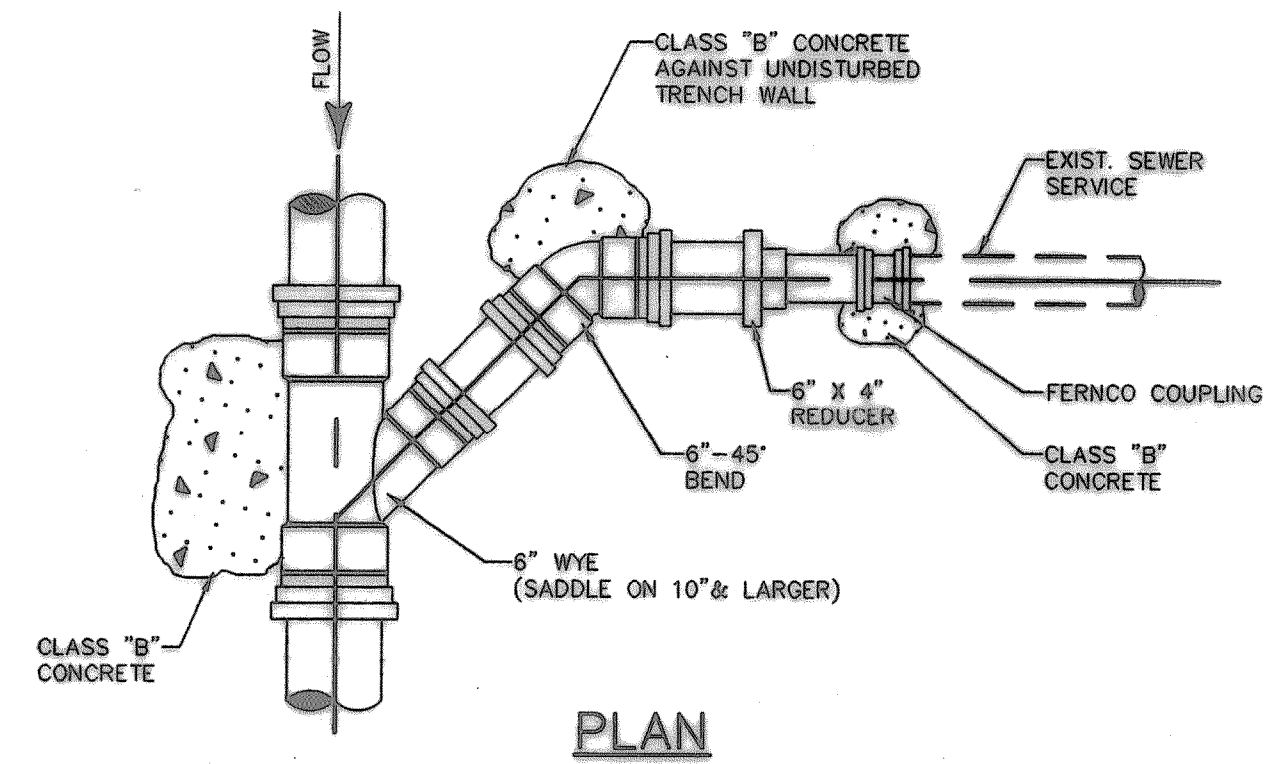
MANHOLE PIPE CONNECTOR
 (FOR ALL CAST-IN-PLACE MANHOLES)



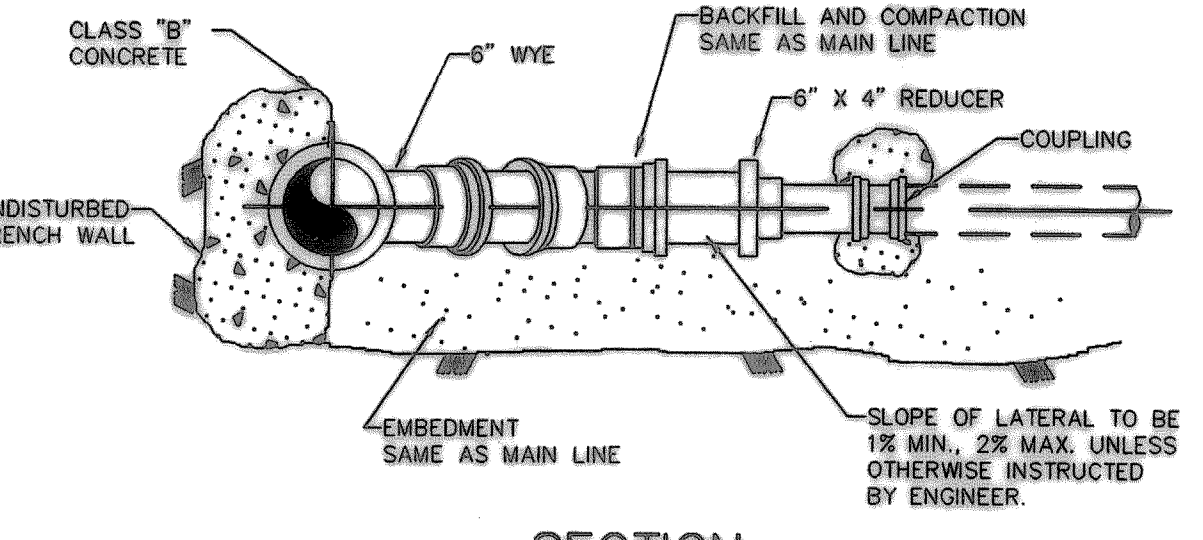
DEEP CUT CONNECTION
 USING P.V.C. PIPE



LATERAL CONNECTION FOR DITCHES
 WITH SLOPING SIDES USING PVC PIPE

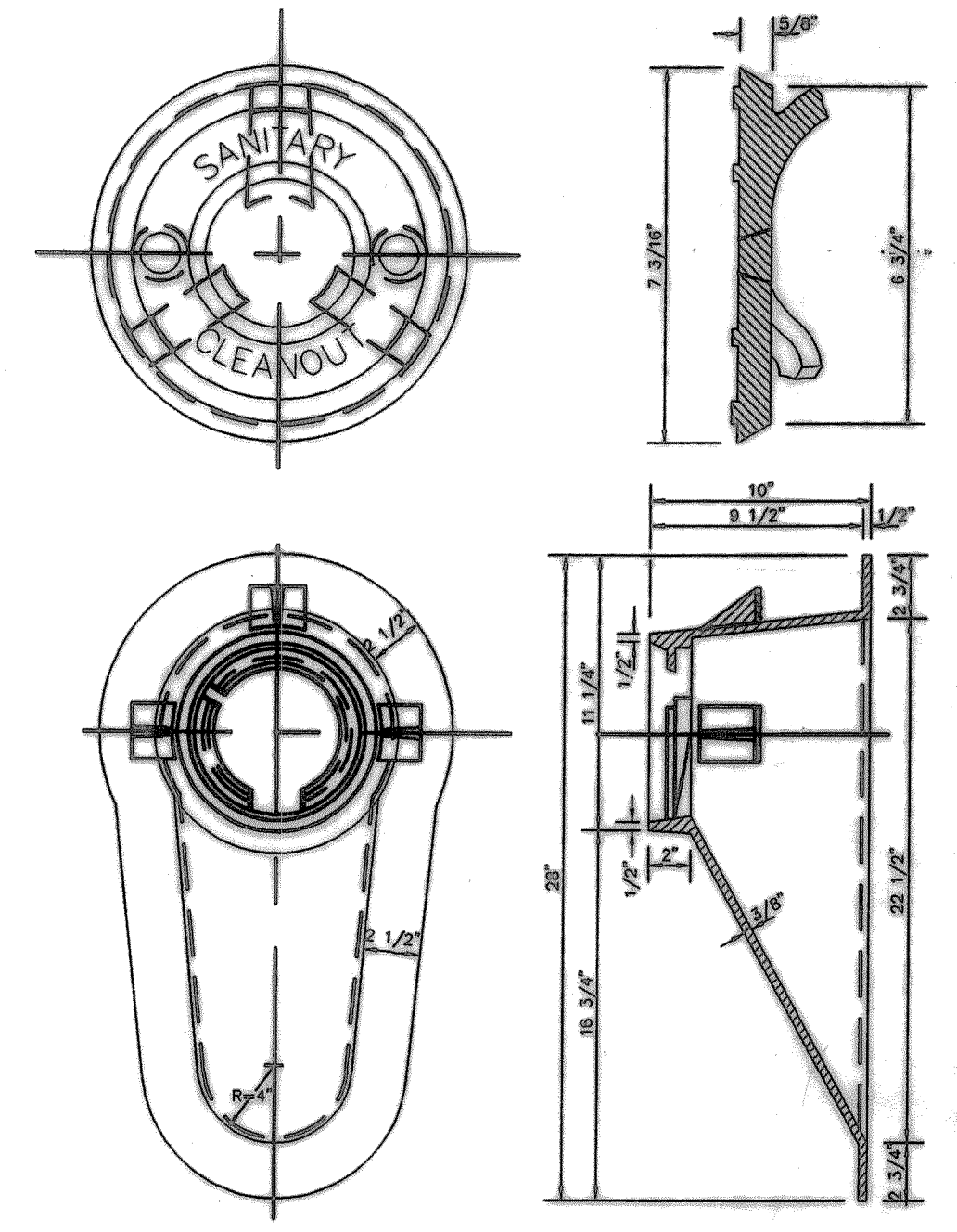


PLAN

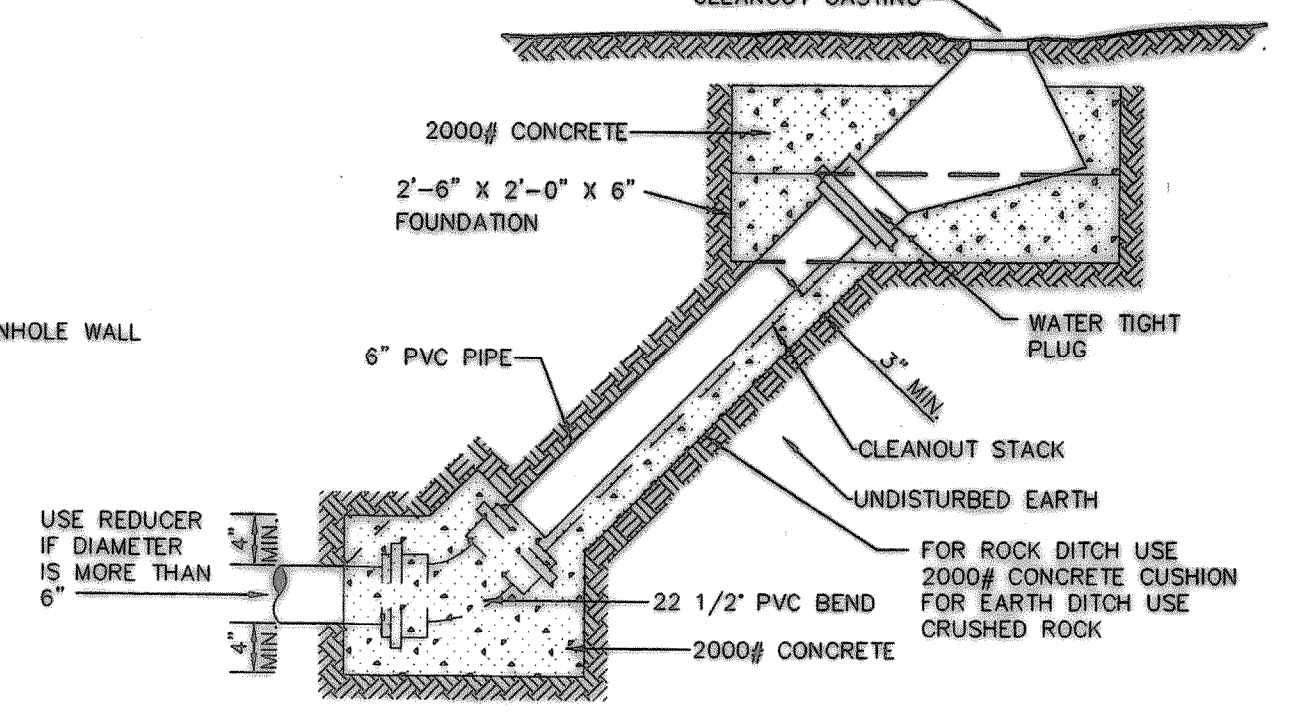


SECTION

DETAIL
SANITARY SEWER SERVICE
 3/4"-1'-0"

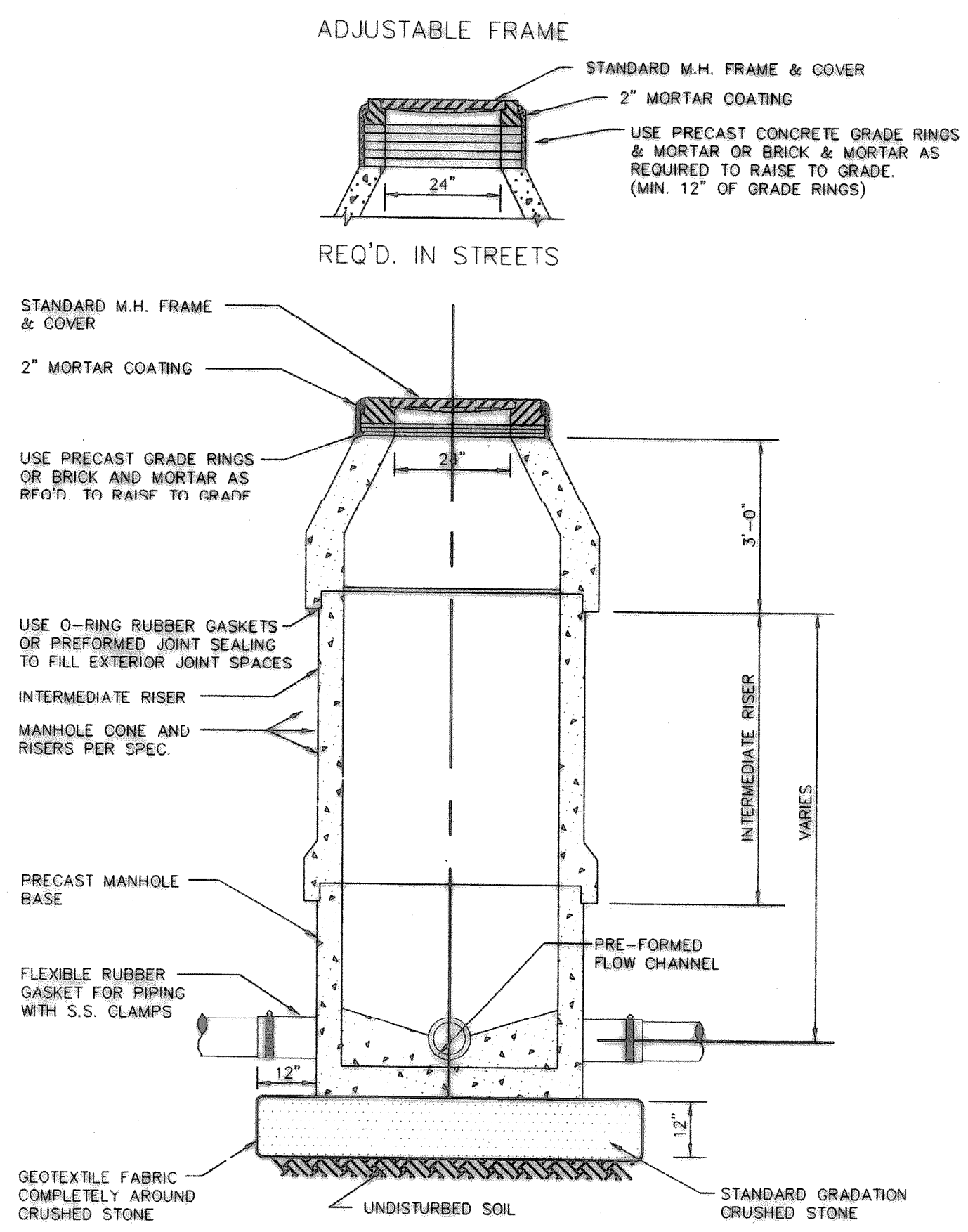


CLEANOUT FRAME AND COVER DETAIL



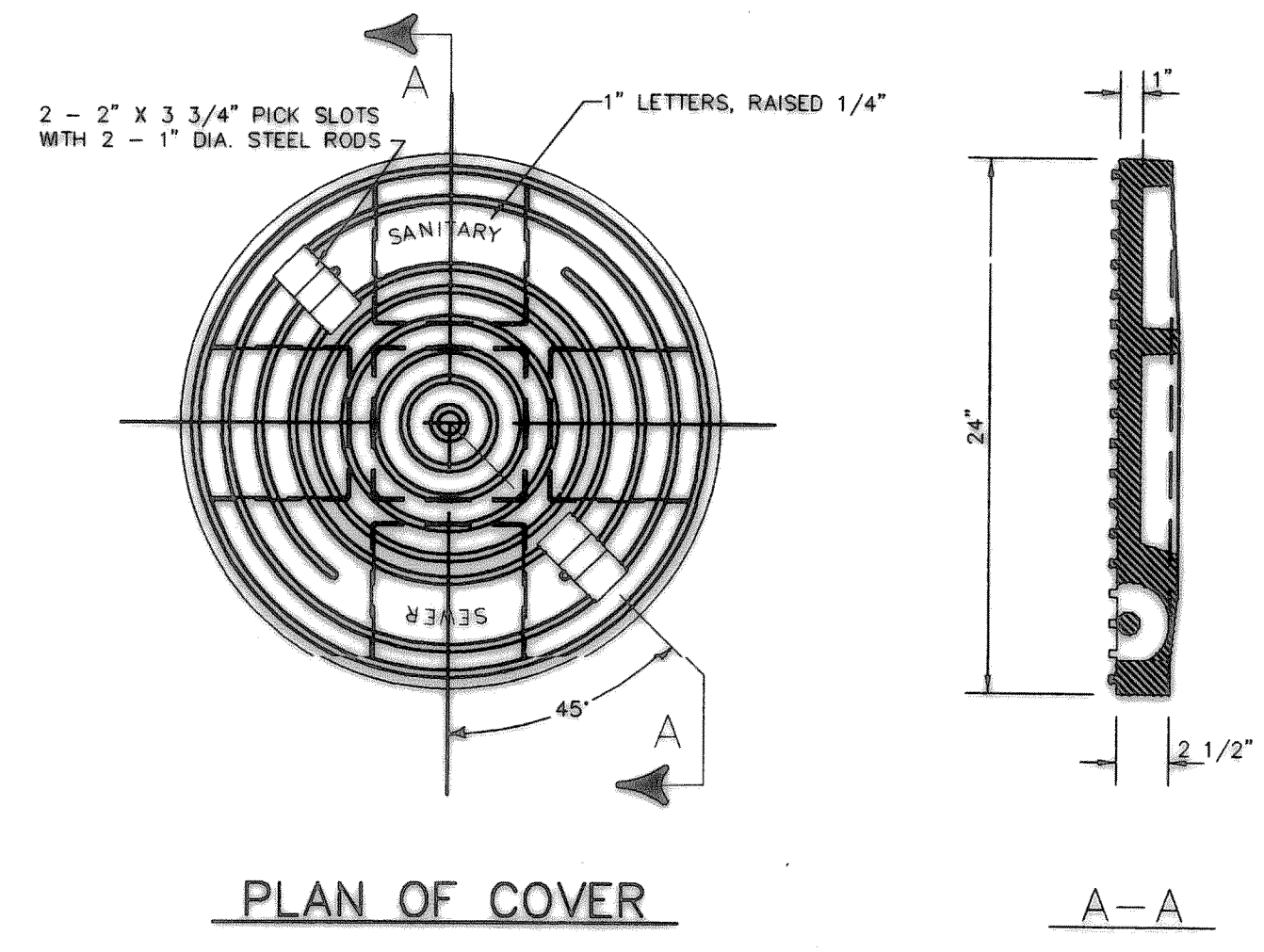
DETAIL
SANITARY SEWER CLEANOUT

NOTE: FLOWLINE TO MATCH TOP OF PIPE ON MAIN LINE FOR PIPES 18" AND SMALLER AND MATCH 1" OF MAIN LINE PIPE FOR PIPES LARGER THAN 18"

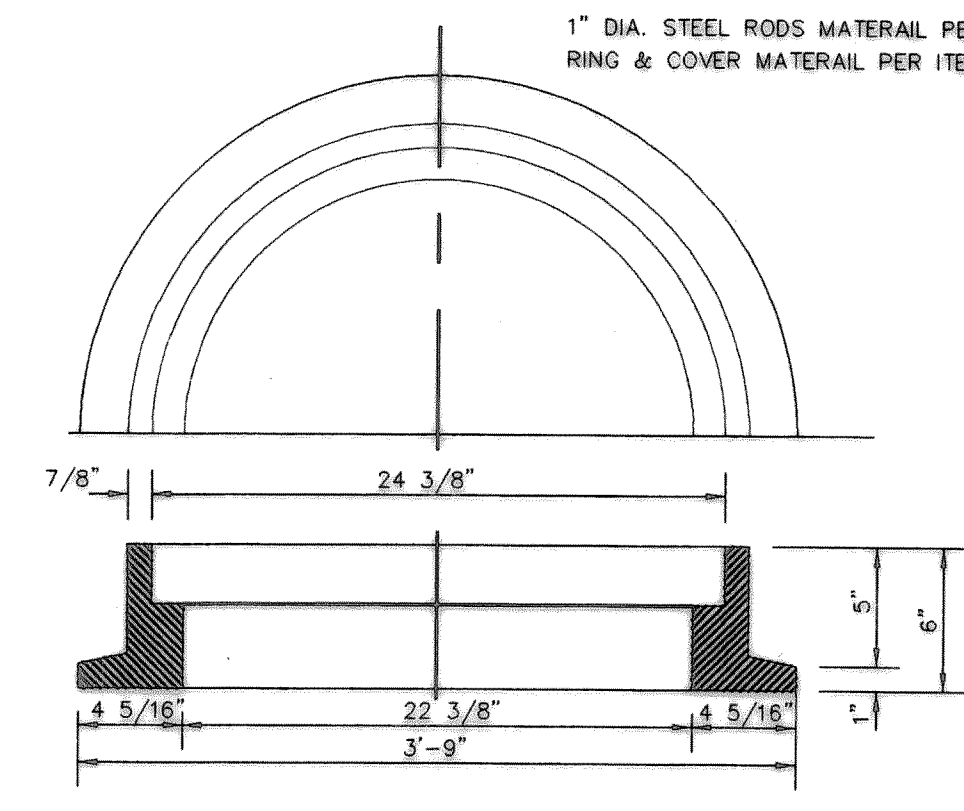


STANDARD PRECAST MANHOLE

NOTE: FOR TYPE "S" MANHOLES USE PRESSURE TYPE MANHOLE FRAME AND COVER. DO NOT USE GRADE RINGS. SET ANCHOR BOLTS DIRECTLY IN MANHOLE CONE.

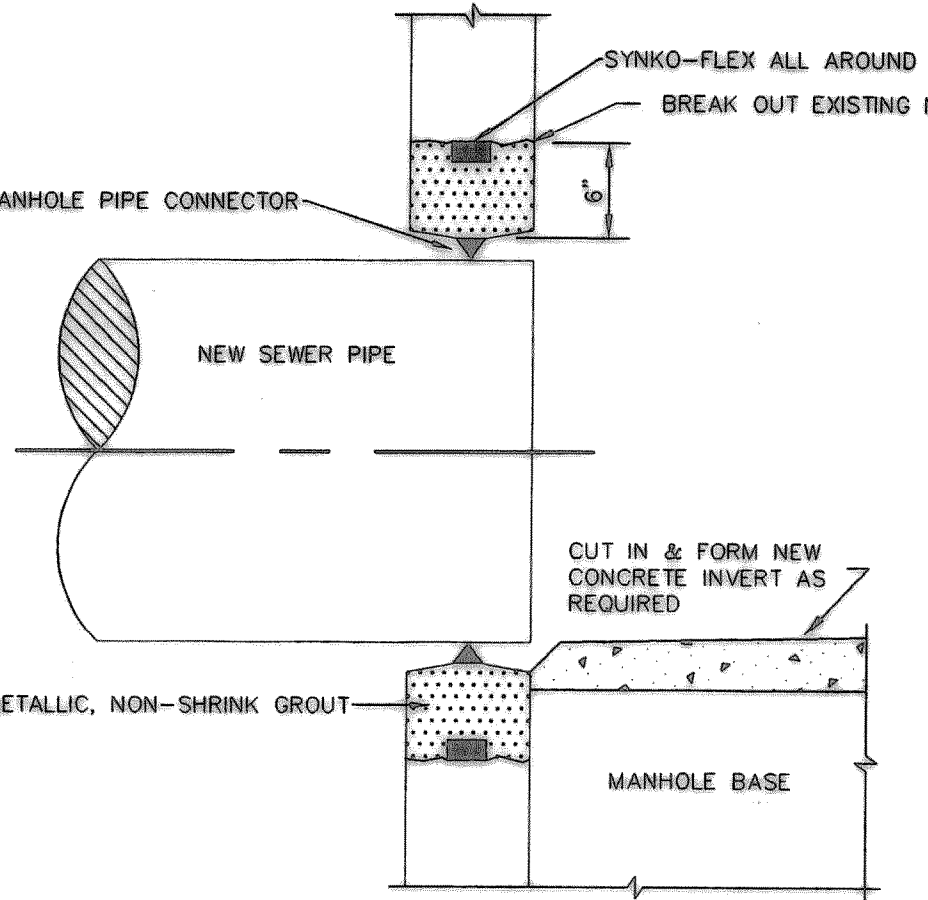


PLAN OF COVER

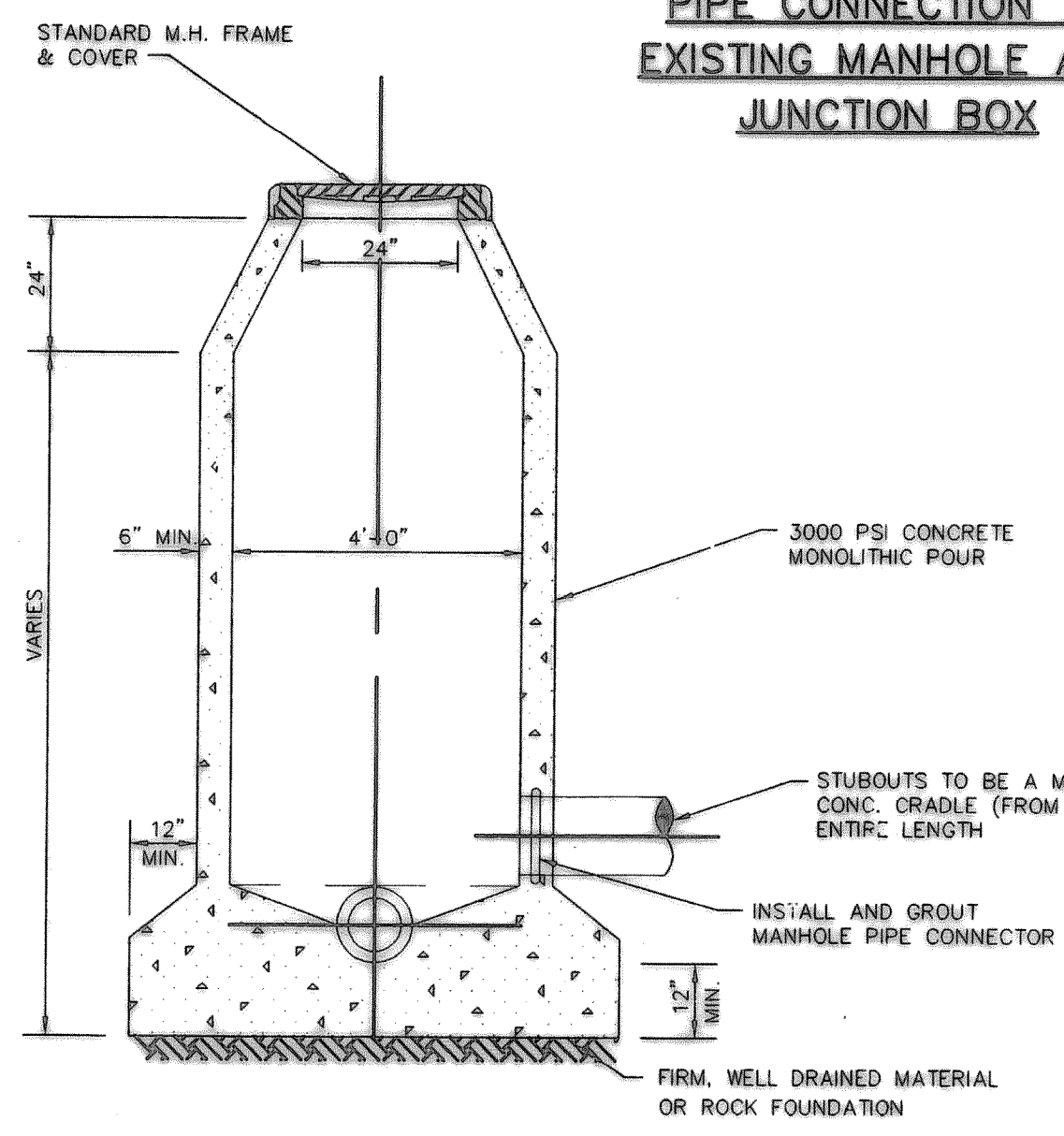


MANHOLE FRAME & COVER DETAIL

NOTE: THE BASS AND HAYES MANHOLE FRAME AND COVER, NO. 380-24P IS ACCEPTABLE.

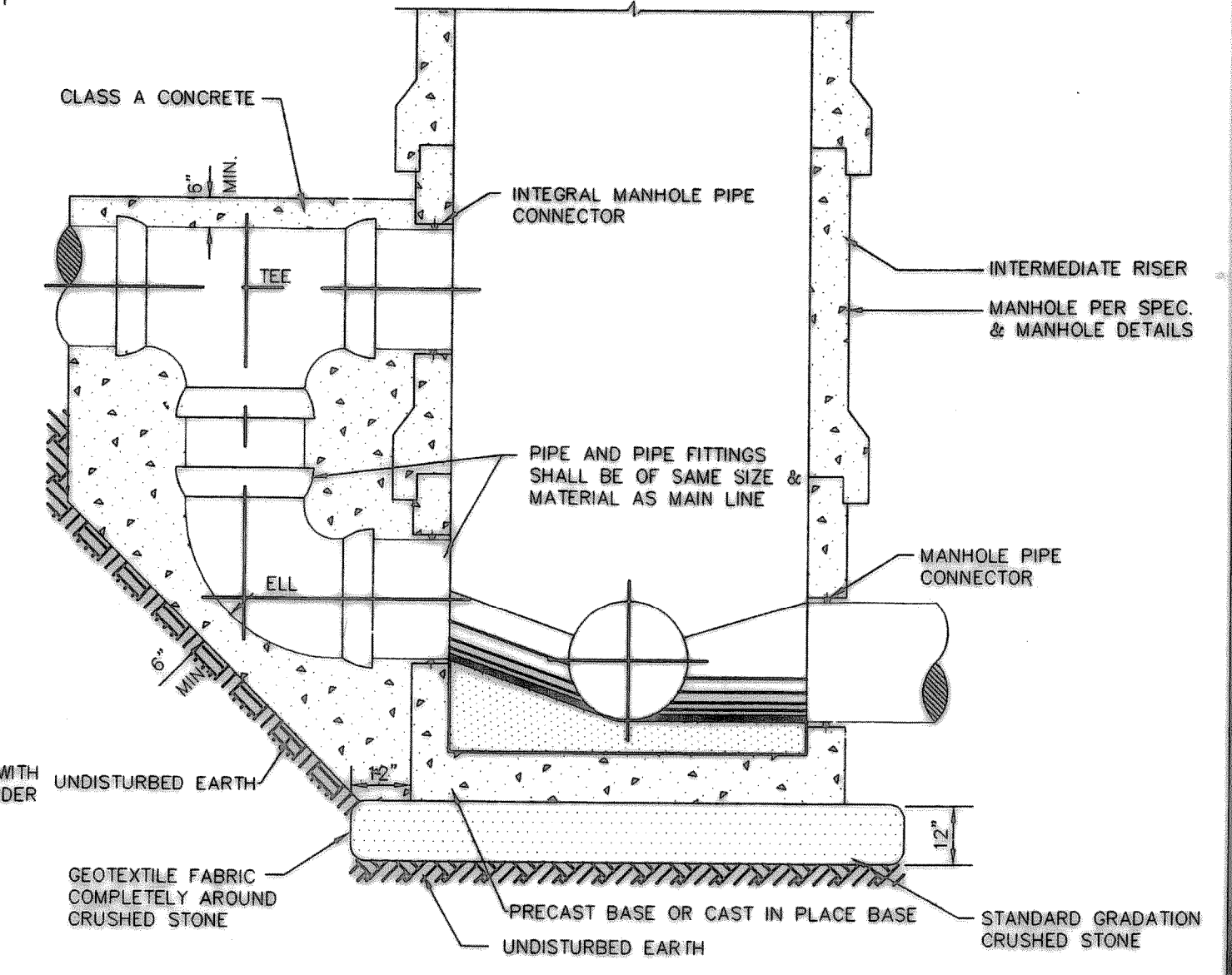


PIPE CONNECTION TO
EXISTING MANHOLE AND
JUNCTION BOX



STANDARD CAST-IN-PLACE MANHOLE

NOTE: FOR TYPE "S" MANHOLES USE PRESSURE TYPE MANHOLE FRAME AND COVER. DO NOT USE GRADE RINGS. SET ANCHOR BOLTS DIRECTLY IN MANHOLE CONE.



DROP MANHOLE BASE DETAIL

SANITARY SEWER DETAILS
 N.T.S.