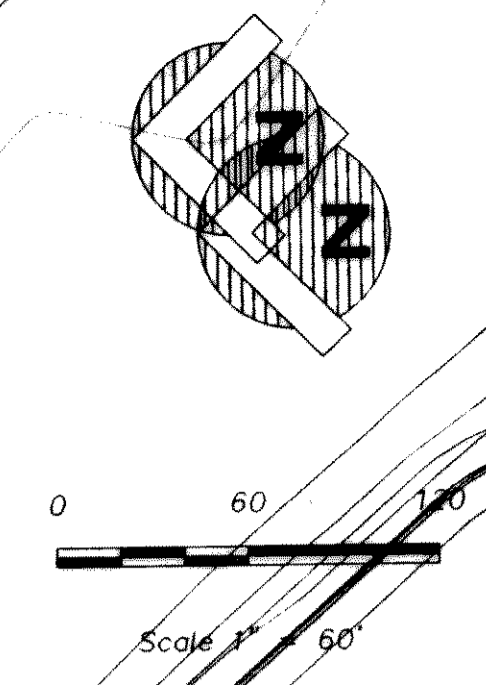
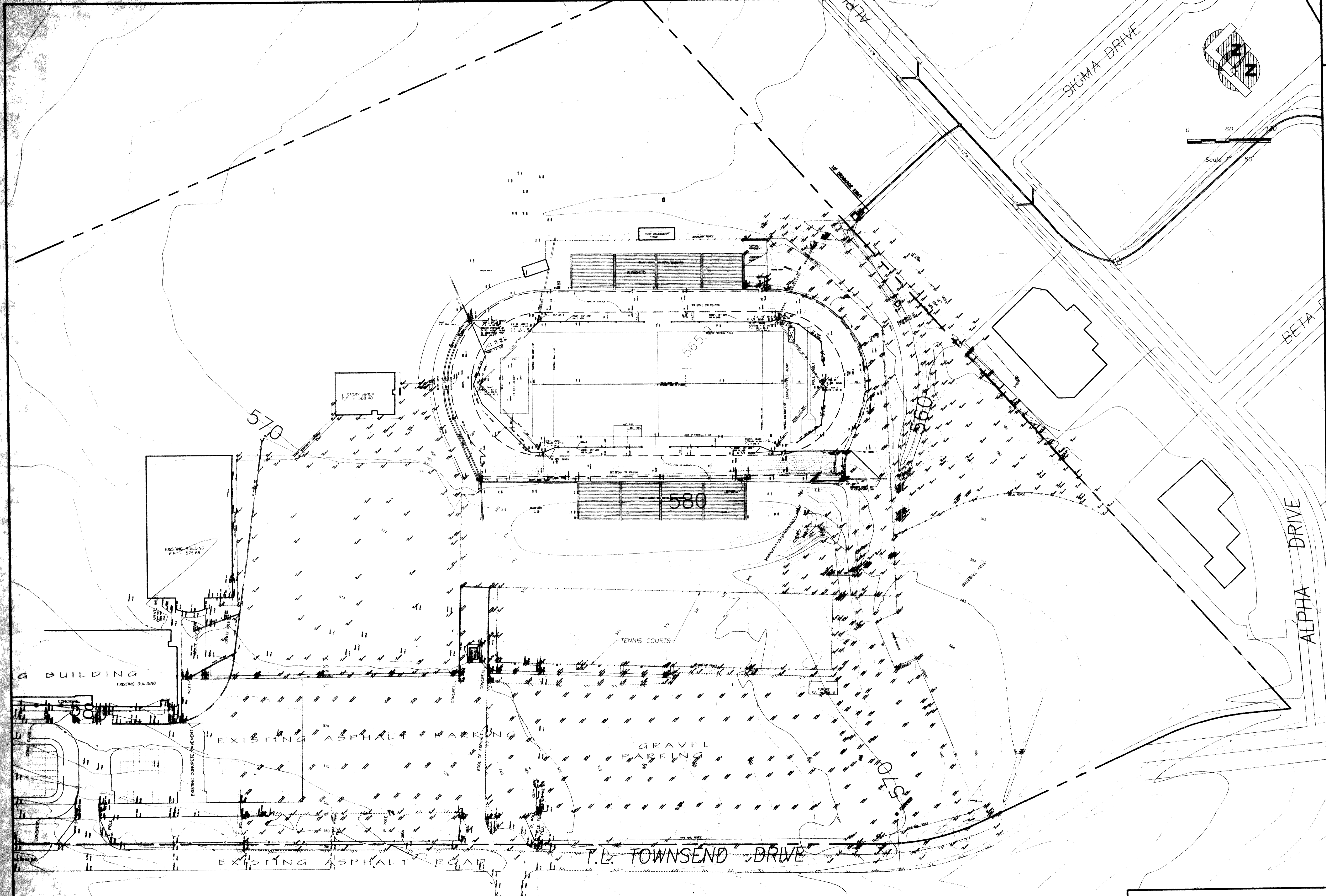
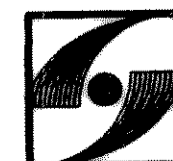


DATE: MAY 15, 1998
 DRAWN BY: R. HOWMAN
 CHECKED: R.A.H.
 COMM NO: 0494453
 REVISED: JULY 08, 1998

ROCKWALL I.S.D. 1998 PAVING IMPROVEMENTS
WILKERSON SANDERS STADIUM PAVING IMPROVEMENTS
ROCKWALL, TEXAS



TOPOGRAPHIC SURVEY
 SCALE: 1"=60'
 (THIS SHEET FOR REFERENCE ONLY)

 GLENN ENGINEERING PHONE 214-77-9851 100 DECKER COURT - SUITE 200 IRVING, TEXAS 75038	SHEET NUMBER OF 16	C 2.0R
	SET NUMBER	

Glenn
 s.w. Group Inc.
 Architects + Engineers

100-4110-0101 THE ROCKWALL LEVELING - I.DWG. M80 JUL 08 08 03 24 1998