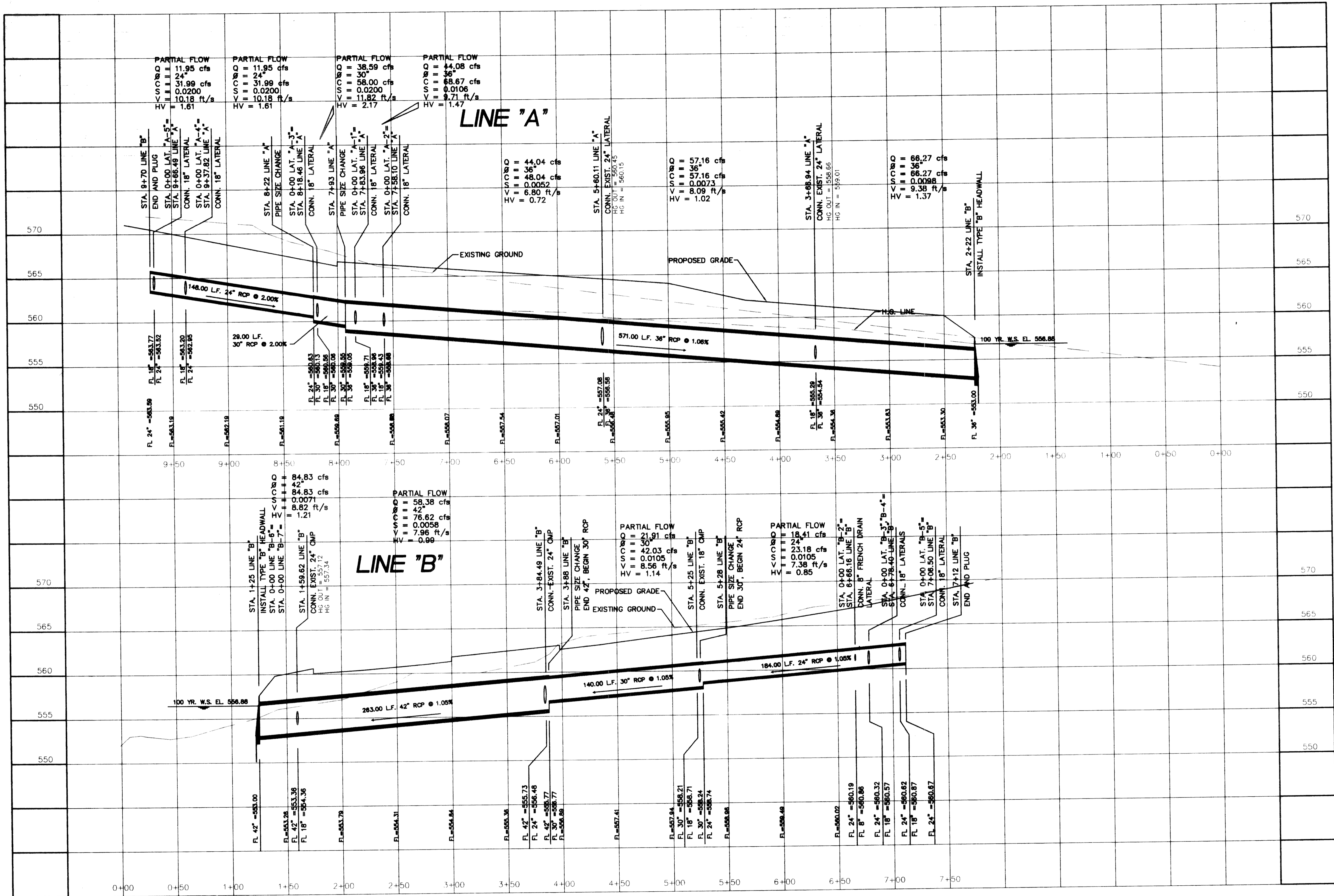
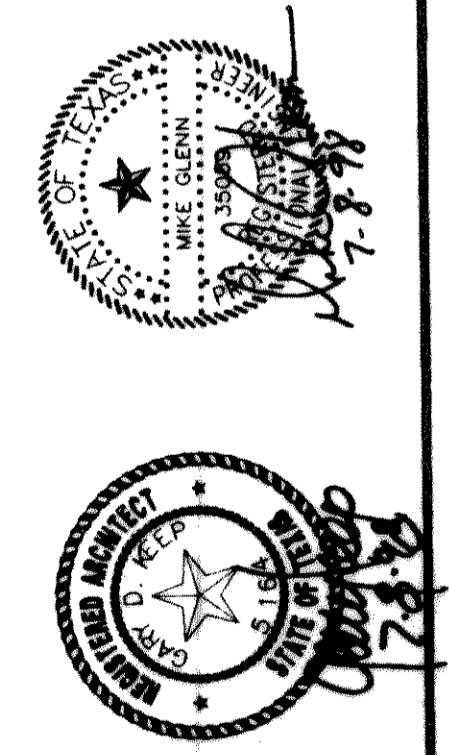


C:\ROCKWALL\LE\Profile181.dwg Wed Jul 09 14:03:44 1998



DATE: MAY 15, 1998
 DRAWN BY: R. HOWMAN
 CHECKED: R.A.H.
 CONN. NO: 0494453
 REVISION: JULY 08, 1998

ROCKWALL I.S.D. 1998 PAVING IMPROVEMENTS
WILKERSON SANDERS STADIUM PAVING IMPROVEMENTS
ROCKWALL, TEXAS



SHW Group Inc.
 Architects + Engineers

STORM SEWER PROFILES
 SCALE: 1"=40'

GLENN ENGINEERING
 PHONE 214-717-9551 FAX 214-719-4220
 100 DECKER COURT - SUITE 250 IRVING, TEXAS 75038

SHEET NUMBER	C
OF	16
SET NUMBER	2.8R