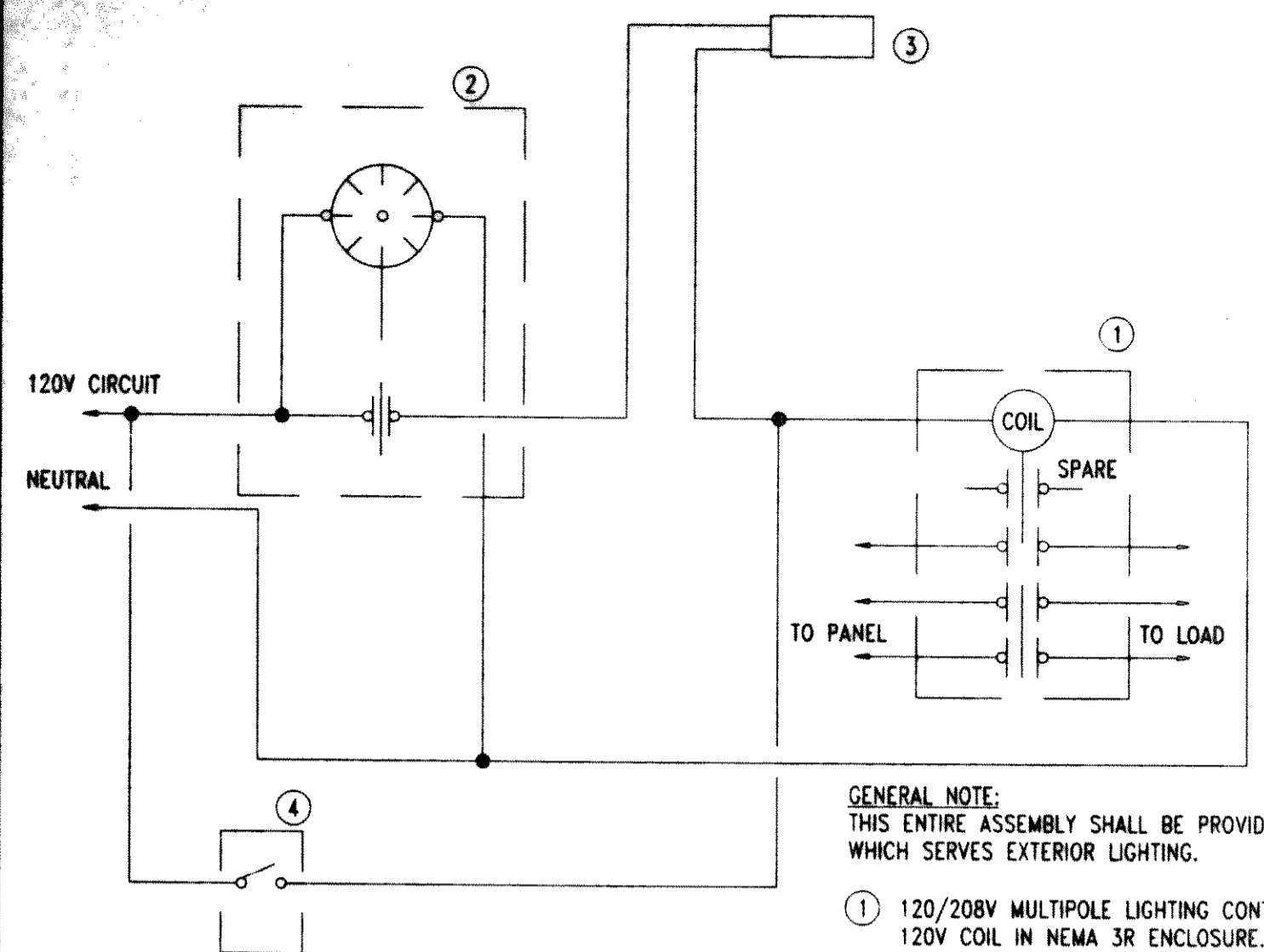
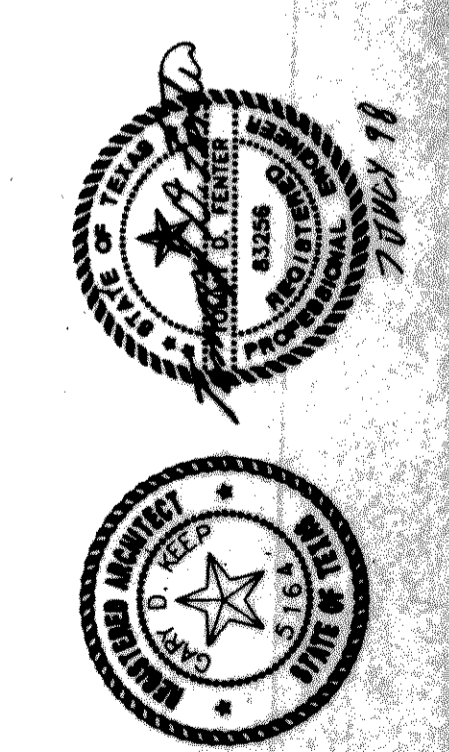
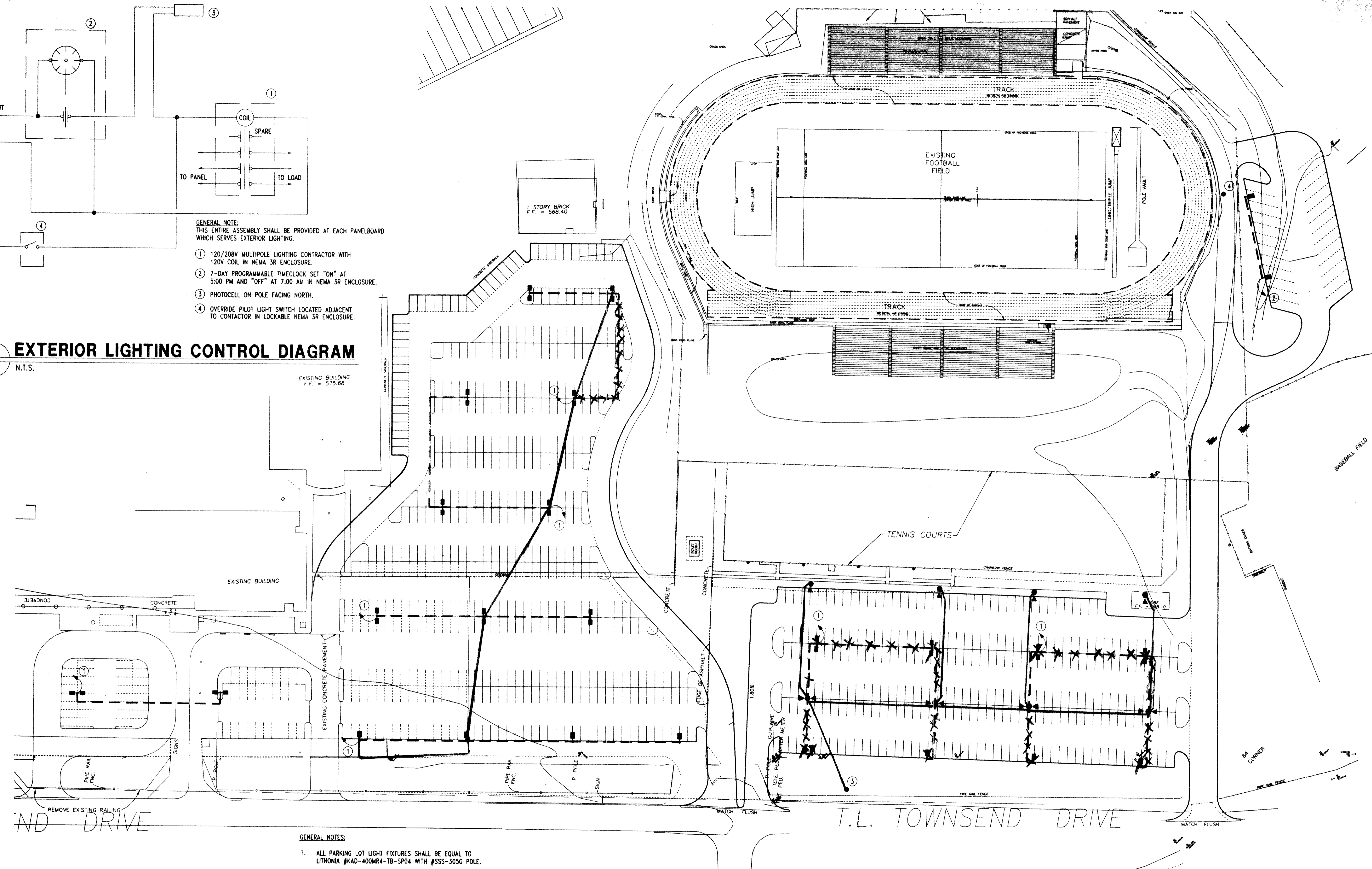


ROCKWALL I.S.D. 1998 PAVING IMPROVEMENTS
WILKERSON SNADERS STADIUM PAVING IMPROVEMENTS
ROCKWALL, TEXAS



- GENERAL NOTE:**
 THIS ENTIRE ASSEMBLY SHALL BE PROVIDED AT EACH PANELBOARD WHICH SERVES EXTERIOR LIGHTING.
- ① 120/208V MULTIPOLE LIGHTING CONTRACTOR WITH 120V COIL IN NEMA 3R ENCLOSURE.
 - ② 7-DAY PROGRAMMABLE TIMECLOCK SET "ON" AT 5:00 PM AND "OFF" AT 7:00 AM IN NEMA 3R ENCLOSURE.
 - ③ PHOTOCELL ON POLE FACING NORTH.
 - ④ OVERRIDE PILOT LIGHT SWITCH LOCATED ADJACENT TO CONTACTOR IN LOCKABLE NEMA 3R ENCLOSURE.

2 EXTERIOR LIGHTING CONTROL DIAGRAM
 9.01 N.T.S.



- GENERAL NOTES:**
- 1. ALL PARKING LOT LIGHT FIXTURES SHALL BE EQUAL TO LITHONIA #KAD-400MR4-TB-SP04 WITH #SSS-305G POLE.
- SITE PLAN NOTES:**
- ① PROVIDE 2-#8 WIRE, 1-#10 GROUND TO NEW PANEL AT POWER POLE. REFER TO NOTE #3.
 - ② PROVIDE 2-#8 WIRE, 1-#10 GROUND TO NEW PANEL AT FOOTBALL SCOREBOARD.
 - ③ PROVIDE NEW 100A MCB 120/208 1# 3W 30-POLE PANELBOARD AND METER ENCLOSURE AT EXISTING POWER POLE. PROVIDE TWO POLE, 20 AMP CIRCUIT BREAKER FOR EACH NEW PARKING LOT LIGHTING CIRCUIT AND FOUR SINGLE POLE, 20 AMP SPARES. VERIFY EXACT LOCATION OF POWER POLE.
 - ④ EXISTING SCOREBOARD. REPLACE EXISTING PANELBOARD WITH NEW 100A MCB 120/208 1# 3W 30-POLE PANELBOARD. PROVIDE TWO POLE, 20 AMP CIRCUIT BREAKER FOR EACH NEW PARKING LOT LIGHTING CIRCUIT AND FOUR SINGLE POLE, 20 AMP SPARES. PROVIDE BREAKERS FOR AND RECONNECT EXISTING FEEDERS AS REQUIRED.

1 SITE PLAN - LIGHTING
 9.01 1"=50'-0"

SUBMISSION OF BID WILL BE CONSIDERED ACKNOWLEDGEMENT THAT THE CONTRACTOR HAS VISITED THE SITE AND HAS VERIFIED ALL EXISTING JOB CONDITIONS AND INCLUDED ANY NECESSARY MODIFICATION TO EXISTING AND NEW WORK REQUIRED FOR INSTALLATION OF A COMPLETE AND WORKING SYSTEM.

EM Estes, McClure & Assoc., Inc.
 CONSULTING ENGINEERS
 3608 West Way, Tyler, Texas 75703
 903-581-2677
 101 East Park Boulevard, Suite 600, Plano, Texas 75074