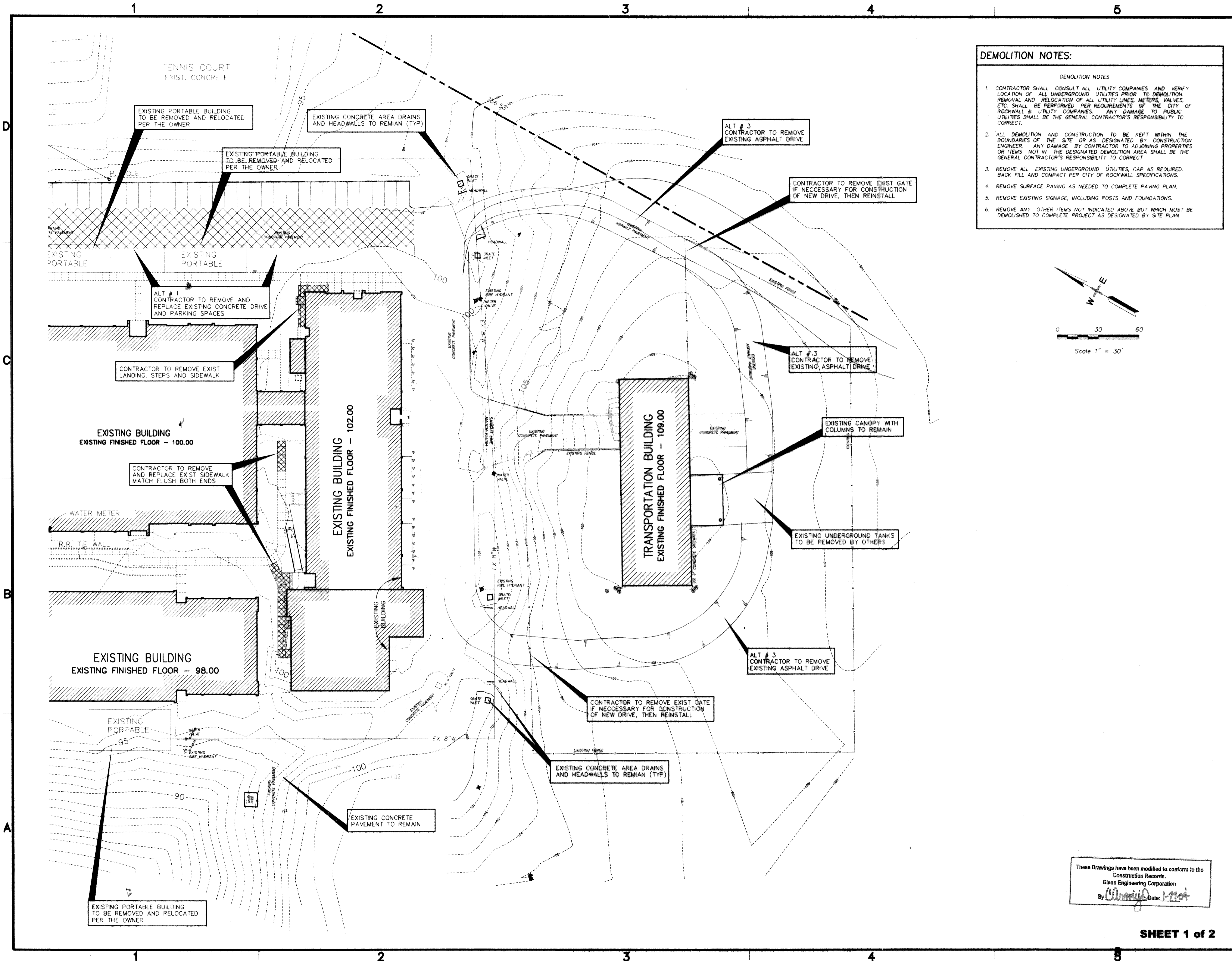
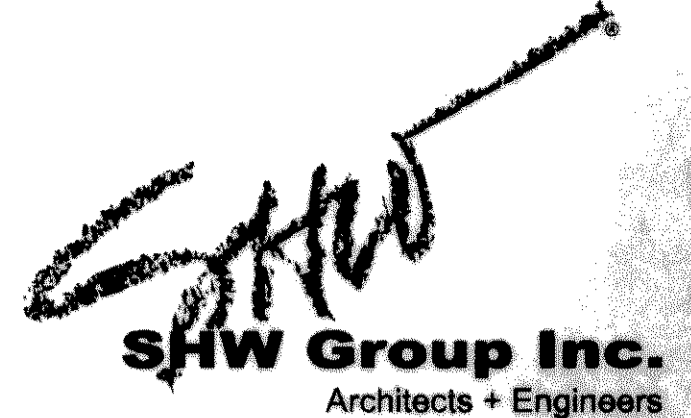
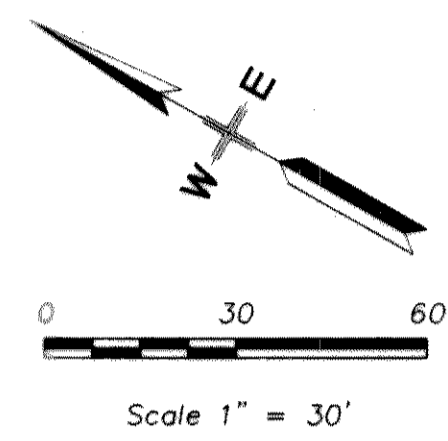


May 15, 2003 - 10:44am User: Rick
 \\ROBERT-NT\O-Drive\ROCKISD\WILLIAMS\2003 ADDITIONS\WORKING\WILLIAMS-NEW.dwg



- DEMOLITION NOTES:**
- DEMOLITION NOTES
1. CONTRACTOR SHALL CONSULT ALL UTILITY COMPANIES AND VERIFY LOCATION OF ALL UNDERGROUND UTILITIES PRIOR TO DEMOLITION. REMOVAL AND RELOCATION OF ALL UTILITY LINES, METERS, VALVES, ETC. SHALL BE PERFORMED PER REQUIREMENTS OF THE CITY OF ROCKWALL & UTILITY COMPANIES. ANY DAMAGE TO PUBLIC UTILITIES SHALL BE THE GENERAL CONTRACTOR'S RESPONSIBILITY TO CORRECT.
 2. ALL DEMOLITION AND CONSTRUCTION TO BE KEPT WITHIN THE BOUNDARIES OF THE SITE OR AS DESIGNATED BY CONSTRUCTION ENGINEER. ANY DAMAGE BY CONTRACTOR TO ADJOINING PROPERTIES OR ITEMS NOT IN THE DESIGNATED DEMOLITION AREA SHALL BE THE GENERAL CONTRACTOR'S RESPONSIBILITY TO CORRECT.
 3. REMOVE ALL EXISTING UNDERGROUND UTILITIES, CAP AS REQUIRED. BACK FILL AND COMPACT PER CITY OF ROCKWALL SPECIFICATIONS.
 4. REMOVE SURFACE PAVING AS NEEDED TO COMPLETE PAVING PLAN.
 5. REMOVE EXISTING SIGNAGE, INCLUDING POSTS AND FOUNDATIONS.
 6. REMOVE ANY OTHER ITEMS NOT INDICATED ABOVE BUT WHICH MUST BE DEMOLISHED TO COMPLETE PROJECT AS DESIGNATED BY SITE PLAN.



Consultants:

CIVIL:
Glenn Engineering

STRUCTURAL:
SHW GROUP, INC.

MEP:
Estes, McClure and Assoc., Inc

FOOD SERVICE:
Hg Rice and Company, Inc

LANDSCAPING:

Final Plans for Bidding and Construction



**PHASE TWO
 Administration Facility
 Williams MS
 Conversion
 Rockwall Independent
 School District**

Project Number: 1441.02.109
 Drawing Date: 05/15/03
 Drawn: R.HOWMAN
 Checked: RAH
 Scale: 1"=30'
 ACAD File: WILLIAMS-NEW.dwg
 © 2003 SHW Group, Inc.

Revisions:

1	DESCRIPTION

These Drawings have been modified to conform to the Construction Records.
 Glenn Engineering Corporation
 By *Williams* Date: 1-21-04

Sheet Title:
**DEMOLITION
 PLAN**