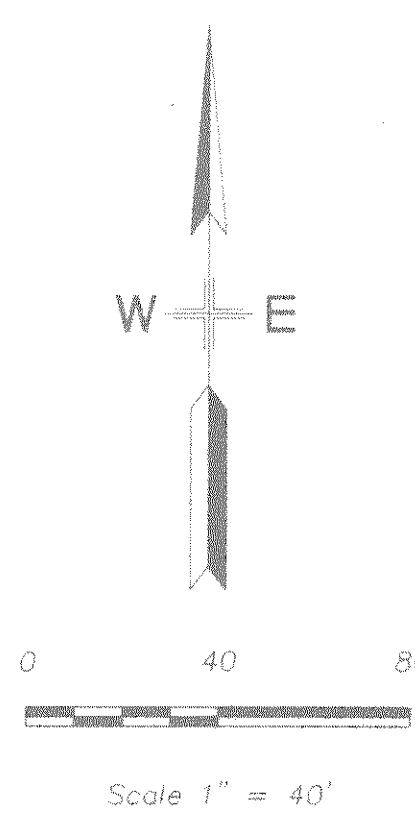
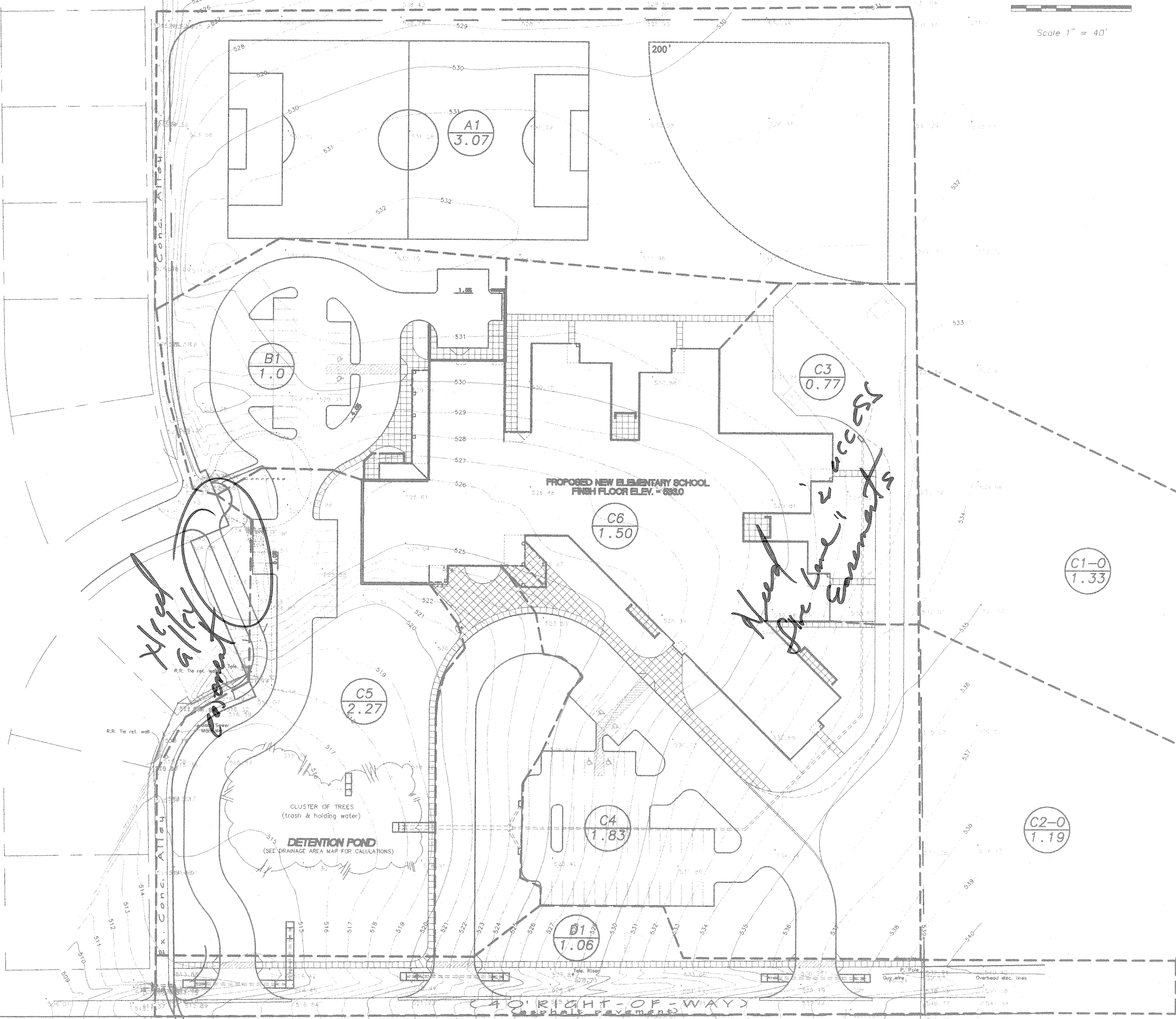


O'CONNELL DRIVE

HOLDEN DRIVE

HARLAN DR.

DALTON ROAD



STORM WATER RUNOFF CALCULATIONS

AREA NO.	DRAINAGE AREA 'A' (ACRES)	TIME OF CONCENTRATION (IN MINUTES)	RUNOFF COEFFICIENT 'C'	INTENSITY 1'6" (IN/HR)	DESIGN FLOW 'Q' (CFS)	INTENSITY 1'0" (IN/HR)	DESIGN FLOW 'Q' (CFS)
A1	3.07	10	0.50	6.2	9.5	9.8	15.0
B1	1.0	10	0.50	6.2	3.1	9.8	4.9
C1-O	1.33	10	0.75	6.2	6.2	9.8	9.8
C2-O	1.19	10	0.75	6.2	5.5	9.8	8.7
C3	0.77	10	0.50	6.2	2.3	9.8	3.8
C4	1.83	10	0.50	6.2	5.7	9.8	9.0
C5	2.27	10	0.50	6.2	7.0	9.8	11.1
C6	1.5	10	0.80	6.2	4.7	9.8	8.2
D1	1.06	10	0.50	6.2	3.3	9.8	5.2

DETENTION POND CALCULATIONS

POST DEVELOPMENT DRAINAGE AREAS C1 THRU C6 (8.89 AC.) = 62.90 c.f.s.
 PREDEVELOPMENT 8.89AC x 0.30 x 11.6 = 30.94 c.f.s.
 TOTAL C.F.S. TO DETAIN = 31.96 c.f.s.

DOWN STREAM RESTRAINTS - 18" RCP UNDER ALLEY - FULL FLOW CAP. @ 1.00% = 11.38
 11.38 USED FOR ALLOWABLE RELEASE RATE

RECORD NUMBER : 2 HYDROGRAPH REPORT
 TYPE : RESER MOD. PULS
 DESCRIPTION : outflow 1

[HYDROGRAPH INFORMATION]

Peak Discharge.....	=	9.73 (cfs)
Volume.....	=	0.72 (acft)
Time Interval.....	=	2.50 (min)
Time to Peak.....	=	17.50 (min)
Time of Base.....	=	2377.50 (min)
Peak Elevation.....	=	515.06 (ft)

[RESERVOIR STRUCTURE INFORMATION]

Reservoir #.....	=	1
Description.....	=	pond
Storage type.....	=	RECT VAULT
Max storage.....	=	28958.24 Cuft
Discharge type.....	=	COMP STAGE/DIS
Max discharge.....	=	11.41 cfs

TIME (min)	INFLW (cfs)	EQUATION	OUTFLOW STORAGE (cuft)	ELEVATION (ft)
1 2.5	13.01	13.01 + 0.00 = 13.01	0.04	973.12
2 5.0	26.02	39.04 + 13.94 = 52.98	0.25	3879.11
3 7.5	39.04	65.06 + 51.47 = 116.53	1.15	8653.88
4 10.0	52.05	91.09 + 114.24 = 205.33	3.30	15148.18
5 12.5	39.04	91.09 + 198.63 = 289.71	6.41	21247.68
6 15.0	26.02	65.06 + 276.89 = 341.95	8.68	24995.39
7 17.5	13.01	39.04 + 324.59 = 363.63	9.73	26842.64
8 20.0	0.00	13.01 + 344.18 = 357.19	9.42	26083.05
9 22.5	0.00	0.00 + 338.36 = 338.36	8.82	24737.90
10 25.0	0.00	0.00 + 321.32 = 321.32	7.76	23516.98
11 27.5	0.00	0.00 + 305.80 = 305.80	7.07	22404.87
12 30.0	0.00	0.00 + 291.66 = 291.66	6.49	21387.92
13 32.5	0.00	0.00 + 278.68 = 278.68	5.96	20454.28
14 35.0	0.00	0.00 + 266.77 = 266.77	5.49	19595.58
15 37.5	0.00	0.00 + 255.78 = 255.78	5.08	18802.44
16 40.0	0.00	0.00 + 245.61 = 245.61	4.71	18068.02
17 42.5	0.00	0.00 + 236.20 = 236.20	4.36	17287.60
18 45.0	0.00	0.00 + 227.47 = 227.47	4.08	16564.48
19 47.5	0.00	0.00 + 219.32 = 219.32	3.81	15892.88
20 50.0	0.00	0.00 + 211.70 = 211.70	3.56	15261.18
21 52.5	0.00	0.00 + 204.58 = 204.58	3.33	14669.78
22 55.0	0.00	0.00 + 197.92 = 197.92	3.13	14109.63
23 57.5	0.00	0.00 + 191.67 = 191.67	2.95	13573.54
24 60.0	0.00	0.00 + 185.76 = 185.76	2.78	13052.39
25 62.5	0.00	0.00 + 180.19 = 180.19	2.63	12541.71
26 65.0	0.00	0.00 + 174.94 = 174.94	2.48	12035.09
27 67.5	0.00	0.00 + 169.99 = 169.99	2.34	11537.24
28 70.0	0.00	0.00 + 165.32 = 165.32	2.22	11042.72
29 72.5	0.00	0.00 + 160.88 = 160.88	2.11	10550.90
30 75.0	0.00	0.00 + 156.66 = 156.66	2.01	10062.53
31 77.5	0.00	0.00 + 152.63 = 152.63	1.92	9577.89
32 80.0	0.00	0.00 + 148.80 = 148.80	1.83	9096.27
33 82.5	0.00	0.00 + 145.15 = 145.15	1.74	8618.00
34 85.0	0.00	0.00 + 141.67 = 141.67	1.66	8143.45
35 87.5	0.00	0.00 + 138.36 = 138.36	1.58	7672.02

DRAINAGE AREA MAP

Scale 1"=40'

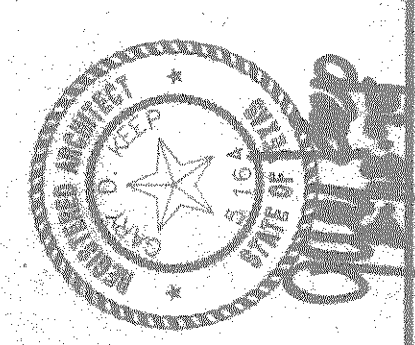
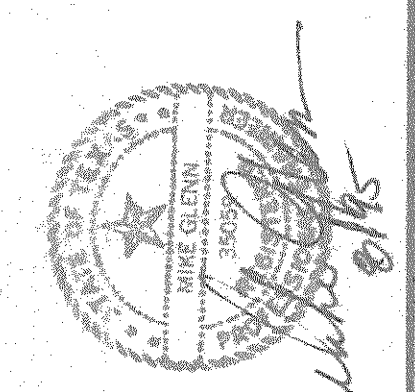
BENCHMARK:
 FLOW LINE OF THE UPSTREAM END OF THE 18" RCP
 RUNNING UNDER THE ALLEY AT THE SOUTHWEST
 CORNER OF THIS TRACT.
 ELEVATION: 511.50



PHONE 214-710-5181 FAX 214-710-4229
 100 DECKER COURT - SUITE 250 IRVING, TEXAS 75062

DATE: JUNE 27, 1995
 DRAWN BY: R.A.H.
 CHECKED: C.M.G.
 COMM NO: 0495417
 REVISED: 8-17-95

NEBBIE WILLIAMS ELEMENTARY SCHOOL
 ROCKWALL INDEPENDENT SCHOOL DISTRICT
 ROCKWALL, TEXAS



SHEET NUMBER: C
 OF 13: 2.5
 SET NUMBER: