

FILE

SHW
SHW Group, LLP
Architects + Engineers + Planners

Consultants:
CIVIL:
GLENN ENGINEERING CORP
STRUCTURAL:
SHW GROUP LLP
MEP:
ESTES McCLURE AND ASSOCIATES.

FINAL PLANS FOR BIDDING AND CONSTRUCTION



Rockwall Independent School District

NEBBIE WILLIAMS ELEMENTARY SCHOOL
ROCKWALL, TEXAS
RENOVATION

Project Number: 4106.055.00
Drawing Date: 1/17/07
Drawn: R.HOWMAN
Checked: RAH
Scale: AS SHOWN
ACAD File: NEBBIE-ADD-REV FIRE.dwg
© 2007 SHW Group LLP

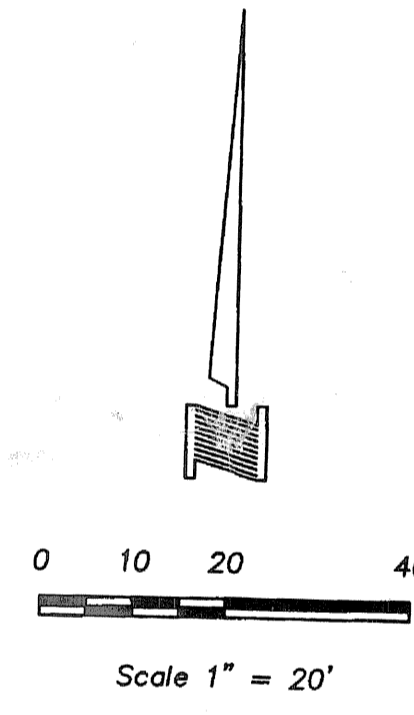
Revisions:
1 04/01/07 ADDED FIRE LANE

Sheet Title:
GRADING PLAN
APPROVED FOR CONSTRUCTION
APR 10 2007
City of Rockwall Engineering Dept.
City Engineer: *Op*

CG 1.01A

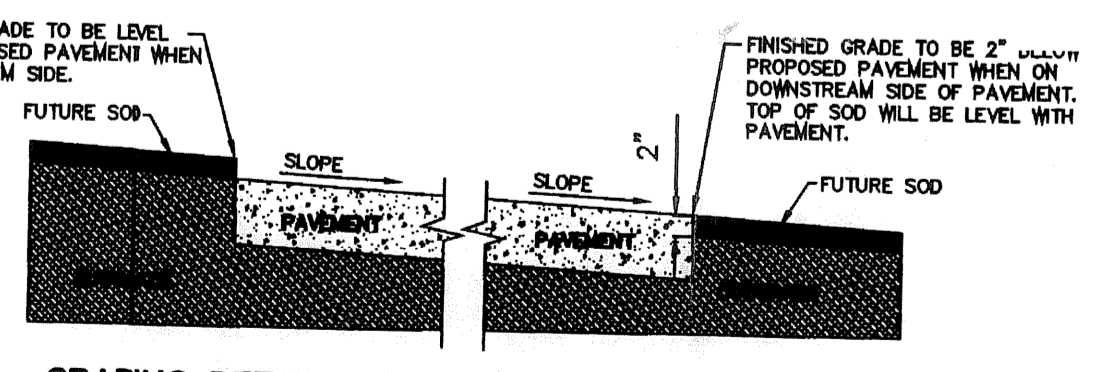
GENERAL GRADING & DRAINAGE NOTES

1. ALL CONSTRUCTION TO BE IN ACCORDANCE WITH THESE PLANS AND CITY OF ENNIS STANDARDS AND SPECIFICATIONS.
2. PRIOR TO STARTING CONSTRUCTION, THE CONTRACTOR SHALL MAKE CERTAIN THAT ALL REQUIRED PERMITS AND APPROVALS HAVE BEEN OBTAINED. NO CONSTRUCTION OR FABRICATION SHALL BEGIN UNTIL THE CONTRACTOR HAS RECEIVED AND THOROUGHLY REVIEWED ALL PLANS AND OTHER DOCUMENTS APPROVED BY ALL OF THE PERMITTING AUTHORITIES.
3. ALL WORK SHALL BE PERFORMED IN ACCORDANCE WITH THESE PLANS AND SPECIFICATIONS AND THE REQUIREMENTS AND STANDARDS OF THE LOCAL GOVERNING AUTHORITY.
4. IN THE EVENT AN ITEM IS NOT COVERED IN THE CITY OF ENNIS SPECIFICATIONS, THE CITY ENGINEER'S DECISION SHALL APPLY.
5. BARRICADING, TRAFFIC CONTROL, AND PROJECT SIGNS SHALL CONFORM TO "STATE DEPARTMENT OF HIGHWAYS AND PUBLIC TRANSPORTATION BARRICADING AND CONSTRUCTION STANDARDS".
6. THE GENERAL CONTRACTOR AND ALL SUB-CONTRACTORS SHALL VERIFY THE SUITABILITY OF ALL EXISTING AND PROPOSED SITE CONDITIONS INCLUDING GRADES AND DIMENSIONS BEFORE COMMENCEMENT OF ANY CONSTRUCTION. IN THE EVENT OF ANY CONFLICT AND PRIOR TO COMMENCEMENT OF ANY CONSTRUCTION, IMMEDIATELY NOTIFY ENGINEER. MINOR ADJUSTMENTS OF FINISH GRADE TO ACCOMPLISH SPOT DRAINAGE ARE ACCEPTABLE, IF NECESSARY, UPON PRIOR APPROVAL OF ENGINEER. PAVING INSTALLED SHALL FLUSH OUT AT ANY JUNCTURE WITH EXISTING PAVING.
7. THE LOCATIONS OF UNDERGROUND UTILITIES SHOWN ON THIS PLAN ARE BASED ON FIELD SURVEYS AND LOCAL UTILITY COMPANY RECORDS. IT SHALL BE THE CONTRACTOR'S FULL RESPONSIBILITY TO CONTACT THE VARIOUS UTILITY COMPANIES TO LOCATE THEIR UTILITIES PRIOR TO STARTING CONSTRUCTION.
8. CONTRACTOR SHALL VERIFY ALL EXISTING INVERTS AND RIM ELEVATIONS PRIOR TO CONSTRUCTION.
9. ALL PROPOSED CONTOURS ARE APPROXIMATE. PROPOSED SPOT ELEVATIONS AND DESIGNATED GRADIENT ARE TO BE USED IN THE EVENT OF ANY DISCREPANCIES.
10. IT IS THE CONTRACTOR'S RESPONSIBILITY TO LOCATE AND/OR ESTABLISH A BENCHMARK (BASE UPON EXISTING CONDITION SHOWN ON THIS PLAN) PRIOR TO CONSTRUCTION.
11. AT ALL DOORWAYS CONCRETE SIDEWALK SHALL MEET FLUSH WITH FOUNDATION SLAB AND MEET ALL ADA AND TDLR REQUIREMENTS.



LEGEND

(683.60TW)	= PROPOSED TOP OF WALK
(683.00TP)	= PROPOSED TOP OF PAVEMENT
(683.00TC)	= PROPOSED TOP OF CURB
(684.80EXTC)	= EXISTING TOP OF CURB
---685---	= EXISTING CONTOUR
(684)	= PROPOSED CONTOUR
→	= DIRECTION OF FLOW

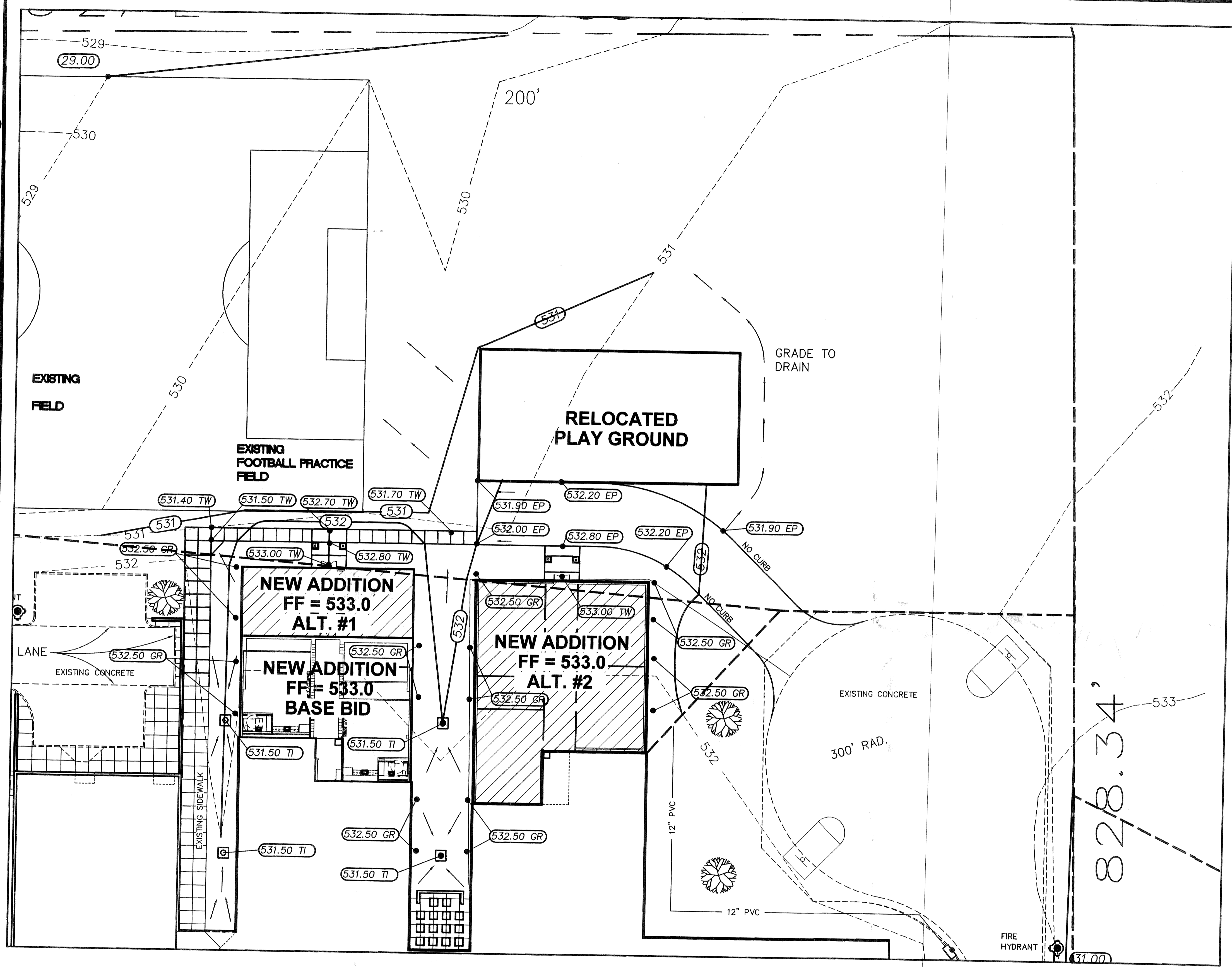


GRADING DETAIL FOR PAVEMENT WITHOUT CURB

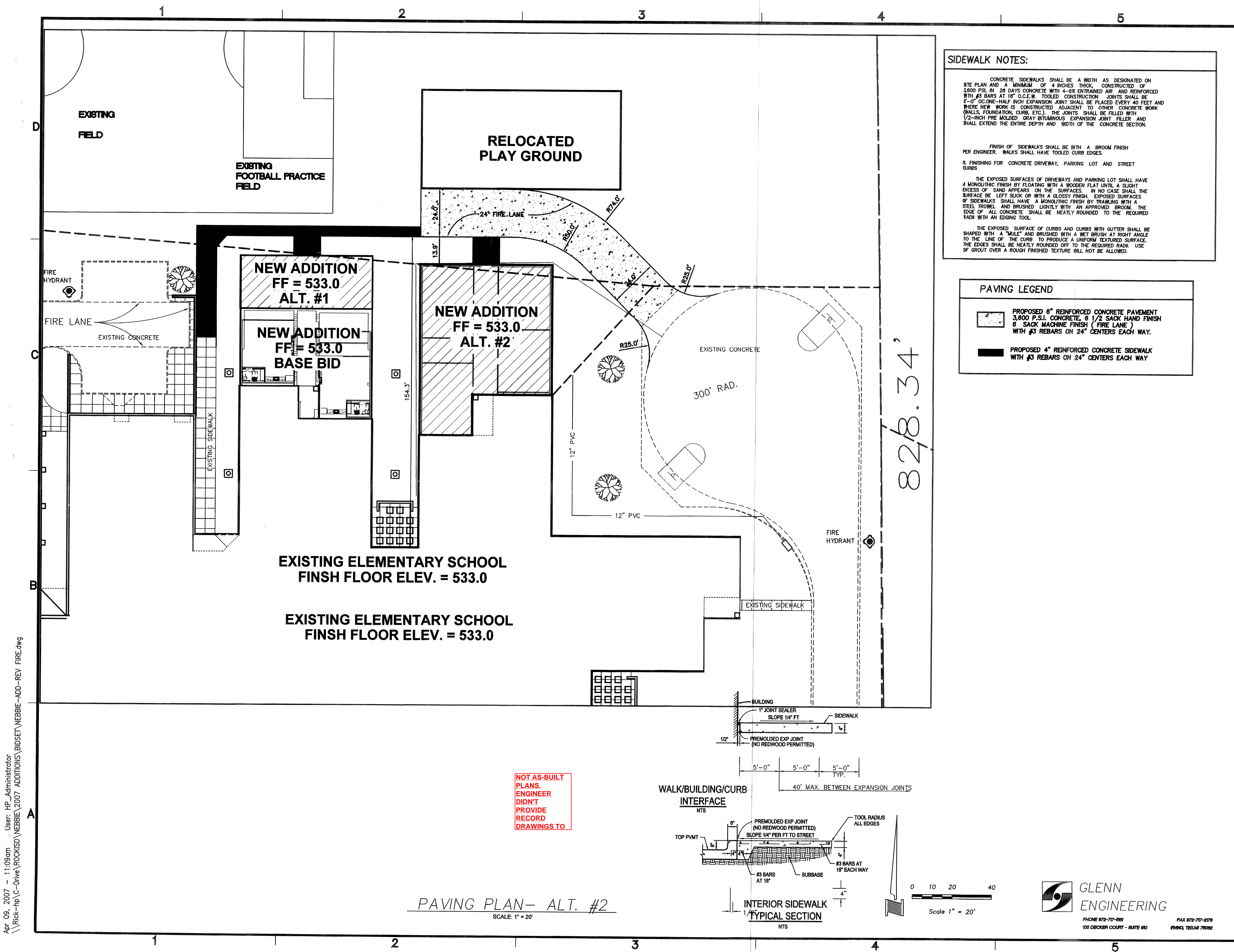
NOT AS-BUILT PLANS.
ENGINEER DIDN'T PROVIDE RECORD DRAWINGS TO CITY.

GLENN ENGINEERING
PHONE 972-772-0181
105 DECKEN COURT - SUITE 910
FAX 972-772-2076
IRVING, TEXAS 75062

GRADING PLAN- ALT. #2
SCALE: 1" = 20'



Apr 09, 2007 - 11:10am User: HP_Administrator
\\rick-hp\C-Drive\ROCKWALL\NEBBIE\2007_ADDITIONS\BIDSET\NEBBIE-ADD-REV_FIRE.dwg



SIDEWALK NOTES:

CONCRETE SIDEWALKS SHALL BE A WIDTH AS DESIGNATED ON SITE PLAN AND A MINIMUM OF 4 INCHES THICK, CONSTRUCTED OF 1,600 P.S.I. IN 28 DAYS CONCRETE WITH 4-6X ENTRAINED AIR AND REINFORCED WITH #3 BARS AT 18" O.C.E.W. TOOLED CONSTRUCTION JOINTS SHALL BE 5'-0" O.C. ONE-HALF INCH EXPANSION JOINT SHALL BE PLACED EVERY 40 FEET AND WHERE NEW WORK IS CONSTRUCTED ADJACENT TO OTHER CONCRETE WORK (WALLS, FOUNDATION, CURBS, ETC.), THE JOINTS SHALL BE FILLED WITH 1/2-INCH PRE MOLDED GRAY BITUMINOUS EXPANSION JOINT FILLER AND SHALL EXTEND THE ENTIRE DEPTH AND WIDTH OF THE CONCRETE SECTION.

FINISH OF SIDEWALKS SHALL BE WITH A BROOM FINISH PER ENGINEER. WALKS SHALL HAVE TOOLED CURB EDGES.

II. FINISHING FOR CONCRETE DRIVEWAY, PARKING LOT AND STREET CURBS

THE EXPOSED SURFACES OF DRIVEWAYS AND PARKING LOT SHALL HAVE A MONOLITHIC FINISH BY FLOATING WITH A WOODEN FLAT UNTIL A SLIGHT EXCESS OF SAND APPEARS ON THE SURFACES. IN NO CASE SHALL THE SURFACE BE LEFT SLICK OR WITH A GLOSSY FINISH. EXPOSED SURFACES OF SIDEWALKS SHALL HAVE A MONOLITHIC FINISH BY TROWLING WITH A STEEL TROWEL AND BRUSHED LIGHTLY WITH AN APPROVED BROOM. THE EDGE OF ALL CONCRETE SHALL BE NEATLY ROUNDED TO THE REQUIRED RADIUS WITH AN EDGING TOOL.

THE EXPOSED SURFACE OF CURBS AND CURBS WITH GUTTER SHALL BE SHAPED WITH A "MULE" AND BRUSHED WITH A WET BRUSH AT RIGHT ANGLE TO THE LINE OF THE CURB TO PRODUCE A UNIFORM TEXTURED SURFACE. THE EDGES SHALL BE NEATLY ROUNDED OFF TO THE REQUIRED RADIUS. USE OF GROUT OVER A ROUGH FINISHED TEXTURE WILL NOT BE ALLOWED.

PAVING LEGEND

PROPOSED 6" REINFORCED CONCRETE PAVEMENT 3,600 P.S.I. CONCRETE, 6 1/2 SACK HAND FINISH 6 SACK MACHINE FINISH (FIRE LANE) WITH #3 REBARS ON 24" CENTERS EACH WAY.

PROPOSED 4" REINFORCED CONCRETE SIDEWALK WITH #3 REBARS ON 24" CENTERS EACH WAY

SHW
SHW Group, LLP
 Architects + Engineers + Planners

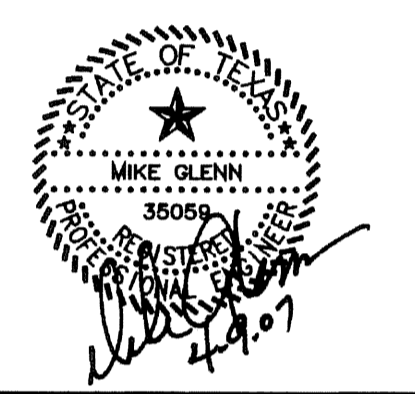
Consultants:

CIVIL:
 GLENN ENGINEERING CORP

STRUCTURAL:
 SHW GROUP LLP

MEP:
 ESTES McCURE AND ASSOCIATES.

FINAL PLANS FOR BIDDING AND CONSTRUCTION



Rockwall Independent School District

NEBBIE WILLIAMS ELEMENTARY SCHOOL
 ROCKWALL, TEXAS
 RENOVATION

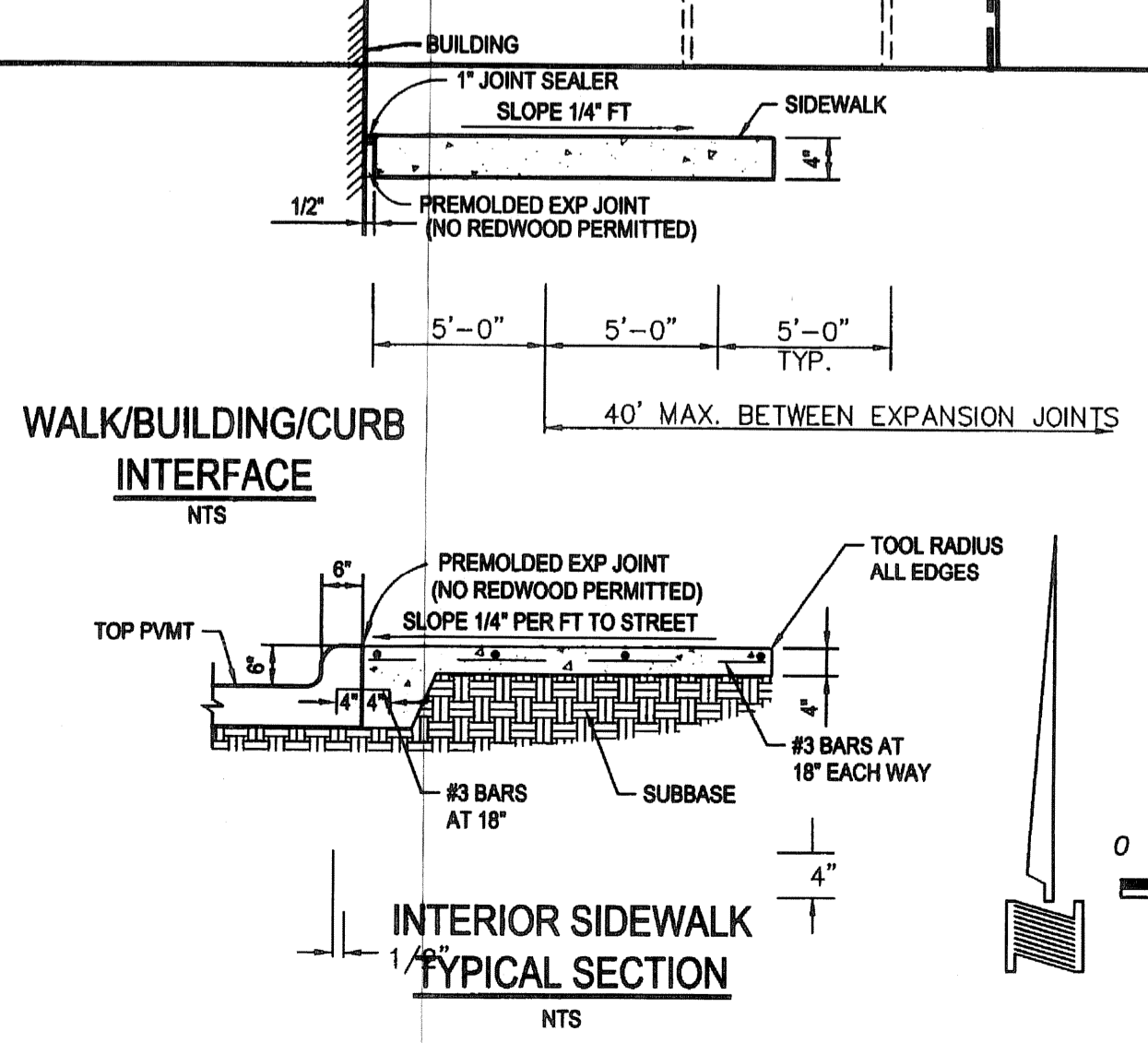
Project Number: 4106.055.00
 Drawing Date: 1/17/07
 Drawn: R.HOWMAN
 Checked: RAH
 Scale: AS SHOWN
 ACAD File: NEBBIE-ADD-REV FIRE.dwg
 © 2007 SHW Group LLP

Revisions:

1 04/01/07 ADDED FIRE LANE

Sheet Title:
PAVING PLAN

APPROVED FOR CONSTRUCTION
 APR 10 2007
 City of Rockwall Engineering Dept.
 City Engineer



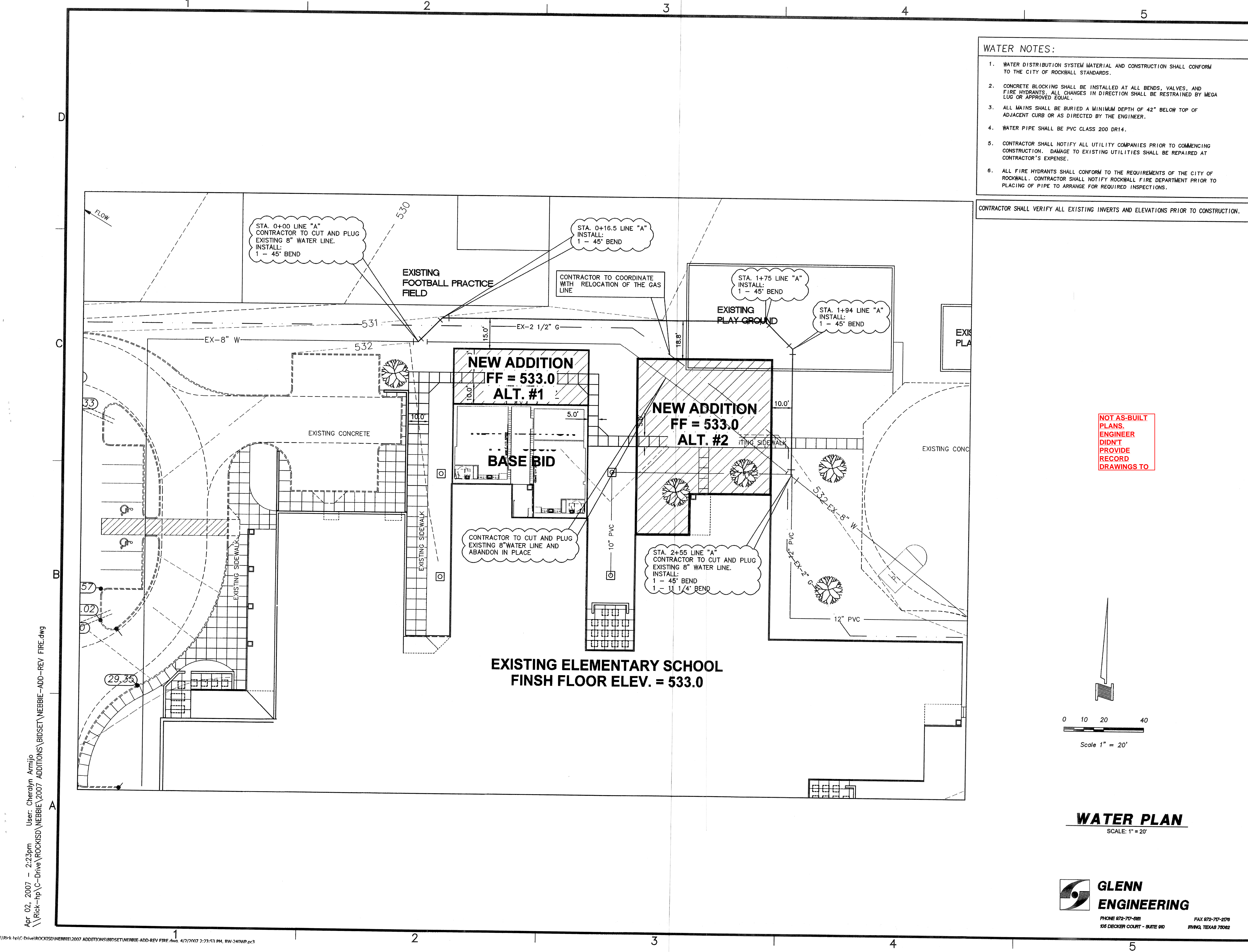
NOT AS-BUILT PLANS. ENGINEER DIDN'T PROVIDE RECORD DRAWINGS TO

PAVING PLAN- ALT. #2
 SCALE: 1" = 20'

82/8.34'

Apr 09, 2007 - 11:09am - User: HP_Administrator
 \\Rock-hp\C-Drive\ROCKWALL\NEBBIE\2007_ADDITIONS\BIDSET\NEBBIE-ADD-REV_FIRE.dwg

CP 1.01



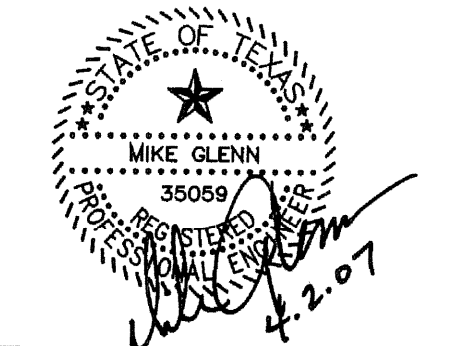
- WATER NOTES:**
1. WATER DISTRIBUTION SYSTEM MATERIAL AND CONSTRUCTION SHALL CONFORM TO THE CITY OF ROCKWALL STANDARDS.
 2. CONCRETE BLOCKING SHALL BE INSTALLED AT ALL BENDS, VALVES, AND FIRE HYDRANTS. ALL CHANGES IN DIRECTION SHALL BE RESTRAINED BY MEGA LUG OR APPROVED EQUAL.
 3. ALL MAINS SHALL BE BURIED A MINIMUM DEPTH OF 42" BELOW TOP OF ADJACENT CURB OR AS DIRECTED BY THE ENGINEER.
 4. WATER PIPE SHALL BE PVC CLASS 200 DR14.
 5. CONTRACTOR SHALL NOTIFY ALL UTILITY COMPANIES PRIOR TO COMMENCING CONSTRUCTION. DAMAGE TO EXISTING UTILITIES SHALL BE REPAIRED AT CONTRACTOR'S EXPENSE.
 6. ALL FIRE HYDRANTS SHALL CONFORM TO THE REQUIREMENTS OF THE CITY OF ROCKWALL. CONTRACTOR SHALL NOTIFY ROCKWALL FIRE DEPARTMENT PRIOR TO PLACING OF PIPE TO ARRANGE FOR REQUIRED INSPECTIONS.

CONTRACTOR SHALL VERIFY ALL EXISTING INVERTS AND ELEVATIONS PRIOR TO CONSTRUCTION.

SHW
SHW Group, LLP
 Architects + Engineers + Planners

Consultants:
 CIVIL:
 GLENN ENGINEERING CORP
 STRUCTURAL:
 SHW GROUP LLP
 MEP:
 ESTES McCLURE AND ASSOCIATES.

FINAL PLANS FOR BIDDING AND CONSTRUCTION



Rockwall Independent School District

AMY PARKS HEATH ELEMENTARY SCHOOL
 ROCKWALL, TEXAS
 ADDITION AND RENOVATION

Project Number: 4106.055.00
 Drawing Date: 10/25/06
 Drawn: R.HOWMAN
 Checked: RAH
 Scale: AS SHOWN
 ACAD File: NEBBIE-ADD-REV FIRE.dwg
 © 2006 SHW Group LLP

Revisions:

NO.	DESCRIPTION
1	----

Sheet Title:
WATER PLAN
 APPROVED FOR CONSTRUCTION
 APR 10 2007
 City of Rockwall Engineering Dept.
 City Engineer: _____

WATER PLAN
 SCALE: 1" = 20'

GLENN ENGINEERING
 PHONE 972-777-6961 FAX 972-770-2076
 105 DECKER COURT - SUITE 910 IRVING, TEXAS 75062

CU 1.01

Apr 02, 2007 - 2:23pm User: Cherylm Armijo
 \\Rock-hp\C-Drive\ROCKISD\NEBBIE\2007 ADDITIONS\BIDSET\NEBBIE-ADD-REV FIRE.dwg
 \\Rock-hp\C-Drive\ROCKISD\NEBBIE\2007 ADDITIONS\BIDSET\NEBBIE-ADD-REV FIRE.dwg