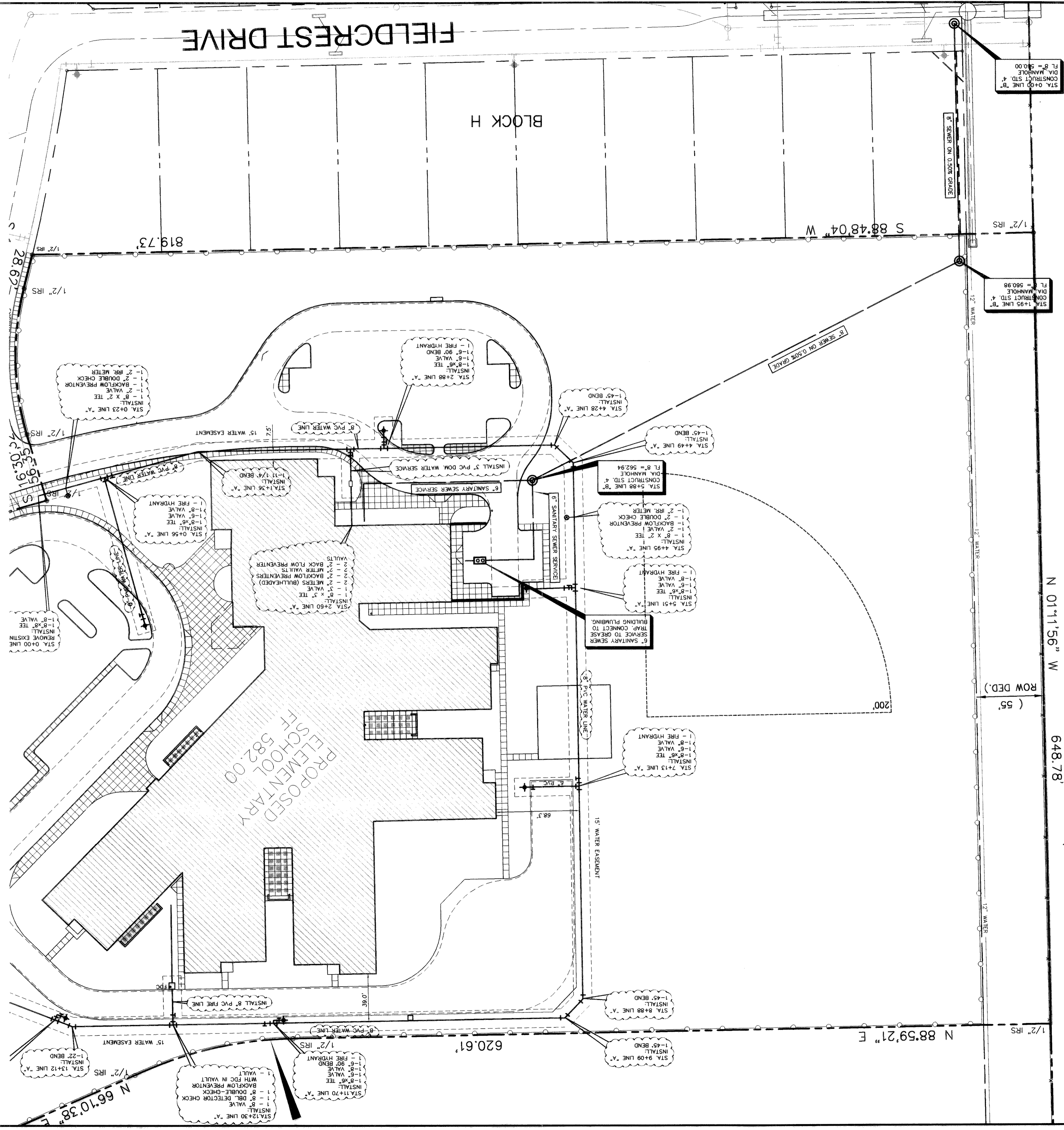


FUTURE 205 BYPASS
(110' ROW)

N 01'11.56" W
648.78'

ROW DED. (55')



STA. 0+00 LINE "B"
CONSTRUCT STD. 4"
DIA. MANHOLE
FL B = 580.00

STA. 1+95 LINE "B"
CONSTRUCT STD. 4"
DIA. MANHOLE
FL B = 580.98

STA. 5+08 LINE "B"
CONSTRUCT STD. 4"
DIA. MANHOLE
FL B = 562.94

STA. 4+95 LINE "A"
INSTALL:
1 - 8" X 2' TEE
1 - 2" VALVE
1 - 2" RR. METER
1 - 2" BACKFLOW PREVENTOR

STA. 5+51 LINE "A"
INSTALL:
1 - 8" X 2' TEE
1 - 2" VALVE
1 - 2" RR. METER
1 - 2" BACKFLOW PREVENTOR

STA. 7+13 LINE "A"
INSTALL:
1 - 8" X 2' TEE
1 - 2" VALVE
1 - 2" RR. METER

STA. 8+88 LINE "A"
INSTALL:
1 - 8" X 2' TEE
1 - 2" VALVE
1 - 2" RR. METER

STA. 9+09 LINE "A"
INSTALL:
1 - 8" X 2' TEE
1 - 2" VALVE
1 - 2" RR. METER

STA. 11+70 LINE "A"
INSTALL:
1 - 8" X 2' TEE
1 - 2" VALVE
1 - 2" RR. METER

STA. 12+30 LINE "A"
INSTALL:
1 - 8" X 2' TEE
1 - 2" VALVE
1 - 2" RR. METER

STA. 13+12 LINE "A"
INSTALL:
1 - 8" X 2' TEE
1 - 2" VALVE
1 - 2" RR. METER

STA. 2+88 LINE "A"
INSTALL:
1 - 8" X 2' TEE
1 - 2" VALVE
1 - 2" RR. METER

STA. 2+90 LINE "A"
INSTALL:
1 - 8" X 2' TEE
1 - 2" VALVE
1 - 2" RR. METER

STA. 2+92 LINE "A"
INSTALL:
1 - 8" X 2' TEE
1 - 2" VALVE
1 - 2" RR. METER

STA. 2+94 LINE "A"
INSTALL:
1 - 8" X 2' TEE
1 - 2" VALVE
1 - 2" RR. METER

STA. 2+96 LINE "A"
INSTALL:
1 - 8" X 2' TEE
1 - 2" VALVE
1 - 2" RR. METER

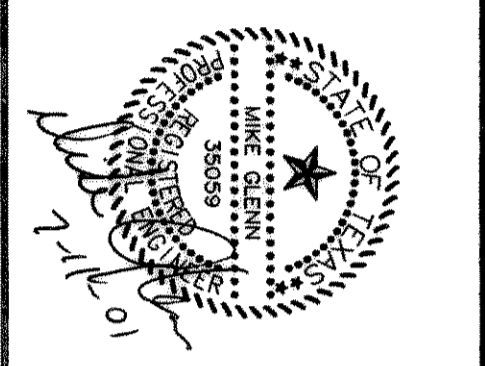
STA. 2+98 LINE "A"
INSTALL:
1 - 8" X 2' TEE
1 - 2" VALVE
1 - 2" RR. METER



UTILITY PLAN
SCALE: 1" = 60'

These Drawings have been modified to conform to the
Construction Records
Glenn Engineering Corporation
By: *[Signature]* Date: 11-25-04

SET NUMBER
OF 2.16A
SHEET NUMBER
C
SJM Group Inc.
Architects + Engineers



FINAL PLANS FOR BIDDING
AND CONSTRUCTION

ROCKWALL ELEMENTARY #8
ROCKWALL INDEPENDENT SCHOOL DISTRICT
ROCKWALL, TEXAS

DATE: MAY 2, 2001
DRAWN BY: R. HOWMAN
CHECKED: R. HOWMAN
FOUN: R. HOWMAN
REVISIONS: NONE

WATER NOTES:

1. WATER DISTRIBUTION SYSTEM MATERIAL AND CONSTRUCTION SHALL CONFORM TO THE CITY OF ROCKWALL STANDARDS.
2. CONCRETE BLOCKING SHALL BE INSTALLED AT ALL BENDS, VALVES, AND FIRE HYDRANTS. ALL CHANGES IN DIRECTION SHALL BE RESTRAINED BY MEGA LUG OR APPROVED EQUAL.
3. ALL MAINS SHALL BE BURIED A MINIMUM DEPTH OF 42" BELOW TOP OF ADJACENT CURB OR AS DIRECTED BY THE ENGINEER.
4. WATER PIPE SHALL BE PVC CLASS 200 DR14.
5. CONTRACTOR SHALL NOTIFY ALL UTILITY COMPANIES PRIOR TO COMMENCING CONSTRUCTION. DAMAGE TO EXISTING UTILITIES SHALL BE REPAIRED AT CONTRACTOR'S EXPENSE.
6. ALL FIRE HYDRANTS SHALL CONFORM TO THE REQUIREMENTS OF THE CITY OF ROCKWALL. CONTRACTOR SHALL NOTIFY ROCKWALL FIRE DEPARTMENT PRIOR TO PLACING OF PIPE TO ARRANGE FOR REQUIRED INSPECTIONS.

CONTRACTOR SHALL VERIFY ALL EXISTING INVERTS AND ELEVATIONS PRIOR TO CONSTRUCTION.

SANITARY SEWER NOTES:

1. CONTRACTOR SHALL NOTIFY ALL UTILITY COMPANIES AND OTHERS WHO MAY HAVE BURIED EQUIPMENT OR PIPELINES IN THE VICINITY OF CONSTRUCTION PRIOR TO COMMENCING CONSTRUCTION. DAMAGE TO EXISTING UTILITIES SHALL BE REPAIRED AT THE CONTRACTOR'S EXPENSE.
2. CONTRACTOR SHALL VERIFY THE LOCATION AND DEPTH OF TIE-IN TO EXISTING SEWER SYSTEM. GRADES NEED REVISING DUE TO UNFORESEEN CONFLICTS. CONTRACTOR SHALL NOTIFY THE ENGINEER PRIOR TO LAYING PIPE.
3. UNLESS OTHERWISE REQUIRED, ALL SANITARY SEWER PIPE, MANHOLES, AND RELATED APPURTENANCES SHALL CONFORM TO THE MATERIAL AND CONSTRUCTION SPECIFICATIONS AS SET FORTH IN THE CITY OF ROCKWALL STANDARD SPECIFICATIONS.
4. PARTICULAR ATTENTION SHALL BE PAID TO THE INSTALLATION, EMBEDMENT, AND BACKFILL OF SEWER PIPE. ALL EMBEDMENT SHALL CONFORM TO CITY OF ROCKWALL CLASS "B".
5. SPECIAL CARE SHALL BE TAKEN IN ADHERING TO THOSE SPECIFICATIONS REGARDING PIPE JOINTS, PIPE EMBEDMENT AND TESTING OF INSTALLED WATER AND SANITARY SEWER PIPES.
6. SEWER PIPE SHALL BE PVC SDR 35. IF DEPTH IS LESS THAN 10 FEET; SDR 26 IF DEPTH IS GREATER THAN 10 FEET DEEP.
7. SERVICES SHALL BE 4" PVC, SDR 35, AND SHALL BE INSTALLED AS SHOWN.
8. CONTRACTOR SHALL MEET ALL O.S., H.A., REQUIREMENTS REGARDING TRENCH SAFETY IN THE CONSTRUCTION OF THIS SEWER SERVICE.

