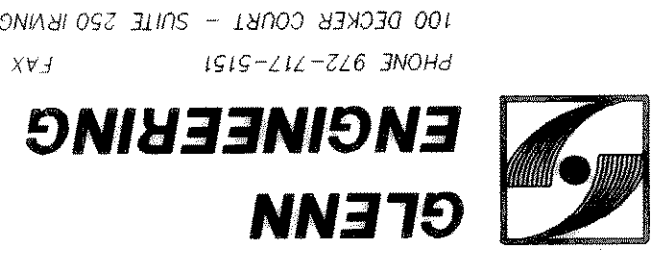


By *[Signature]* Date: 2-22-04
Glenn Engineering Corporation
Construction Records
These Drawings have been modified to conform to the

FOR REFERENCE ONLY
TOPOGRAPHIC SURVEY
Scale 1"=60'



100 DECKER COURT - SUITE 250 IRVING, TEXAS 75062
PHONE 972-717-5151 FAX 972-719-4229

SET NUMBER
SHEET NUMBER
OF

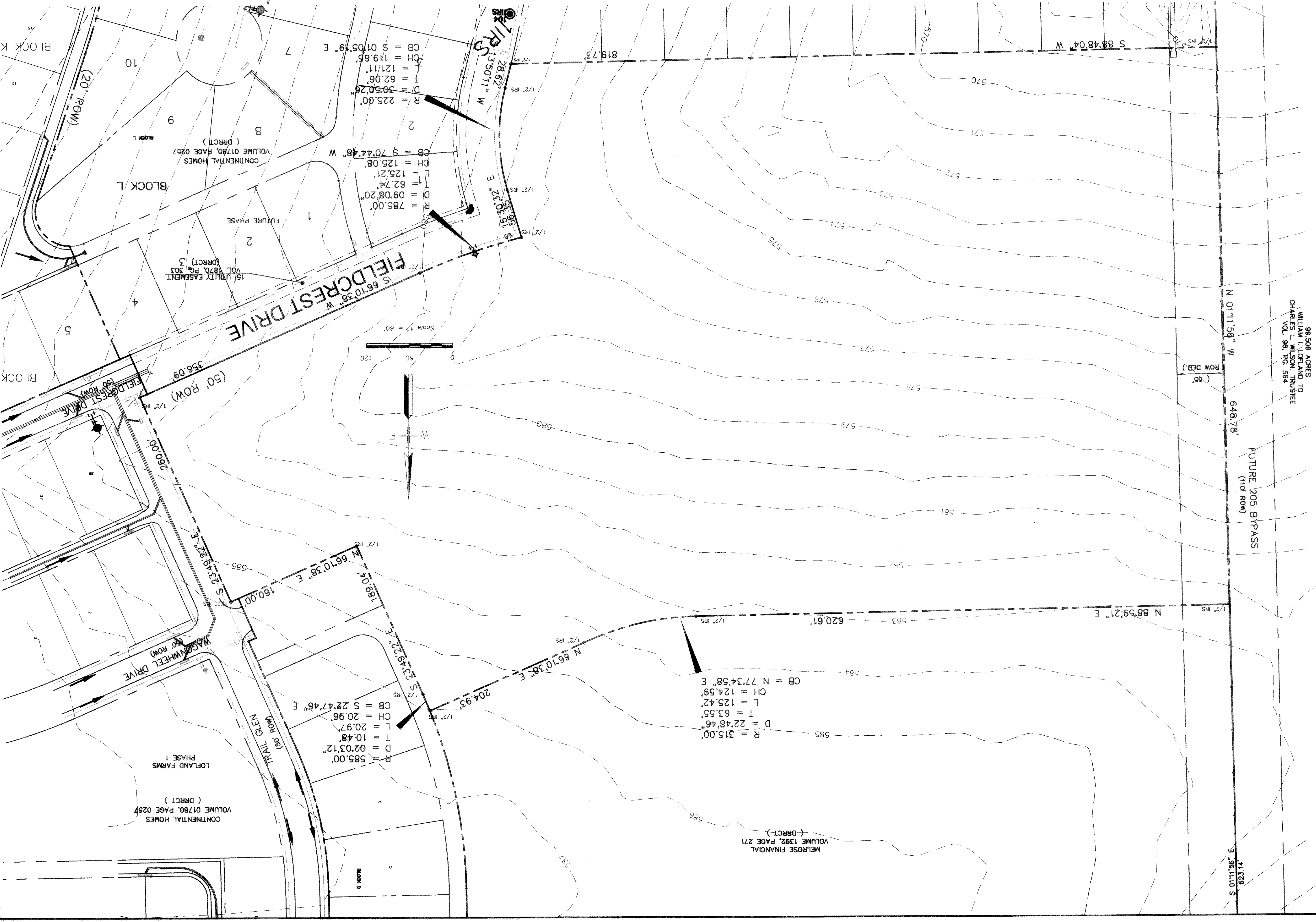
2.0

SHW Group Inc.
Architects + Engineers

FINAL PLANS FOR BIDDING
AND CONSTRUCTION

ROCKWALL ELEMENTARY #8
ROCKWALL INDEPENDENT SCHOOL DISTRICT
ROCKWALL, TEXAS

DATE: MAY 2, 2000
DRAWN BY: R. THOMMAN
CHECKED: TJC
COMM. NO.
REVISIONS



99.506 ACRES TO
WILLIAM L. LOFLAND TRUSTEE
CHARLES L. WILSON, TRUSTEE
VOL. 96, PG. 584

FUTURE 205 BYPASS
(110' ROW)

N 01°11'58" W 648.78'

ROW DEB.) (.55)

41378' E
681110' S

METROSE FINANCIAL
VOLUME 1392, PAGE 271
(DRCT)