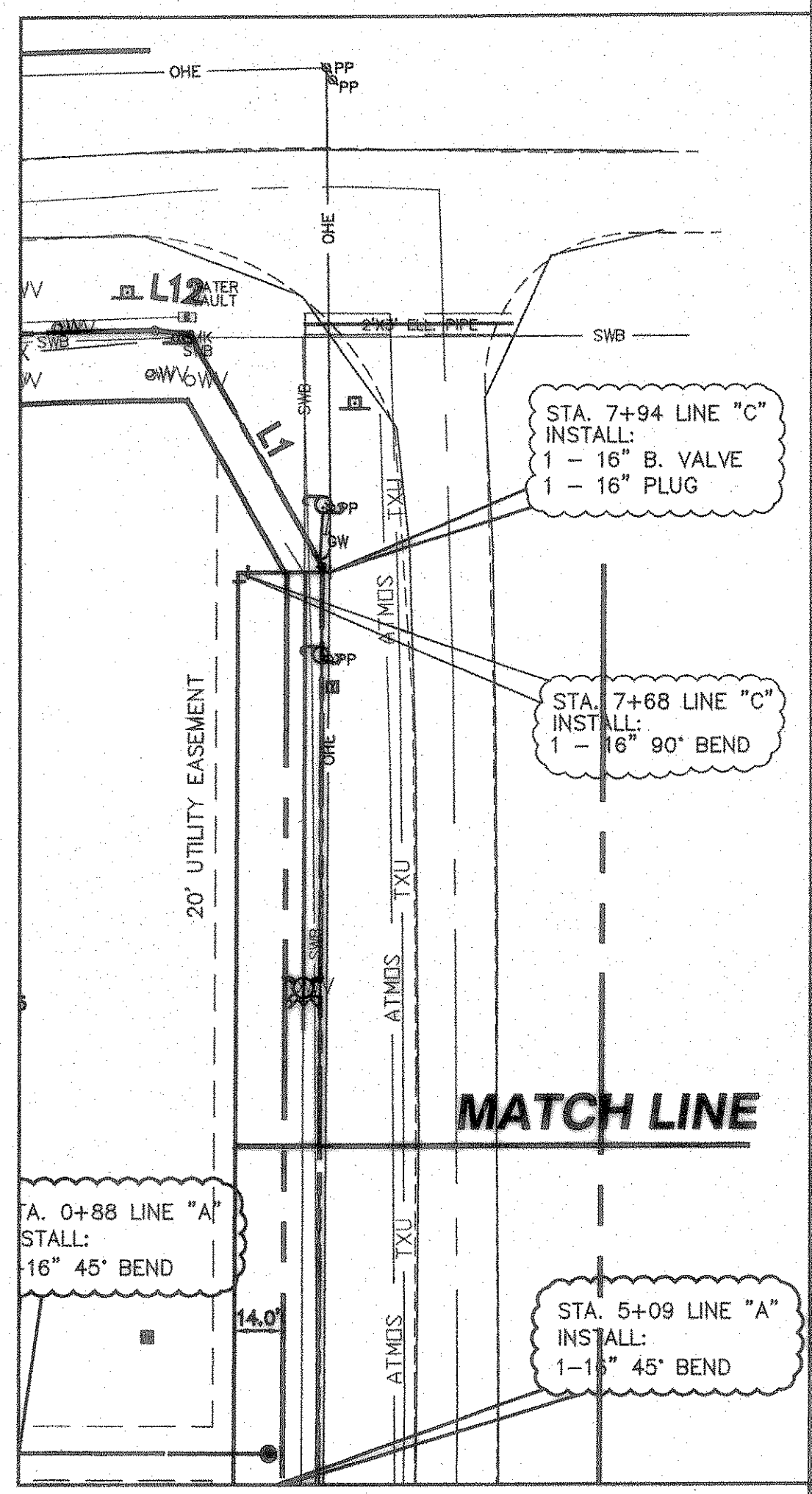


- WATER NOTES:**
1. WATER DISTRIBUTION SYSTEM MATERIAL AND CONSTRUCTION SHALL CONFORM TO THE CITY OF ROCKWALL STANDARDS.
 2. CONCRETE BLOCKING SHALL BE INSTALLED AT ALL BENDS, VALVES, AND FIRE HYDRANTS.
 3. ALL MAINS SHALL BE BURIED A MINIMUM DEPTH OF 48" BELOW TOP OF ADJACENT CURB OR AS DIRECTED BY THE ENGINEER.
 4. WATER PIPE SHALL BE PVC CLASS 200, PVC C-900 FOR SIZES UNDER 16" DIA. WATER PIPE SHALL BE PVC CLASS 230 PVC C-905 FOR SIZES 16" AND OVER IN DIA.
 5. CONTRACTOR SHALL NOTIFY ALL UTILITY COMPANIES PRIOR TO COMMENCING CONSTRUCTION. DAMAGE TO EXISTING UTILITIES SHALL BE REPAIRED AT CONTRACTOR'S EXPENSE.
 6. ALL FIRE HYDRANTS SHALL CONFORM TO THE REQUIREMENTS OF THE CITY OF ROCKWALL. CONTRACTOR SHALL NOTIFY ROCKWALL FIRE DEPARTMENT PRIOR TO PLACING OF PIPE TO ARRANGE FOR REQUIRED INSPECTIONS.
 7. CONTRACTOR TO VERIFY LOCATION OF ALL EXISTING WATER VALVES PRIOR CONNECTION TO EXISTING WATER SYSTEM.
 8. INSTALL BLUE 3M EMS DISKS AT ALL TEES, BENDS, VALVES AND SERVICES ON WATER LINES. REFERENCE VALVE INSTALLATION DETAIL.
 9. ALL FIRE HYDRANTS SHALL HAVE A MINIMUM OF 5' CLEARANCE AROUND.
 10. ALL 16" VALVES SHALL BE BUTTERFLY VALVES.
 11. ALL WORK SHALL CONFORM TO THE CITY OF ROCKWALL SPECIFICATIONS, STANDARDS AND DETAILS.



- BENCH MARKS:**
- BENCHMARK 1:** USGS MONUMENT - STAMPED BOREN 1986
 LOCATED APPROXIMATELY 1.25 MILES EAST OF ROCKWALL AT THE ROCKWALL MUNICIPAL AIRPORT, IN THE NORTH END OF A CIRCULAR GRASS AREA AT THE END OF A TAXIWAY.
 ELEVATION = 573.94
- BENCHMARK 2:** USGS MONUMENT - 5" CAP STAMPED N 1495/1986
 LOCATED 24.8 FEET WEST OF THE CENTER OF A PAVED ROAD LEADING TO THE ROCKWALL MUNICIPAL AIRPORT, 16.4 FEET SOUTH OF A UTILITY POLE WITH A TRANSFORMER AND LIGHT, 2 FEET WEST OF THE NORTH LEG OF A SIGN. ACCESS TO DATUM POINT IS THROUGH A 6 INCH LOGO CAP.
 ELEVATION = 566.70

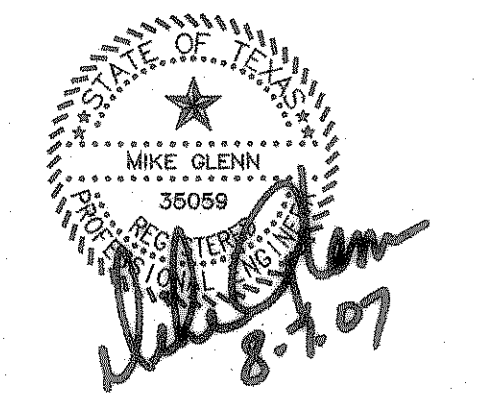
RECORD DRAWING
 This is to certify that changes and corrections have been made to conform to the contractor's record of this project.
 Signed: *[Signature]* Date: 8-7-07
 Glenn Engineering Corporation

WATER PLAN
 SCALE: 1" = 40'

GLENN ENGINEERING
 PHONE 972-707-5181 FAX 972-707-2076
 108 DECKER COURT - SUITE 910 IRVING, TEXAS 75062

- Consultants:**
- CIVIL: GLENN ENGINEERING CORP
 - STRUCTURAL: SHW GROUP, LLP
 - MEP: ESTES MCLURE AND ASSOCIATES.
 - FOOD SERVICE: H. G. RICE Inc.
 - LANDSCAPING: GRUBBS RAMSEY

FINAL PLANS FOR BIDDING AND CONSTRUCTING



Rockwall Independent School District

ROCKWALL ELEMENTARY SCHOOL #11
 RISD, TEXAS

Project Number: 1441.05.021
 Drawing Date: 3/09/2006
 Drawn: R.HOWMAN
 Checked: RAH
 Scale: AS SHOWN
 ACAD File: BUSIEK-ENG-SITE2_CITYREV3.dwg
 © 2006 SHW Group, LLP

- Revisions:**
- 1 07/20/2006 CITY COMMENTS
 - 2 08/15/2006 CITY COMMENTS
 - 3 10/17/2006 REVISED BOX ELEVATIONS
 - 4 10/23/2006 WATER REVISIONS

Sheet Title:
WATER PLAN

CU 1.01

Aug 07, 2007 - 3:27pm User: Rick
 \\Roberthp\C-DRIVE\ROCKISD\DALTON RANCH BUSIEK ELEM\FINAL SET\BUSIEK-ENG-SITE2_CITYREV3.dwg