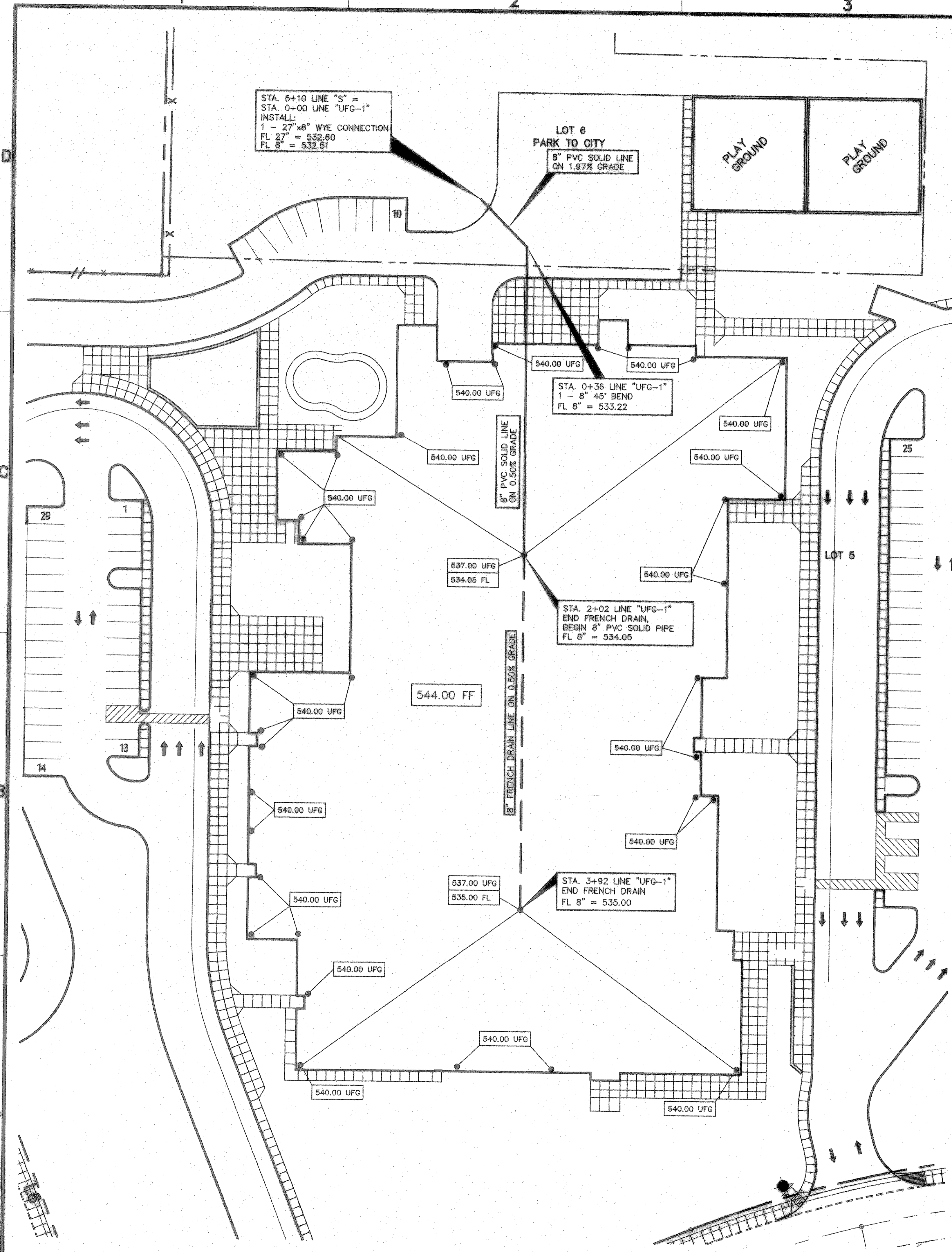
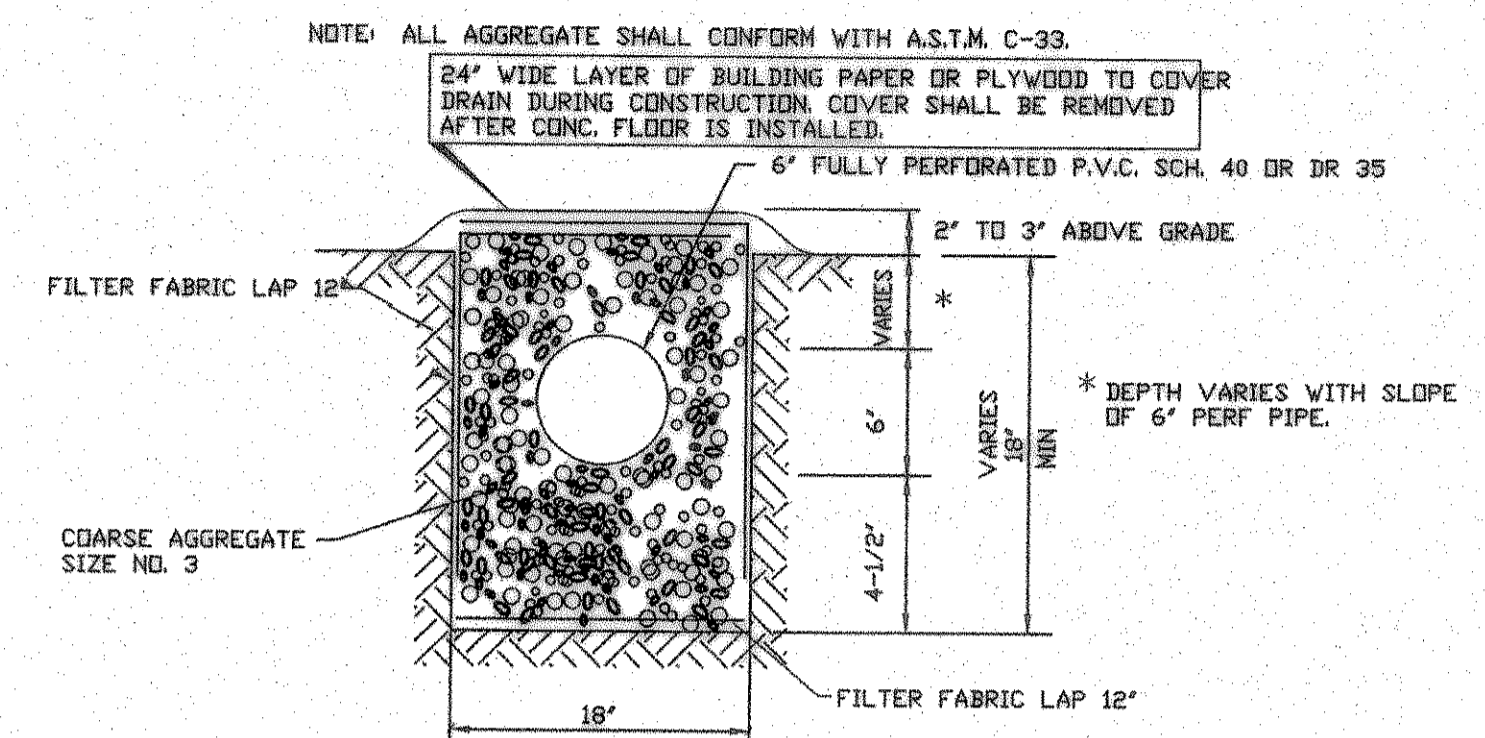
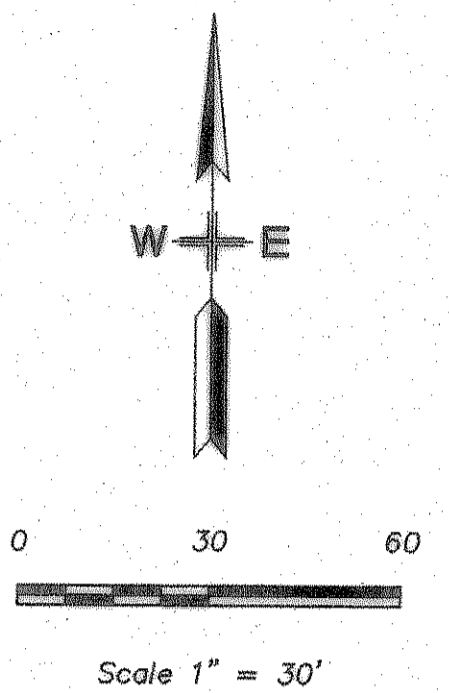


Aug 07, 2007 - 3:21pm User: Rick
 \\Robert\C-DRIVE\ROCKISD\DALTON RANCH BUSIEK ELEM\FINAL SET\BUSIEK-ENG-SITE2_CITYREV3.dwg

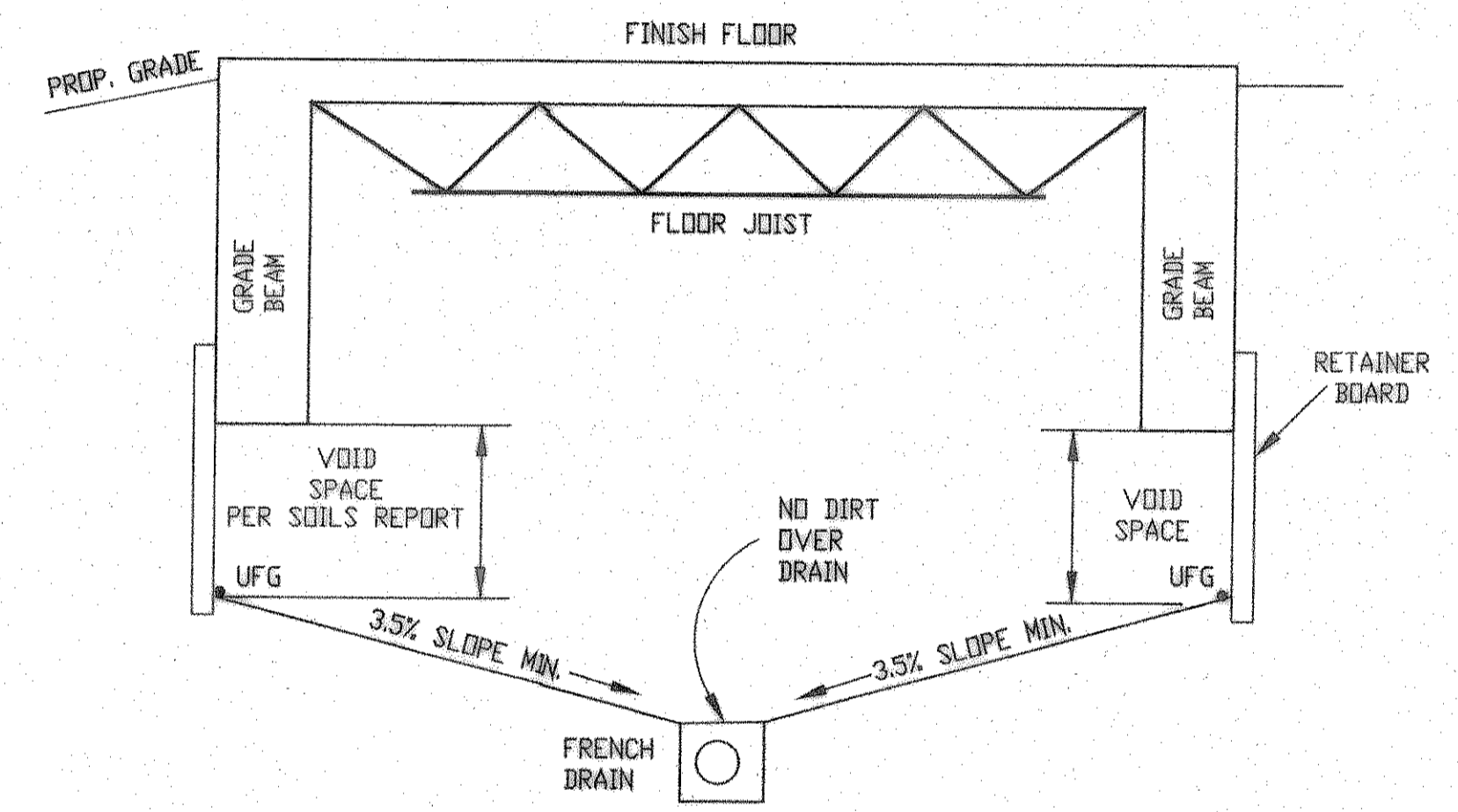


CONTRACTOR SHALL VERIFY ALL EXISTING INVERTS AND ELEVATIONS PRIOR TO CONSTRUCTION.

ALL STORM SEWER CONSTRUCTION TO BE PER CITY OF ROCKWALL STANDARDS.



DETAIL
TYPE 1 FRENCH DRAIN



UNDER FLOOR GRADING DETAIL

- GENERAL STORM SEWER NOTES
1. ALL CONSTRUCTION TO BE IN ACCORDANCE WITH THESE PLANS AND CITY OF ROCKWALL STANDARDS AND SPECIFICATIONS.
 2. PRIOR TO STARTING CONSTRUCTION, THE CONTRACTOR SHALL MAKE CERTAIN THAT ALL REQUIRED PERMITS AND APPROVALS HAVE BEEN OBTAINED. NO CONSTRUCTION OR FABRICATION SHALL BEGIN UNTIL THE CONTRACTOR HAS RECEIVED AND THOROUGHLY REVIEWED ALL PLANS AND OTHER DOCUMENTS APPROVED BY ALL OF THE PERMITTING AUTHORITIES.
 3. ALL WORK SHALL BE PERFORMED IN ACCORDANCE WITH THESE PLANS AND SPECIFICATIONS AND THE REQUIREMENTS AND STANDARDS OF THE LOCAL GOVERNING AUTHORITY.
 4. IN THE EVENT AN ITEM IS NOT COVERED IN THE CITY OF ROCKWALL SPECIFICATIONS, THE ENGINEER'S DECISION SHALL APPLY.
 5. BARRICADING, TRAFFIC CONTROL, AND PROJECT SIGNS SHALL CONFORM TO "STATE DEPARTMENT OF HIGHWAYS AND PUBLIC TRANSPORTATION BARRICADING AND CONSTRUCTION STANDARDS".
 6. THE GENERAL CONTRACTOR AND ALL SUB-CONTRACTORS SHALL VERIFY THE SUITABILITY OF ALL EXISTING AND PROPOSED SITE CONDITIONS INCLUDING GRADES AND DIMENSIONS BEFORE COMMENCEMENT OF ANY CONSTRUCTION. IN THE EVENT OF ANY CONFLICT AND PRIOR TO COMMENCEMENT OF ANY CONSTRUCTION, IMMEDIATELY NOTIFY THE ENGINEER. MINOR ADJUSTMENTS OF FINISH GRADE TO ACCOMPLISH SPOT DRAINAGE ARE ACCEPTABLE, IF NECESSARY, UPON PRIOR APPROVAL OF ENGINEER. PAVING INSTALLED SHALL "FLUSH OUT" AT ANY JUNCTURE WITH EXISTING PAVING.
 7. THE LOCATIONS OF UNDERGROUND UTILITIES SHOWN ON THIS PLAN ARE BASED ON FIELD SURVEYS AND LOCAL UTILITY COMPANY RECORDS. IT SHALL BE THE CONTRACTOR'S FULL RESPONSIBILITY TO CONTACT THE VARIOUS UTILITY COMPANIES TO LOCATE THEIR UTILITIES PRIOR TO STARTING CONSTRUCTION.
 8. CONTRACTOR SHALL VERIFY ALL EXISTING INVERTS AND RIM ELEVATIONS PRIOR TO CONSTRUCTION.
 9. ALL PVC PIPE SHALL BE SCH 40, ADS, HANCOX OR APPROVED EQUAL.
 10. ALL RCP SHALL BE CLASS III.

NOTE: PRIOR TO JOIST AND DECKING BEING SET IN PLACE ENGINEER MUST APPROVE UNDERFLOOR GRADING.

BENCH MARKS:

BENCHMARK 1: USGS MONUMENT - STAMPED BOREN 1986
 LOCATED APPROXIMATELY 1.25 MILES EAST OF ROCKWALL AT THE ROCKWALL MUNICIPAL AIRPORT, IN THE NORTH END OF A CIRCULAR GRASS AREA AT THE END OF A TAXIWAY.
 ELEVATION = 573.94

BENCHMARK 2: USGS MONUMENT - 5" CAP STAMPED IN 1495/1986
 LOCATED 24.6 FEET WEST OF THE CENTER OF A PAVED ROAD LEADING TO THE ROCKWALL MUNICIPAL AIRPORT, 18.4 FEET SOUTH OF A UTILITY POLE WITH A TRANSFORMER AND LIGHT, 2 FEET WEST OF THE NORTH LEG OF A SIGN. ACCESS TO DATUM POINT IS THROUGH A 5 INCH LOGG CAP.
 ELEVATION = 566.70

UNDERFLOOR GRADING PLAN
 SCALE: 1" = 30'

RECORD DRAWING

This is to certify that changes and corrections have been made to conform to the contractor's record of this project.

Signed: *[Signature]* Date: 8.7.07
 Glenn Engineering Corporation

GLENN ENGINEERING

PHONE 972-717-5151 FAX 972-717-2178
 105 DECKER COURT - SUITE 900 IRVING, TEXAS 75062

SHW Group LLP
 Architects + Engineers + Planners

Consultants:

CIVIL:
GLENN ENGINEERING CORP

STRUCTURAL:
SHW GROUP, LLP

MEP:
ESTES MCLURE AND ASSOCIATES.

FOOD SERVICE:
H. G. RICE Inc.

LANDSCAPING:
GRUBBS RAMSEY

FINAL PLANS FOR BIDDING AND CONSTRUCTING

STATE OF TEXAS
 MIKE GLENN
 38009
[Signature]
 8.7.07

Rockwall Independent School District

ROCKWALL ELEMENTARY SCHOOL #11
 RISD, TEXAS

Project Number: 1441.05.021
 Drawing Date: 3/09/2006
 Drawn: R.HOWMAN
 Checked: RAH
 Scale: AS SHOWN
 ACAD File: BUSIEK-ENG-SITE2_CITYREV3.dwg
 © 2006 SHW Group, LLP

Revisions:

1	07/20/2006	CITY COMMENTS
2	08/15/2006	CITY COMMENTS
3	10/17/2006	REVISED BOX ELEVATIONS
4	10/23/2006	WATER REVISIONS

Sheet Title:
UNDERFLOOR GRADING PLAN

CG 1.04