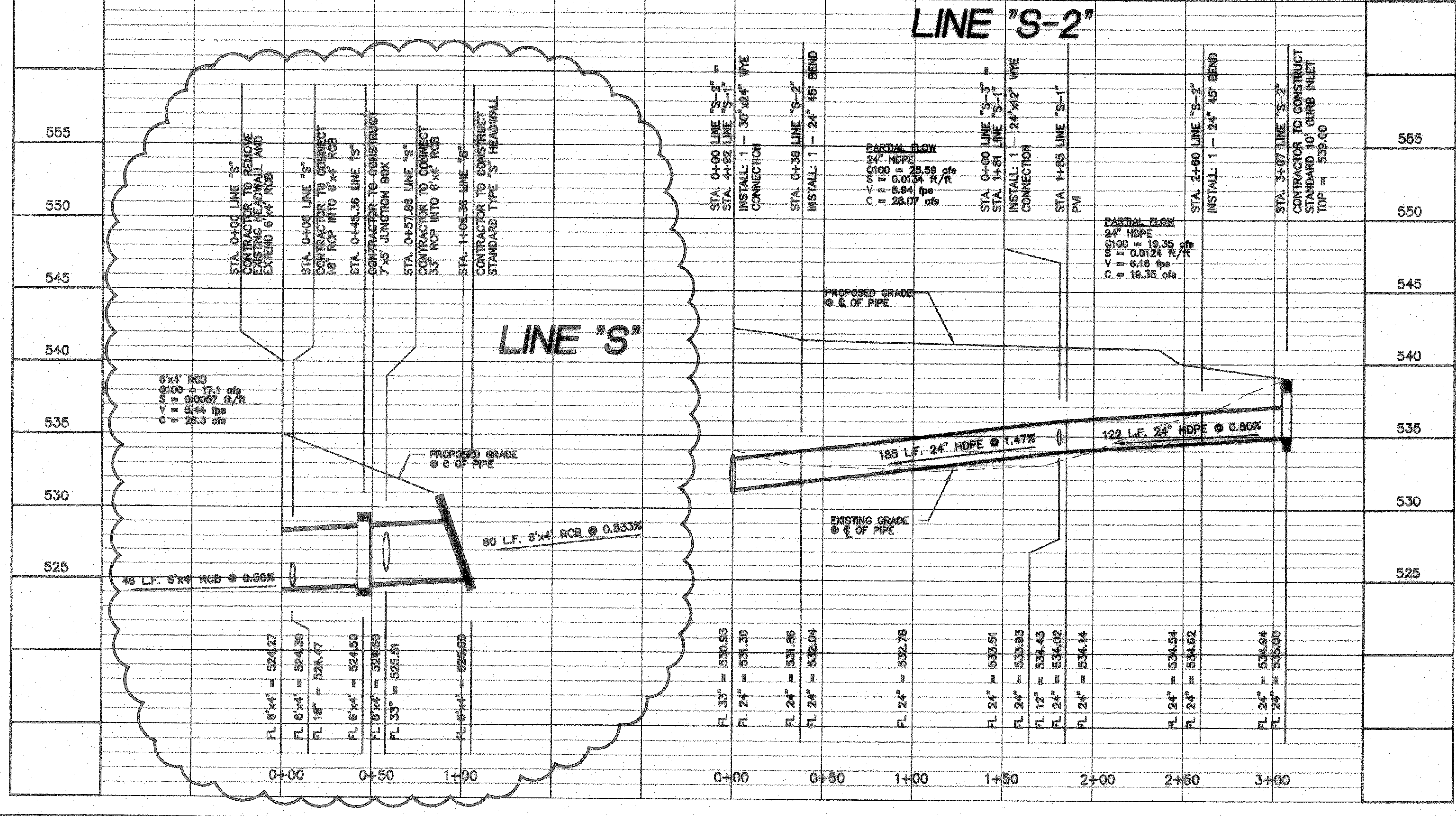
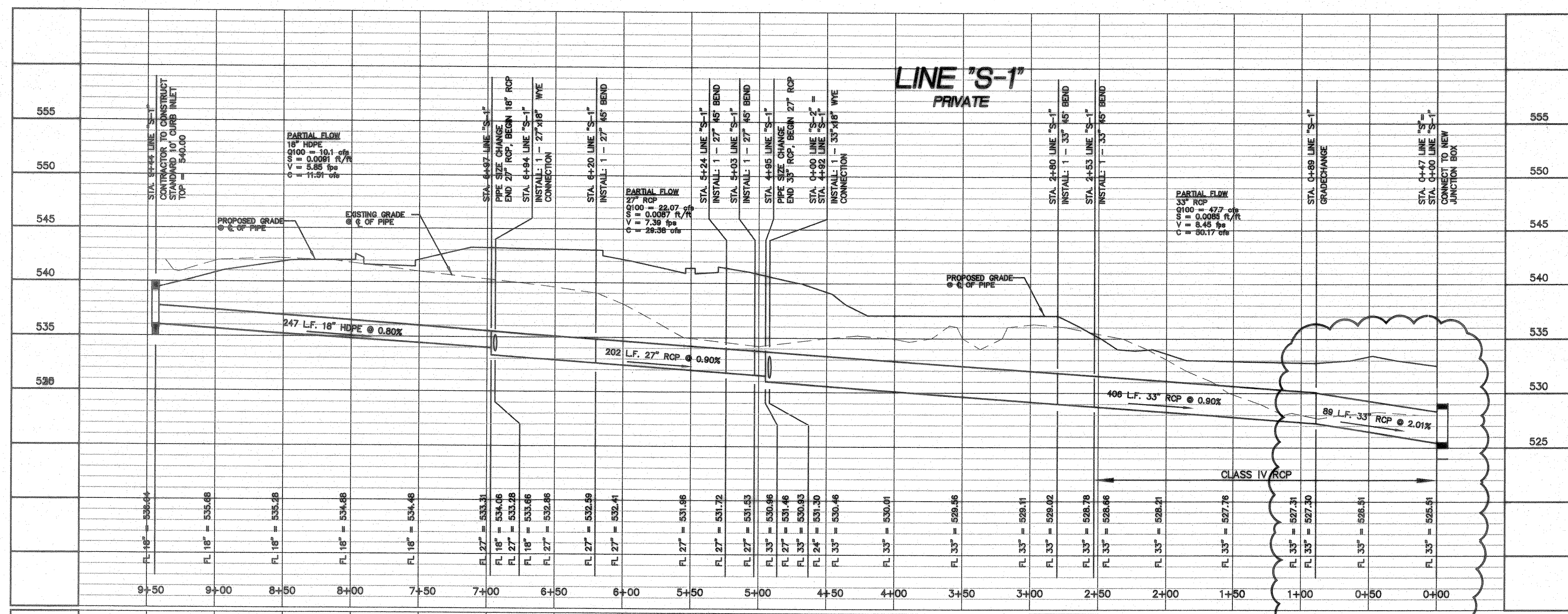
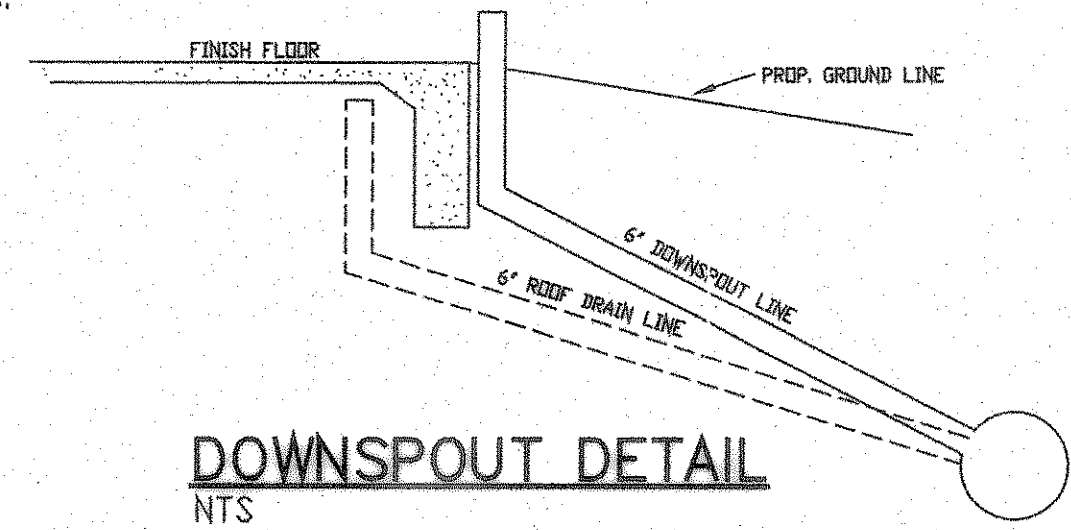


Aug 07, 2007 - 2:18pm User: Robert Howman
 \\Roberthp\c-drive\ROCKISD\DALTON RANCH BUSIEK ELEM\FINAL SET\BUSIEK-ENG-SITE2_CITYREV3.dwg



NOTE:
 1. AT ALL LOCATIONS OF DOWNSPOUTS AND ROOF DRAINS A 6" PVC PIPE IS TO BE INSTALLED FROM THE 12" PVC LINE TO THE FOUNDATION AND EXTEND UP ABOVE THE FINISH FLOOR ELEV. SEE ARCH. PLAN FOR THE CONNECTION DETAIL AND THE ROOF PLAN FOR ACTUAL DOWNSPOUT AND ROOF DRAIN LOCATIONS.



NOTE:
 SEE SHEET MEP PLANS FOR DOWNSPOUT & ROOF DRAIN LOCATIONS. ALL ROOF DRAINS, CANOPY'S AND DOWNSPOUTS SHALL BE CONNECTED TO STORM SEWER SYSTEM.

STORM SEWER PROFILES

SCALE: 1" = 40' H
 1" = 5' V

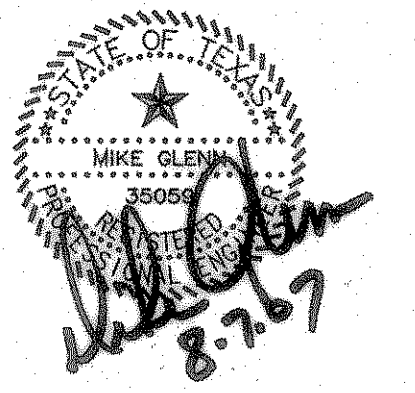
RECORD DRAWING
 This is to certify that changes and corrections have been made to conform with the contractor's record of this project.
 Signed: *[Signature]* 8-7-07 Date: 8-7-07
 Glenn Engineering Corporation

GLENN ENGINEERING
 PHONE 972-777-5551 FAX 972-777-2176
 105 DECKER COURT - SUITE 910 IRVING, TEXAS 75062

SHW Group LLP
 Architects + Engineers + Planners

Consultants:
 CIVIL: GLENN ENGINEERING CORP
 STRUCTURAL: SHW GROUP, LLP
 MEP: ESTES McCLURE AND ASSOCIATES.
 FOOD SERVICE: H. G. RICE Inc.
 LANDSCAPING: GRUBBS RAMSEY

FINAL PLANS FOR BIDDING AND CONSTRUCTING



Rockwall Independent School District

ROCKWALL ELEMENTARY SCHOOL #11
 RISSD, TEXAS

Project Number: 1441.05.021
 Drawing Date: 3/09/2006
 Drawn: R.HOWMAN
 Checked: RAH
 Scale: AS SHOWN
 ACAD File: BUSIEK-ENG-SITE2_CITYREV3.dwg
 © 2006 SHW Group, LLP

- Revisions:
- 07/20/2006 CITY COMMENTS
 - 08/15/2006 CITY COMMENTS
 - 10/17/2006 REVISED BOX ELEVATIONS
 - 10/23/2006 WATER REVISIONS

Sheet Title:
STORM SEWER PROFILES

CU 1.07