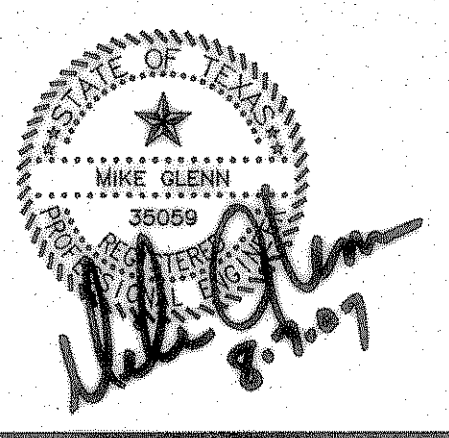


Aug 07, 2007 - 2:24pm User: Robert Howman
 \\Roberthp\c-drive\ROCKISD\DALTON RANCH BUSIEK ELEM\FINAL SET\BUSIEK-ENG-SITE2_CITYREV3.dwg

Consultants:
 CIVIL:
 GLENN ENGINEERING CORP
 STRUCTURAL:
 SHW GROUP, LLP
 MEP:
 ESTES McCLURE AND ASSOCIATES.
 FOOD SERVICE:
 H. G. RICE Inc.
 LANDSCAPING:
 GRUBBS RAMSEY

FINAL PLANS FOR BIDDING AND CONSTRUCTING



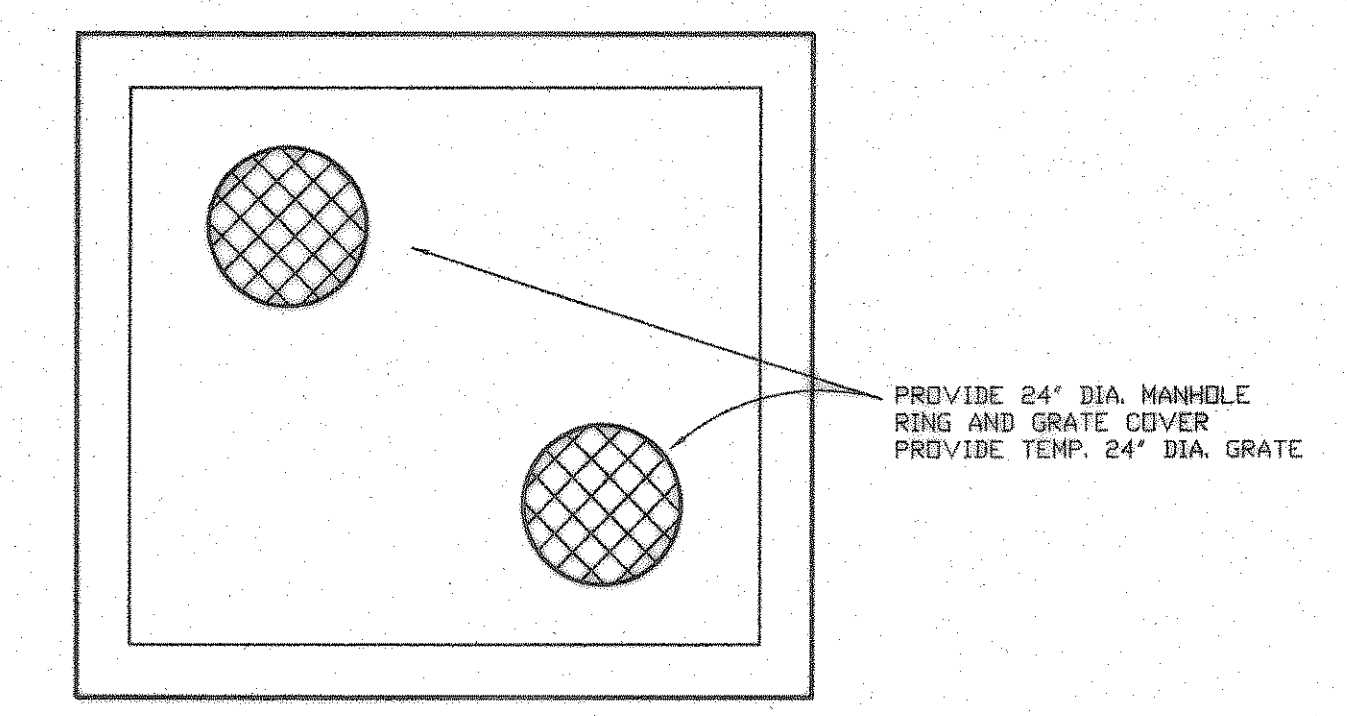
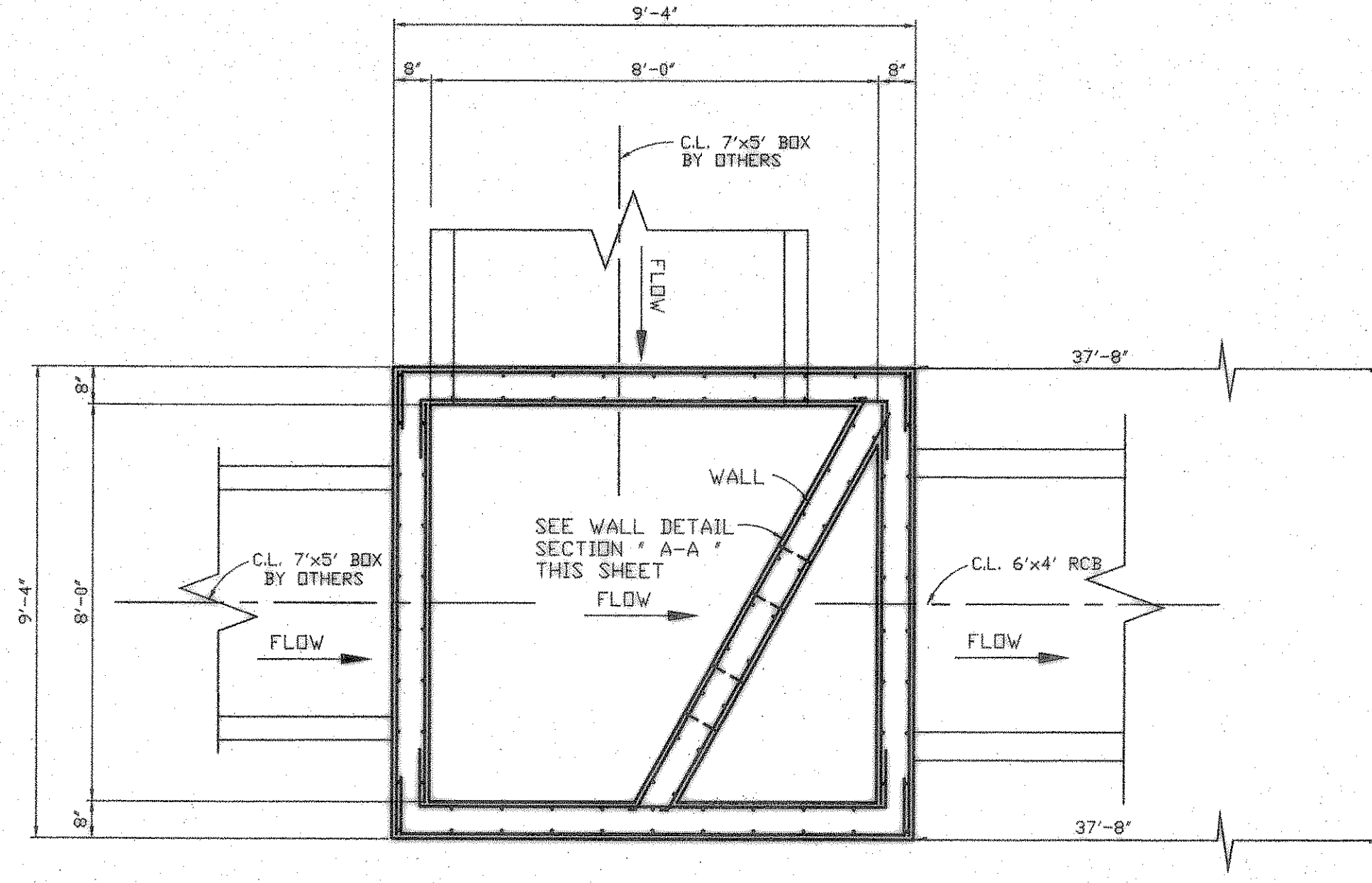
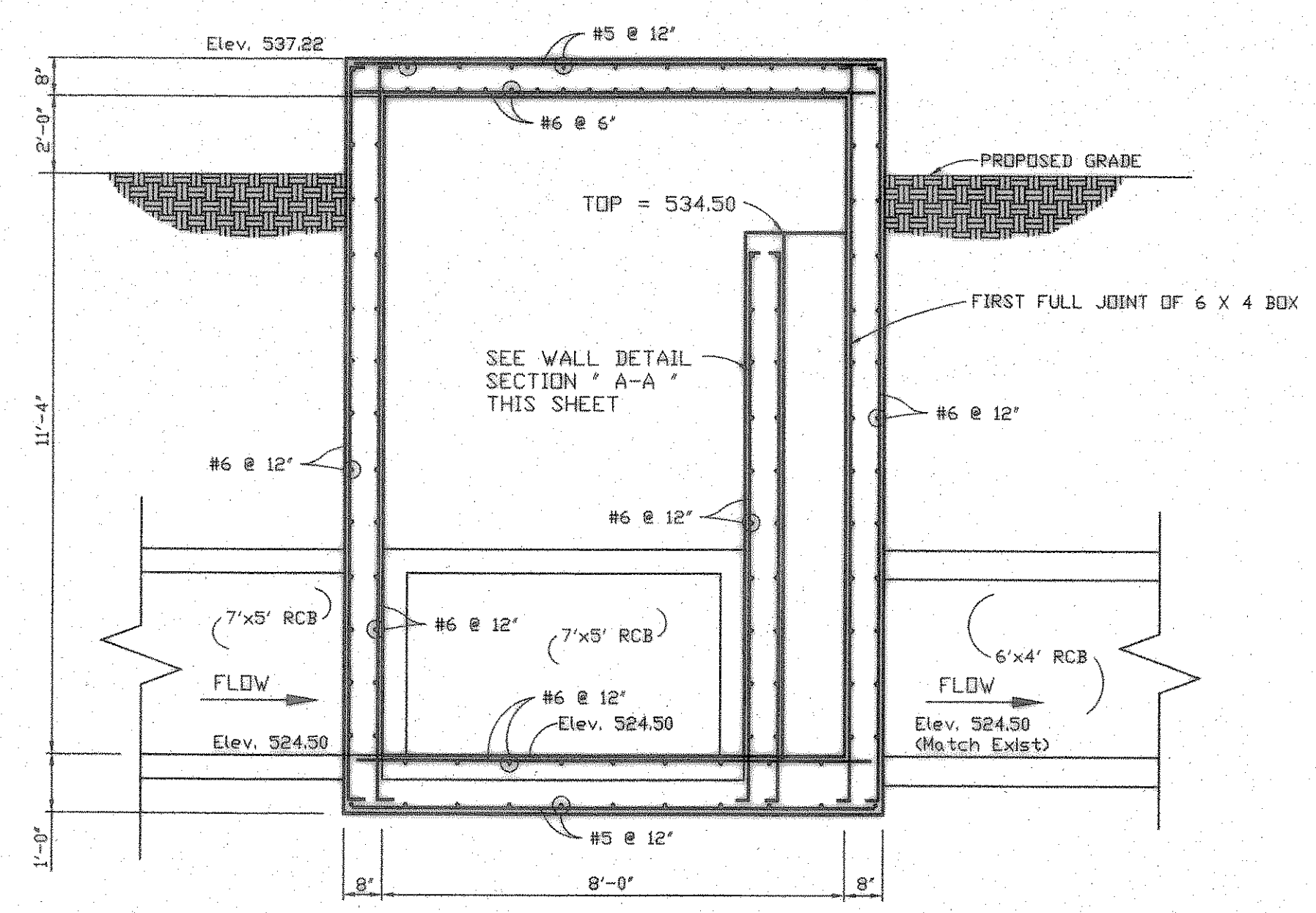
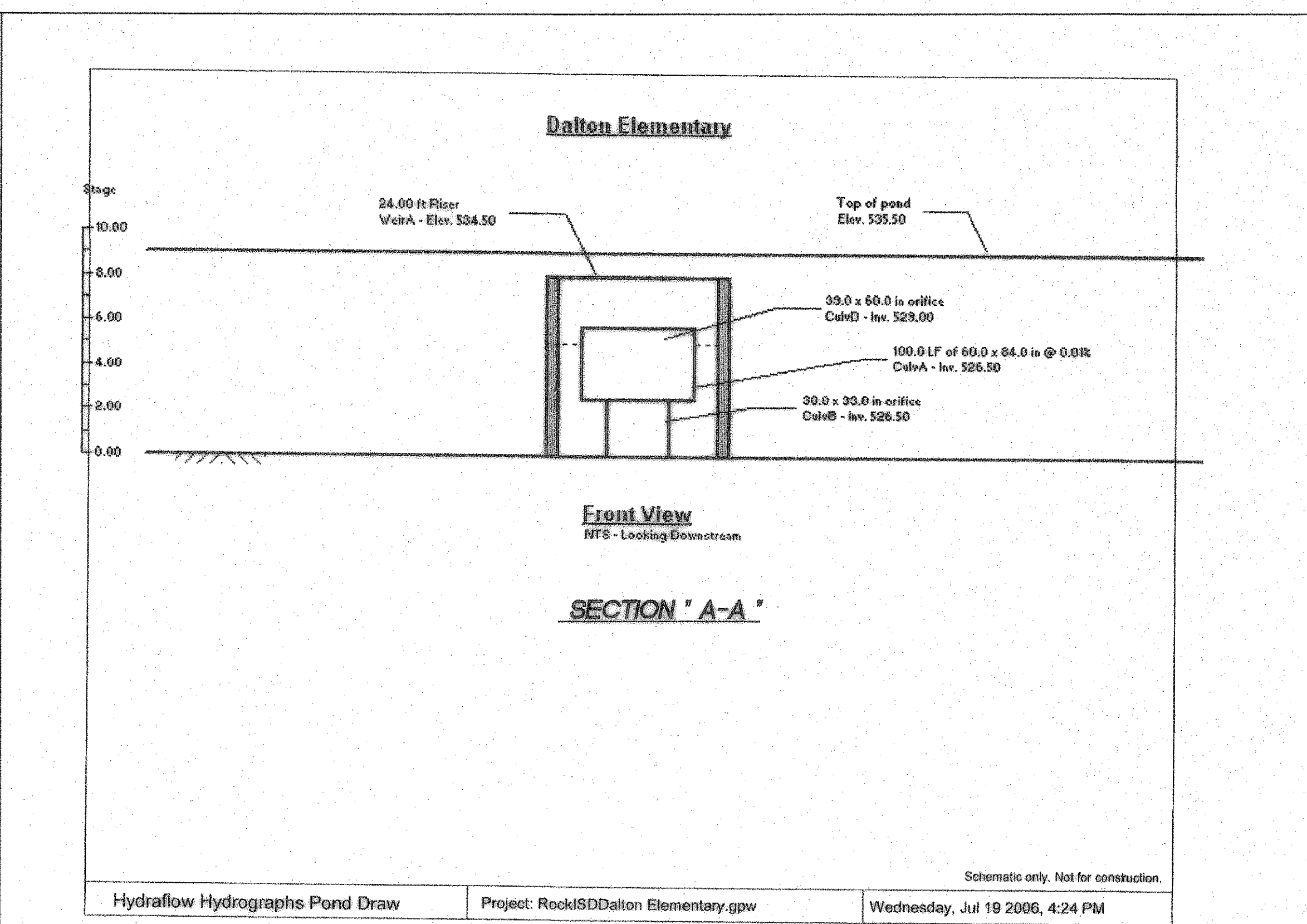
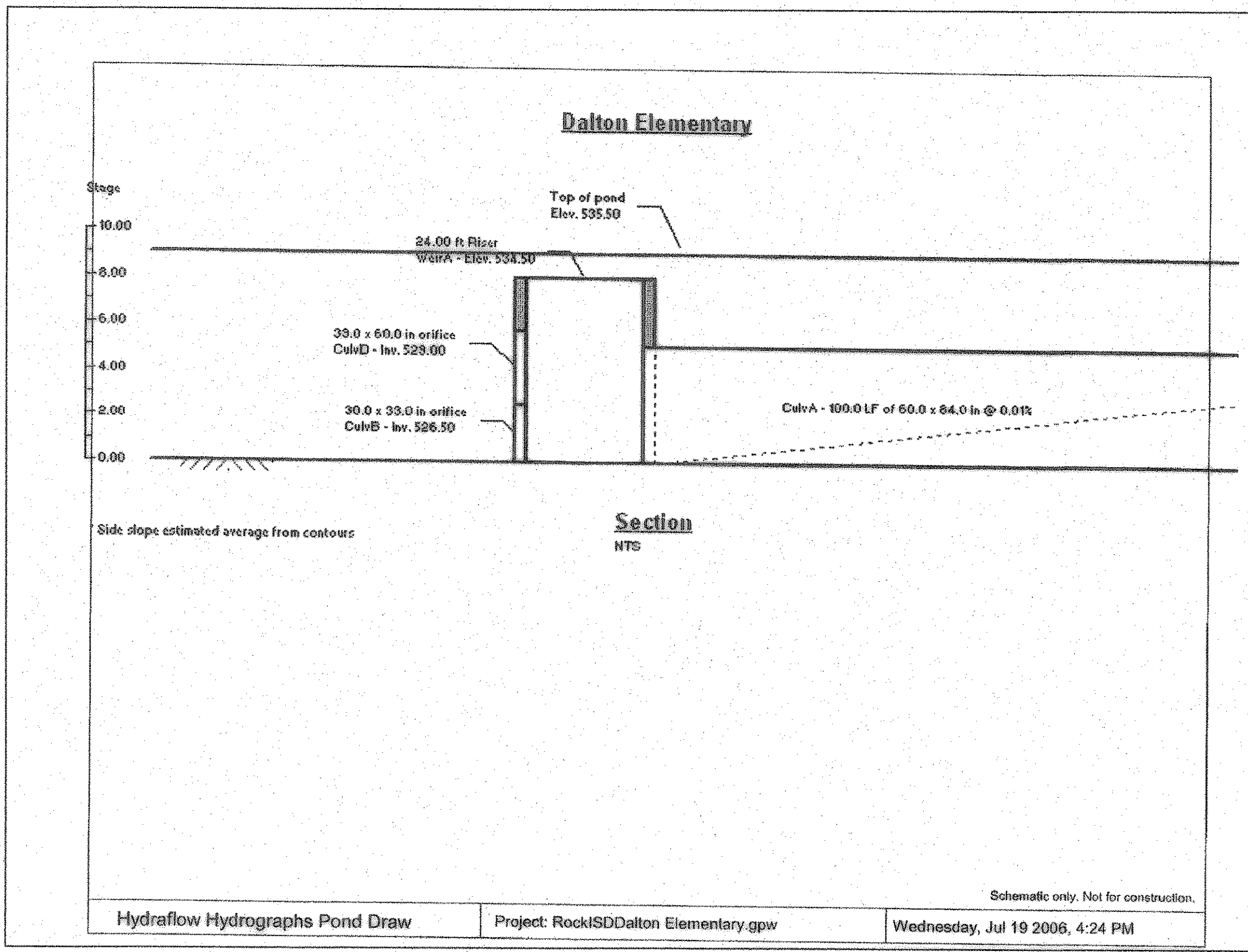
Rockwall Independent School District

ROCKWALL ELEMENTARY SCHOOL #11
 RISD, TEXAS

Project Number: 1441.05.021
 Drawing Date: 3/09/2006
 Drawn: R.HOWMAN
 Checked: RAH
 Scale: AS SHOWN
 ACAD File: BUSIEK-ENG-SITE2_CITYREV3.dwg
 © 2006 SHW Group, LLP

Revisions:	
1	07/20/2006 CITY COMMENTS
2	08/15/2006 CITY COMMENTS
3	10/17/2006 REVISED BOX ELEVATIONS
4	10/23/2006 WATER REVISIONS

Sheet Title:
STORM SEWER JUNCTION BOX DETAILS



STORM SEWER JUNCTION BOX DETAIL
 SCALE: AS SHOWN

RECORD DRAWING
 This is to certify that changes and corrections have been made to conform the contractor's record of this project.
 Signed: *[Signature]* Date: 8.7.07
 Glenn Engineering Corporation

GLENN ENGINEERING
 PHONE 972-777-5551 FAX 972-777-2270
 125 DECKER COURT - SUITE 910 IRVING, TEXAS 75062