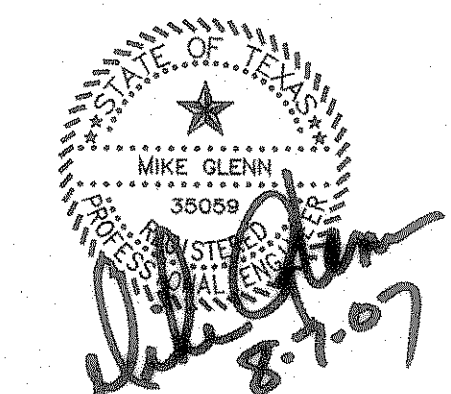


Consultants:  
 CIVIL:  
 GLENN ENGINEERING CORP  
 STRUCTURAL:  
 SHW GROUP, LLP  
 MEP:  
 ESTES McCCLURE AND ASSOCIATES.  
 FOOD SERVICE:  
 H. G. RICE Inc.  
 LANDSCAPING:  
 GRUBBS RAMSEY

FINAL PLANS FOR BIDDING AND CONSTRUCTING



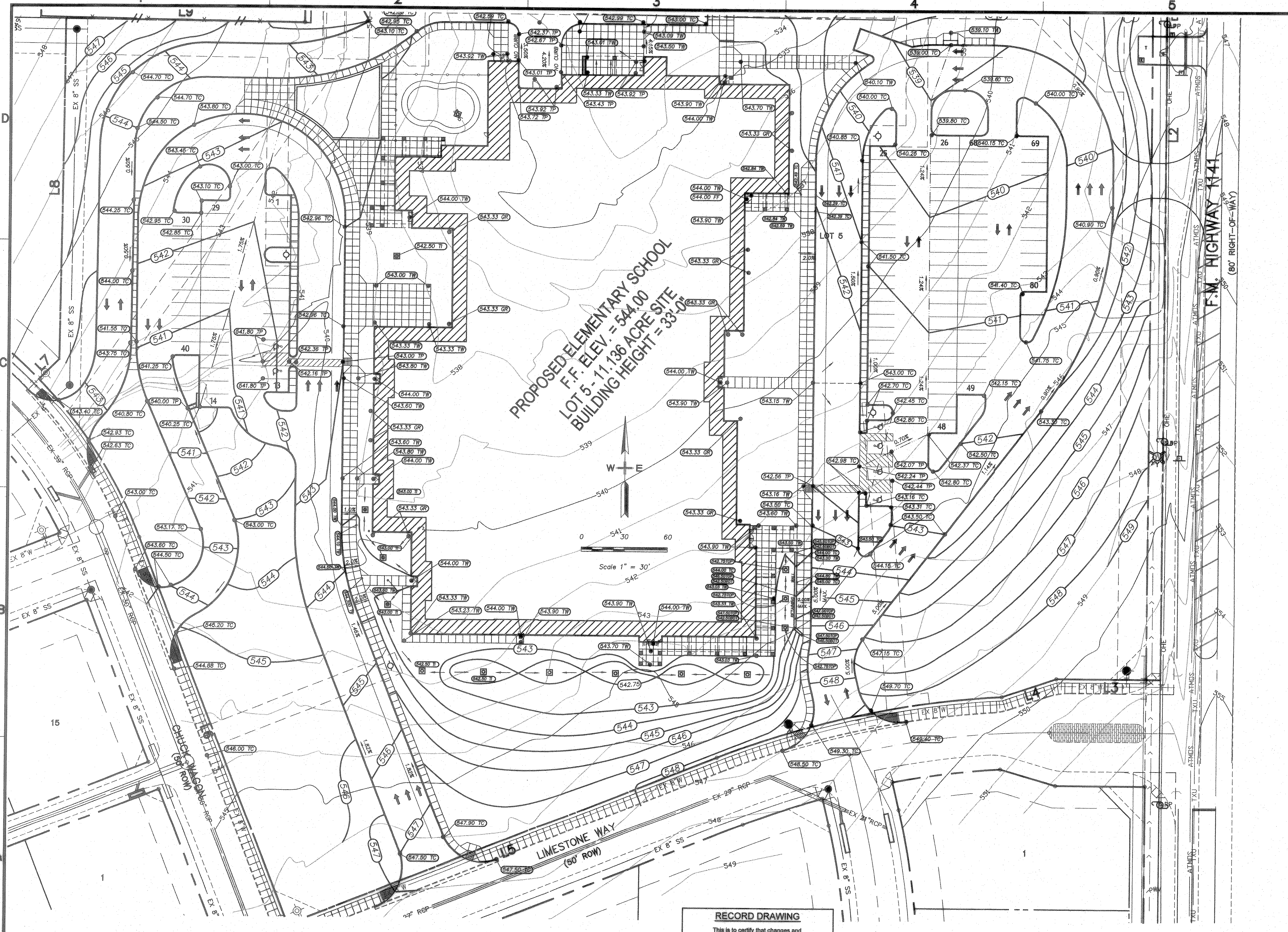
**Rockwall Independent School District**

**ROCKWALL ELEMENTARY SCHOOL #11**  
RISD, TEXAS

Project Number: 1441.05.021  
 Drawing Date: 3/09/2006  
 Drawn: R.HOWMAN  
 Checked: RAH  
 Scale: AS SHOWN  
 ACAD File: BUSIEK-ENG-SITE2\_CITYREV3.dwg  
 © 2006 SHW Group, LLP

Revisions:	
1	07/20/2006 CITY COMMENTS
2	08/15/2006 CITY COMMENTS
3	10/17/2006 REVISED BOX ELEVATIONS
4	10/23/2006 WATER REVISIONS

Sheet Title:  
**SOUTH GRADING PLAN**



**RECORD DRAWING**  
 This is to certify that changes and corrections have been made to conform the contractor's record of this project.  
 Signed: *[Signature]* Date: 8-7-07  
 Glenn Engineering Corporation

**SOUTH GRADING PLAN**  
SCALE: 1" = 30'

**GLENN ENGINEERING**  
 PHONE 972-707-8881 FAX 972-707-8789  
 105 DECKER COURT - SUITE 910 IRVING, TEXAS 75062

Aug 07, 2007 3:17pm User: Rick  
 \\Roberthp\C-DRIVE\ROCKISD\DALTON RANCH BUSIEK ELEM\FINAL SET\BUSIEK-ENG-SITE2\_CITYREV3.dwg