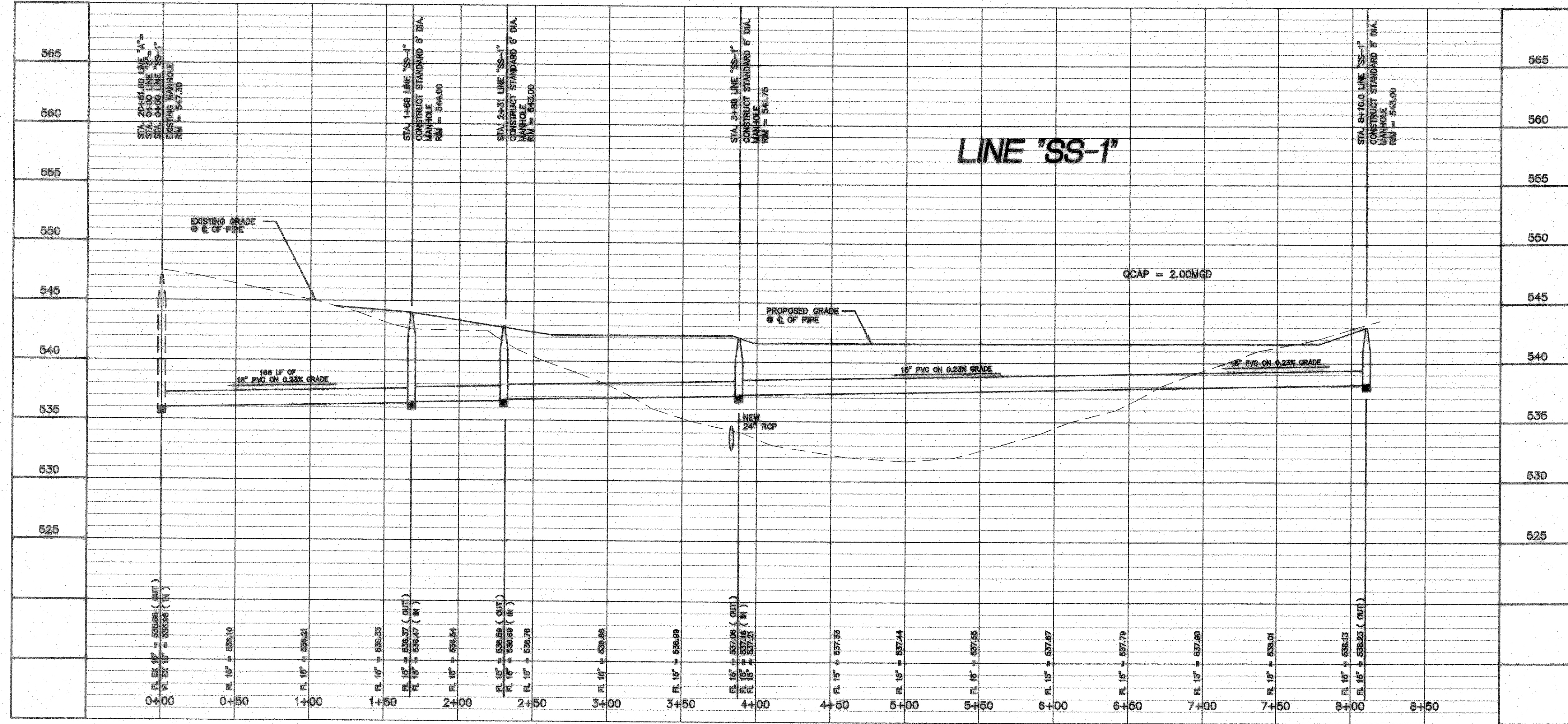
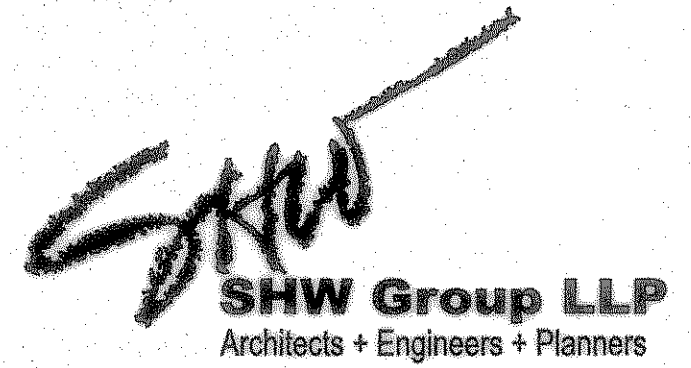
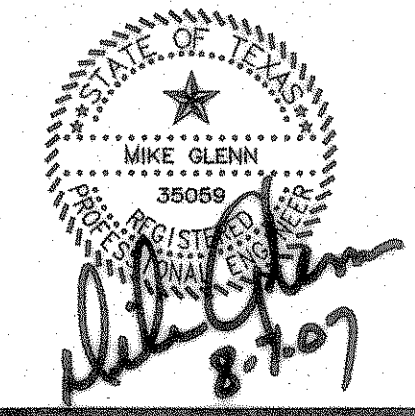


Aug 07, 2007 - 3:28pm User: Rick  
 \\Roberthp\C-DRIVE\ROCKISD\DALTON RANCH BUSIEK ELEM\FINAL SET\BUSIEK-ENG-SITE2\_CITYREV3.dwg



Consultants:  
 CIVIL:  
 GLENN ENGINEERING CORP  
 STRUCTURAL:  
 SHW GROUP, LLP  
 MEP:  
 ESTES McCLURE AND ASSOCIATES.  
 FOOD SERVICE:  
 H. G. RICE Inc.  
 LANDSCAPING:  
 GRUBBS RAMSEY

FINAL PLANS FOR BIDDING AND CONSTRUCTING



Rockwall Independent School District

ROCKWALL  
 ELEMENTARY  
 SCHOOL #11  
 RISD, TEXAS

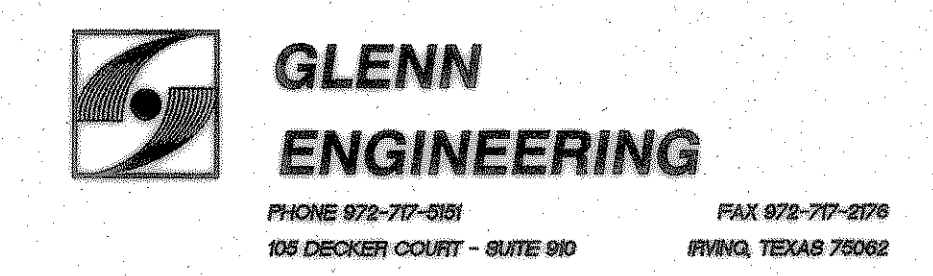
Project Number: 1441.05.021  
 Drawing Date: 3/09/2006  
 Drawn: R.HOWMAN  
 Checked: RAH  
 Scale: AS SHOWN  
 ACAD File: BUSIEK-ENG-SITE2\_CITYREV3.dwg  
 © 2006 SHW Group, LLP

Revisions:

|   |            |                        |
|---|------------|------------------------|
| 1 | 07/20/2006 | CITY COMMENTS          |
| 2 | 08/15/2006 | CITY COMMENTS          |
| 3 | 10/17/2006 | REVISED BOX ELEVATIONS |
| 4 | 10/23/2006 | WATER REVISIONS        |

**RECORD DRAWING**  
 This is to certify that changes and corrections have been made to conform to the contractor's record of this project.  
 Signed: *[Signature]* Date: 8-7-07  
 Glenn Engineering Corporation

**SANITARY SEWER PROFILE**  
 SCALE: 1" = 40' H  
 1" = 5' V



Sheet Title:  
**SANITARY SEWER PROFILE**

CU 1.03