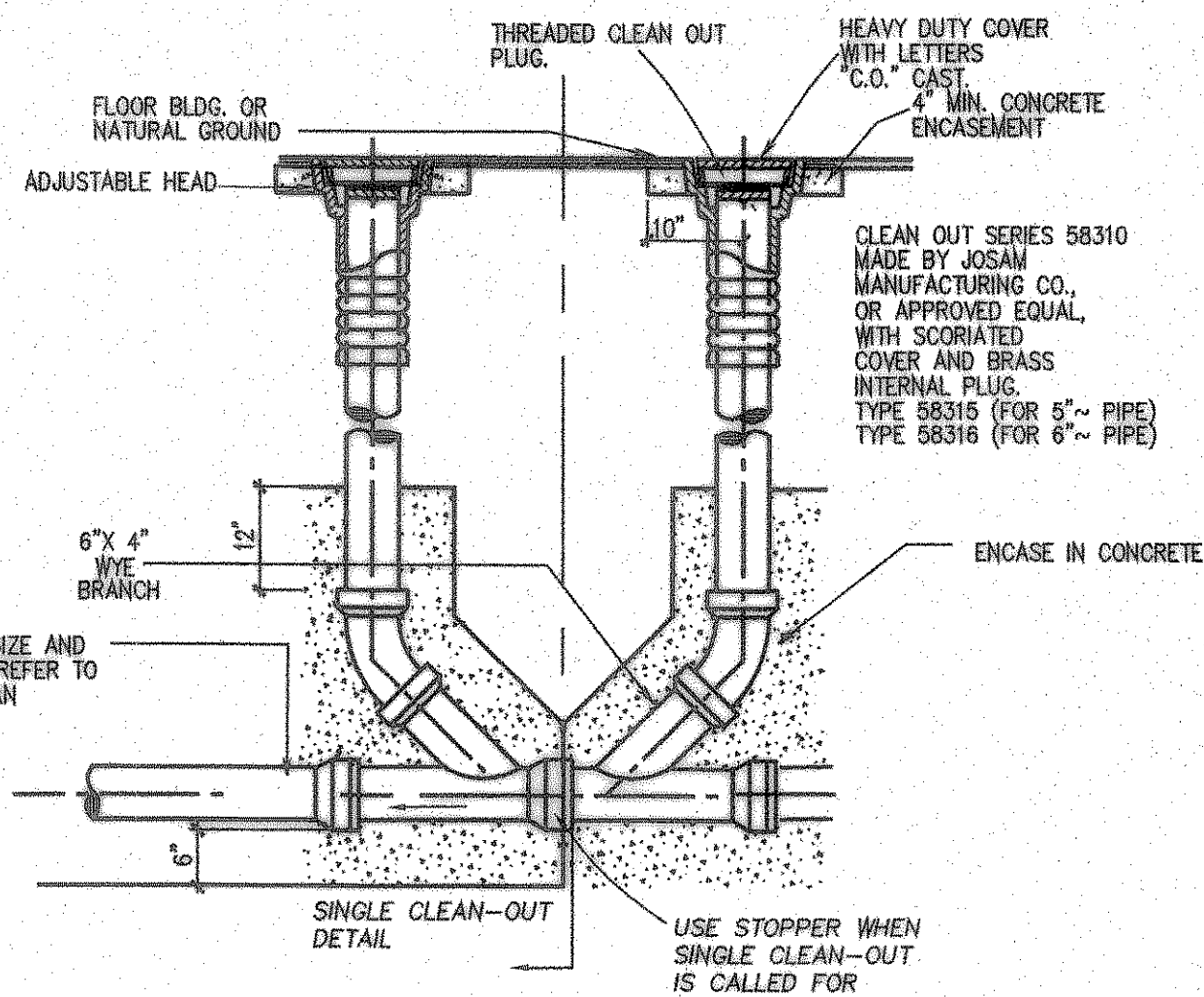


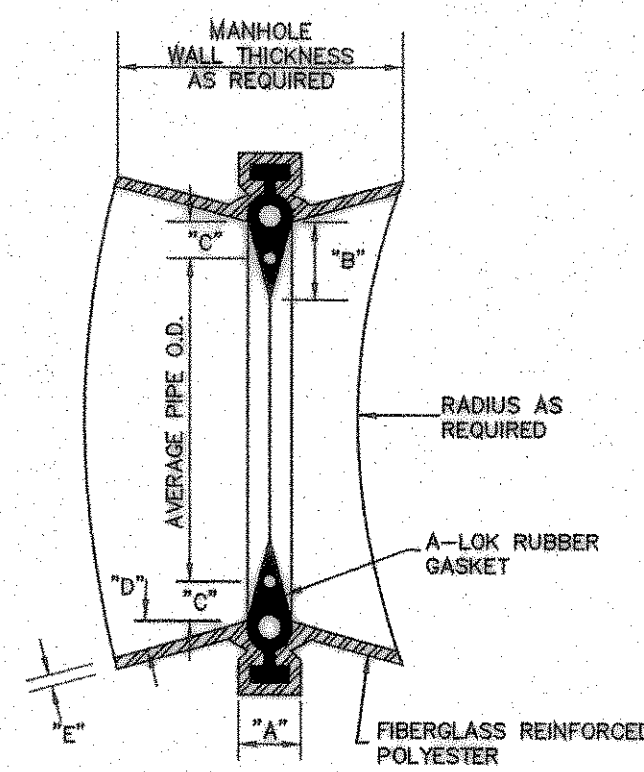
Aug 07, 2007 - 2:20pm User: Robert Howman \\Roberthp\c-drive\ROCKWALL\DALTON RANCH BUSIEK\ELM\FINAL SET\DETAILS\BUSIEK-Details-ALL.dwg



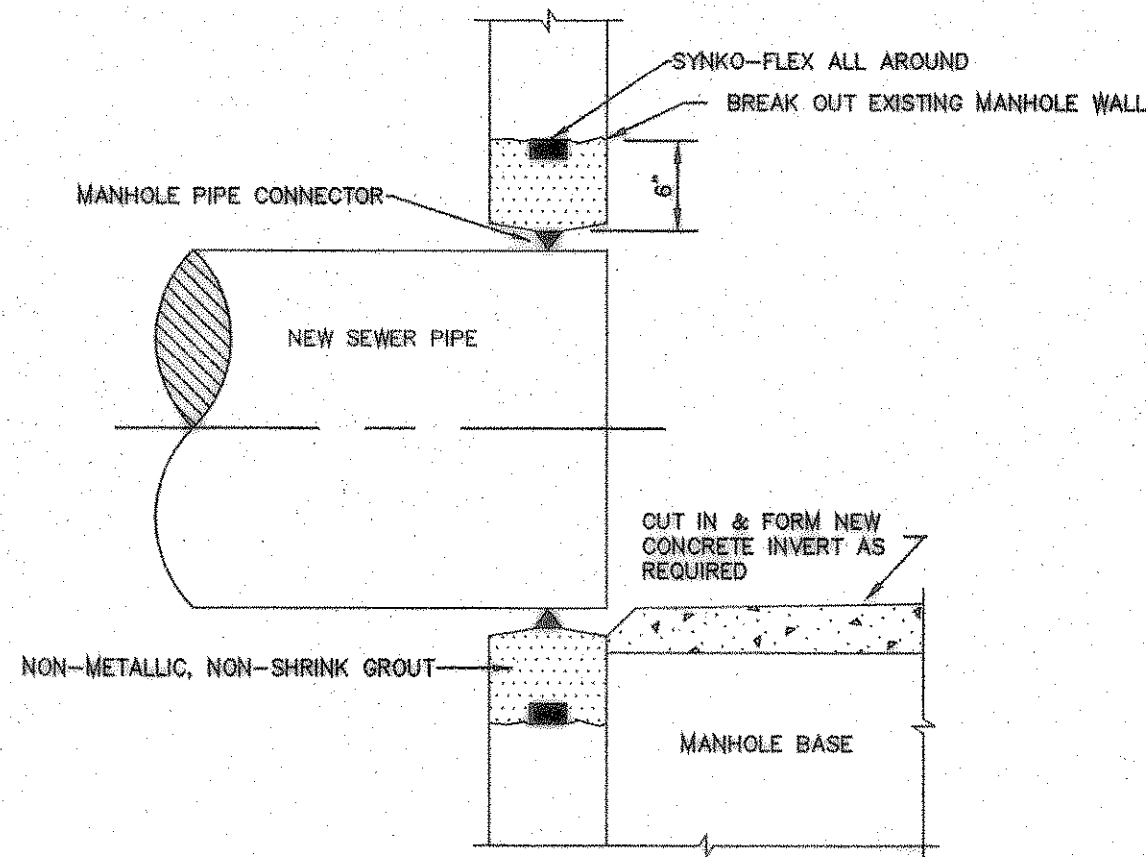
**SANITARY SEWER DOUBLE CLEAN-OUT**  
SINGLE/DOUBLE

DIMENSION FOR MANHOLE PIPE CONNECTOR A.S.T.M. C-923

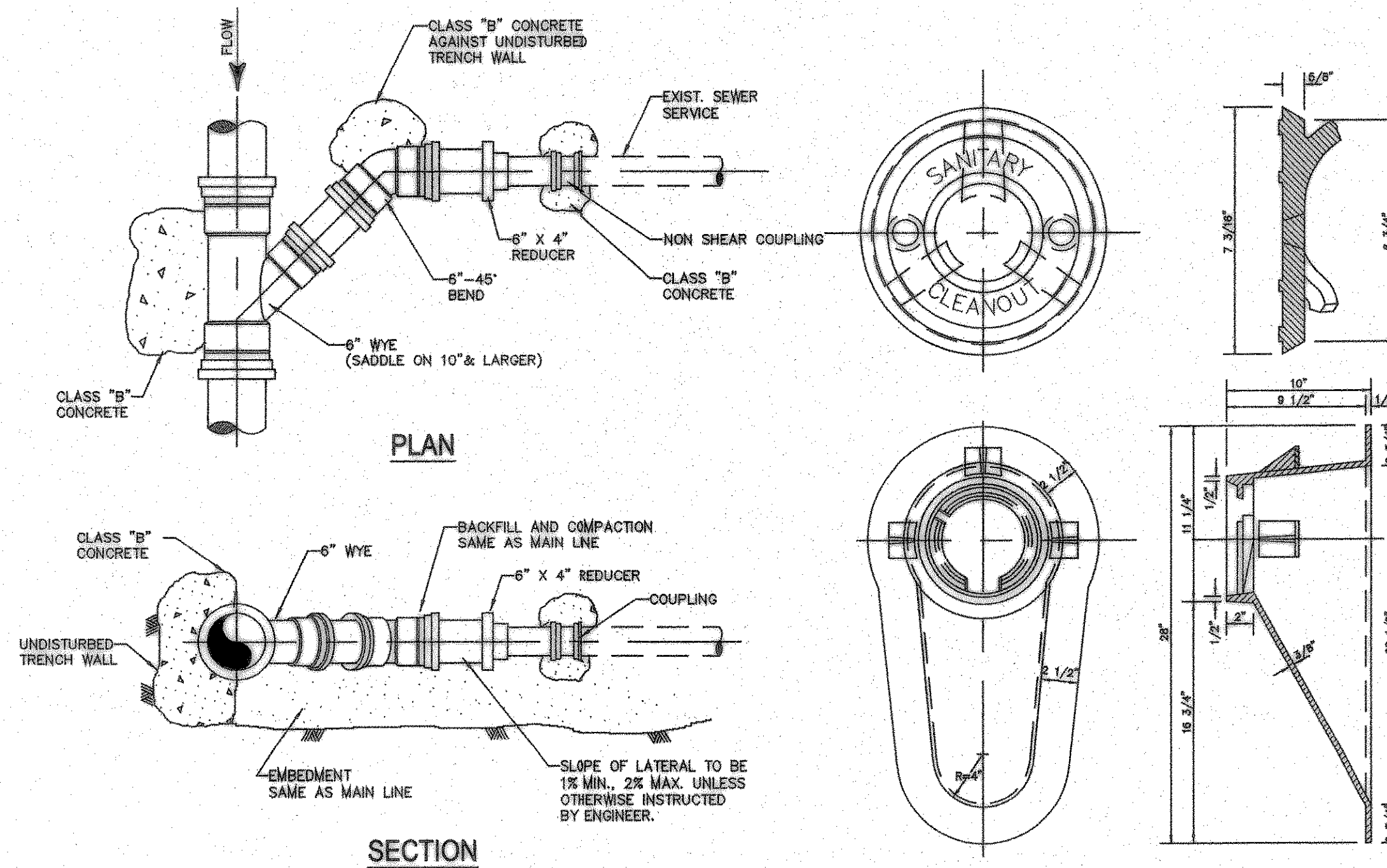
PIPE SIZE	A	B	C	D	E
4"-6"	1 1/2"	7/8"	3/8"	10"	0.10±
8"-24"	2 1/8"	1 3/8"	5/8"	10"	0.10±
24"-60"	2 3/8"	1 3/4"	3/4"	10"	0.25±



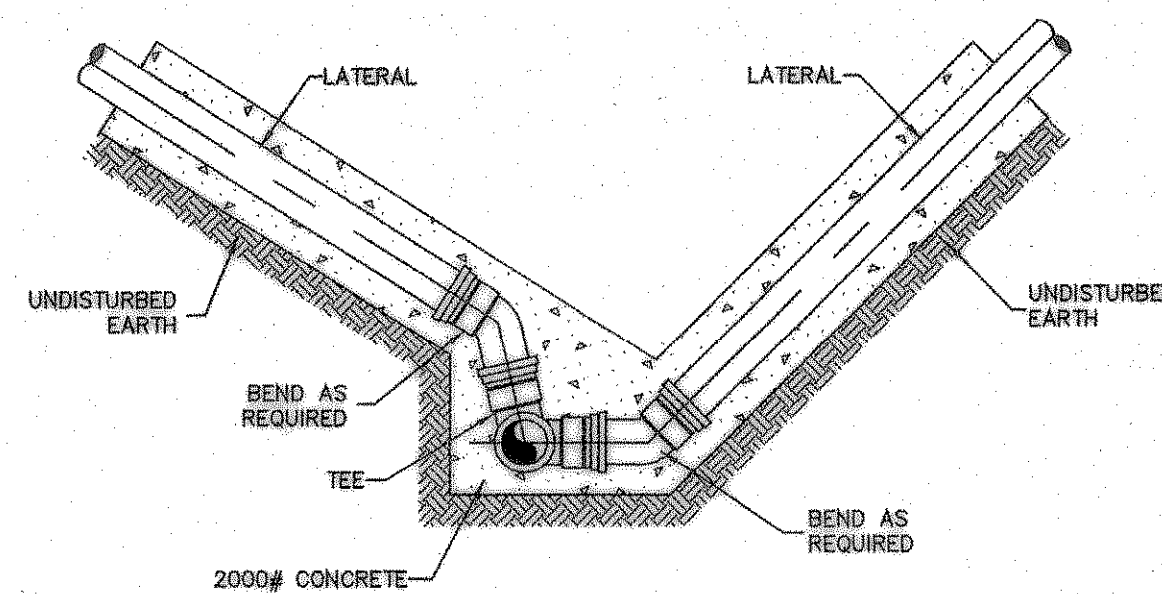
**MANHOLE PIPE CONNECTOR**  
(FOR ALL CAST-IN-PLACE MANHOLES)



**PIPE CONNECTION TO EXISTING MANHOLE AND JUNCTION BOX**

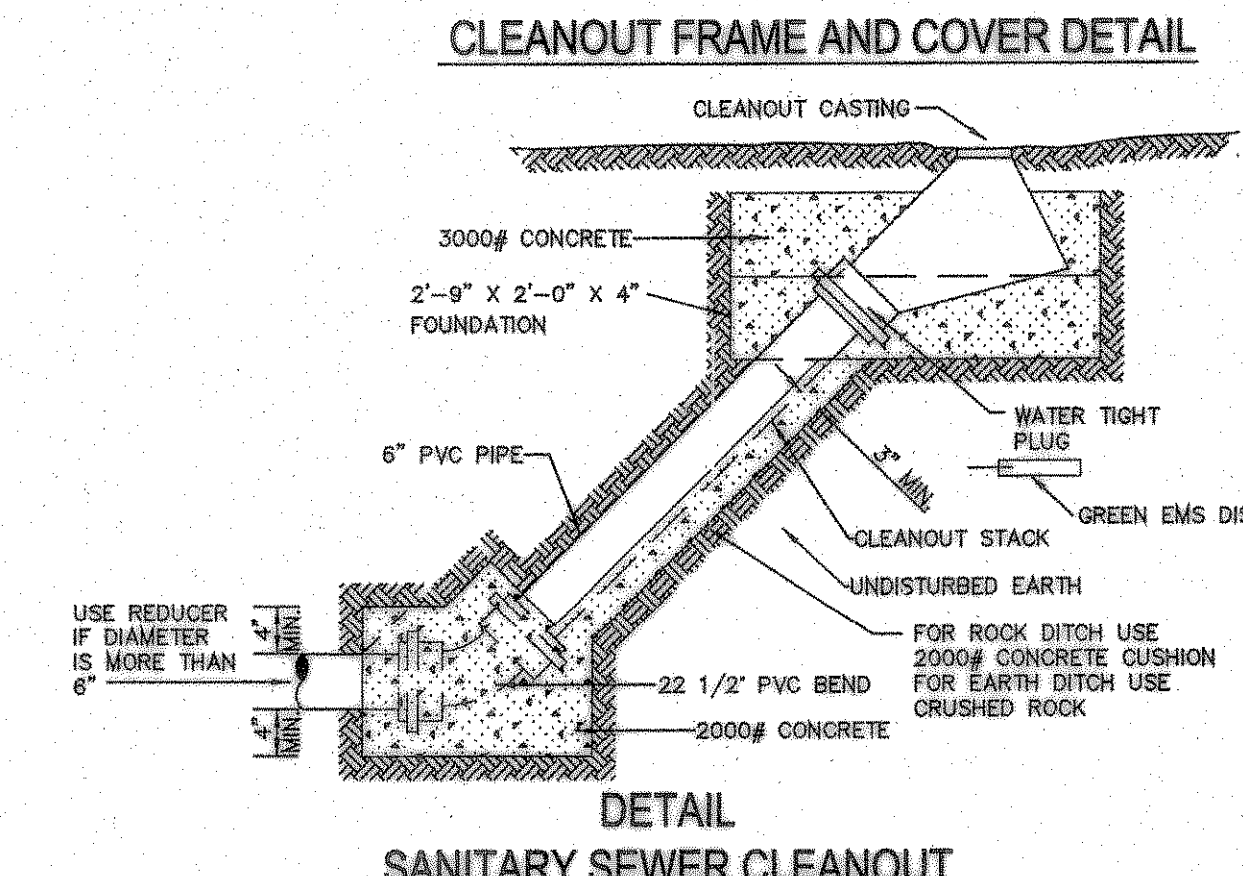


**DETAIL SANITARY SEWER SERVICE**  
3/4"x1'-0"



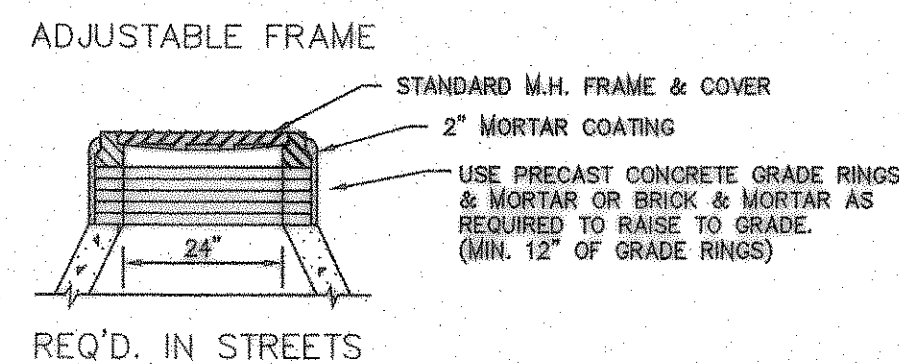
**LATERAL CONNECTION FOR DITCHES WITH SLOPING SIDES USING PVC PIPE**

NOTE:  
STRUCTURAL CONCRETE TO BE 4,200 P.S.I. MINIMUM STRENGTH

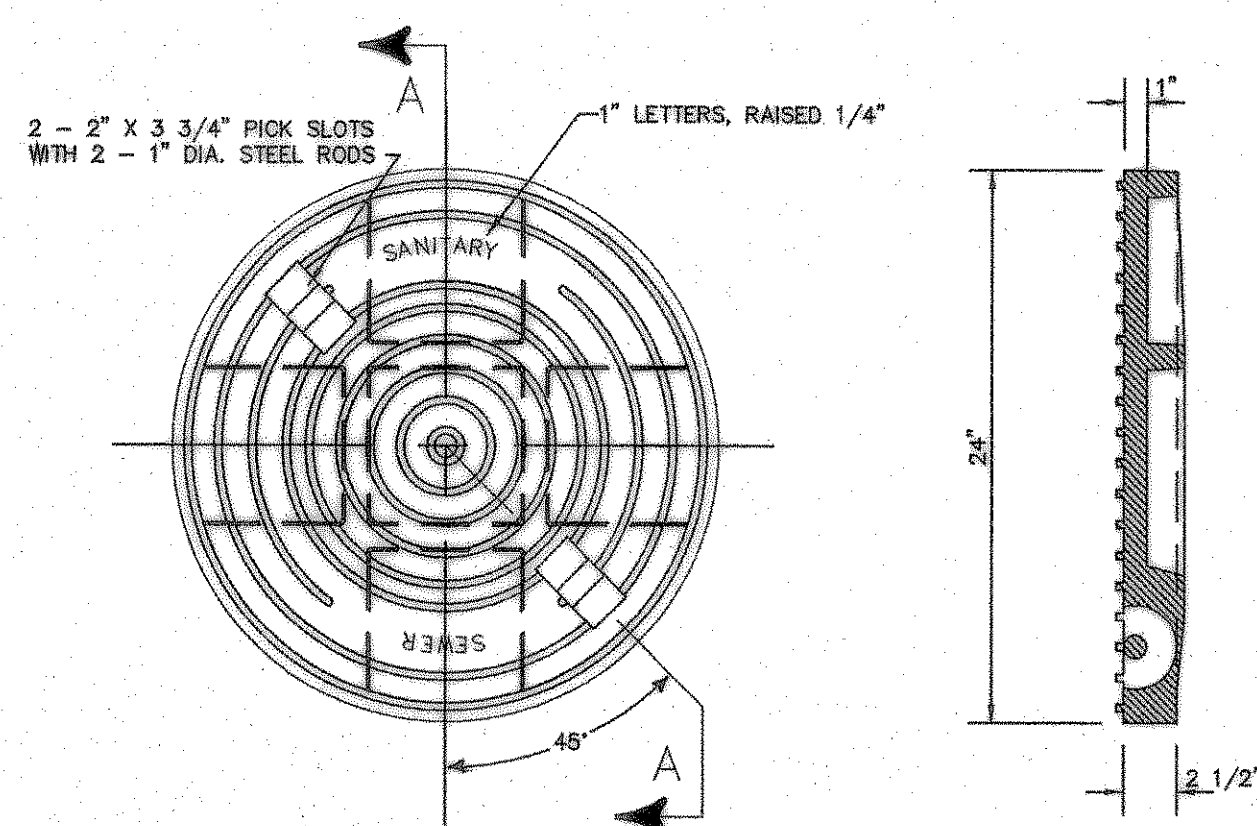


**CLEANOUT FRAME AND COVER DETAIL**

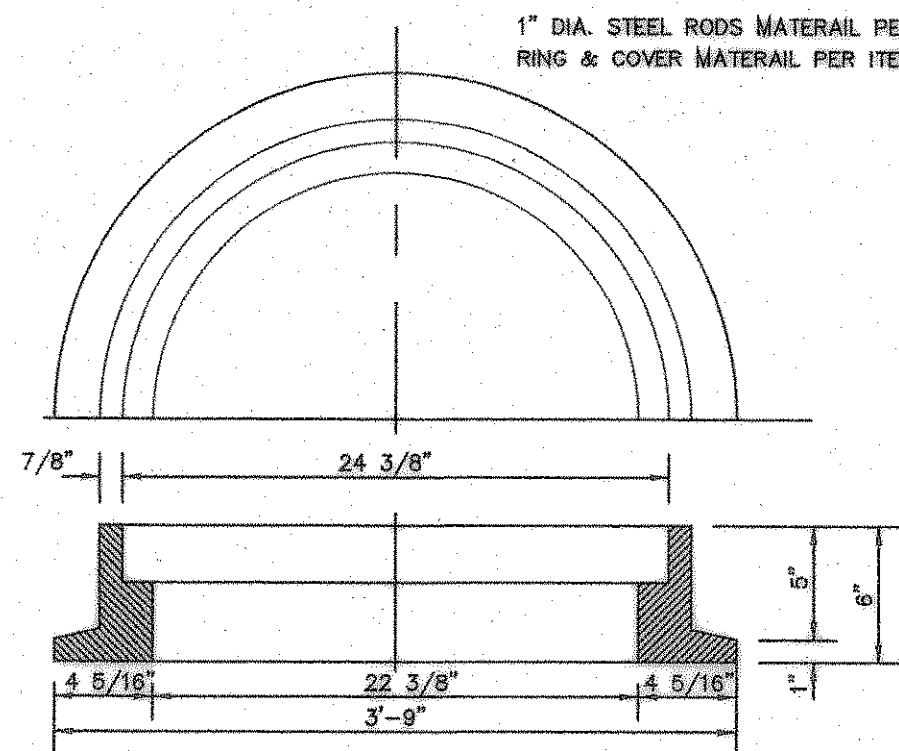
**DETAIL SANITARY SEWER CLEANOUT**



**ADJUSTABLE FRAME**

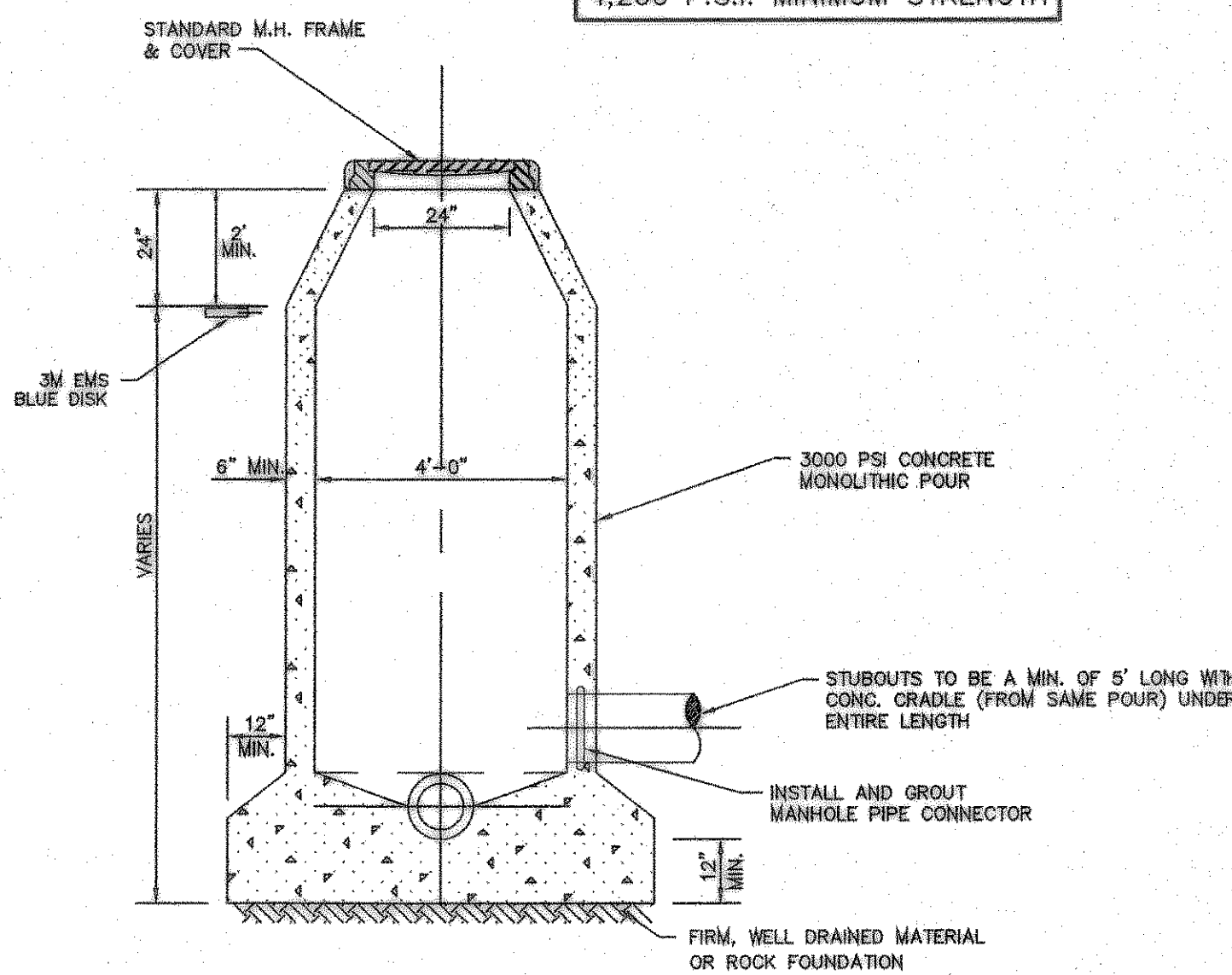


**PLAN OF COVER**



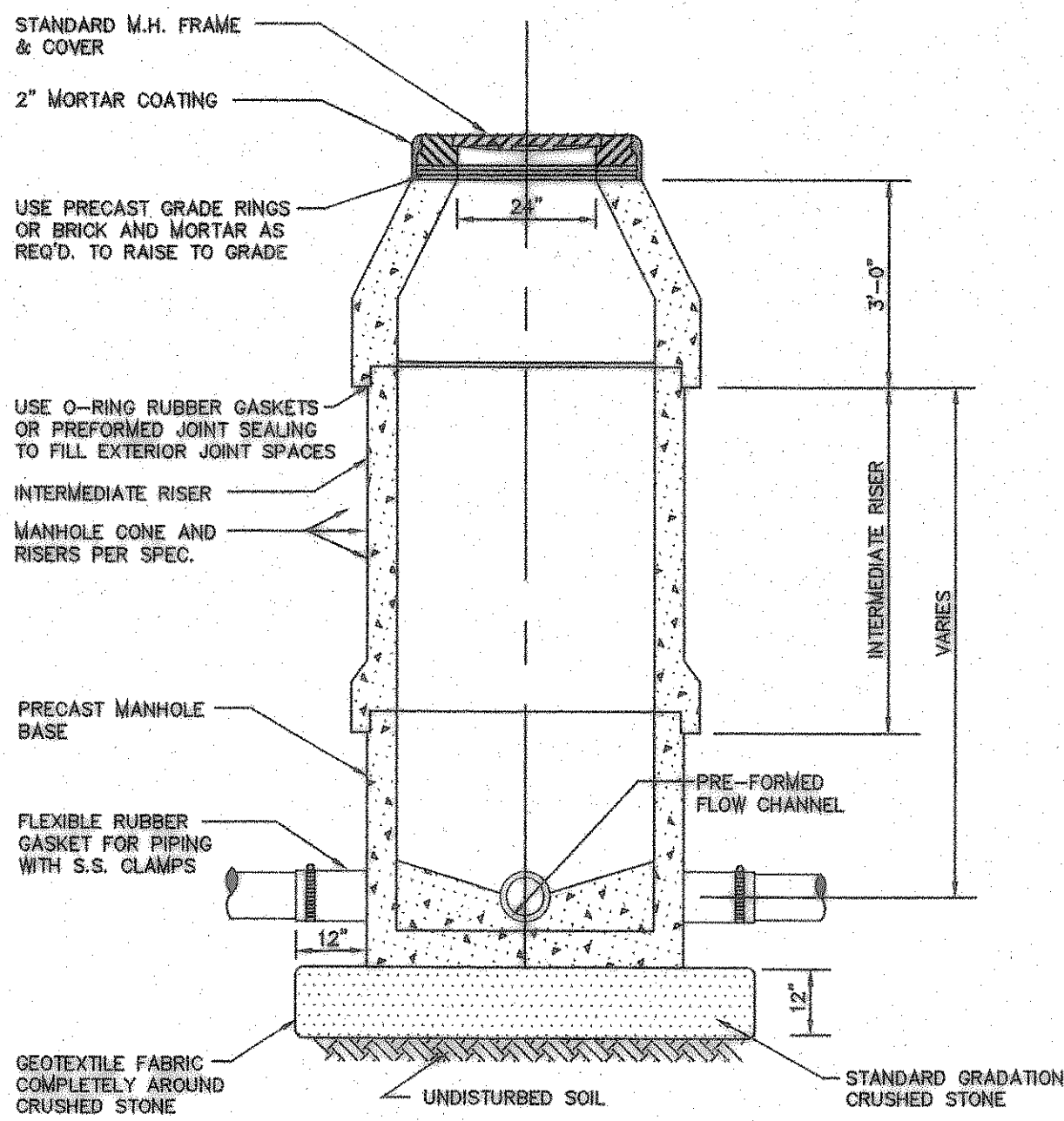
**MANHOLE FRAME & COVER DETAIL**

NOTE:  
THE BASS AND HAYES MANHOLE FRAME AND COVER, NO. 360-24P IS ACCEPTABLE.



**STANDARD CAST-IN-PLACE MANHOLE**

NOTE:  
FOR TYPE "S" MANHOLES USE PRESSURE TYPE MANHOLE FRAME AND COVER. DO NOT USE GRADE RINGS. SET ANCHOR BOLTS DIRECTLY IN MANHOLE CONE.



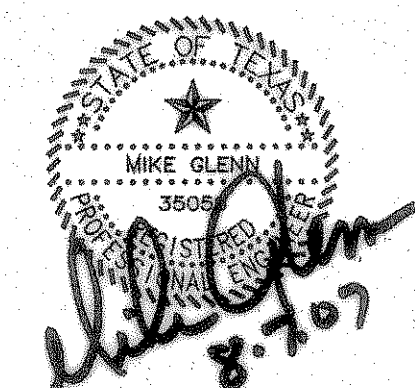
**STANDARD PRECAST MANHOLE**

NOTE:  
FOR TYPE "S" MANHOLES USE PRESSURE TYPE MANHOLE FRAME AND COVER. DO NOT USE GRADE RINGS. SET ANCHOR BOLTS DIRECTLY IN MANHOLE CONE.



Consultants:  
 CIVIL: GLENN ENGINEERING CORP  
 STRUCTURAL: SHW GROUP, LLP  
 MEP: ESTES McCURE AND ASSOCIATES.  
 FOOD SERVICE: H. G. RICE Inc.  
 LANDSCAPING: GRUBBS RAMSEY

FINAL PLANS FOR BIDDING AND CONSTRUCTING



**Rockwall Independent School District**

**ROCKWALL ELEMENTARY SCHOOL #11**  
RISD, TEXAS

Project Number: 1441.05.021  
 Drawing Date: 3/09/2006  
 Drawn: R.HOWMAN  
 Checked: RAH  
 Scale: AS SHOWN  
 ACAD File: BUSIEK-Details-ALL.dwg  
 © 2006 SHW Group, LLP

Revisions:  
 1 07/20/2006 CITY COMMENTS  
 2 08/15/2006 CITY COMMENTS  
 3 10/17/2006 REVISED BOX ELEVATIONS  
 4 10/23/2006 WATER REVISIONS

**RECORD DRAWING**  
 This is to certify that changes and corrections have been made to conform to the contractor's record of this project.  
 Signed: *Mike Glenn* 8-7-07  
 Date: 8-7-07  
 Glenn Engineering Corporation

**SANITARY SEWER DETAILS**  
N.T.S.

**GLENN ENGINEERING**  
 PHONE 972-777-9591 FAX 972-777-2076  
 100 DECKER COURT - SUITE 810 IRVING, TEXAS 75038

**CU 1.10**