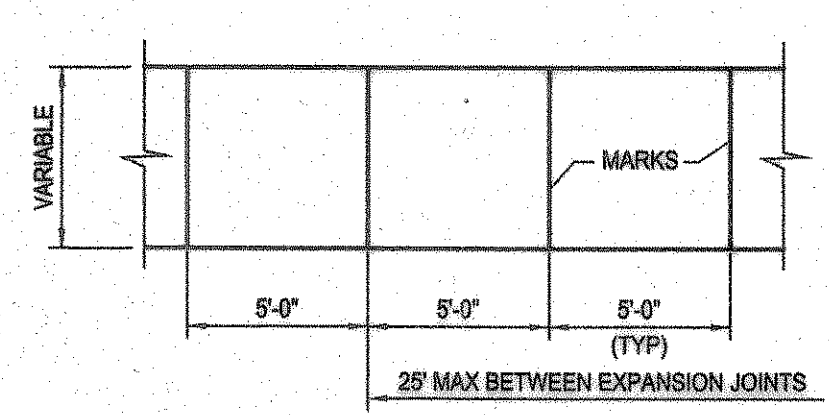
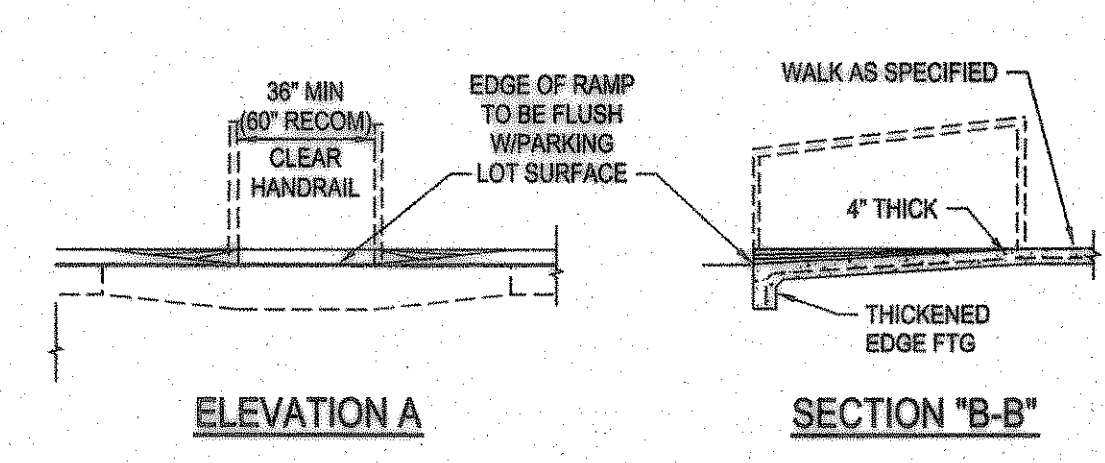


**ACCESSIBLE PARKING STALL DETAILS**  
NOT TO SCALE

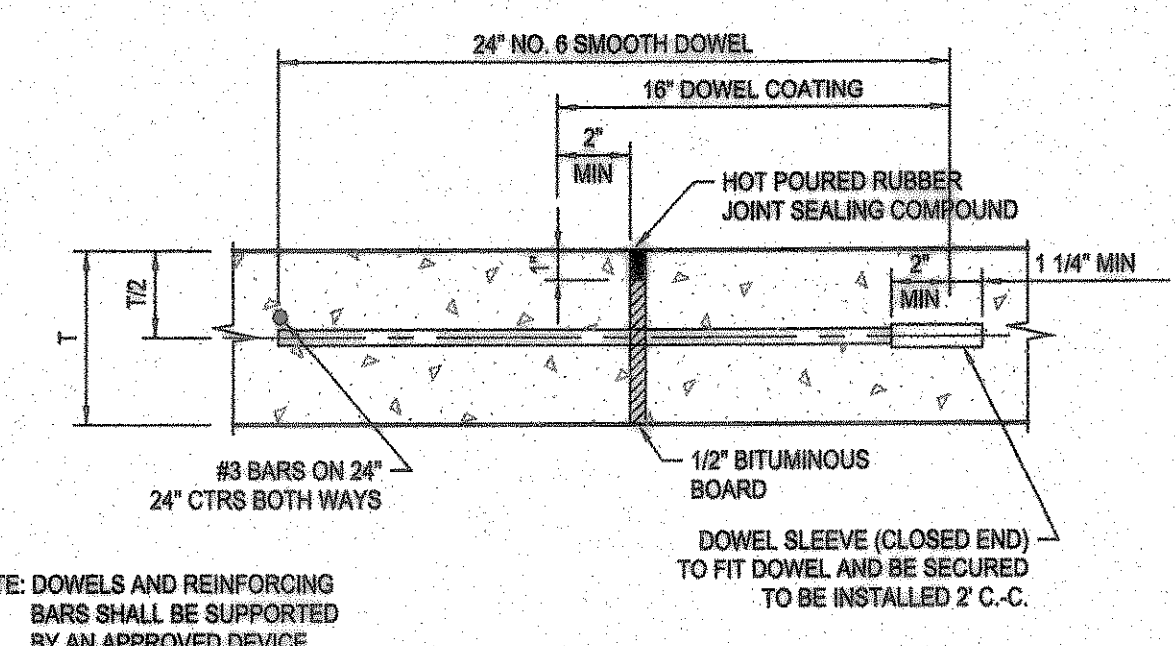


**SIDEWALK PLAN**  
NTS

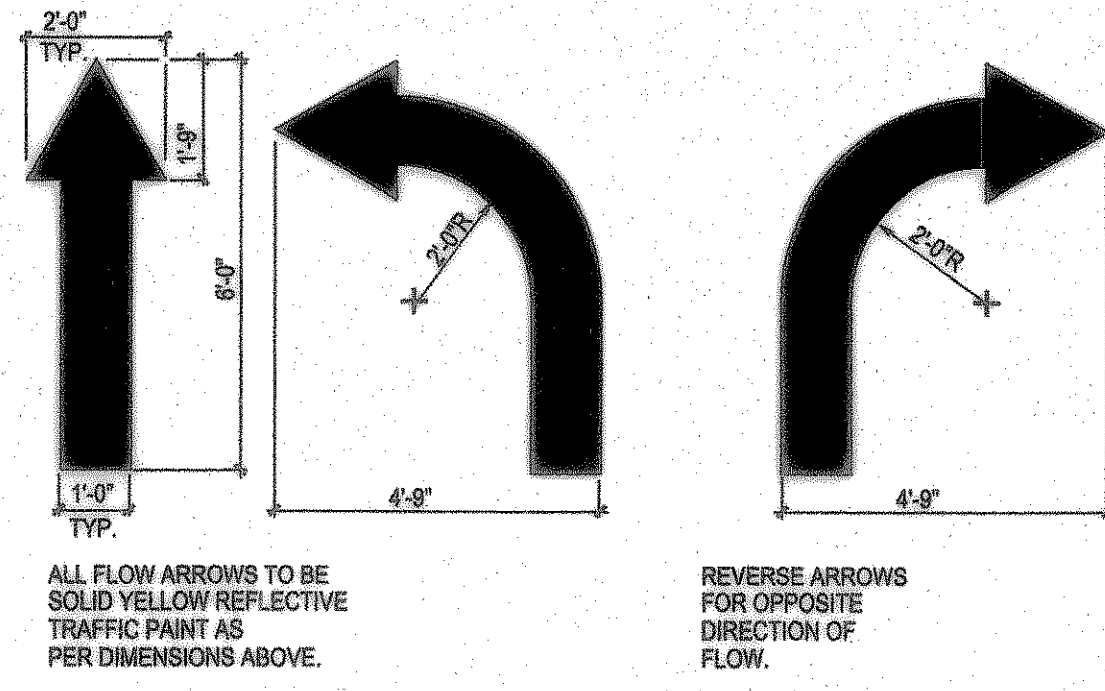


**CONCRETE RAMP-INTERNAL**  
SCALE: 1/4" = 1'-0"

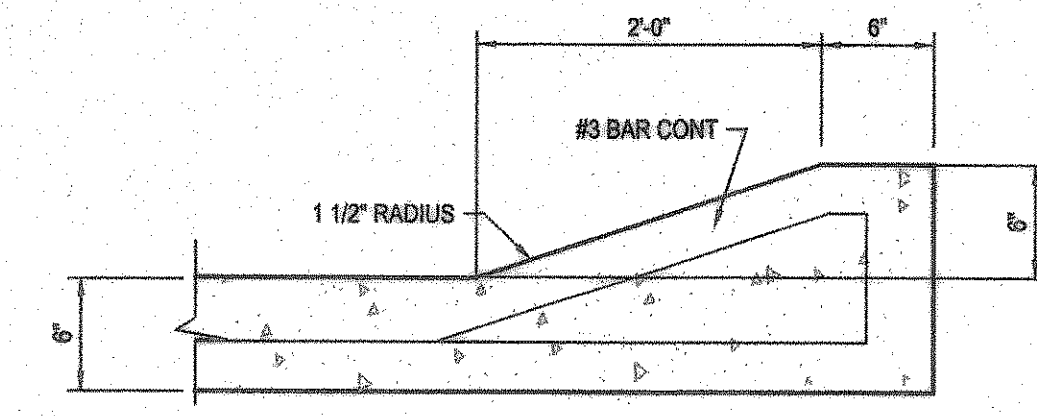
**PAVING NOTES**  
THE INITIAL SOIL TEST AND REPORT PREPARED BY FUGRO-SOUTH, INC. REPORT NO. 0703-1081 AND ANY AND ALL SUBSEQUENT REPORTS PREPARED FOR THIS PROJECT BY FUGRO-MOCELLAND OR BY OTHER FIRM, AGENCY OR ENTITY, EVEN THOUGH NO SPECIFIC REFERENCE TO ANY SUCH REPORTS ARE CONTAINED IN THE PLANS AND/OR SPECIFICATIONS FOR THIS PROJECT, ARE MADE A PART OF THIS SITE PLAN. A COPY CAN BE OBTAINED THROUGH THE ARCHITECT OR ENGINEER.



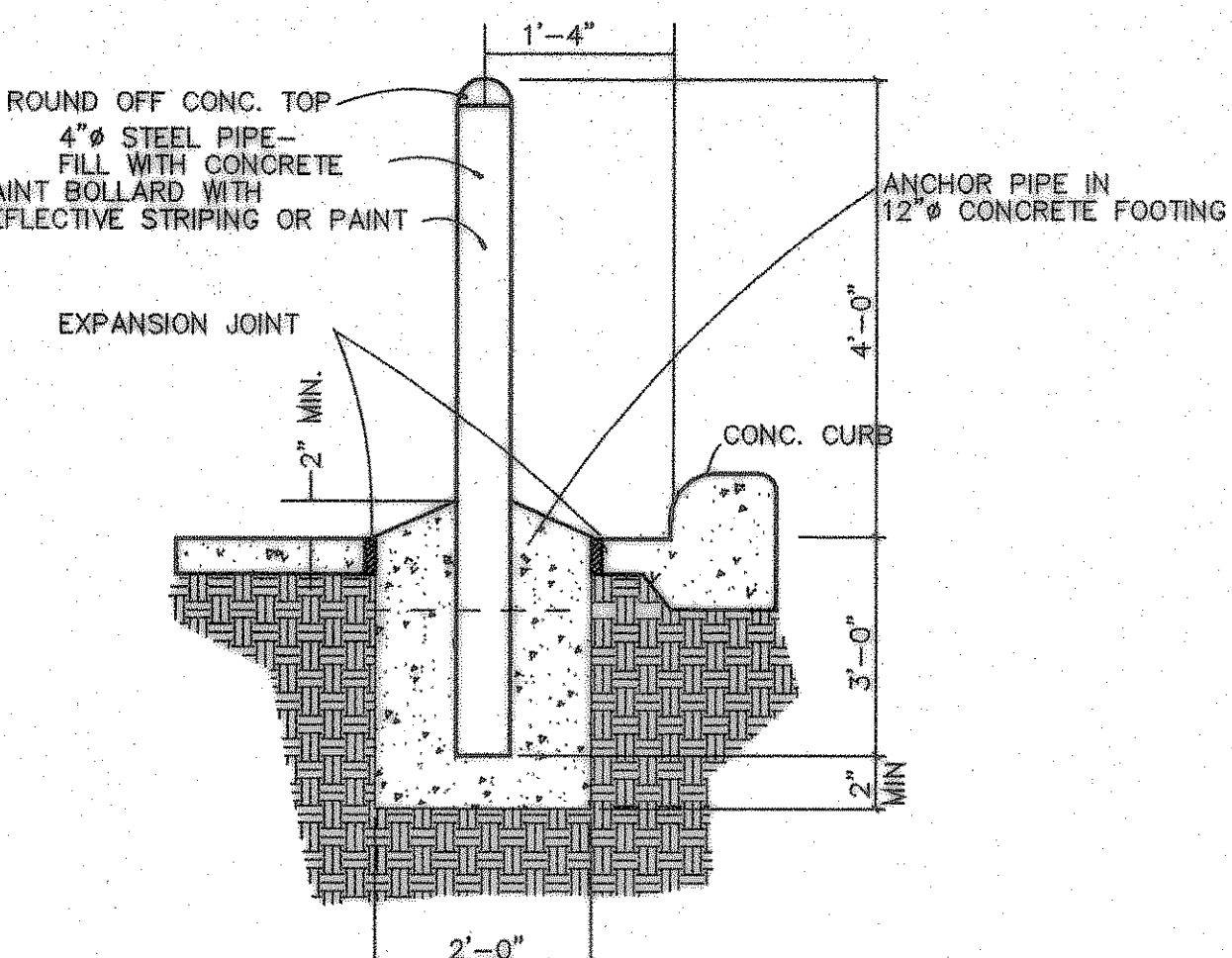
**EXPANSION JOINT DETAIL**  
NTS MAXIMUM SPACING = 150 FEET



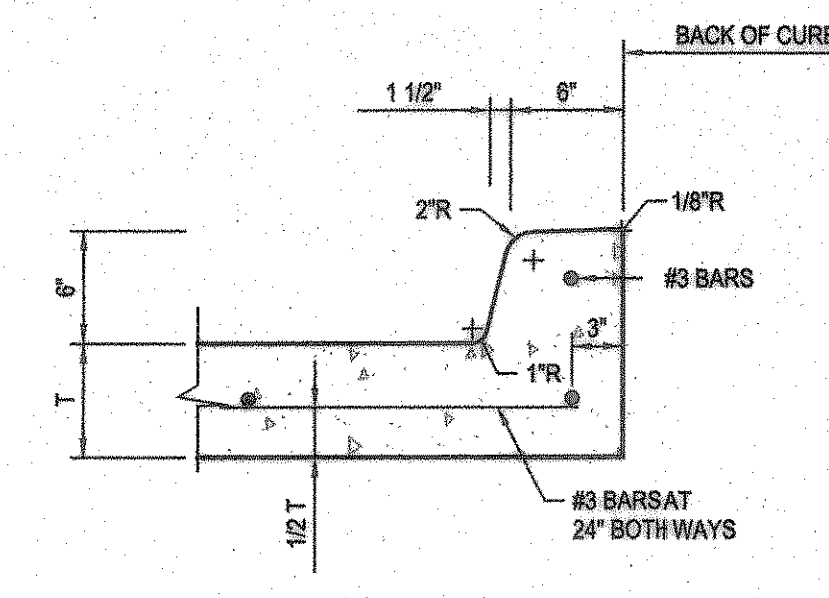
**PAINTED TRAFFIC ARROWS**  
NOT TO SCALE



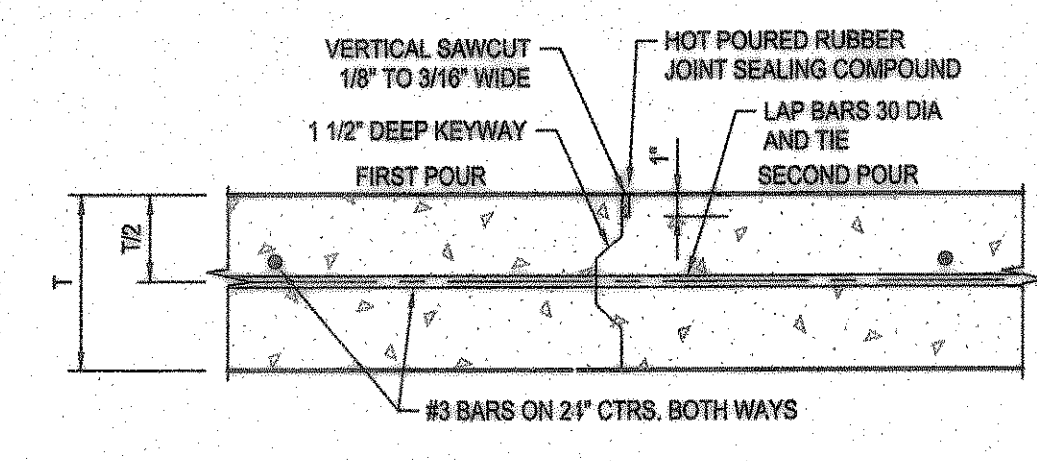
**TYPICAL ROLL-OVER CURB**  
NTS



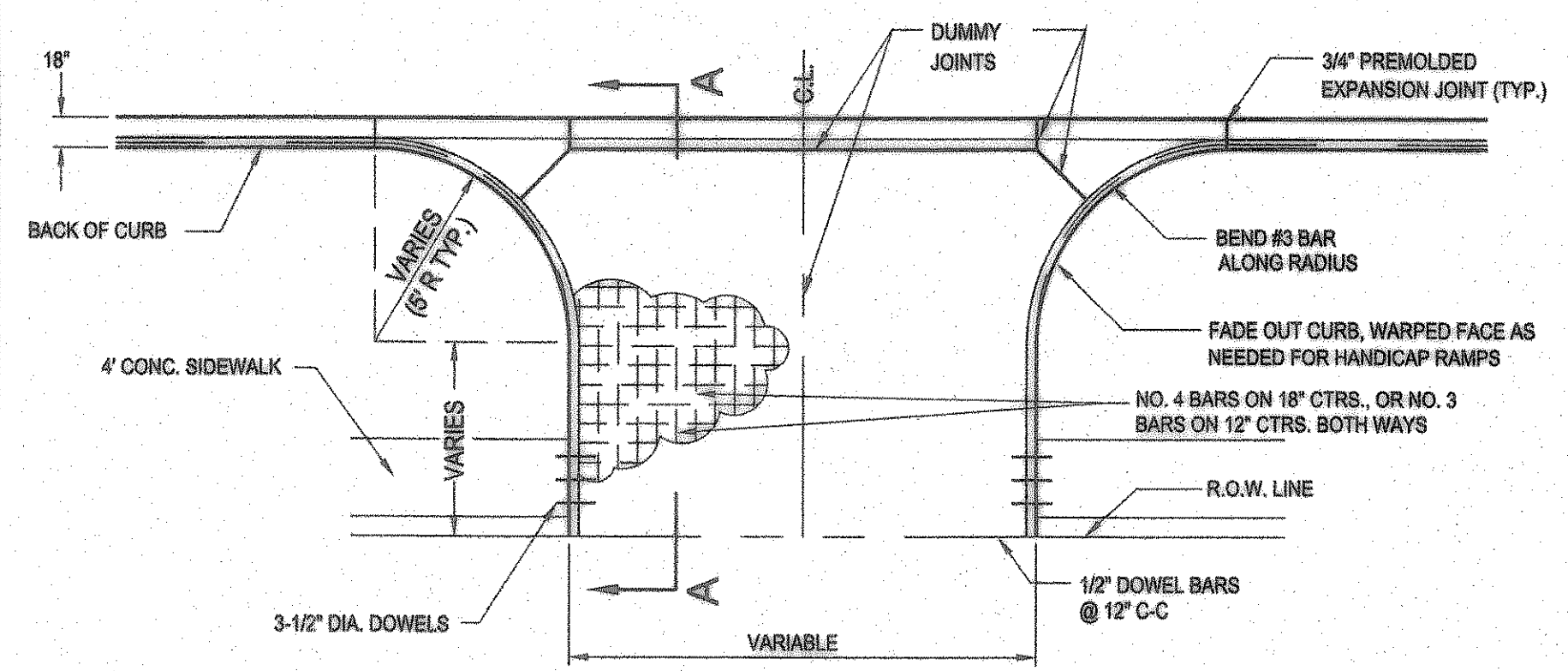
**STEEL PIPE BOLLARD DETAIL**  
NOT TO SCALE



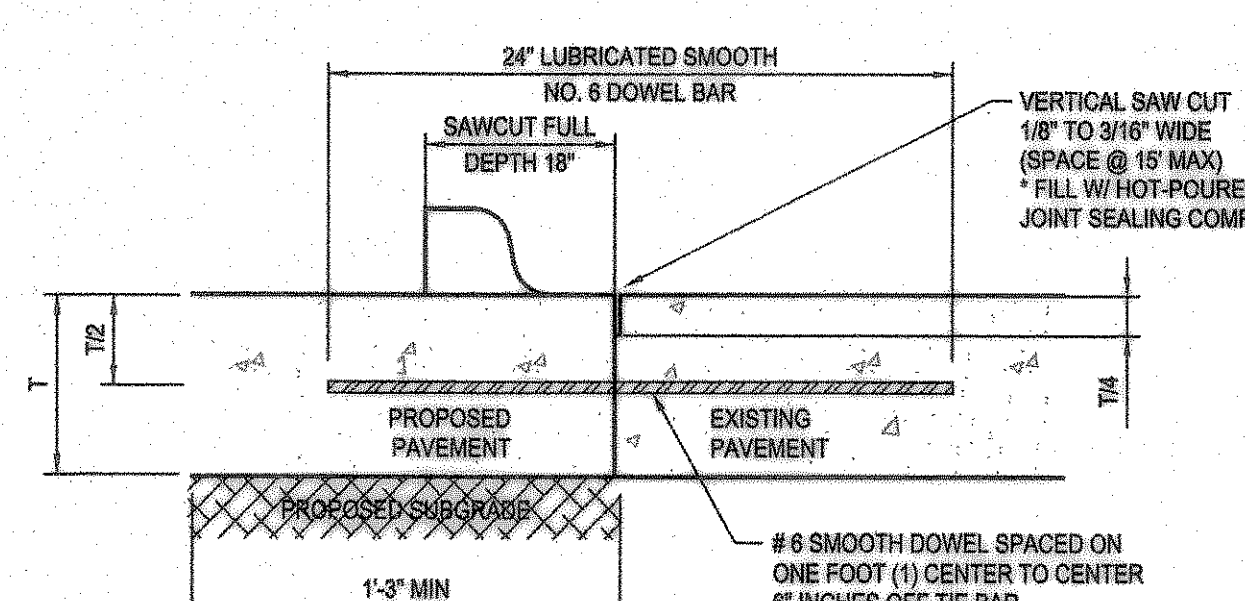
**INTEGRAL CURB & GUTTER**  
NTS



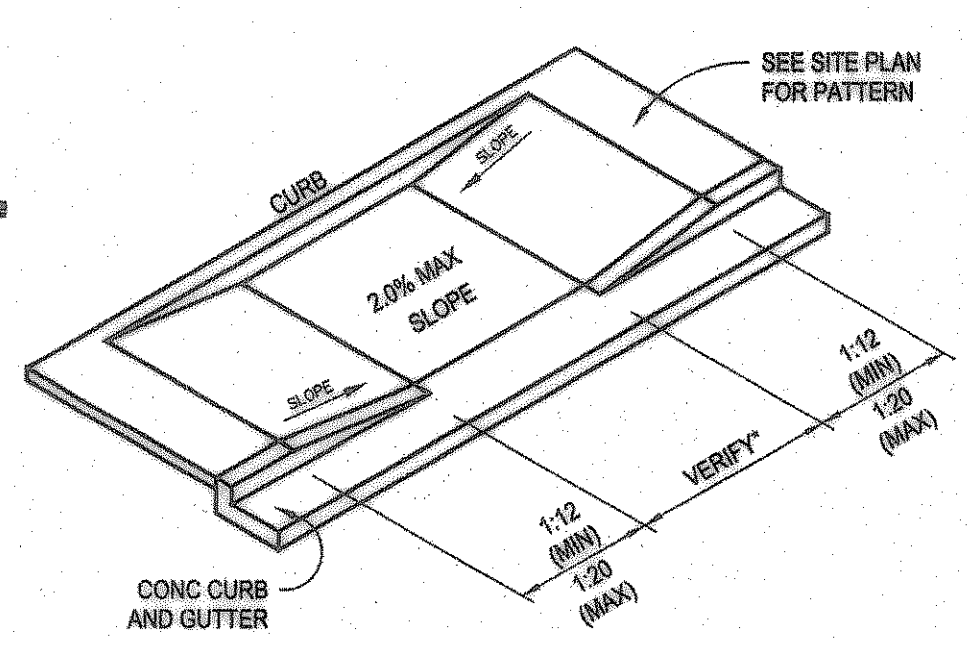
**CONSTRUCTION JOINT DETAIL (L)**  
NTS



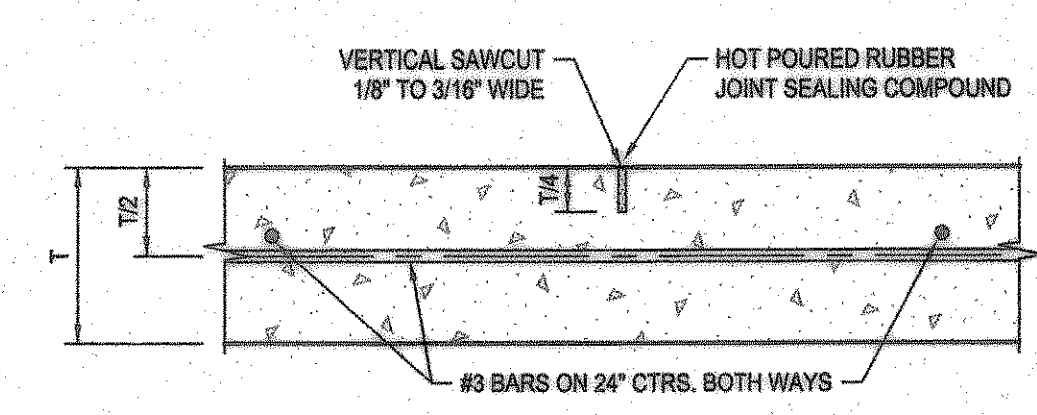
**TYPICAL DRIVE APPROACH**  
SCALE: 1/8" = 1'-0"



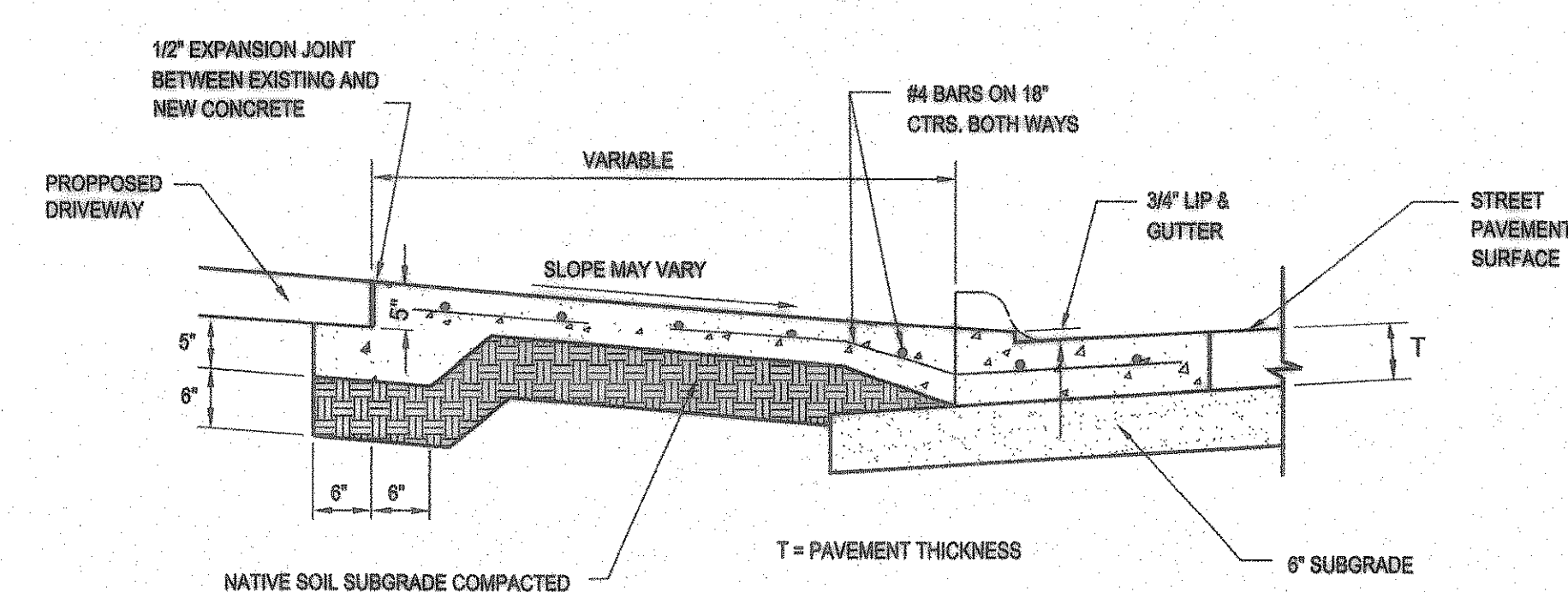
**LONGITUDINAL BUTT DETAIL**  
NTS



**HANDICAP RAMP DETAIL**  
NTS



**SAWED DUMMY JOINT DETAIL (T)**  
NTS MAXIMUM SPACING = 15 FEET



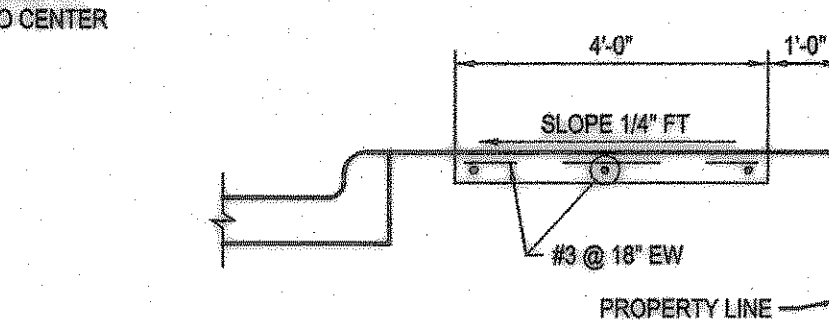
**SECTION A-A (FOR TYPICAL DRIVE APPROACH)**  
SCALE: 3/4" = 1'-0"

**LONGITUDINAL BUTT DETAIL**  
NTS

TO BE USED WHERE PROPOSED CONCRETE PAVEMENT MEETS EXISTING CONCRETE PAVEMENT

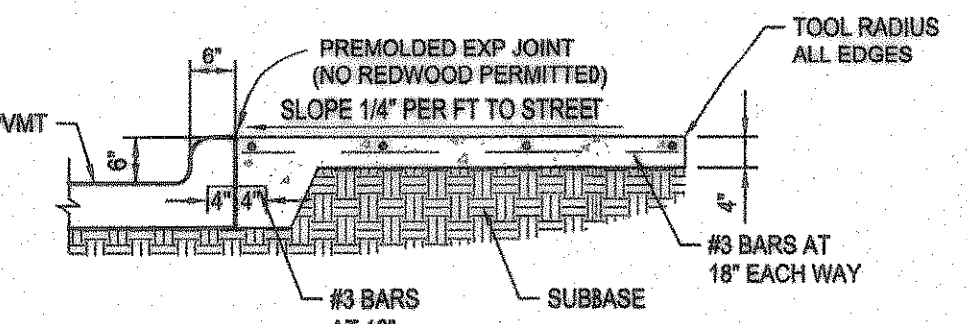
NOTES:

- NO. 5 SMOOTH DOWEL BAR MAY BE USED IN 5", 6" AND 7" PAVEMENT THICKNESS.
- LONGITUDINAL BUTT CONSTRUCTION MAY BE UTILIZED IN PLACE OF LONGITUDINAL HINGED (KEYWAY) JOINT AT CONTRACTOR'S OPTION.
- DOWEL BARS SHALL BE DRILLED INTO PAVEMENT HORIZONTALLY BY USE OF A MECHANICAL RIG. DRILLING BY HAND IS NOT APPLICABLE. PUSHING DOWEL BARS INTO GREEN CONCRETE IS NOT ACCEPTABLE.



**WALK/BUILDING/CURB INTERFACE**  
NTS

**NOTE: NO SAND WILL BE PERMITTED UNDER PAVEMENT.**



**INTERIOR SIDEWALK TYPICAL SECTION**  
NTS

**RECORD DRAWING**

This is to certify that changes and corrections have been made to conform to the engineer's record of this project.

Signed: *Glenn* Date: 8-7-07

Glenn Engineering Corporation

**PRIVATE PAVING DETAILS**

**GLENN ENGINEERING**

PHONE 972-770-5951 FAX 972-770-2776  
125 DECKER COURT - SUITE 910 FIRM, TEXAS 75026

**Consultants:**

CIVIL: GLENN ENGINEERING CORP

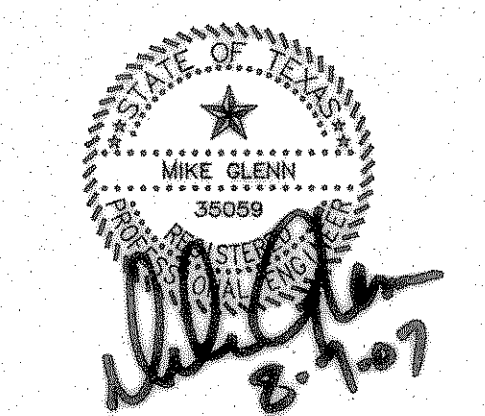
STRUCTURAL: SHW GROUP, LLP

MEP: ESTES McCLURE AND ASSOCIATES.

FOOD SERVICE: H. G. RICE Inc.

LANDSCAPING: GRUBBS RAMSEY

FINAL PLANS FOR BIDDING AND CONSTRUCTING



**Rockwall Independent School District**

**ROCKWALL ELEMENTARY SCHOOL #11**  
RISD, TEXAS

Project Number: 1441.05.021  
Drawing Date: 3/09/2006  
Drawn: R.HOWMAN  
Checked: RAH  
Scale: AS SHOWN  
ACAD File: BUSIEK-Details-ALL.dwg  
© 2006 SHW Group, LLP

Revisions:

- 07/20/2006 CITY COMMENTS
- 08/15/2006 CITY COMMENTS
- 10/17/2006 REVISED BOX ELEVATIONS
- 10/23/2006 WATER REVISIONS

Sheet Title:  
**PAVING DETAILS**

**CP 1.02**

User: Rick Aug 07, 2007 - 3:34pm \\Roberthp\C-DRIVE\ROCKISD\DALTON RANCH BUSIEK ELEM\FINAL SET\DETAILS\BUSIEK-Details-ALL.dwg