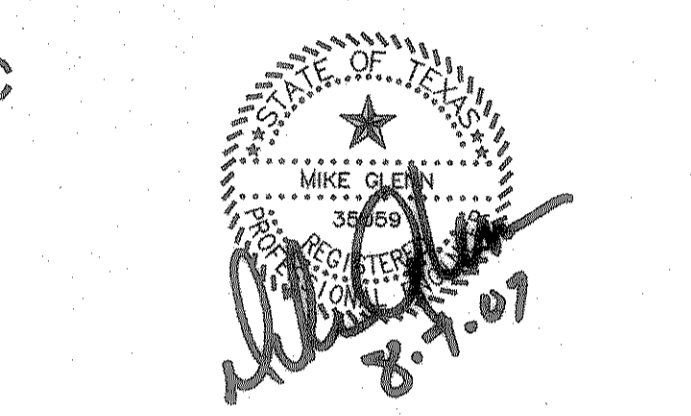


Consultants:
 CIVIL:
 GLENN ENGINEERING CORP
 STRUCTURAL:
 SHW GROUP, LLP
 MEP:
 ESTES MCLURE AND ASSOCIATES.
 FOOD SERVICE:
 H. G. RICE Inc.
 LANDSCAPING:
 GRUBBS RAMSEY

FINAL PLANS FOR BIDDING AND CONSTRUCTING



Rockwall Independent School District

ROCKWALL ELEMENTARY SCHOOL #11
RISD, TEXAS

Project Number: 1441.05.021
 Drawing Date: 3/09/2006
 Drawn: R. HOWMAN
 Checked: RAH
 Scale: AS SHOWN
 ACAD File: BUSIEK-ENG-SITE2_CITYREV3.dwg
 © 2006 SHW Group, LLP

Revisions:
 1 07/20/2006 CITY COMMENTS
 2 08/15/2006 CITY COMMENTS
 3 10/17/2006 REVISED BOX ELEVATIONS
 4 10/23/2006 WATER REVISIONS

Sheet Title:
OVERALL GRADING PLAN

CG 1.01

GENERAL GRADING & DRAINAGE NOTES

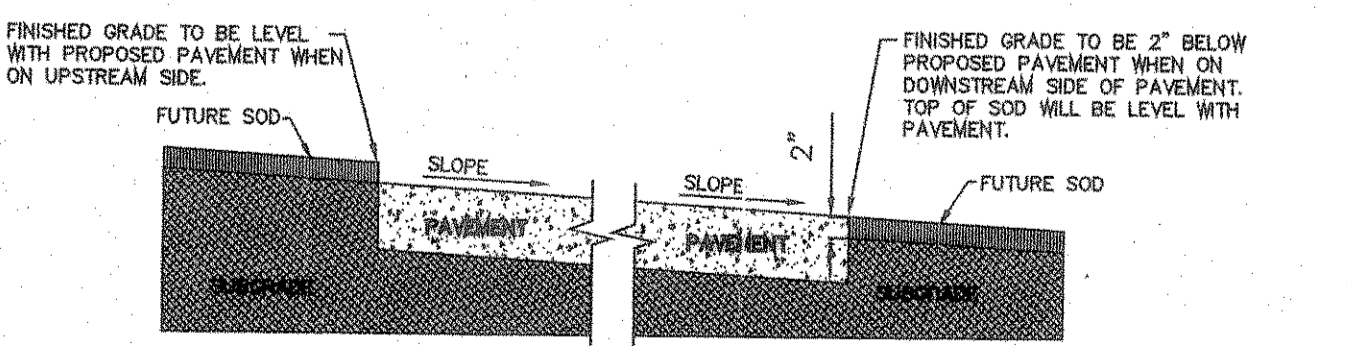
- ALL CONSTRUCTION TO BE IN ACCORDANCE WITH THESE PLANS AND CITY OF ROCKWALL STANDARDS AND SPECIFICATIONS.
- PRIOR TO STARTING CONSTRUCTION, THE CONTRACTOR SHALL MAKE CERTAIN THAT ALL REQUIRED PERMITS AND APPROVALS HAVE BEEN OBTAINED. NO CONSTRUCTION OR FABRICATION SHALL BEGIN UNTIL THE CONTRACTOR HAS RECEIVED AND THOROUGHLY REVIEWED ALL PLANS AND OTHER DOCUMENTS APPROVED BY ALL OF THE PERMITTING AUTHORITIES.
- ALL WORK SHALL BE PERFORMED IN ACCORDANCE WITH THESE PLANS AND SPECIFICATIONS AND THE REQUIREMENTS AND STANDARDS OF THE LOCAL GOVERNING AUTHORITY.
- IN THE EVENT AN ITEM IS NOT COVERED IN THE CITY OF ROCKWALL SPECIFICATIONS, THE CITY ENGINEER'S DECISION SHALL APPLY.
- BARRICADING, TRAFFIC CONTROL, AND PROJECT SIGNS SHALL CONFORM TO "STATE DEPARTMENT OF HIGHWAYS AND PUBLIC TRANSPORTATION BARRICADING AND CONSTRUCTION STANDARDS".
- THE GENERAL CONTRACTOR AND ALL SUB-CONTRACTORS SHALL VERIFY THE SUITABILITY OF ALL EXISTING AND PROPOSED SITE CONDITIONS INCLUDING GRADES AND DIMENSIONS BEFORE COMMENCEMENT OF ANY CONSTRUCTION. IN THE EVENT OF ANY CONFLICT AND PRIOR TO COMMENCEMENT OF ANY CONSTRUCTION, IMMEDIATELY NOTIFY ENGINEER. MINOR ADJUSTMENTS OF FINISH GRADE TO ACCOMPLISH SPOT DRAINAGE ARE ACCEPTABLE. IF NECESSARY, UPON PRIOR APPROVAL OF ENGINEER, PAVING INSTALLED SHALL "FLUSH OUT" AT ANY JUNCTURE WITH EXISTING PAVING.
- THE LOCATIONS OF UNDERGROUND UTILITIES SHOWN ON THIS PLAN ARE BASED ON FIELD SURVEYS AND LOCAL UTILITY COMPANY RECORDS. IT SHALL BE THE CONTRACTOR'S FULL RESPONSIBILITY TO CONTACT THE VARIOUS UTILITY COMPANIES TO LOCATE THEIR UTILITIES PRIOR TO STARTING CONSTRUCTION.
- CONTRACTOR SHALL VERIFY ALL EXISTING INVERTS AND RIM ELEVATIONS PRIOR TO CONSTRUCTION.
- ALL PROPOSED CONTOURS ARE APPROXIMATE. PROPOSED SPOT ELEVATIONS AND DESIGNATED GRADIENT ARE TO BE USED IN THE EVENT OF ANY DISCREPANCIES.
- IT IS THE CONTRACTOR'S RESPONSIBILITY TO LOCATE AND/OR ESTABLISH A BENCHMARK (BASE UPON EXISTING CONDITION SHOWN ON THIS PLAN) PRIOR TO CONSTRUCTION.
- AT ALL DOORWAYS CONCRETE SIDEWALK SHALL MEET FLUSH WITH FOUNDATION SLAB AND MEET ALL ADA AND TDLR REQUIREMENTS.
- ALL COMPACTION OF FILL TO UTILIZE SHEEPS-FOOT ROLLER. ALL FILL TO BE COMPACTED TO 95% STANDARD DENSITY.

BENCH MARKS:

BENCHMARK 1: USGS MONUMENT - STAMPED BORN 1986
 LOCATED APPROXIMATELY 1.25 MILES EAST OF ROCKWALL AT THE ROCKWALL MUNICIPAL AIRPORT, IN THE NORTH END OF A CIRCULAR GRASS AREA AT THE END OF A TAXIWAY.
 ELEVATION = 573.94
 BENCHMARK 2: USGS MONUMENT - 5" CAP STAMPED N 1495/1986
 LOCATED 24.6 FEET WEST OF THE CENTER OF A PAVED ROAD LEADING TO THE ROCKWALL MUNICIPAL AIRPORT, 16.4 FEET SOUTH OF A UTILITY POLE WITH A TRANSFORMER AND LIGHT, 2 FEET WEST OF THE NORTH LEG OF A SIGN. ACCESS TO DATUM POINT IS THROUGH A 6 INCH LOGO CAP.
 ELEVATION = 586.70

LEGEND

- (883.60TW)— = PROPOSED TOP OF WALK
- (883.00TP)— = PROPOSED TOP OF PAVEMENT
- (883.50TC)— = PROPOSED TOP OF CURB
- (884.80EXTC)— = EXISTING TOP OF CURB
- 885--- = EXISTING CONTOUR
- 882— = PROPOSED CONTOUR
- >882— = DIRECTION OF FLOW

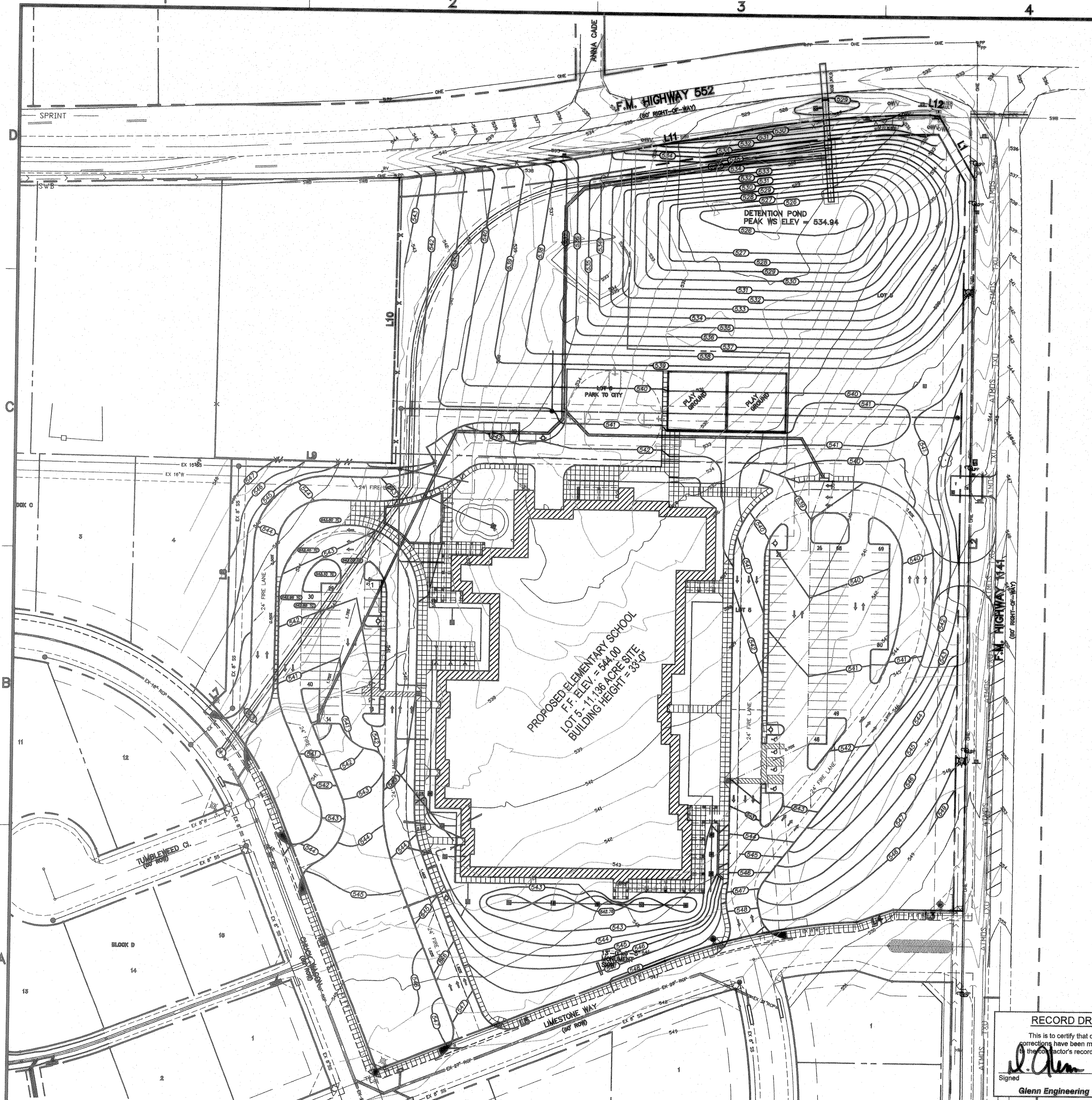


GRADING DETAIL FOR PAVEMENT WITHOUT CURB

RECORD DRAWING
 This is to certify that changes and corrections have been made to conform to the contractor's record of this project.
 Signed: *[Signature]* 8/7-07
 Date: 8/7-07
 Glenn Engineering Corporation

NORTH GRADING PLAN
 SCALE: 1" = 50'

GLENN ENGINEERING
 PHONE 972-717-0161 FAX 972-717-2176
 105 DECKER COURT - SUITE 910 IRVING, TEXAS 75062



User: Rick
 Aug 07, 2007 - 3:48pm
 R:\Robert\VC-DRIVE\ROCKISD\DALTON RANCH BUSIEK ELEM\FINAL SET\BUSIEK-ENG-SITE2_CITYREV3.dwg
 R:\Robert\VC-DRIVE\ROCKISD\DALTON RANCH BUSIEK ELEM\FINAL SET\BUSIEK-ENG-SITE2_CITYREV3.dwg