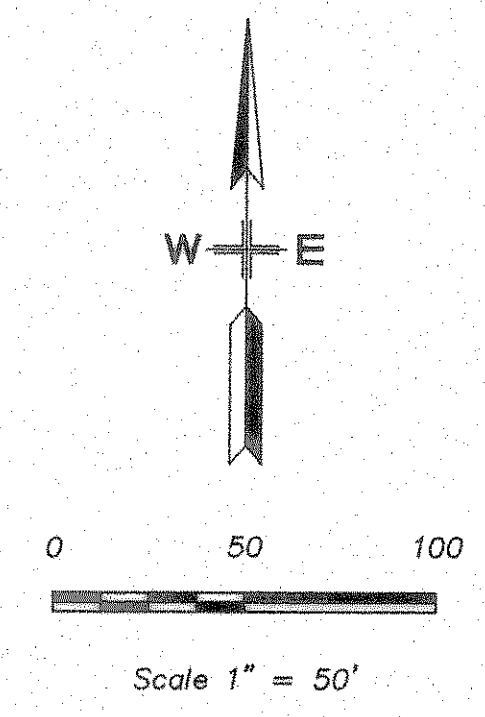
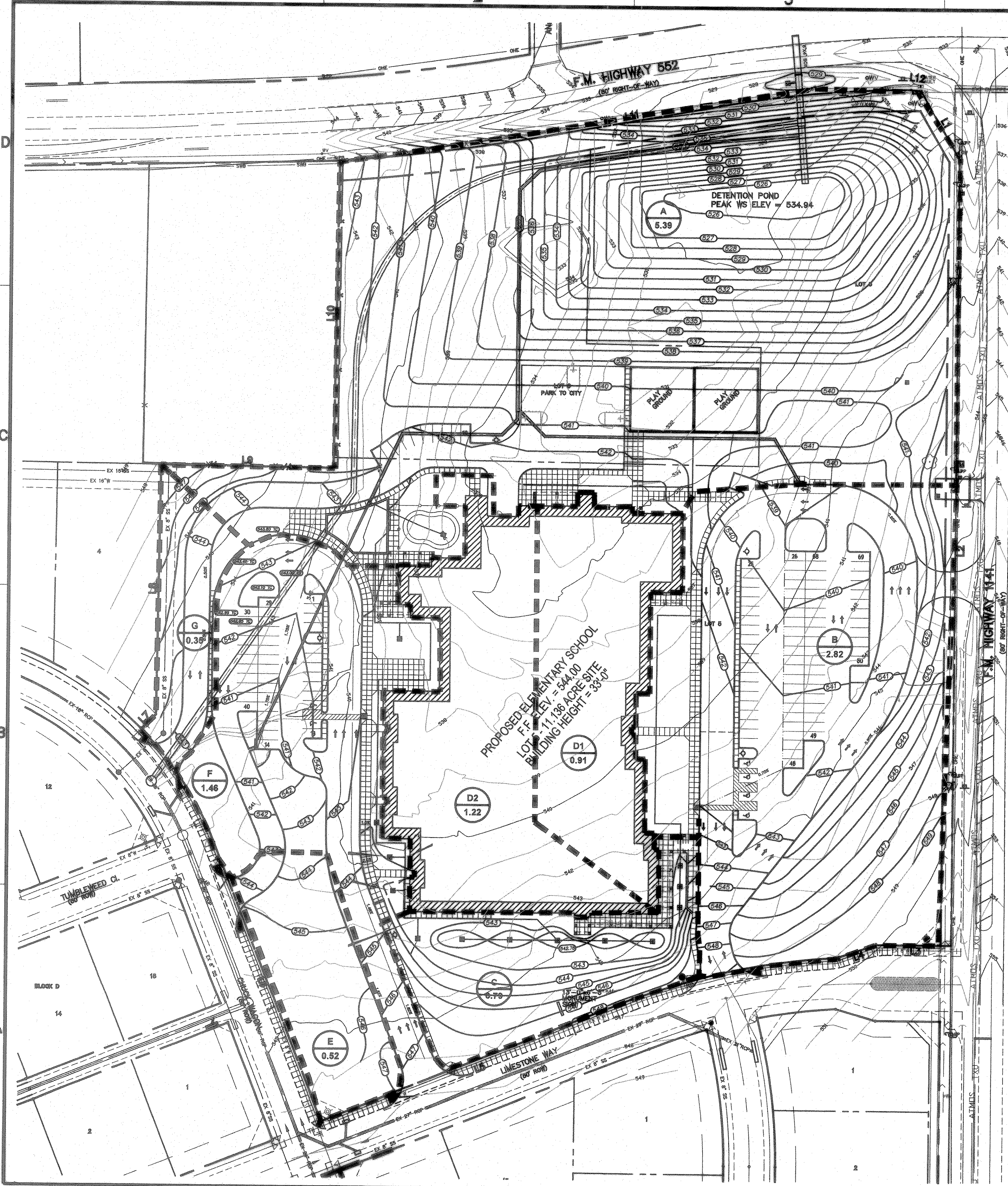


Aug 07, 2007 - 3:22pm User: Rick
 \\Robertp\C-DRIVE\ROCKISD\DALTON RANCH BUSIEK ELEM\FINAL SET\BUSIEK-ENG-SITE2_CITYREV3.dwg



AREA NO.	DRAINAGE AREA 'A' (ACRES)	TIME OF CONCENTRATION (IN MINUTES)	RUNOFF COEFFICIENT 'C'	INTENSITY '100' (IN/HR)	DESIGN FLOW Q 'Q 100' (cfs)	REMARKS
A	5.39	10	0.70	9.8	37.0	SHEET FLOW TO DETENTION POND
B	2.82	10	0.70	9.8	19.35	10' CURB INLET
C	0.79	10	0.70	9.8	3.60	AREA DRAINS
D1	0.91	10	0.70	9.8	6.24	ROOF DRAINS
D2	1.22	10	0.70	9.8	8.37	ROOF DRAINS
E	0.62	10	0.70	9.8	3.57	CHUCK WAGON STREET
F	1.46	10	0.70	9.8	10.01	10' CURB INLET
G	0.35	10	0.70	9.8	2.40	CHUCK WAGON STREET

BENCH MARKS:

BENCHMARK 1: USGS MONUMENT - STAMPED BOREN 1986
 LOCATED APPROXIMATELY 1.25 MILES EAST OF ROCKWALL AT THE ROCKWALL MUNICIPAL AIRPORT, IN THE NORTH END OF A CIRCULAR GRASS AREA AT THE END OF A TAXIWAY.
 ELEVATION = 573.94

BENCHMARK 2: USGS MONUMENT - 5" CAP STAMPED N 1495/1986
 LOCATED 24.8 FEET WEST OF THE CENTER OF A PAVED ROAD LEADING TO THE ROCKWALL MUNICIPAL AIRPORT, 16.4 FEET SOUTH OF A UTILITY POLE WITH A TRANSFORMER AND LIGHT, 2 FEET WEST OF THE NORTH LEG OF A SIGN. ACCESS TO DATUM POINT IS THROUGH A 5 INCH LOGO CAP.
 ELEVATION = 566.70

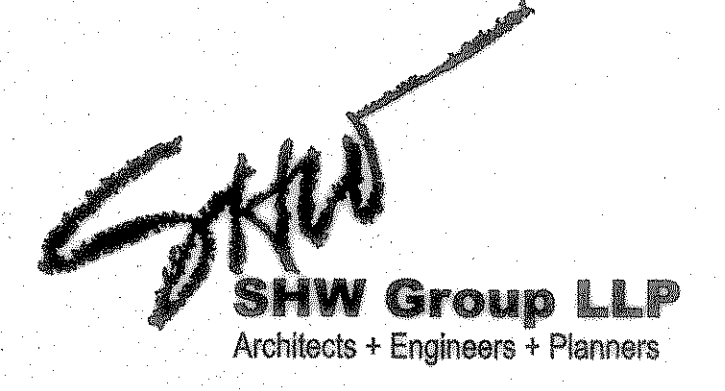
RECORD DRAWING

This is to certify that changes and corrections have been made to conform with the contractor's record of this project.

Signed: *[Signature]* Date: 8-7-07
 Glenn Engineering Corporation

DRAINAGE AREA MAP
 SCALE: 1" = 50'

GLENN ENGINEERING
 PHONE 972-797-5551 FAX 972-797-8276
 100 DECKEN COURT - SUITE 910 IRVING, TEXAS 75062



Consultants:

CIVIL:
GLENN ENGINEERING CORP
SHW GROUP, LLP

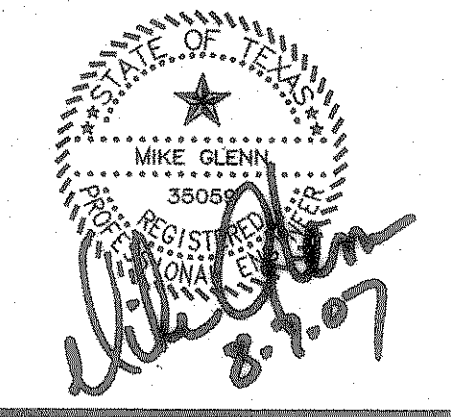
STRUCTURAL:
SHW GROUP, LLP

MEP:
ESTES McCLURE AND ASSOCIATES.

FOOD SERVICE:
H. G. RICE Inc.

LANDSCAPING:
GRUBBS RAMSEY

FINAL PLANS FOR BIDDING AND CONSTRUCTING



Rockwall Independent School District

ROCKWALL ELEMENTARY SCHOOL #11
 RISD, TEXAS

Project Number: 1441.05.021
 Drawing Date: 3/09/2006
 Drawn: R.HOWMAN
 Checked: RAH
 Scale: AS SHOWN
 ACAD File: BUSIEK-ENG-SITE2_CITYREV3.dwg
 © 2006 SHW Group, LLP

- Revisions:
- 1 07/20/2006 CITY COMMENTS
 - 2 08/15/2006 CITY COMMENTS
 - 3 10/17/2006 REVISED BOX ELEVATIONS
 - 4 10/23/2006 WATER REVISIONS

Sheet Title:
DRAINAGE AREA MAP

CG 1.05