

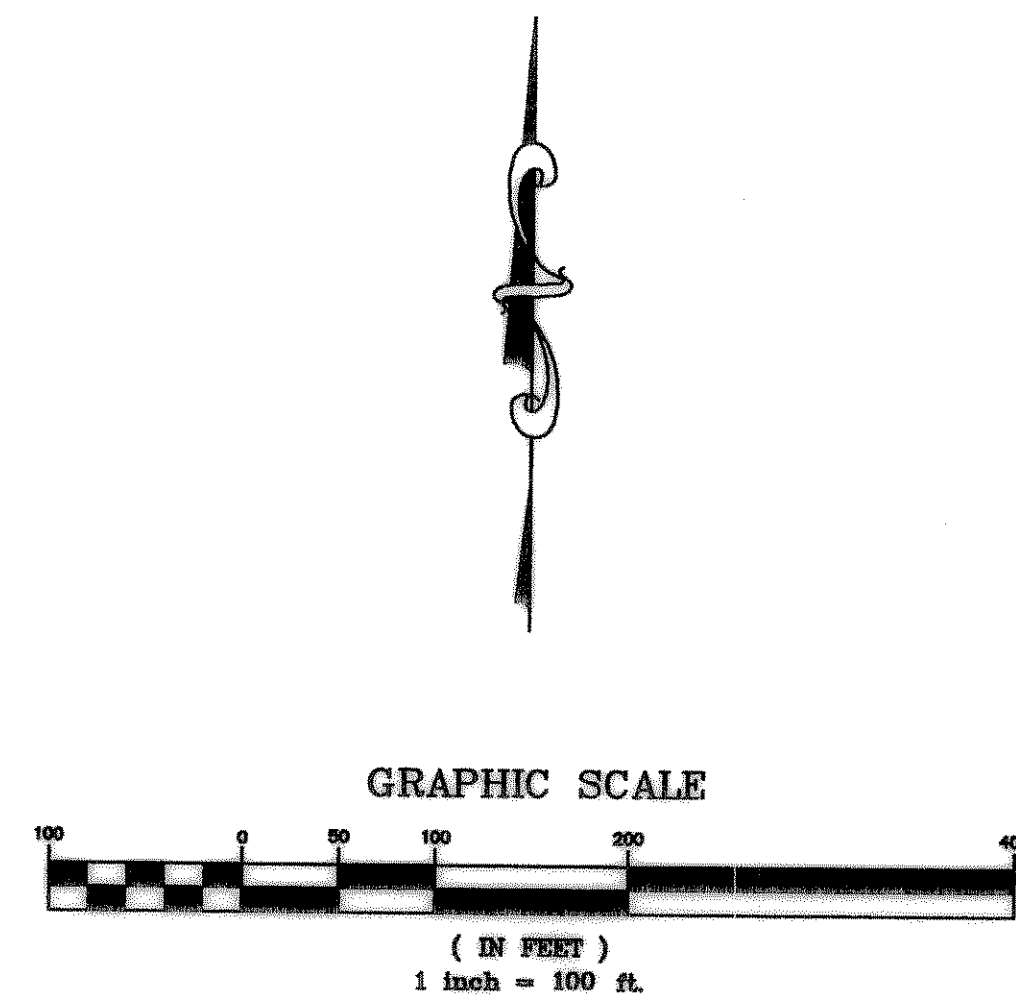
THE SEAL APPEARING ON THIS DOCUMENT WAS AUTHORIZED BY ALL DISBURSEMENT & REVENUE NO. 6012 ON 12/10/01

DOUPHRAITE & ASSOCIATES, INC.
 ENGINEERING - PROJECT MANAGEMENT - SURVEYING
 2835 RIDGE RD., # 200 ROCKWALL, TEXAS 76087
 PHONE: (972)771-9004 FAX: (972)771-9005

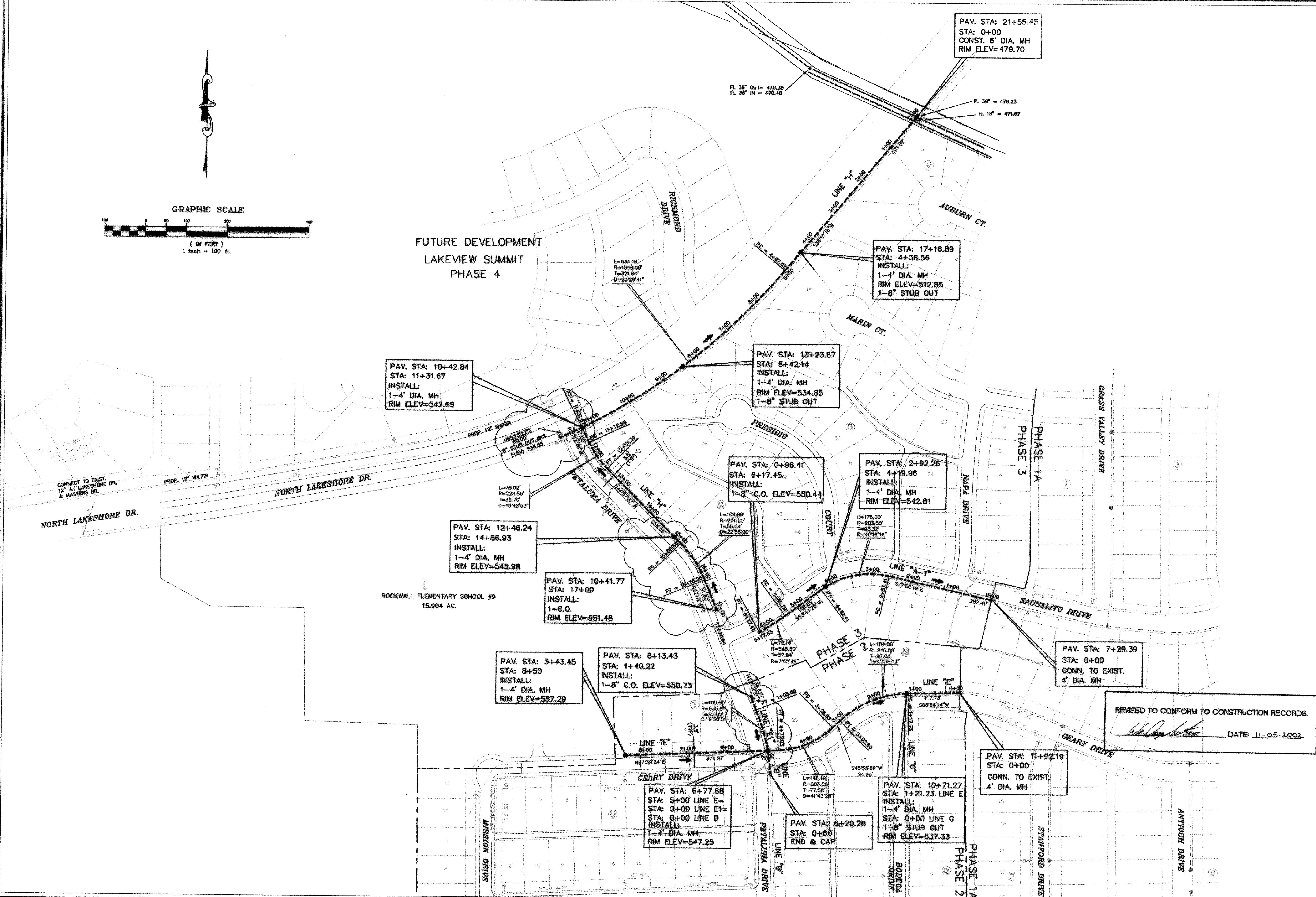
**SANITARY SEWER PLAN
 ROCKWALL ELEMENTARY SCHOOL #9 AREA
 CITY OF ROCKWALL
 ROCKWALL COUNTY, TEXAS**

REV. SEWER ALL- 10-5-01
 ADDED SERVICES REV. SEWER LN-H 11-14-01
 REV. PER CITY 12-5-01

W.L.D.
 CHECKED
 K.E.B.
 DRAWN
 6/01
 DATE
 9910-S-SEW
 PROJECT



**FUTURE DEVELOPMENT
 LAKEVIEW SUMMIT
 PHASE 4**



PAV. STA: 10+42.84
 STA: 11+31.67
 INSTALL:
 1-4' DIA. MH
 RIM ELEV=542.69

PAV. STA: 13+23.67
 STA: 8+42.14
 INSTALL:
 1-4' DIA. MH
 RIM ELEV=534.85
 1-8" STUB OUT

PAV. STA: 0+96.41
 STA: 6+17.45
 INSTALL:
 1-8" C.O. ELEV=550.44

PAV. STA: 2+92.26
 STA: 4+19.96
 INSTALL:
 1-4' DIA. MH
 RIM ELEV=542.81

PAV. STA: 12+46.24
 STA: 14+86.93
 INSTALL:
 1-4' DIA. MH
 RIM ELEV=545.98

PAV. STA: 10+41.77
 STA: 17+00
 INSTALL:
 1-C.O.
 RIM ELEV=551.48

PAV. STA: 3+43.45
 STA: 8+50
 INSTALL:
 1-4' DIA. MH
 RIM ELEV=557.29

PAV. STA: 8+13.43
 STA: 1+40.22
 INSTALL:
 1-8" C.O. ELEV=550.73

PAV. STA: 7+29.39
 STA: 0+00
 CONN. TO EXIST.
 4' DIA. MH

PAV. STA: 6+77.68
 STA: 5+00 LINE E
 STA: 0+00 LINE E1
 INSTALL:
 1-4' DIA. MH
 RIM ELEV=547.25

PAV. STA: 6+20.28
 STA: 0+60
 END & CAP

PAV. STA: 10+71.27
 STA: 1+21.23 LINE E
 INSTALL:
 1-4' DIA. MH
 STA: 0+00 LINE G
 1-8" STUB OUT
 RIM ELEV=537.33

PAV. STA: 11+92.19
 STA: 0+00
 CONN. TO EXIST.
 4' DIA. MH

REVISED TO CONFORM TO CONSTRUCTION RECORDS.
 DATE: 11-05-2002