

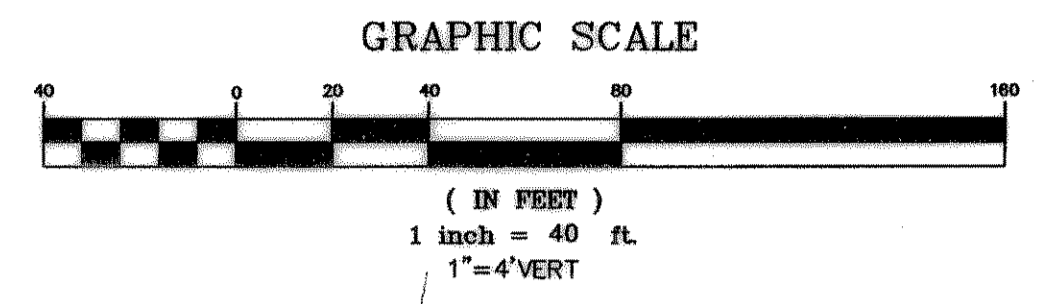
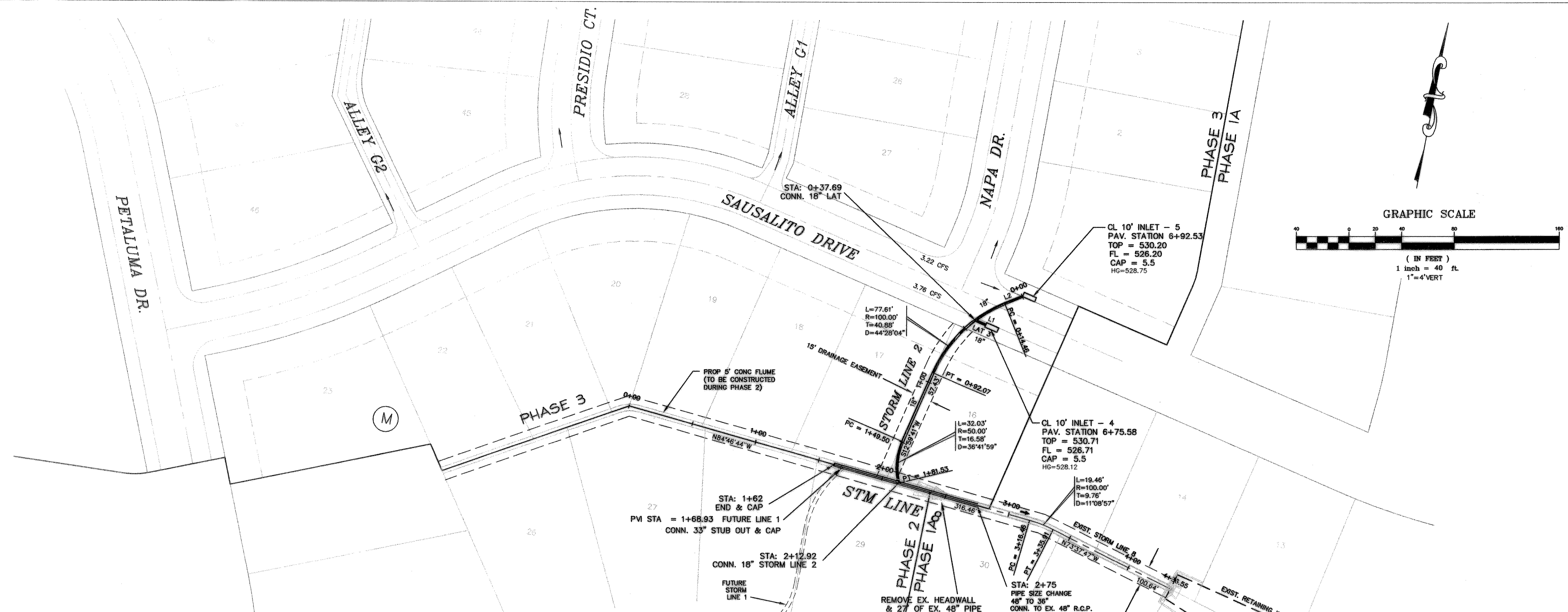
THE SEAL APPEARING ON THIS DOCUMENT WAS AUTHORIZED BY W.L. DOUPHRATE A TEXAS P.E. NO. 60102 ON 11/2/02

DOUPHRATE & ASSOCIATES, INC.
 ENGINEERING - PROJECT MANAGEMENT - SURVEYING
 2235 RIDGE RD., # 200 ROCKWALL, TEXAS 75087
 PHONE: (972)771-9004 FAX: (972)771-9006

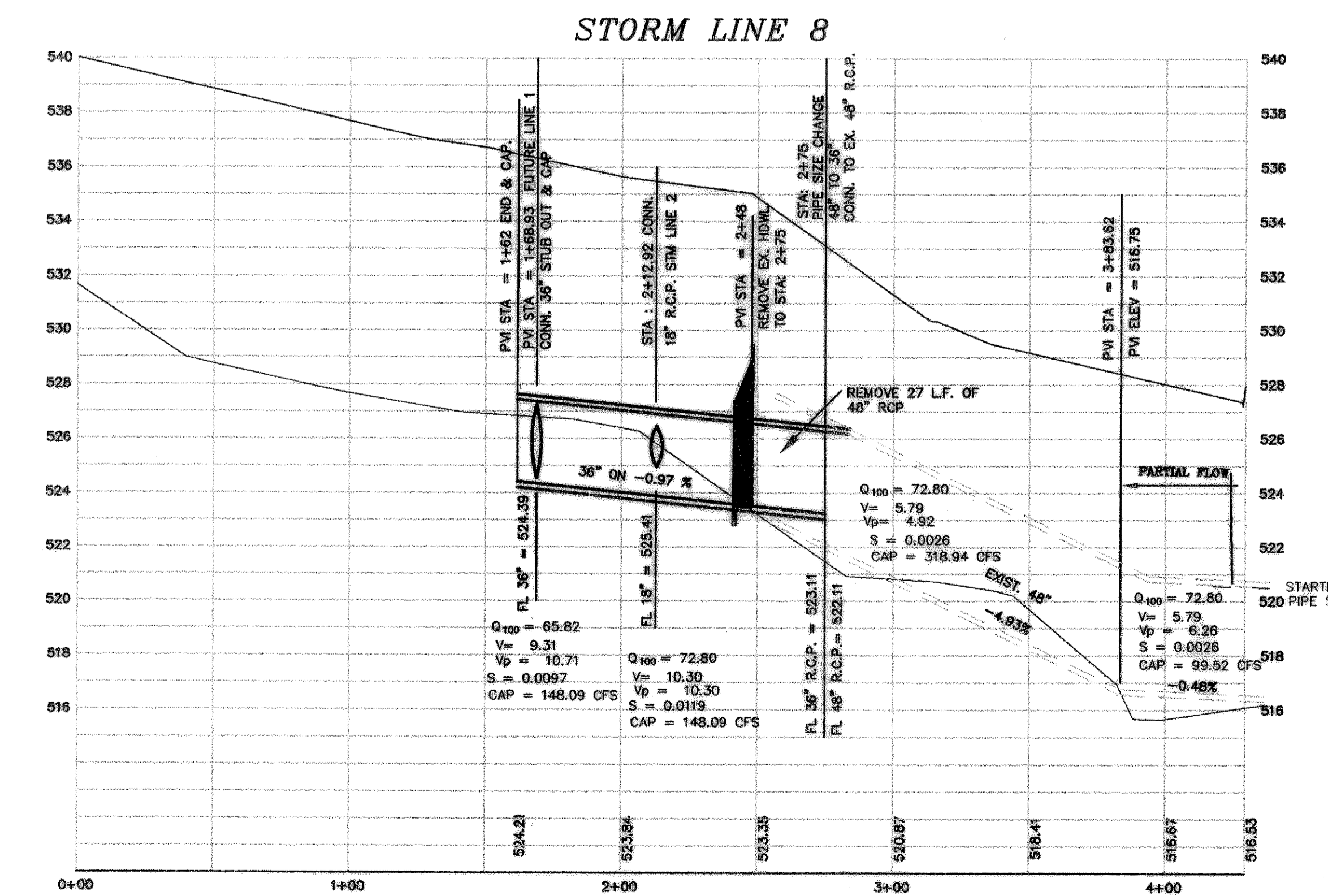
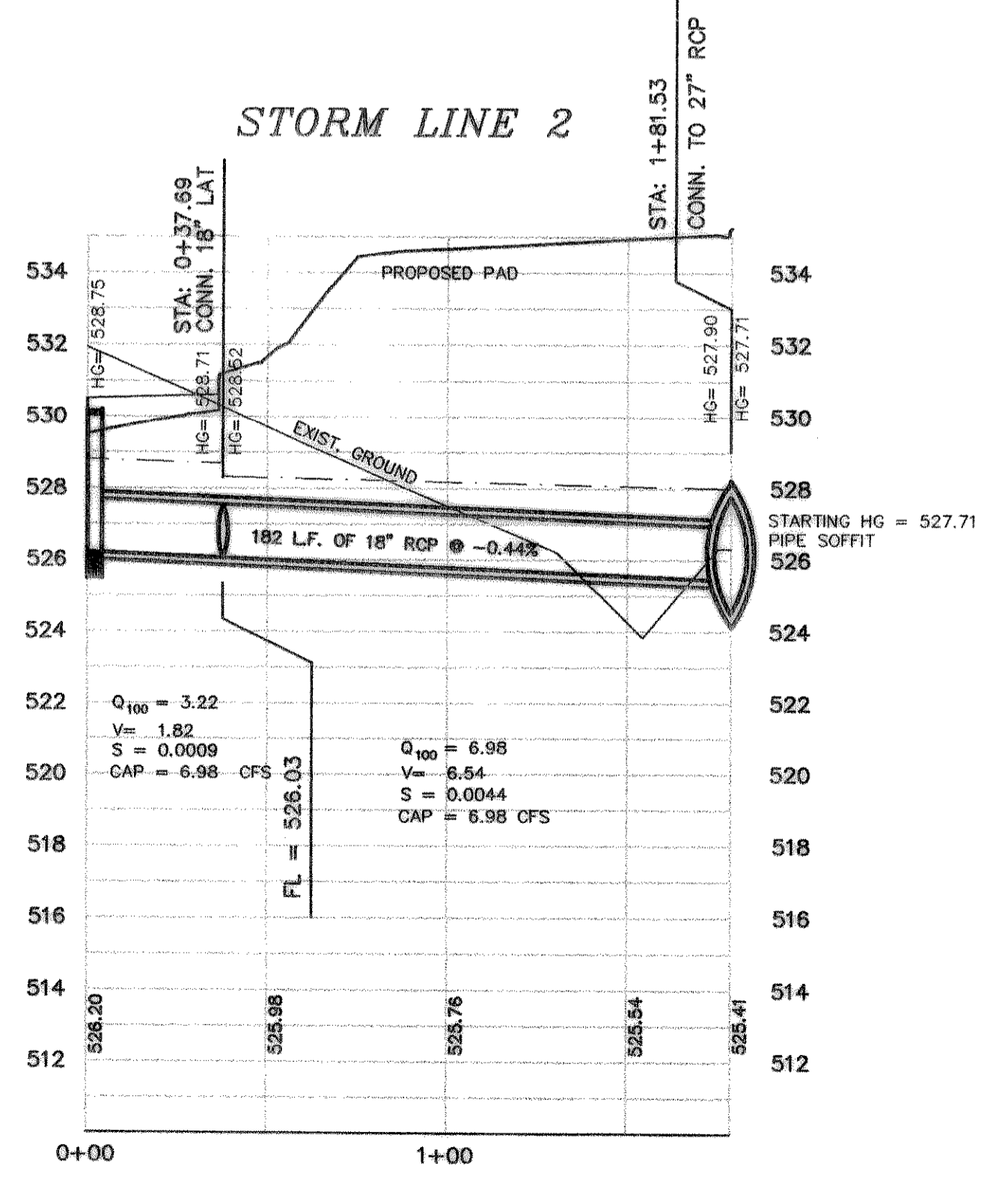
STORM SEWER PLAN & PROFILE
LINE 2
 ROCKWALL ELEMENTARY SCHOOL #9 AREA
 CITY OF ROCKWALL, ROCKWALL COUNTY, TEXAS

REVISION:
 - REVISIONS PER CITY COMMENTS 6/7/01
 - REVISIONS PER CITY COMMENTS 6/8/01
 - REVISIONS PER CITY COMMENTS 10/29/01
 - REVISIONS PER CITY COMMENTS 12/9/01

W.L.D.
 CHECKED
 K.E.B.
 DRAWN
 6/01
 DATE
 9919-S-STM2
 PROJECT



From	To	Length	Box Height	DESIGN Q100	Pipe Size (in)	CAP Q100	FULL V	PARTIAL V	PARTIAL FLOW	CHT. No.	Kj	Flow R(ft)	R ^{2/3}	Flow Area	FULL S	DESIGN S	HGL Rise	HGL Number
STM 2							5.79				0.6000						0.4743	527.71
Junction Loss	178.69	37.59	141.1	6.98	18	6.97	3.95	5.66	1.00	0.77	1.0000	0.3750	0.5200	1.7671	0.0044	0.0044	0.6230	528.52
Junction Loss	37.59	0	37.59	3.22	18	6.97	1.82	1.40	0.46	0.77	0.3750	0.5200	1.7671	0.0009	0.0044	0.0353	528.75	



LINE	LENGTH	BEARING
L1	8.70	N77°23'02"W
L2	14.48	S57°27'45"W

REVISED TO CONFORM TO CONSTRUCTION RECORDS.
W.L. Douphrate DATE: 11-05-2002

BENCHMARK:
 BRASS CAP MONUMENT NO. 10 SET IN CONCRETE IN THE CENTER OF GRASS MEDIAN IN MASTERS DRIVE BETWEEN NORTH LAKESHORE & SHORES BLVD. N 7032464.6317, E 2589554.1518
 ELEV. = 524.62