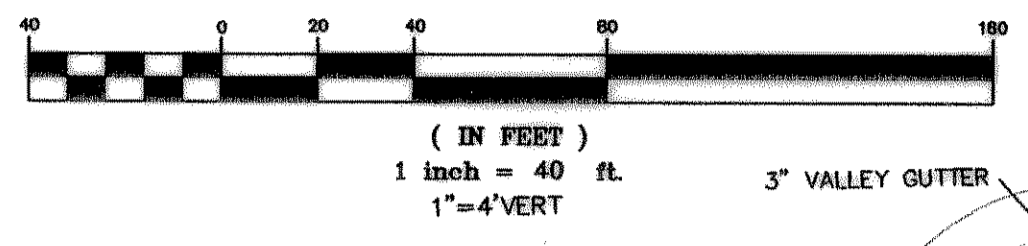


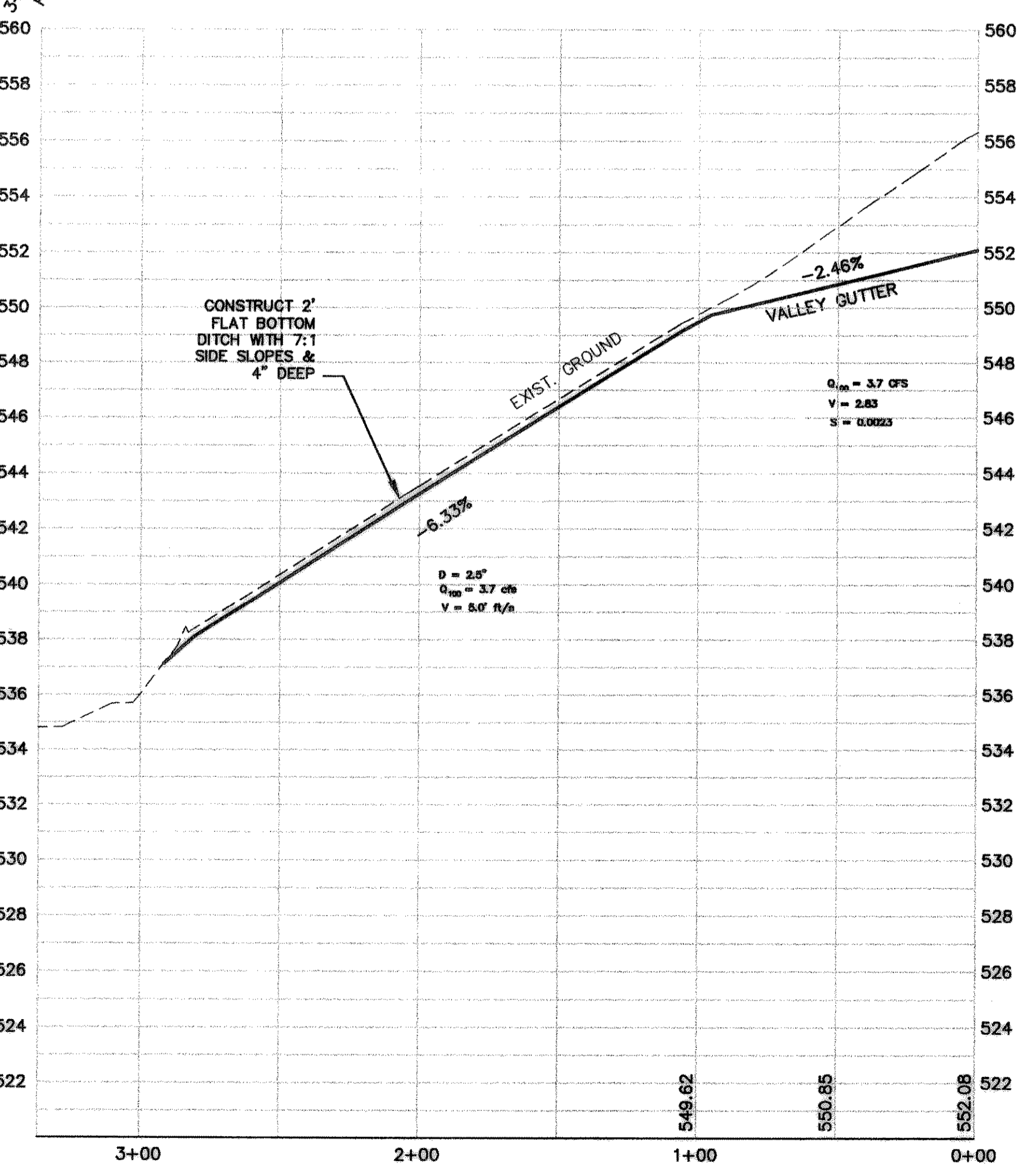
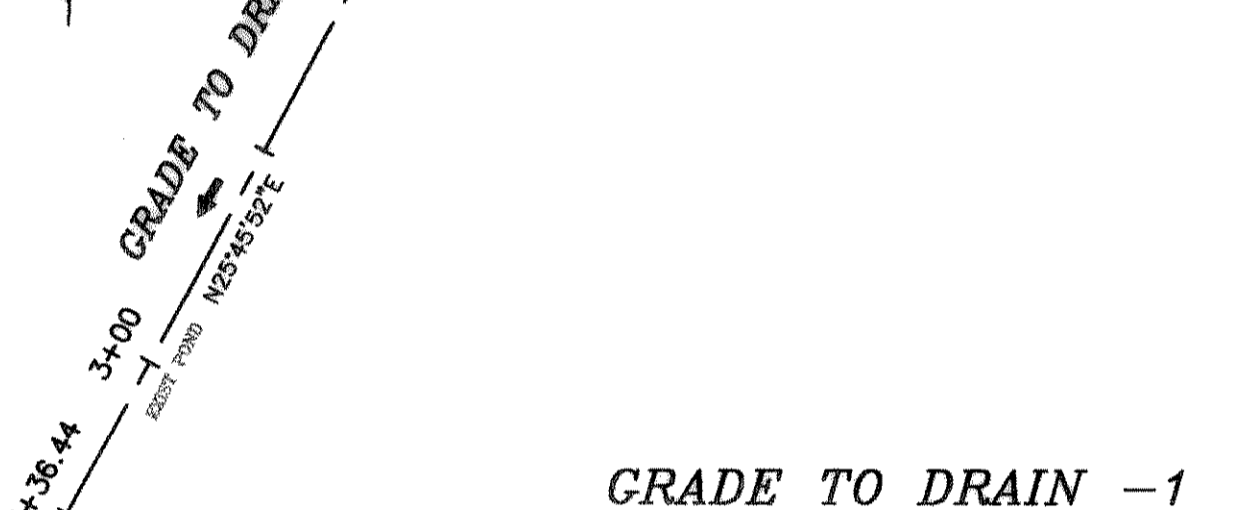
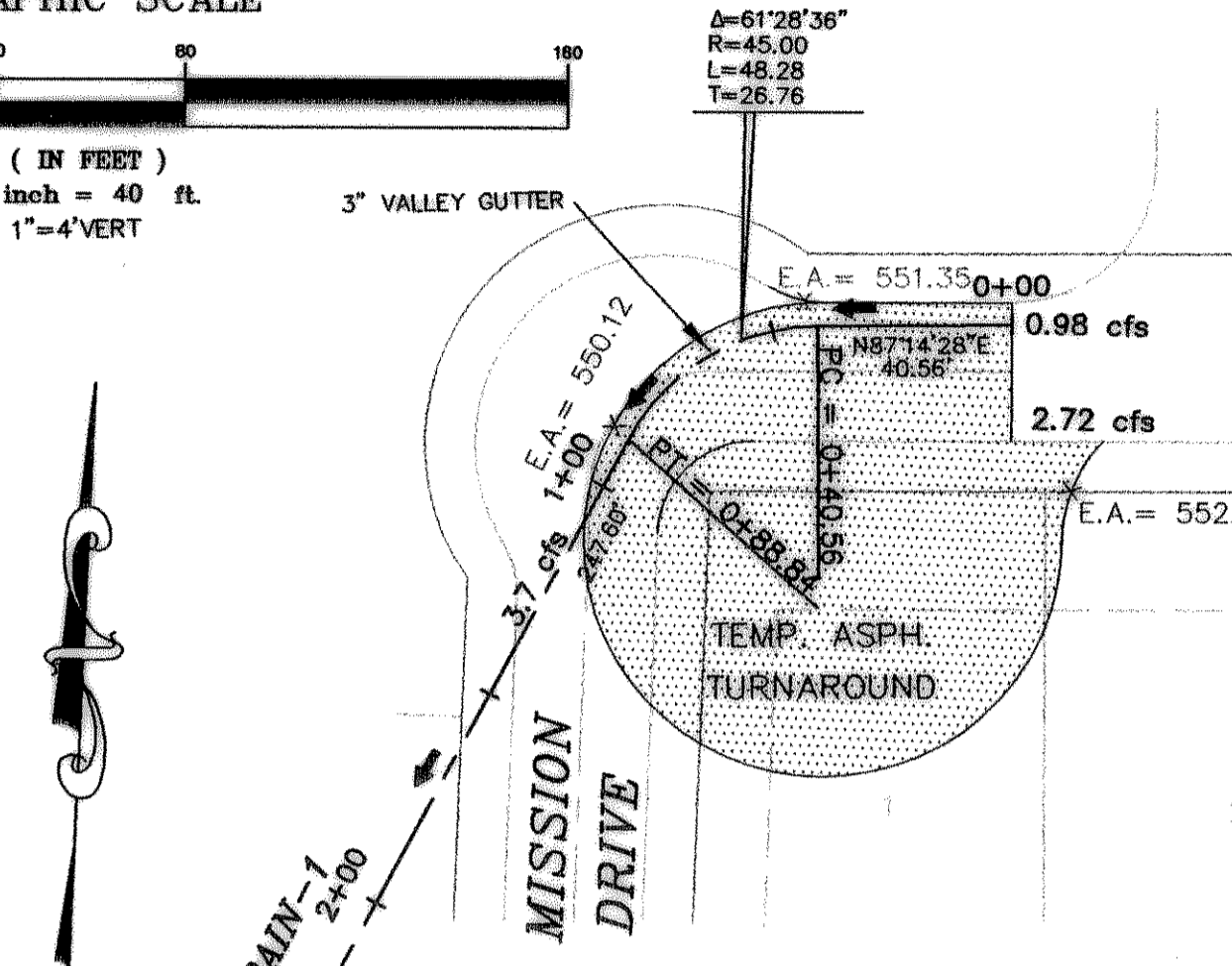
LINE	LENGTH	BEARING
L1	16.74	N27°39'24"E
L2	16.74	S32°20'36"E
L3	57.16	N27°39'24"E
L4	23.06	N52°20'36"W
L5	101.59	N87°39'24"E
L6	24.23	N45°55'56"E

CURVE	LENGTH	RADIUS	DELTA	TANGENT	CH DIST	CH BRG
C1	163.85	225.00	41°43'28"	85.75	160.25	N88°47'40"E

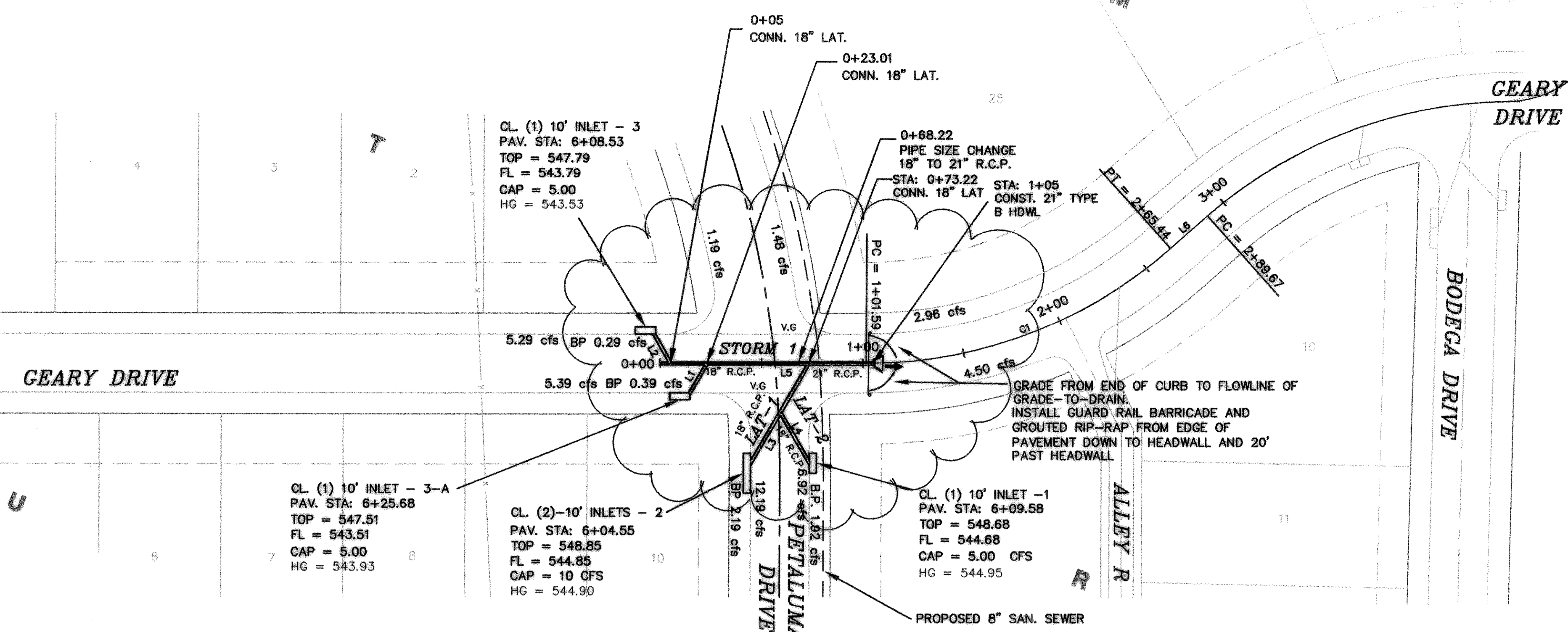
GRAPHIC SCALE



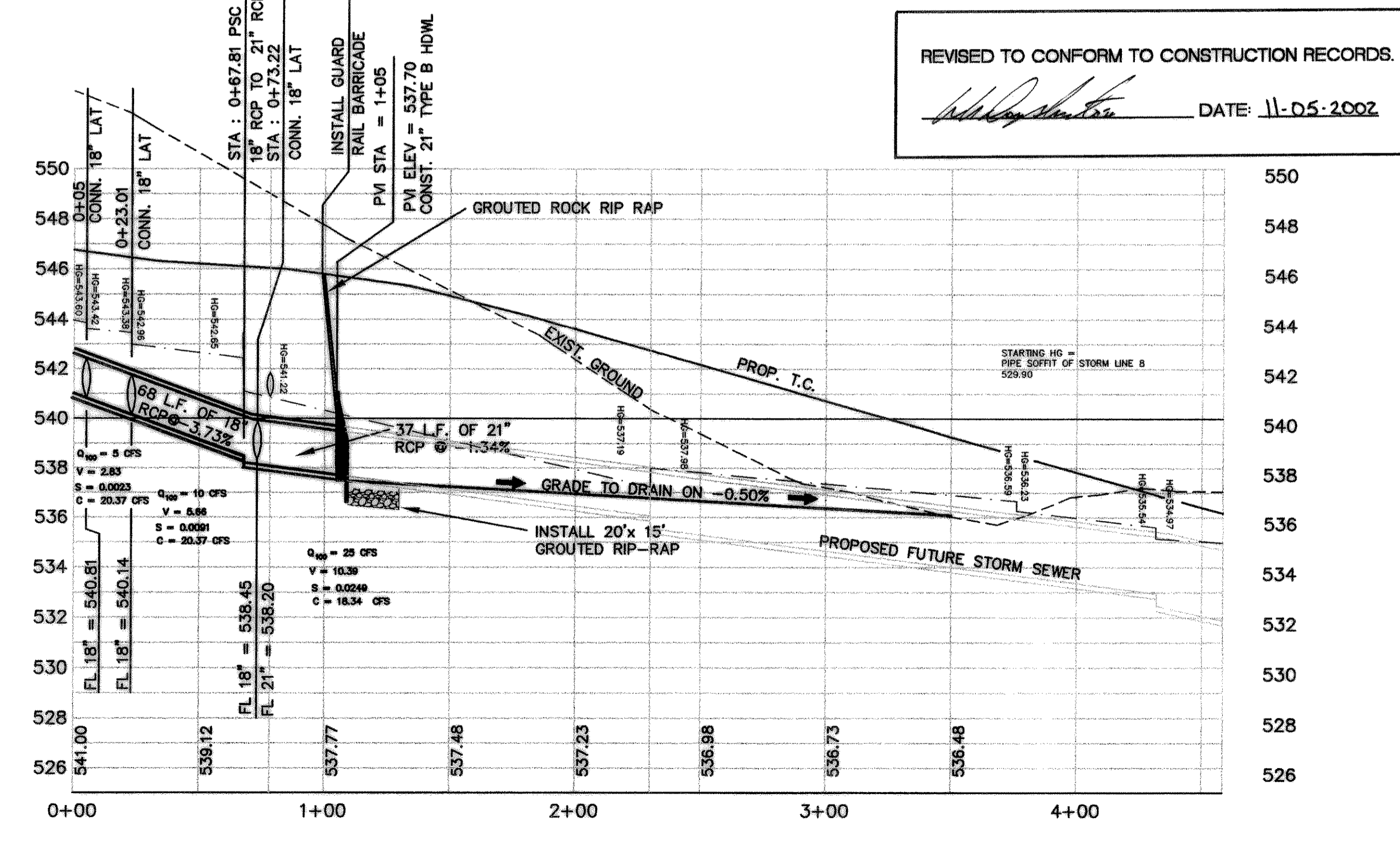
(IN FEET)
1 inch = 40 ft.
1"=4"VERT



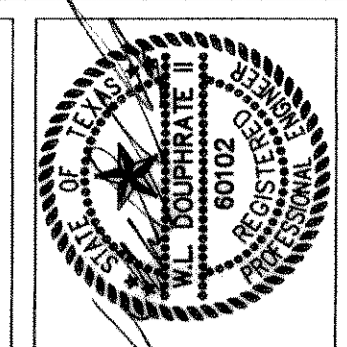
BENCHMARK:
BRASS CAP MONUMENT NO. 10 SET IN CONCRETE IN THE CENTER OF GRASS MEDIAN IN MASTERS DRIVE BETWEEN NORTH LAKESHORE & SHORES BLVD. N 7032464.6317, E 2589554.1518
ELEV. = 524.62



From	To	Box Length	Box Height	DESIGN Width	DESIGN Q100	PIPE Size (in)	CAP Q100	FULL V	PARTIAL V	PARTIAL FLOW %	FLOW CHT. No	Flow R(f)	Flow R^2/3	Flow Area	DESIGN S	DESIGN S	HGL Rise	HGL Number	
STM-1																		529.90	Starting
	626.65	496.98	129.67	65.82	33	33	77.55	11.08	12.19	0.85	1.10	0.6875	0.7790	5.9396	0.0155	0.0215	2.0085	531.91	
Junction Loss												0.4000						1.2618	533.17
	496.98	487.12	9.86	60.53	33	33	77.55	10.19	11.01	0.78	1.08	0.6875	0.7790	5.9396	0.0131	0.0215	1.1292	533.30	
Junction Loss												0.4000						1.1373	534.44
	487.12	432	55.12	51.96	33	33	77.55	8.75	9.27	0.67	1.06	0.6875	0.7790	5.9396	0.0097	0.0215	0.5321	534.97	
Junction Loss												0.5000						0.5708	535.54
	432.00	379.2	52.8	35.46	27	27	35.18	8.92	10.26	1.01	1.15	0.5625	0.6814	3.9761	0.0131	0.0129	0.6922	536.23	
Junction Loss												1.0000						0.3534	536.59
	379.20	230	149.2	29.96	27	27	35.18	7.54	8.29	0.85	1.10	0.5625	0.6814	3.9761	0.0094	0.0129	1.3962	537.98	
Junction Loss												1.0000						-0.7958	537.19
	230.00	67.81	162.19	25	21	21	18.34	10.39	10.39	1.36	1.00	0.4375	0.5763	2.4053	0.0249	0.0134	4.0375	541.22	
Junction Loss												0.7000						1.3294	542.56
	67.81	23.01	44.8	10	18	18	20.37	5.66	5.66	0.49	1.00	0.3750	0.5200	1.7671	0.0091	0.0376	0.4060	542.96	
Junction Loss												0.6000						0.4227	543.38
	23.01	5	18.01	5	18	18	20.37	2.83	2.41	0.25	0.85	0.3750	0.5200	1.7671	0.0023	0.0376	0.0408	543.42	
Junction Loss												0.4000						0.0746	543.50
	5.00	-11.71	16.71	5	18	18	20.37	2.83	1.81	0.25	0.64	0.3750	0.5200	1.7671	0.0023	0.0376	0.0379	543.53	AT INLET = 547.71



REVISED TO CONFORM TO CONSTRUCTION RECORDS.
[Signature] DATE: 11-05-2002



THE SEAL APPEARING ON THIS DOCUMENT WAS AUTHORIZED BY ALL DOWNGRADE 1 TEXAS P.E. NO. 80102 ON 12/19/12

DOUPHRAITE & ASSOCIATES, INC.
ENGINEERING - PROJECT MANAGEMENT - SURVEYING
2235 RIDGE RD., # 200 ROCKWALL, TEXAS 75087
PHONE: (972)771-8004 FAX: (972)771-8005

STORM SEWER PLAN & PROFILE
LINE 1 & GRADE TO DRAIN -1
ROCKWALL ELEMENTARY SCHOOL #9 AREA
CITY OF ROCKWALL, ROCKWALL COUNTY, TEXAS

REVISION:
- REVISIONS PER CITY COMMENTS 8/7/01
- REVISIONS PER CITY COMMENTS 8/8/01
- REVISIONS PER CITY COMMENTS 10/26/01

W.L.D. CHECKED
K.E.B. DRAWN
6/01 DATE
9919-S-STM1 PROJECT
15 OF