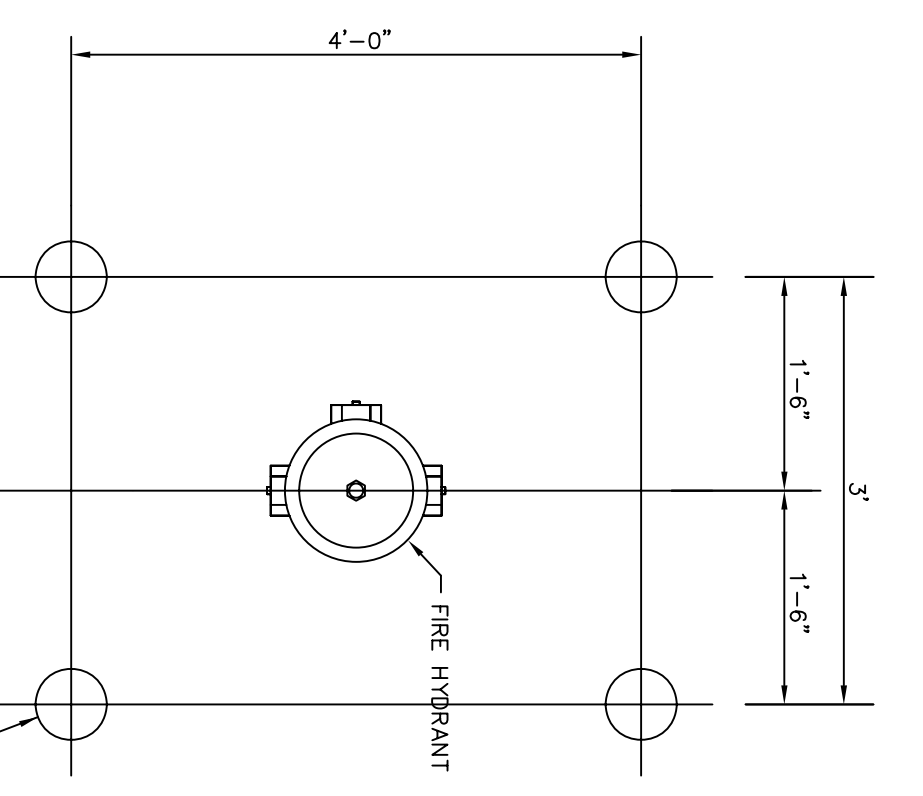


UTILITY EXCAVATION & EMBEDMENT DETAIL
N.T.S.



FIRE HYDRANT
GUARD POST DETAIL
N.T.S.

6" STEEL PIPE W/CONCRETE TILL (PAINT) TO BE CASED IN 18" PER TO DEPTH OF 1'-0" BELOW BOTTOM OF PIPE USE 2" MAX THRU PIPE AND CONCRETE TIEBARS TO BE PAINTED

NOTE:
CONNECT ALL EXISTING METERS TO PROPOSED WATER LINE

8" WATER LINE STA 11+00 - 17+66.08

DOBBS WATER LINE
ROCKWALL, TEXAS
CITY OF ROCKWALL
"THE NEW HORIZON"

DESIGNED:	B.W.H.	THE SEAL APPEARING ON THIS DOCUMENT WAS AUTHORIZED BY	CHARLES A. TODD
DRAWN:	ACAD	NO. 35647 ON	55647
JOB NO.		DATE:	
		SHEET NO.	

- NOTES:
- PAYMENT TO THE CONTRACTOR FOR REPLACEMENT OF PAVEMENT AND/OR DRIVEWAYS WILL BE BASED ON ACTUAL MEASUREMENTS UP TO A MAXIMUM WIDTH EQUAL TO THE CONTRACTOR.
 - WHEN REMOVING CONCRETE PAVEMENT, THE CONTRACTOR SHALL ENSURE TO LIMIT DAMAGE TO EXISTING REINFORCEMENT SO IT MAY BE REUSED IN THE REPLACEMENT OPERATIONS. IF ORIGINAL REINFORCEMENT IS SOLELY ON BRACKEN, REINFORCEMENT BARS OF THE SAME SIZE SHALL BE INSTALLED BY DRINKING AND CONCRETE AS DIRECTED BY THE OWNER.