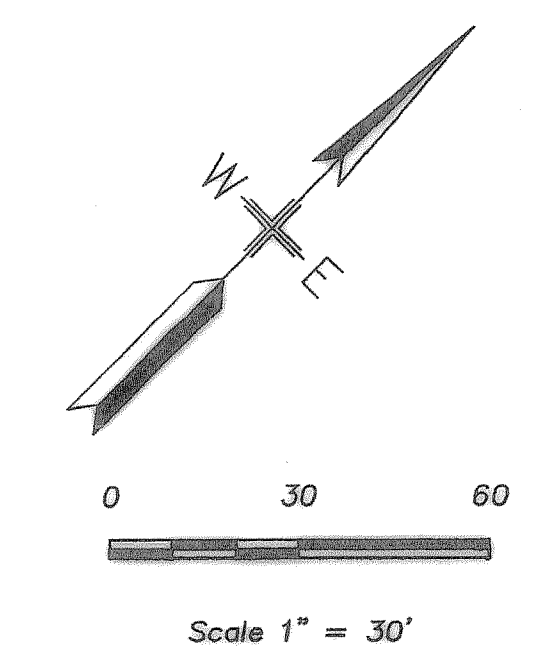
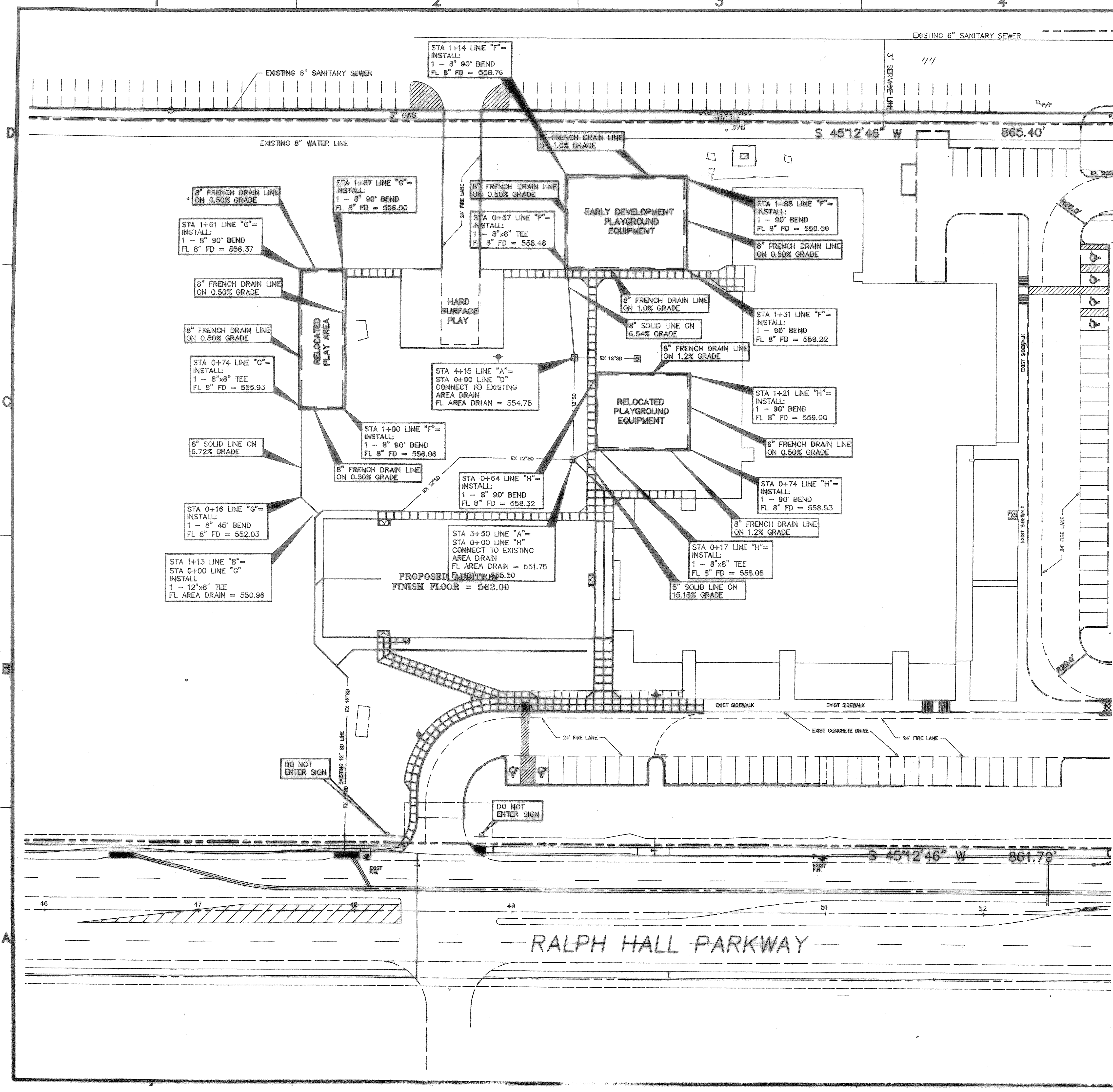


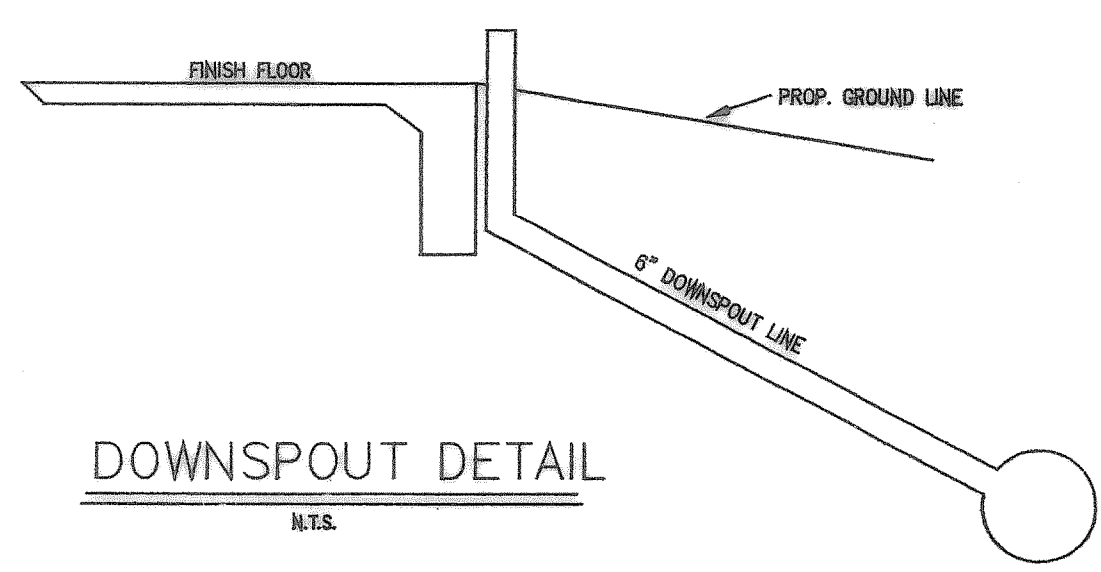
Nov 23, 2004 - 8:42am User: Rick
 \\Robert-wp\C-DRIVE\ROCKKISD\Rockel\BID-SET\ADDITION\BIDSET\ROCHELLE-ENG-ADD1-REV2.dwg
 11/23/2004 8:42:37 AM, RICK



- GENERAL STORM SEWER NOTES:**
1. ALL CONSTRUCTION TO BE IN ACCORDANCE WITH THESE PLANS AND CITY OF ROCKWALL STANDARDS AND SPECIFICATIONS.
 2. PRIOR TO STARTING CONSTRUCTION, THE CONTRACTOR SHALL MAKE CERTAIN THAT ALL REQUIRED PERMITS AND APPROVALS HAVE BEEN OBTAINED. NO CONSTRUCTION OR FABRICATION SHALL BEGIN UNTIL THE CONTRACTOR HAS RECEIVED AND THOROUGHLY REVIEWED ALL PLANS AND OTHER DOCUMENTS APPROVED BY ALL OF THE PERMITTING AUTHORITIES.
 3. ALL WORK SHALL BE PERFORMED IN ACCORDANCE WITH THESE PLANS AND SPECIFICATIONS AND THE REQUIREMENTS AND STANDARDS OF THE LOCAL GOVERNING AUTHORITY.
 4. IN THE EVENT AN ITEM IS NOT COVERED IN THE CITY OF ROCKWALL SPECIFICATIONS, THE ENGINEER'S DECISION SHALL APPLY.
 5. BARRICADING, TRAFFIC CONTROL, AND PROJECT SIGNS SHALL CONFORM TO "STATE DEPARTMENT OF HIGHWAYS AND PUBLIC TRANSPORTATION BARRICADING AND CONSTRUCTION STANDARDS".
 6. THE GENERAL CONTRACTOR AND ALL SUB-CONTRACTORS SHALL VERIFY THE SUITABILITY OF ALL EXISTING AND PROPOSED SITE CONDITIONS INCLUDING GRADES AND DIMENSIONS BEFORE COMMENCEMENT OF ANY CONSTRUCTION. IN THE EVENT OF ANY CONFLICT AND PRIOR TO COMMENCEMENT OF ANY CONSTRUCTION, IMMEDIATELY NOTIFY ENGINEER. MINOR ADJUSTMENTS OF FINISH GRADE TO ACCOMPLISH SPOT DRAINAGE ARE ACCEPTABLE, IF NECESSARY, UPON PRIOR APPROVAL OF ENGINEER. PAVING INSTALLED SHALL "FLUSH OUT" AT ANY JUNCTURE WITH EXISTING PAVING.
 7. THE LOCATIONS OF UNDERGROUND UTILITIES SHOWN ON THIS PLAN ARE BASED ON FIELD SURVEYS AND LOCAL UTILITY COMPANY RECORDS. IT SHALL BE THE CONTRACTOR'S FULL RESPONSIBILITY TO CONTACT THE VARIOUS UTILITY COMPANIES TO LOCATE THEIR UTILITIES PRIOR TO STARTING CONSTRUCTION.
 8. CONTRACTOR SHALL VERIFY ALL EXISTING INVERTS, RIM ELEVATIONS AND SIZES PRIOR TO CONSTRUCTION.
 9. ALL PVC/HDEP PIPE SHALL BE SCH 40 SDR 35, ADS, OR APPROVED EQUAL.
 10. ALL PLAY GROUND AREAS MUST HAVE A WEED BARRIER FABRIC WITH A MINIMUM 8" WIDE ROLL, 4 OZ. PER S.Y. POLYPROPYLENE, 20 MILS. THICK, PERM. RATE OF 10 GAL. PER MINUTE WITH A 5 YEAR GUARANTEE. (DeWitt OR EQUAL)

BENCH MARKS:

FINISH FLOOR OF EXISTING BUILDING @ NORTH DOUBLE DOORS.
ASSUMED 562.00



NOTE:

1. AT ALL LOCATIONS OF DOWNSPOUTS (D.S.) A 6" PVC PIPE IS TO BE INSTALLED FROM THE 12" PVC LINE TO THE FOUNDATION AND EXTEND UP ABOVE THE FINISH FLOOR ELEV. SEE ARCH. PLAN FOR THE CONNECTION DETAIL AND THE ROOF PLAN FOR ACTUAL DOWNSPOUT LOCATION.

APPROVED FOR
CONSTRUCTION
DEC 2 2 2004
City of Rockwall Engineering Dept.
City Engineer: _____

STORM SEWER PLAN
SCALE: 1" = 30'

GLENN ENGINEERING
PHONE 972-717-5151 FAX 972-717-2176
105 DECKER COURT - SUITE 910 IRVING, TEXAS 75062

SHW Group, L
Architects + Engineers + Planners

Consultants:

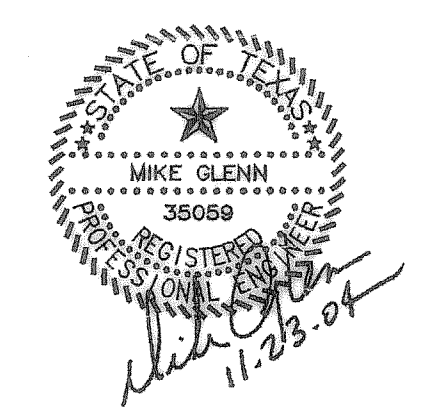
CIVIL:
GLENN ENGINEERING CORP.

STRUCTURAL:
SHW GROUP, LLP

MEP:
ESTES MCCLURE AND ASSOCIATES

LANDSCAPING:
GRUBBS RAMSEY

Final Plans for Bidding and Constructio



Rockwall Independent School District

AMANDA ROCHELL ELEMENTARY ADDITIONS AND RENOVATIONS

ROCKWALL, TEXAS

Project Number: 1441.04.018
 Drawing Date: 08/31/2004
 Drawn: R.HOWMAN
 Checked: RAH
 Scale: AS SHOWN
 ACAD File: ROCHELLE-ENG-ADD1-REV2.dwg
 © 2004 SHW Group, LLP

Revisions:

1	10/12/2004	CITY COMMENTS
2	11/8/2004	CITY COMMENTS
3	11/23/2004	CITY COMMENTS

Sheet Title:
STORM PLAN

These Drawings have been modified to conform to the Construction Records.
 Glenn Engineering Corporation
 By: _____ Date: 11/23/04

CU1.03