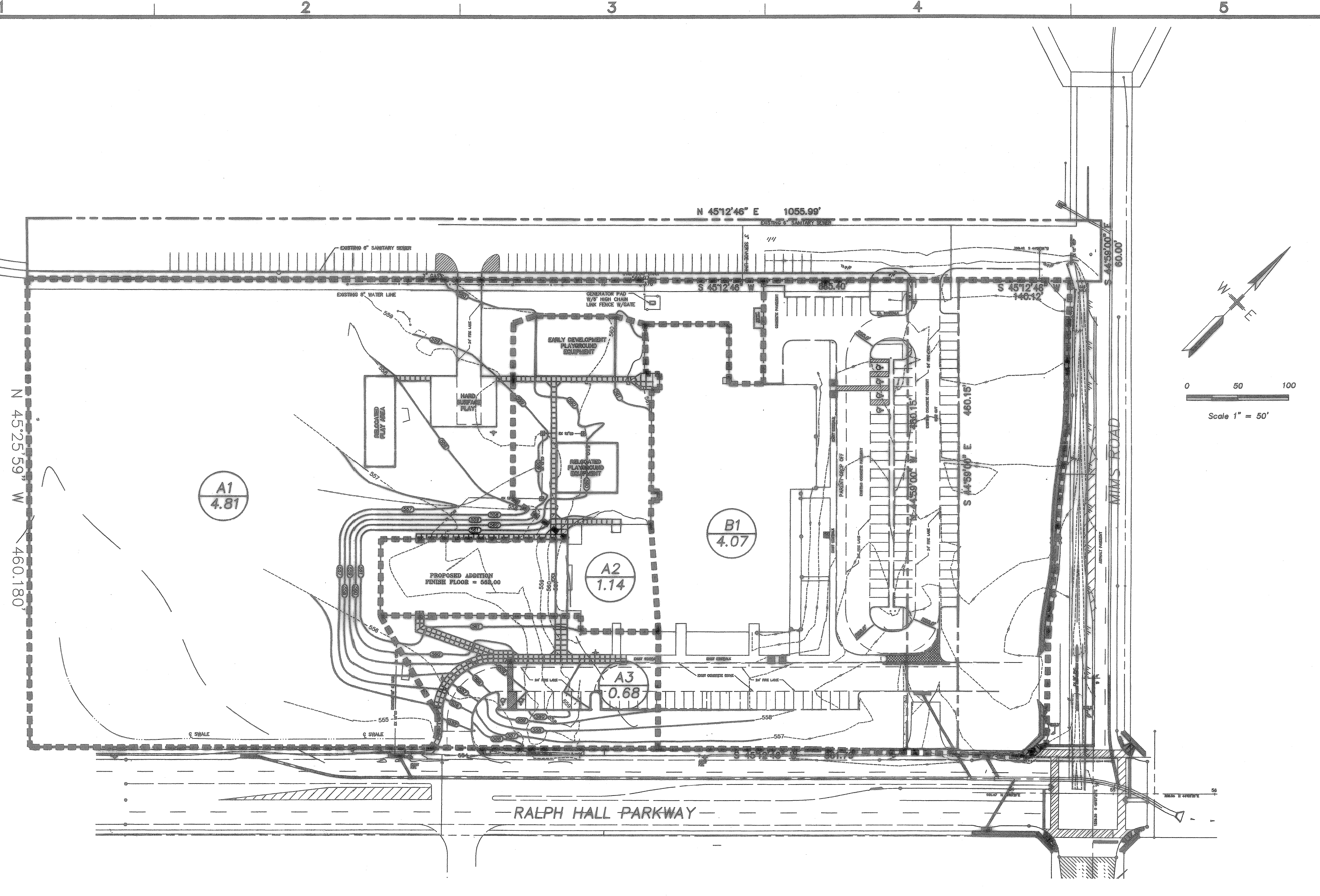


Nov 23, 2004 - 9:29am User: Rick
 \\Robert-yp\C-DRIVE\ROCK\ISD\Roche\BID-SET\ADDITION\BIDSET\ROCHELLE-ENG-ADD1-REV2.dwg



STORM WATER RUNOFF CALCULATIONS

AREA NO.	DRAINAGE AREA "A" (ACRES)	TIME OF CONCENTRATION (IN MINUTES)	RUNOFF COEFFICIENT "C"	K	INTENSITY "I" 1.00" (IN./HR.)	DESIGN FLOW "Q" 100'	REMARKS
A1	4.81	10	0.80	1.0	9.8	37.71	TO RALPH HALL PKWY IN SWALE
A2	1.14	10	0.90	1.0	9.8	10.05	TO INLET IN 12" PIPE
A3	0.68	10	0.90	1.0	9.8	6.00	OUT DRIVE APPROACH
B1	4.07	10	0.90	1.0	9.8	35.90	TO INLET

APPROVED FOR CONSTRUCTION
 DEC 2 2 2004
 City of Rockwall Engineering Dept.
 City Engineer: _____

DRAINAGE AREA MAP
 SCALE: 1" = 50'

GLENN ENGINEERING
 PHONE 972-717-5151 FAX 972-717-2176
 105 DECKER COURT - SUITE 910 IRVING, TEXAS 75062

SHW Group, LI
 Architects + Engineers + Planners

Consultants:
 CIVIL: GLENN ENGINEERING CORP.
 STRUCTURAL: SHW GROUP, LLP
 MEP: ESTES MCCLURE AND ASSOCIATES
 LANDSCAPING: GRUBBS RAMSEY

Final Plans for Bidding and Construction



Rockwall Independent School District

AMANDA ROCHELL ELEMENTARY ADDITIONS AND RENOVATIONS

ROCKWALL, TEXAS

Project Number: 1441.04.01
 Drawing Date: 08/31/2004
 Drawn: R.HOWMAI
 Checked: RAI
 Scale: AS SHOWN
 ACAD File: ROCHELLE-ENG-ADD1-REV:
 © 2004 SHW Group, LLP

Revisions:
 1 10/12/2004 CITY COMMENTS
 2 11/8/2004 CITY COMMENTS
 3 11/23/2004 CITY COMMENTS

Sheet Title:
DRAINAGE AREA MAP

These Drawings have been modified to conform to the Construction Records.
 Glenn Engineering Corporation
 By: _____ Date: 11/23/04

CG1.05