

SHW GROUP
ARCHITECTS | ENGINEERS | PLANNERS

CIVIL:
GLENN ENGINEERING, INC.

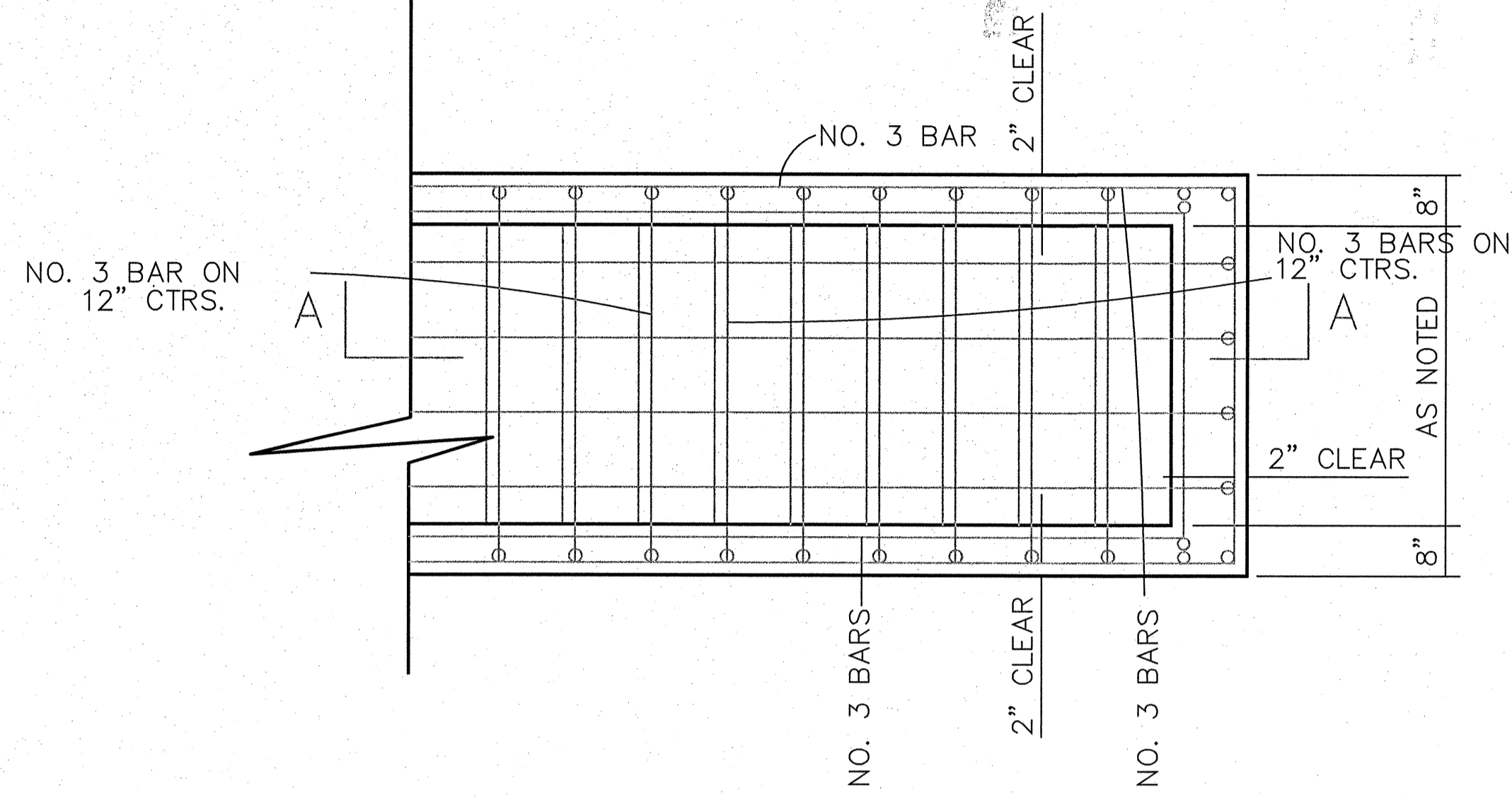
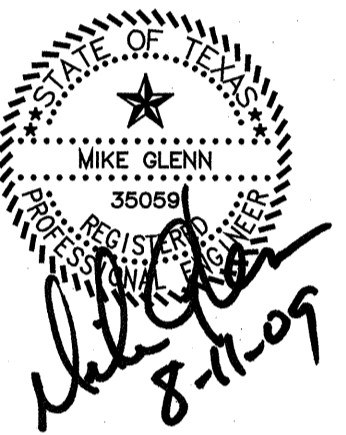
STRUCTURAL:
SHW GROUP LLP

MEP:
ESTES, McCLURE & ASSOCIATES

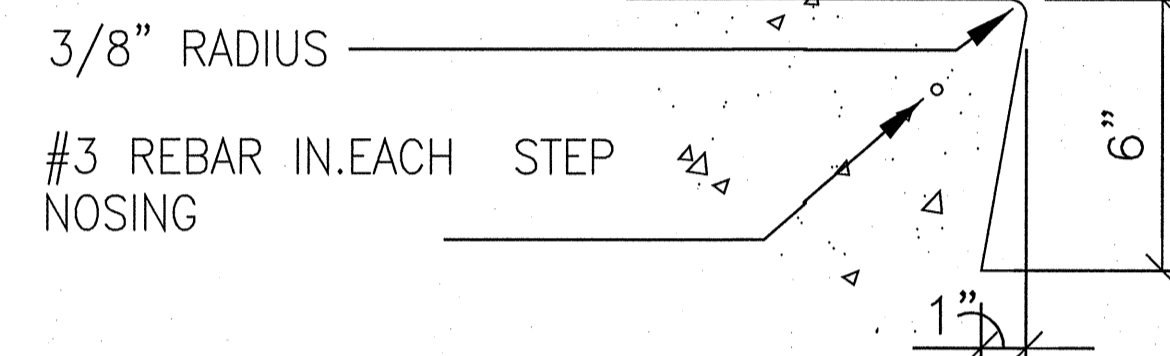
LANDSCAPING:
RAMSEY LANDSCAPE ARCHITECTS

FOOD SERVICE:
JMK DESIGNS

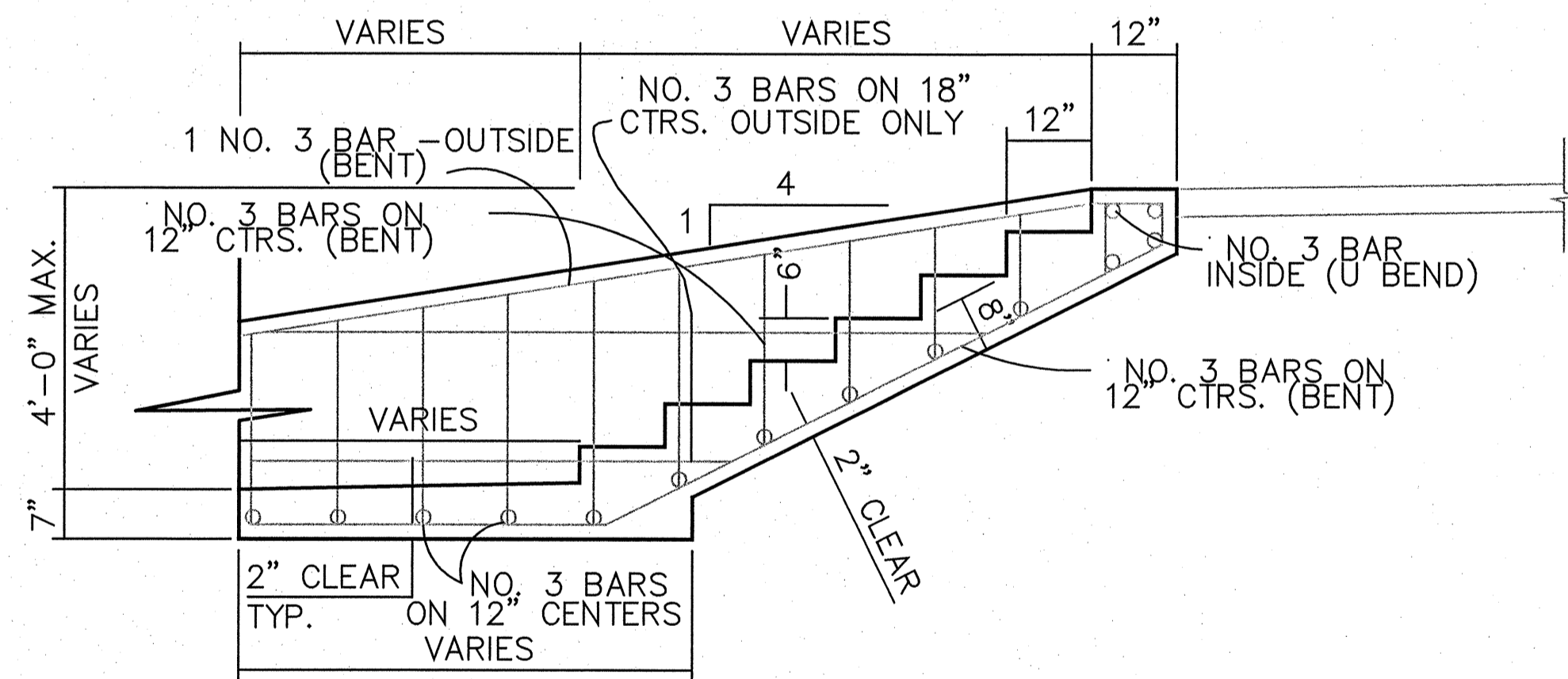
FINAL PLANS FOR PERMITTING AND CONSTRUCTION



PLAN - TYPE 2



STEP NOSING DETAIL



SECTION A-A
TYPE 2 STEPS

GENERAL NOTES

1. CONCRETE FOR STEPS TO BE CLASS A CONCRETE.
2. BARS SHALL CONFORM TO SECTION 2.2.6 OF THE NCTCOG SPECIFICATIONS.
3. BAR LAPS SHALL BE 30 DIAMETERS.
4. ALL EXPOSED SURFACES EXCEPT STEP TREADS AND WALK SHALL RECEIVE A RUBBED FINISH.
5. STEP TREADS AND WALK SHALL RECEIVE A NON-SKID WOOD FLOAT FINISH.
6. WIDTH OF TREAD AND/OR DEPTH OF RISE OF ALL STEPS MAY BE MODIFIED IF SO INDICATED ON THE PLANS.
7. EXPANSION JOINTS SHALL BE COMPOSED OF 1/2" PREMOLDED JOINT FILLER.

GENERAL GRADING AND DRAINAGE NOTES

1. ALL CONSTRUCTION TO BE IN ACCORDANCE WITH THESE PLANS AND LOCAL GOVERNING AUTHORITIES STANDARDS AND SPECIFICATIONS.

RECORD DRAWING
This is to certify that changes and corrections have been made to conform to the contractor's record of this project.

Signed: *[Signature]* Date: 8-11-09
Glenn Engineering Corporation

STAIR DETAILS
SCALE: AS SHOWN

Rockwall ISD

**ROCKWALL
HIGH SCHOOL
ROCKWALL, TEXAS**

CHECKED:
File:
© 2008 SHW Group LLP

ISSUE: 5/27/2008

Revisions:

1	ADDENDA #1 - MARCH 17, 2008
2	ADDENDA #2 - MARCH 25, 2008
3	ADDENDA #3 - APRIL 1, 2008
4	CITY REVIEW COMMENTS - APRIL 22, 2008
5	CITY REVIEW COMMENTS - SEPT. 09, 2008
6	RECORD SET - MARCH 04, 2009
7	REVISED RECORD SET - JUNE 04, 2009

Sheet Title:
**STAIR
DETAILS**

CP 1.04

SHW Project: 4107.049.00