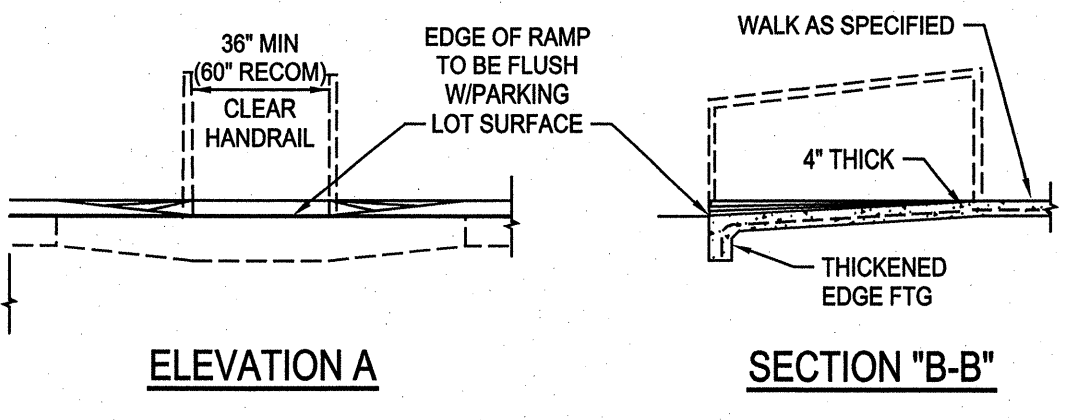
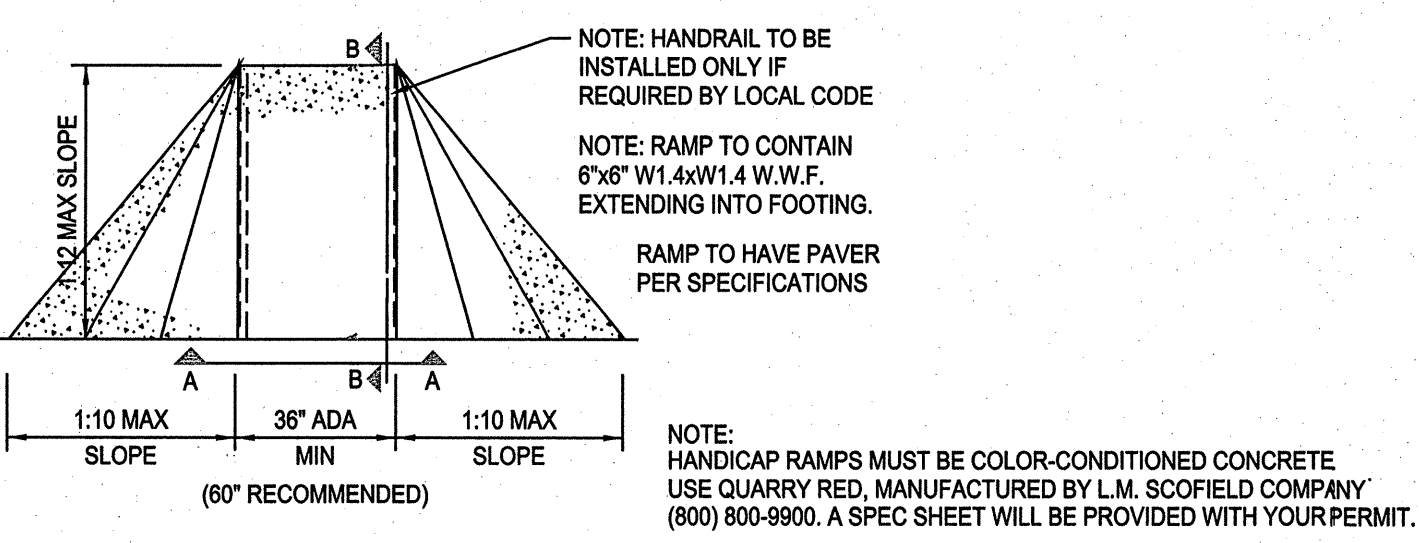


NOTES:
 1. AT MARKINGS THE CONCRETE SHALL BE A TOOLED JOINT 3/4" DEEP, FOLLOWED BY GROOVING TOOL. STRENGTH SHALL BE 3000 p.s.i. WITH #3 BARS @ 24" O.C.
 2. SIDEWALKS ADJACENT TO BUILDING TO BE PLACED ON LIME TREATED SUBGRADE THE SAME AS PAVING ALL OTHER SIDEWALKS TO BE PLACED OVER 2" COMPACTED SAND. (P1 < 15)

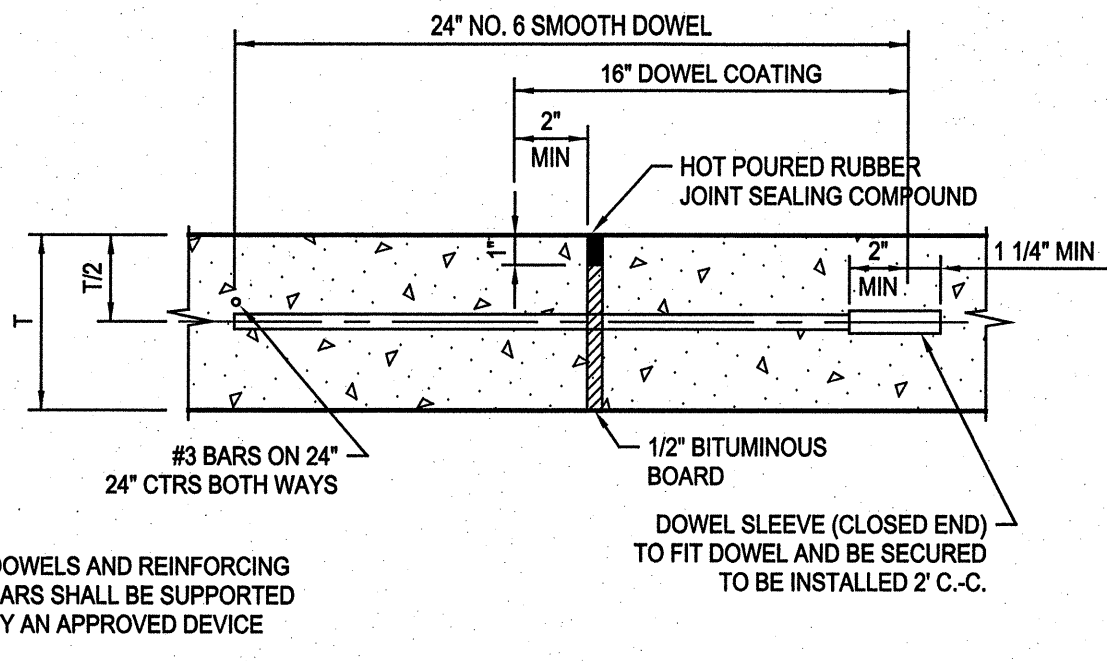
SIDEWALK PLAN
NTS



ELEVATION A **SECTION "B-B"**

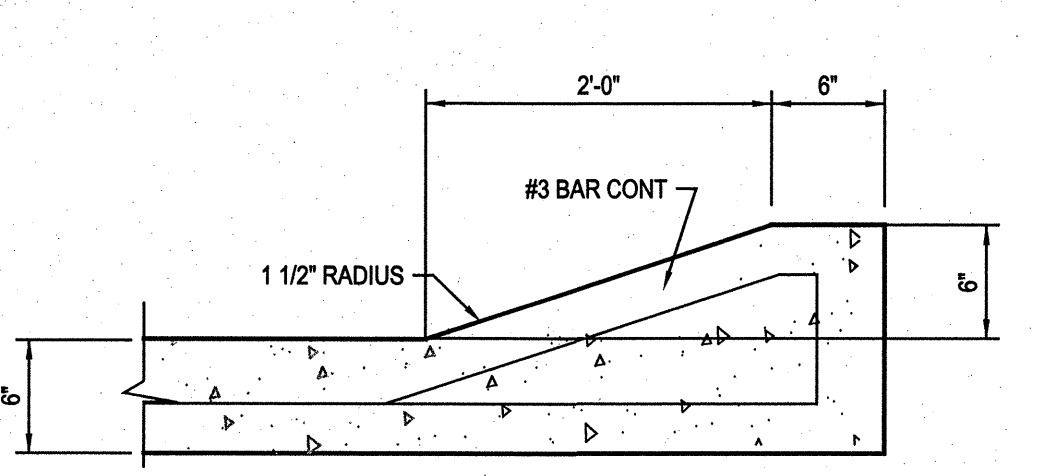


CONCRETE RAMP-INTERNAL
SCALE: 1/4"=1'-0"

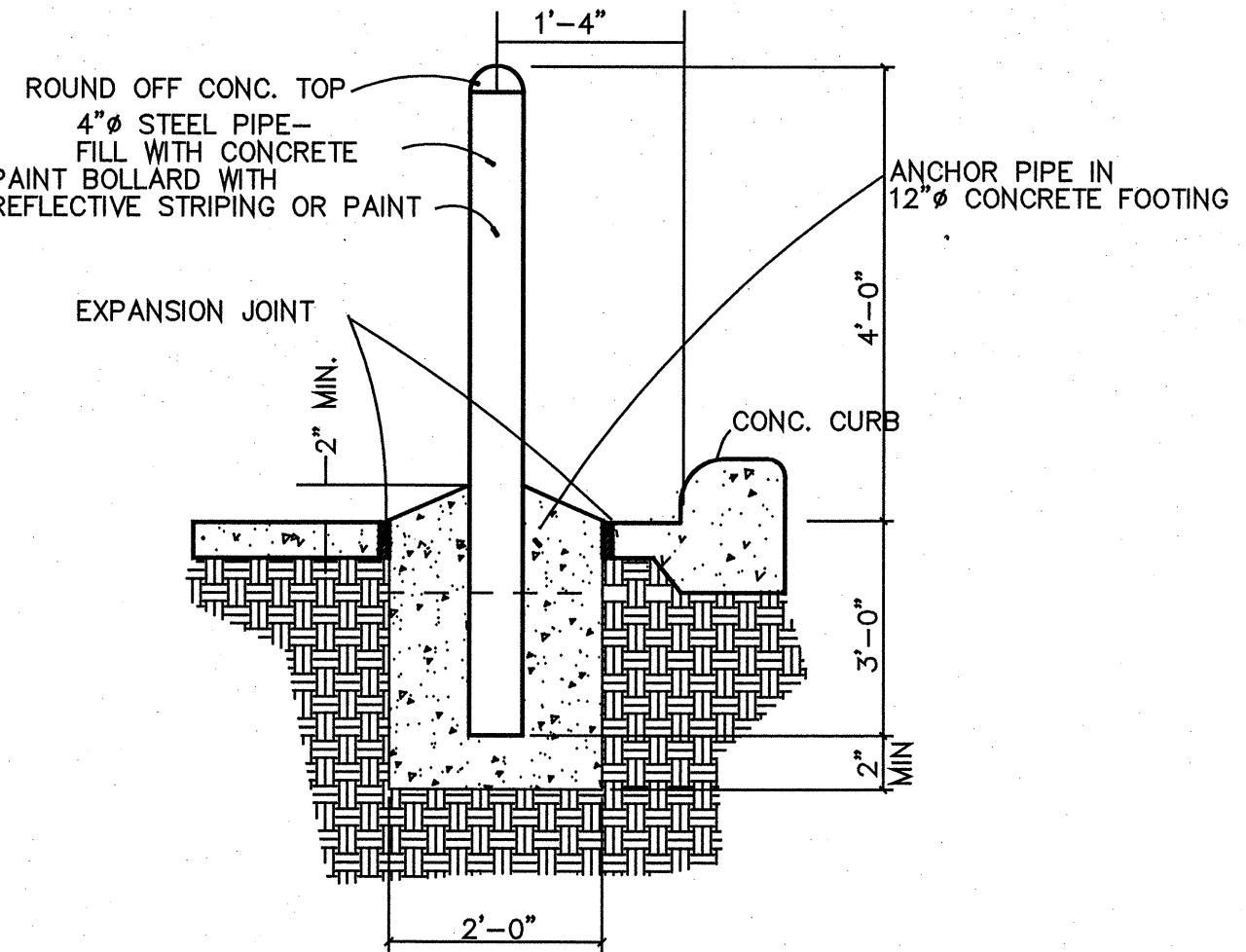


NOTES: DOWELS AND REINFORCING BARS SHALL BE SUPPORTED BY AN APPROVED DEVICE.
 DOWEL SLEEVE (CLOSED END) TO FIT DOWEL AND BE SECURED TO BE INSTALLED 2' C.C.

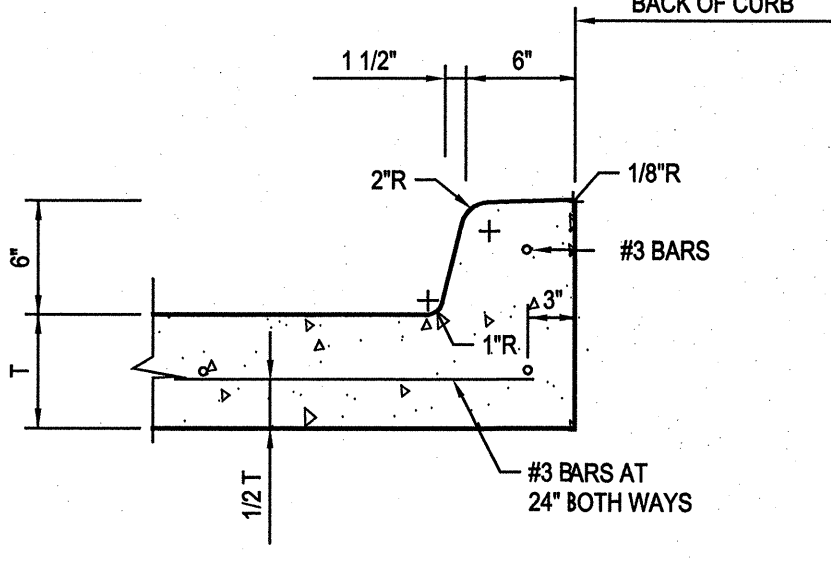
EXPANSION JOINT DETAIL
NTS MAXIMUM SPACING = 150 FEET



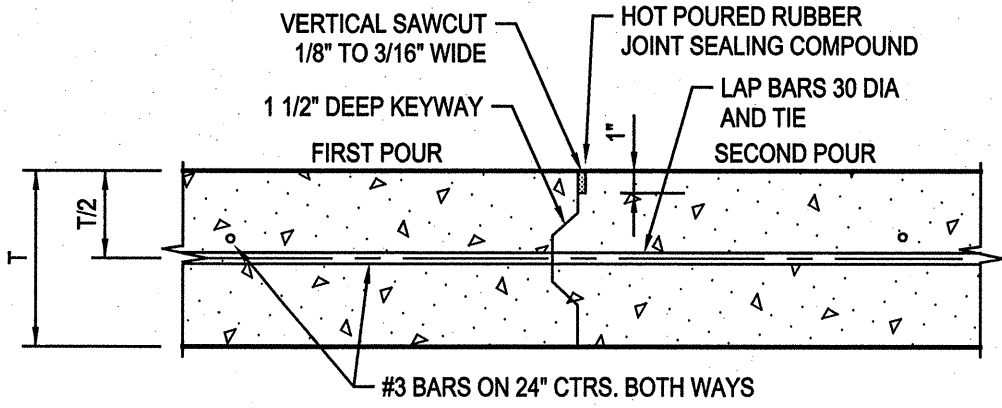
TYPICAL ROLL-OVER CURB
NTS



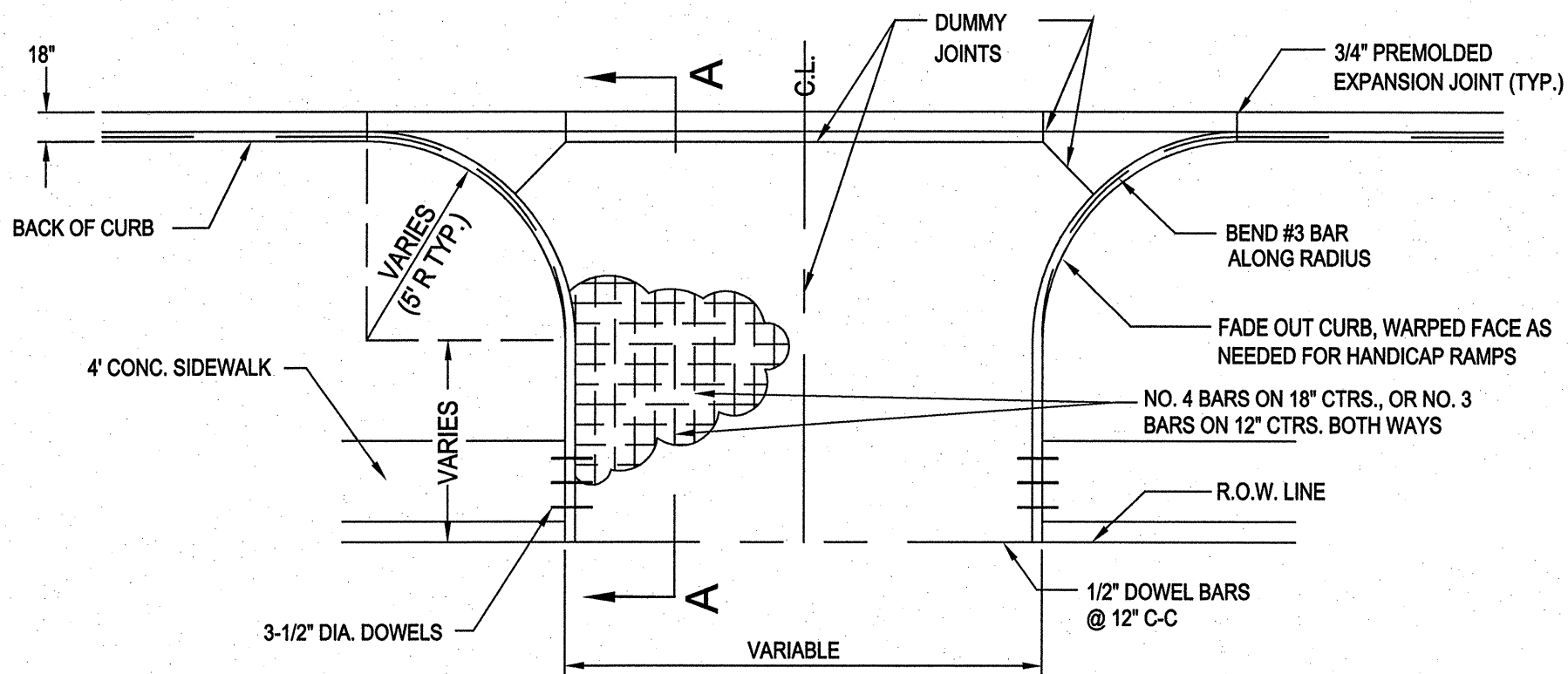
STEEL PIPE BOLLARD DETAIL
NOT TO SCALE



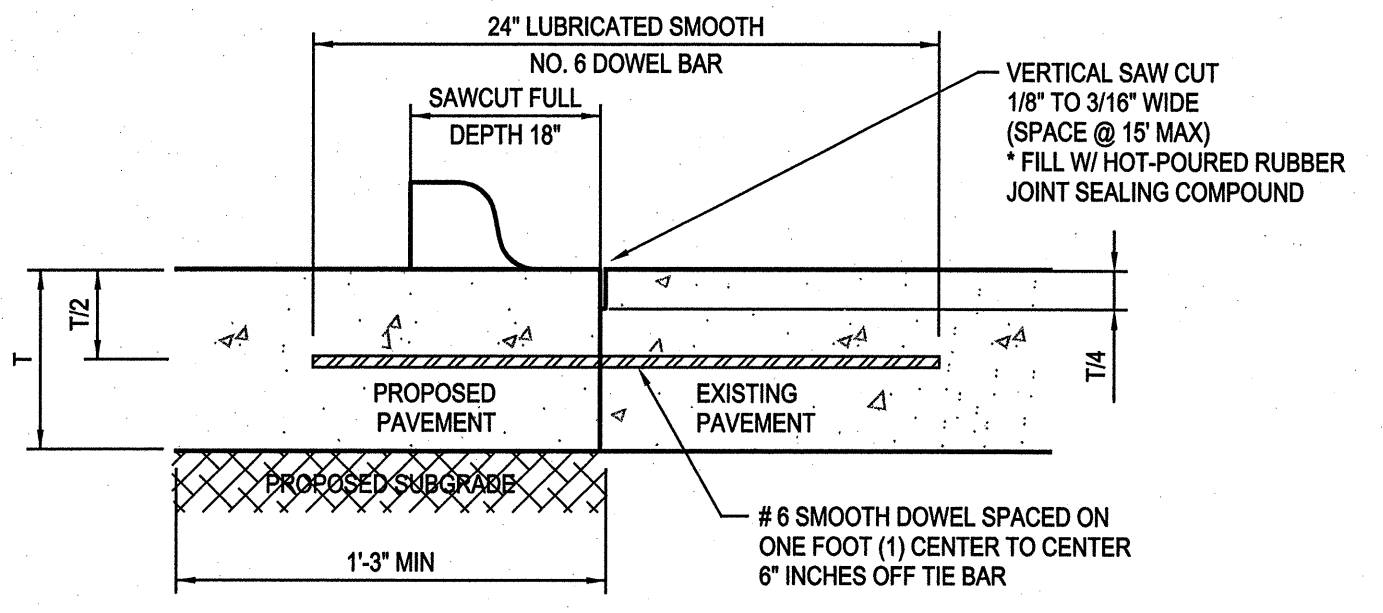
INTEGRAL CURB & GUTTER
NTS



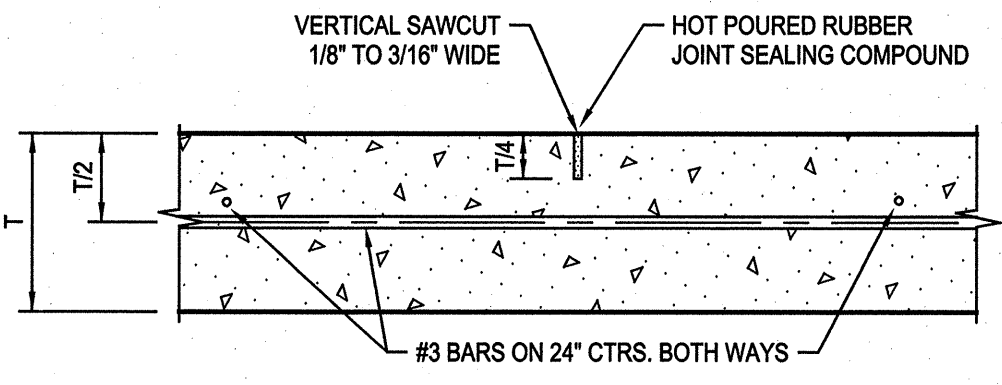
CONSTRUCTION JOINT DETAIL (L)
NTS



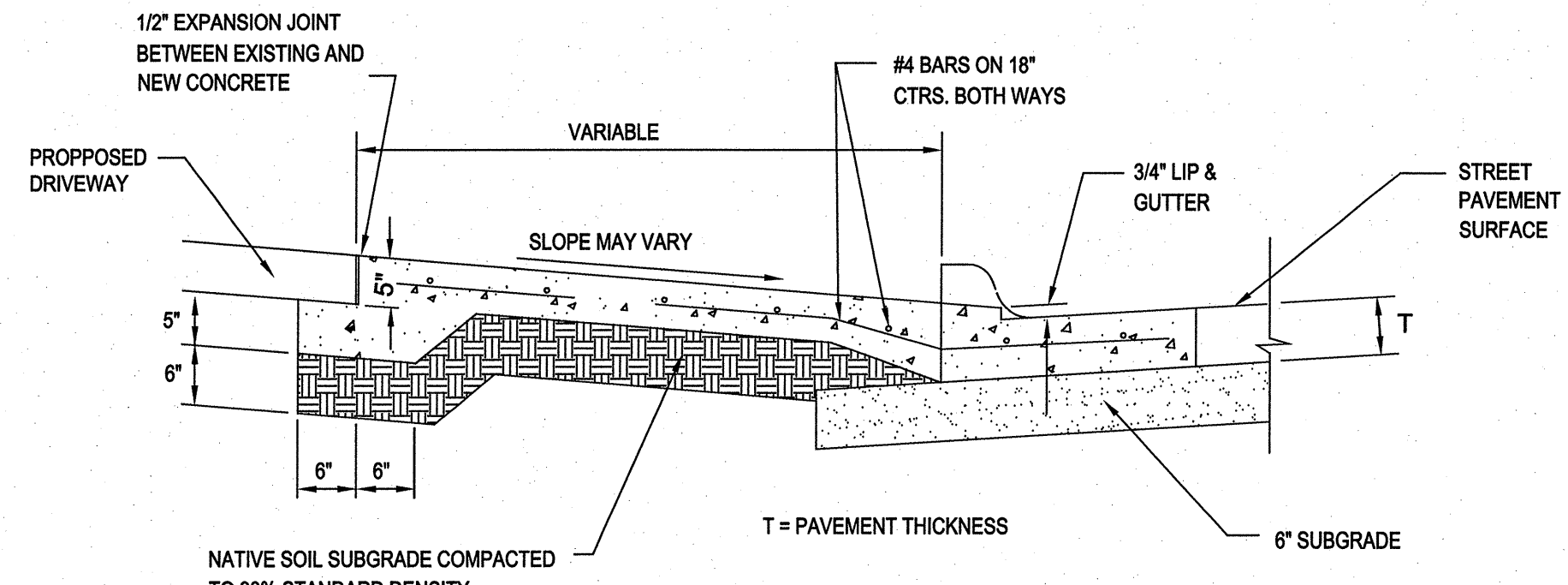
TYPICAL DRIVE APPROACH
SCALE: 1/8" = 1'-0"



HANDICAP RAMP DETAIL
NTS



SAWED DUMMY JOINT DETAIL (T)
NTS MAXIMUM SPACING = 15 FEET



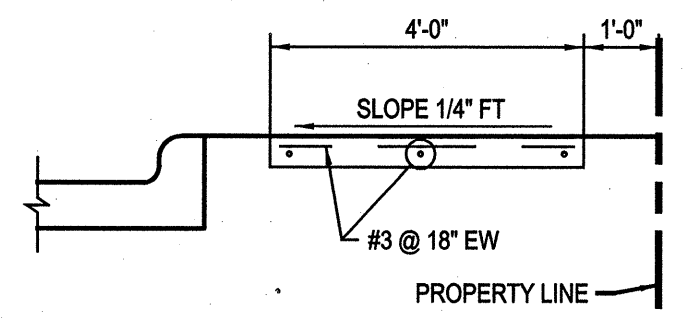
SECTION A-A (FOR TYPICAL DRIVE APPROACH)
SCALE: 3/4" = 1'-0"

* HOT-POURED RUBBER JOINT SEALING COMPOUND PER S.D.H.P.T. ITEM 360, SECTION 360.2 (8)(C), CLASS 2 (GREY)

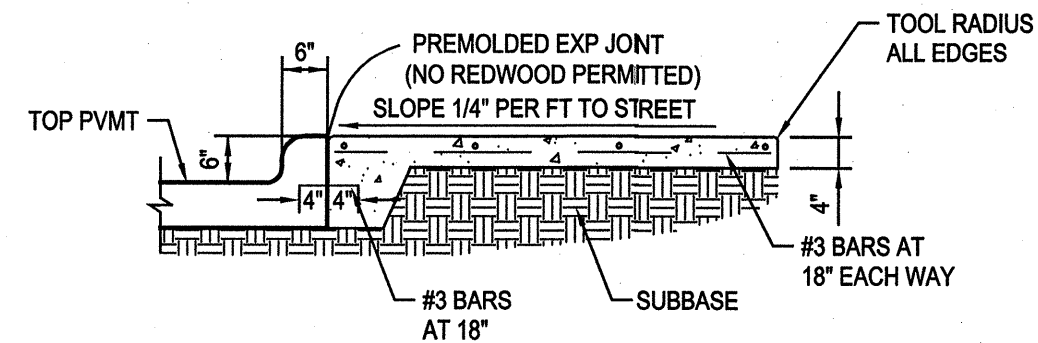
TO BE USED WHERE PROPOSED CONCRETE PAVEMENT MEETS EXISTING CONCRETE PAVEMENT

- NOTES:**
- NO. 5 SMOOTH DOWEL BAR MAY BE USED IN 5", 6" AND 7" PAVEMENT THICKNESS.
 - LONGITUDINAL BUTT CONSTRUCTION MAY BE UTILIZED IN PLACE OF LONGITUDINAL HINGED (KEYWAY) JOINT AT CONTRACTOR'S OPTION.
 - DOWEL BARS SHALL BE DRILLED INTO PAVEMENT HORIZONTALLY BY USE OF A MECHANICAL RIG. DRILLING BY HAND IS NOT APPLICABLE. PUSHING DOWEL BARS INTO GREEN CONCRETE IS NOT ACCEPTABLE.

LONGITUDINAL BUTT DETAIL
NTS



WALK/BUILDING/CURB INTERFACE
NTS

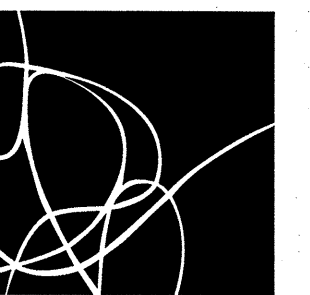


INTERIOR SIDEWALK TYPICAL SECTION
NTS

NOTE: NO SAND WILL BE PERMITTED UNDER PAVEMENT.

RECORD DRAWING
 This is to certify that changes and corrections have been made to conform to the contractor's record of this project.
 Signed: *[Signature]* Date: 8-11-09
 Glenn Engineering Corporation

PAVING DETAILS
SCALE: AS SHOWN



SHW GROUP
ARCHITECTS | ENGINEERS | PLANNERS

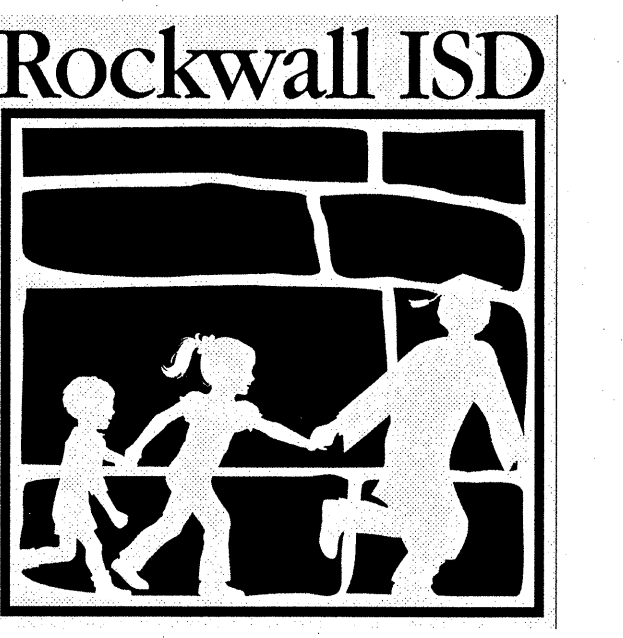
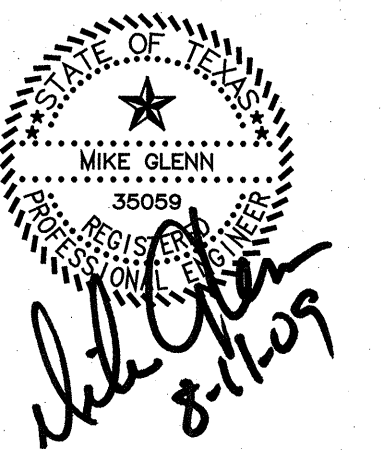
CIVIL:
GLENN ENGINEERING, INC.

STRUCTURAL:
SHW GROUP LLP

MEP:
ESTES, McCURE & ASSOCIATES

LANDSCAPING:
RAMSEY LANDSCAPE ARCHITECTS

FOOD SERVICE:
JMK DESIGNS



ROCKWALL HIGH SCHOOL
ROCKWALL, TEXAS

CHECKED:
File:
© 2008 SHW Group LLP

ISSUE: 5/27/2008

- Revisions:**
- ADDENDA #1 - MARCH 17, 2008
 - ADDENDA #2 - MARCH 25, 2008
 - ADDENDA #3 - APRIL 1, 2008
 - CITY REVIEW COMMENTS - APRIL 22, 2008
 - CITY REVIEW COMMENTS - SEPT. 09, 2008
 - RECORD SET - MARCH 04, 2009
 - REVISED RECORD SET - JUNE 04, 2009

Sheet Title:
PAVING DETAILS

CP 1.03