

SHW GROUP
ARCHITECTS | ENGINEERS | PLANNERS

CIVIL:
GLENN ENGINEERING, INC.

STRUCTURAL:
SHW GROUP LLP

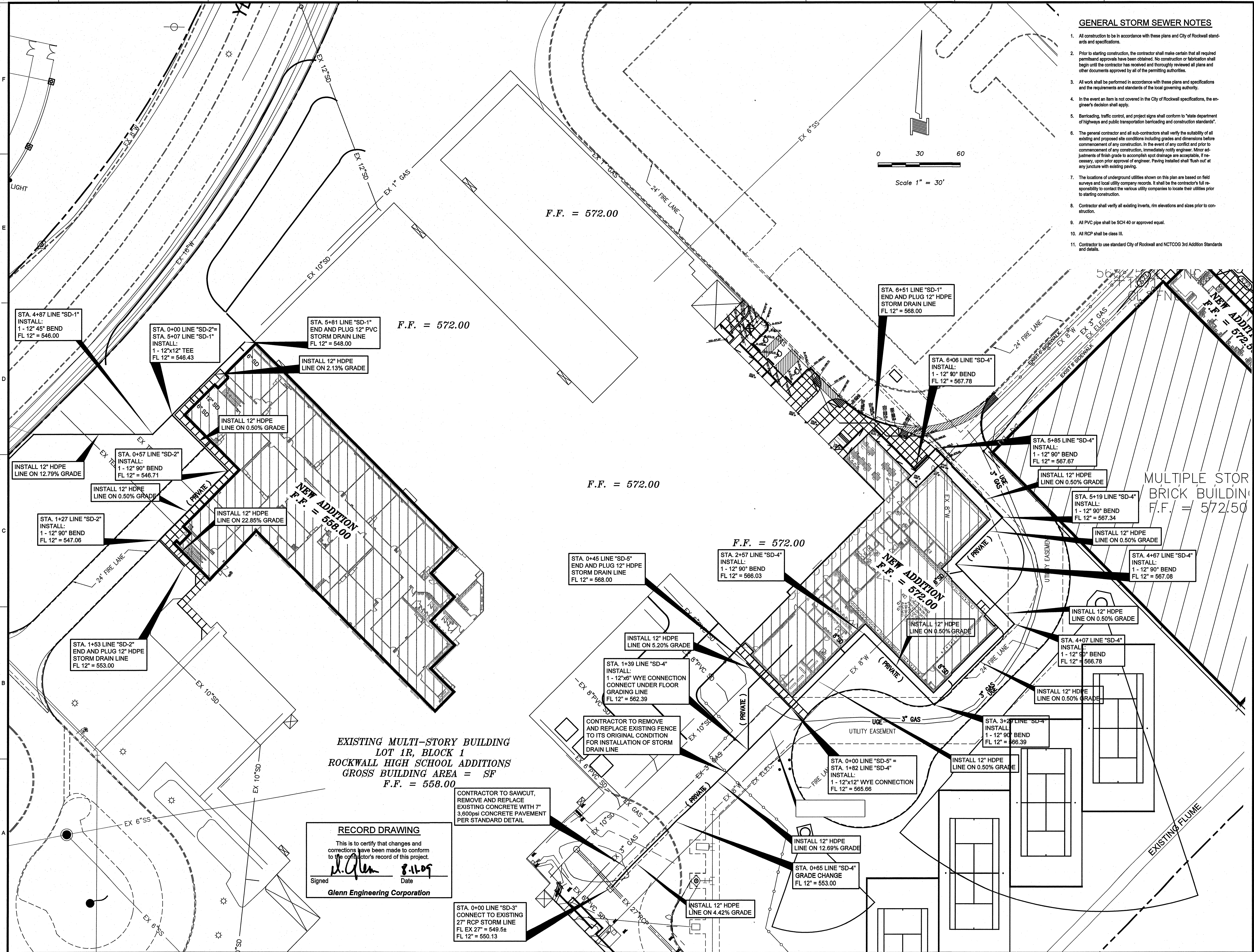
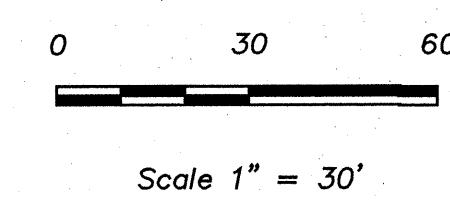
MEP:
ESTES, McCLURE & ASSOCIATES

LANDSCAPING:
RAMSEY LANDSCAPE ARCHITECTS

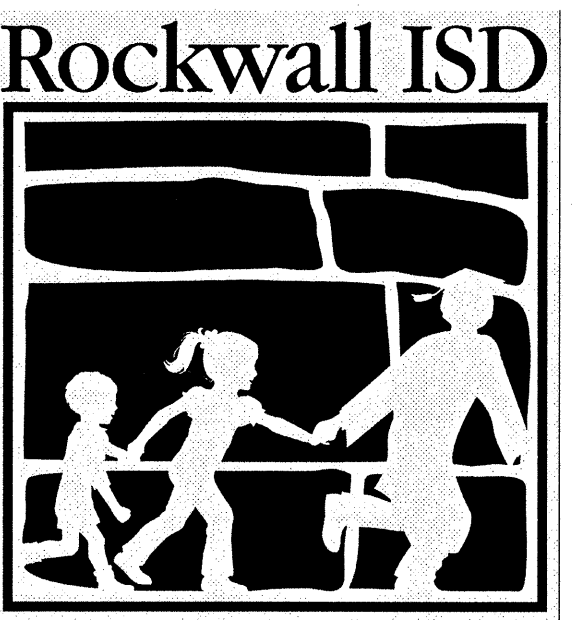
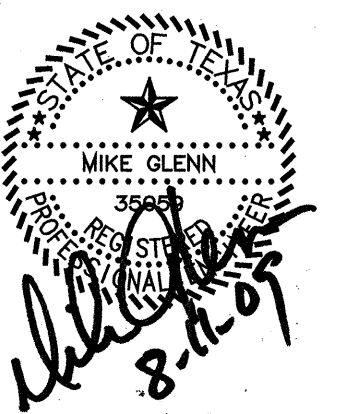
FOOD SERVICE:
JMK DESIGNS

GENERAL STORM SEWER NOTES

- All construction to be in accordance with these plans and City of Rockwall standards and specifications.
- Prior to starting construction, the contractor shall make certain that all required permit and approvals have been obtained. No construction or fabrication shall begin until the contractor has received and thoroughly reviewed all plans and other documents approved by all of the permitting authorities.
- All work shall be performed in accordance with these plans and specifications and the requirements and standards of the local governing authority.
- In the event an item is not covered in the City of Rockwall specifications, the engineer's decision shall apply.
- Baricading, traffic control, and project signs shall conform to "state department of highways and public transportation baricading and construction standards".
- The general contractor and all sub-contractors shall verify the suitability of all existing and proposed site conditions including grades and dimensions before commencement of any construction. In the event of any conflict and prior to commencement of any construction, immediately notify engineer. Minor adjustments of finish grade to accomplish spot drainage are acceptable, if necessary, upon prior approval of engineer. Paving installed shall flush out at any juncture with existing paving.
- The locations of underground utilities shown on this plan are based on field surveys and local utility company records. It shall be the contractor's full responsibility to contact the various utility companies to locate their utilities prior to starting construction.
- Contractor shall verify all existing inverts, rim elevations and sizes prior to construction.
- All PVC pipe shall be SCH 40 or approved equal.
- All RCP shall be class III.
- Contractor to use standard City of Rockwall and NCTCOG 3rd Addition Standards and details.



FINAL PLANS FOR PERMITTING AND CONSTRUCTION



ROCKWALL HIGH SCHOOL
ROCKWALL, TEXAS

CHECKED:

File:
© 2008 SHW Group LLP

ISSUE: 5/27/2008

Revisions:

- ADDENDA #1 - MARCH 17, 2008
- ADDENDA #2 - MARCH 25, 2008
- ADDENDA #3 - APRIL 1, 2008
- CITY REVIEW COMMENTS - APRIL 22, 2008
- CITY REVIEW COMMENTS - SEPT. 09, 2008
- RECORD SET - MARCH 04, 2009
- REVISED RECORD SET - JUNE 04, 2009

Sheet Title:
NORTH STORM PLAN

CU1.02

SHW Project: 4107.049.00

Plotted: Aug 11, 2008, 1:40 PM by user: rick. Saved: 8/11/2008 by user: reagan. \\rsawmp-cvserver\cadd\Rockwall\HighSchool\07 ADDITION\ROCKWALL-HS-SD-REV16.dwg

EXISTING MULTI-STORY BUILDING
LOT 1R, BLOCK 1
ROCKWALL HIGH SCHOOL ADDITIONS
GROSS BUILDING AREA = SF
F.F. = 558.00

RECORD DRAWING
This is to certify that changes and corrections have been made to conform to the contractor's record of this project.
[Signature] 8-11-09
Signed Date
Glenn Engineering Corporation

CONTRACTOR TO SAWCUT, REMOVE AND REPLACE EXISTING CONCRETE WITH 7" 3,600psi CONCRETE PAVEMENT PER STANDARD DETAIL

CONTRACTOR TO REMOVE AND REPLACE EXISTING FENCE TO ITS ORIGINAL CONDITION FOR INSTALLATION OF STORM DRAIN LINE

STA. 0+00 LINE "SD-3" CONNECT TO EXISTING 27" RCP STORM LINE FL EX 27" = 549.52 FL 12" = 550.13

STA. 0+45 LINE "SD-5" END AND PLUG 12" HDPE STORM DRAIN LINE FL 12" = 568.00

STA. 2+57 LINE "SD-4" INSTALL: 1-12" 90° BEND FL 12" = 566.03

STA. 1+39 LINE "SD-4" INSTALL: 1-12" 90° WYE CONNECTION CONNECT UNDER FLOOR GRADING LINE FL 12" = 562.39

STA. 0+00 LINE "SD-5" = STA. 1+82 LINE "SD-4" INSTALL: 1-12" x12" WYE CONNECTION FL 12" = 565.66

STA. 0+65 LINE "SD-4" GRADE CHANGE FL 12" = 553.00

STA. 4+87 LINE "SD-1" INSTALL: 1-12" 45° BEND FL 12" = 546.00

STA. 0+00 LINE "SD-2" = STA. 5+07 LINE "SD-1" INSTALL: 1-12" x12" TEE FL 12" = 546.43

STA. 5+81 LINE "SD-1" END AND PLUG 12" PVC STORM DRAIN LINE FL 12" = 548.00

STA. 6+51 LINE "SD-1" END AND PLUG 12" HDPE STORM DRAIN LINE FL 12" = 568.00

STA. 6+06 LINE "SD-4" INSTALL: 1-12" 90° BEND FL 12" = 567.78

STA. 5+85 LINE "SD-4" INSTALL: 1-12" 90° BEND FL 12" = 567.67

STA. 5+19 LINE "SD-4" INSTALL: 1-12" 90° BEND FL 12" = 567.34

STA. 4+67 LINE "SD-4" INSTALL: 1-12" 90° BEND FL 12" = 567.08

STA. 1+27 LINE "SD-2" INSTALL: 1-12" 90° BEND FL 12" = 547.06

INSTALL 12" HDPE LINE ON 0.50% GRADE

INSTALL 12" HDPE LINE ON 0.50% GRADE

INSTALL 12" HDPE LINE ON 12.79% GRADE

INSTALL 12" HDPE LINE ON 22.85% GRADE

STA. 1+53 LINE "SD-2" END AND PLUG 12" HDPE STORM DRAIN LINE FL 12" = 553.00

INSTALL 12" HDPE LINE ON 5.20% GRADE

INSTALL 12" HDPE LINE ON 0.50% GRADE

INSTALL 12" HDPE LINE ON 0.50% GRADE

INSTALL 12" HDPE LINE ON 0.50% GRADE

INSTALL 12" HDPE LINE ON 0.50% GRADE

INSTALL 12" HDPE LINE ON 12.69% GRADE

INSTALL 12" HDPE LINE ON 4.42% GRADE