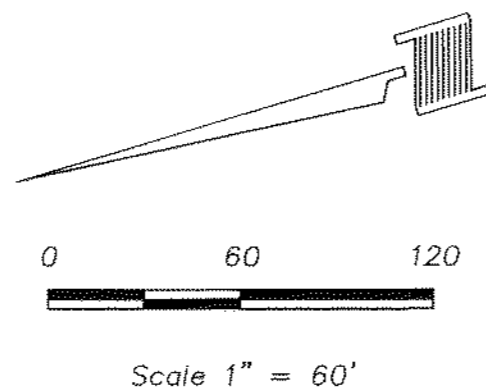


SEDIMENT CONTROL NOTES:

- CONTRACTOR TO CHOOSE LOCATION OF CONSTRUCTION ENTRANCE. THIS ENTRANCE MUST BE USED BY ALL TRAFFIC ENTERING OR EXITING THE SITE. SEE SHEET C 27 FOR STABILIZED CONSTRUCTION ENTRANCE DETAILS.
- SEDIMENT CONTROL DEVICES SHALL BE INSTALLED ACCORDING TO THE CONTRACT DOCUMENTS AND AS DIRECTED BY THE ENGINEER. ALL DEVICES SHALL BE MAINTAINED SUCH THAT THEY FUNCTION AS INTENDED THROUGHOUT THE ENTIRE CONSTRUCTION PERIOD. THE STONE FROM ROCK CHECK DAMS SHALL BE USED AS ENERGY DISSIPATORS FOR PROPOSED STORM SEWER AT CONSTRUCTION COMPLETION.
- CURB INLET PROTECTION SHALL BE INSTALLED AS SOON AS STORM DRAINAGE HAS BEEN CONSTRUCTED.
- PLYWOOD INLET PROTECTION TO BE PLACED AT UPSTREAM END OF ALL UNFINISHED PIPING AT DAYS END.
- ALL SEDIMENT CONTROL MEASURES TO REMAIN IN PLACE UNTIL ENTIRE SITE IS STABILIZED.
- THE EXTENT AND DURATION OF DISTURBANCE TO THE DRAINAGEWAYS SHALL BE MINIMIZED. THE FOLLOWING CONSTRUCTION SEQUENCE SHALL BE FOLLOWED:
 - INSTALL STABILIZED CONSTRUCTION ENTRANCE.
 - INSTALL SILT FENCE PRIOR TO DISTURBING SOIL. PERIMETER SILT FENCE TO BE INSTALLED OUTSIDE OF ANY POINT TO BE DISTURBED.
 - DURING CONSTRUCTION, INLET PROTECTION SHALL BE INSTALLED AS NEEDED. ALL SEDIMENT CONTROL MEASURES SHALL BE INSPECTED AND MAINTAINED PER CONTRACT REQUIREMENTS. ALL DISTURBED AREAS WHICH ARE INACTIVE FOR LONG PERIODS OF TIME SHALL BE VEGETATED.
 - ONLY WHEN ENTIRE SITE IS STABILIZED AND CONSTRUCTION IS COMPLETE, SHALL SEDIMENT CONTROL MEASURES BE REMOVED.
- CONTRACTOR SHALL CONTROL MUD ACCUMULATION ON ALL STREETS SURROUNDING THE PROJECT. NO MUD ACCUMULATION WILL BE ALLOWED IN PUBLIC STREETS.
- MAINTAIN ALL FILTERS DURING CONSTRUCTION TO PREVENT ANY BLOCKAGES FROM ACCUMULATED SEDIMENT. ADDITIONAL HAY BALES MAY BE REQUIRED DURING CONSTRUCTION AS SPECIFIED BY ENGINEER OR CITY INSPECTOR.
- ALL PROPOSED PARKING AREAS TO BE PAVED AS SOON AS POSSIBLE AFTER SUBGRADE IS PREPARED.
- CONTRACTOR SHALL REMOVE ALL TEMPORARY EROSION AND SEDIMENT CONTROLS ONLY WHEN THERE IS A SUFFICIENT GROWTH OF GROUND COVER TO PREVENT FURTHER EROSION (75% GROUND COVER MINIMUM, MOVABLE, 1'-2" TALL).

NOTE:
THE SIDES AND BOTTOM OF THE POND TO BE STABILIZED WITH ANCHORED SEEDED CURLEX OR SOD PRIOR TO PAVING.



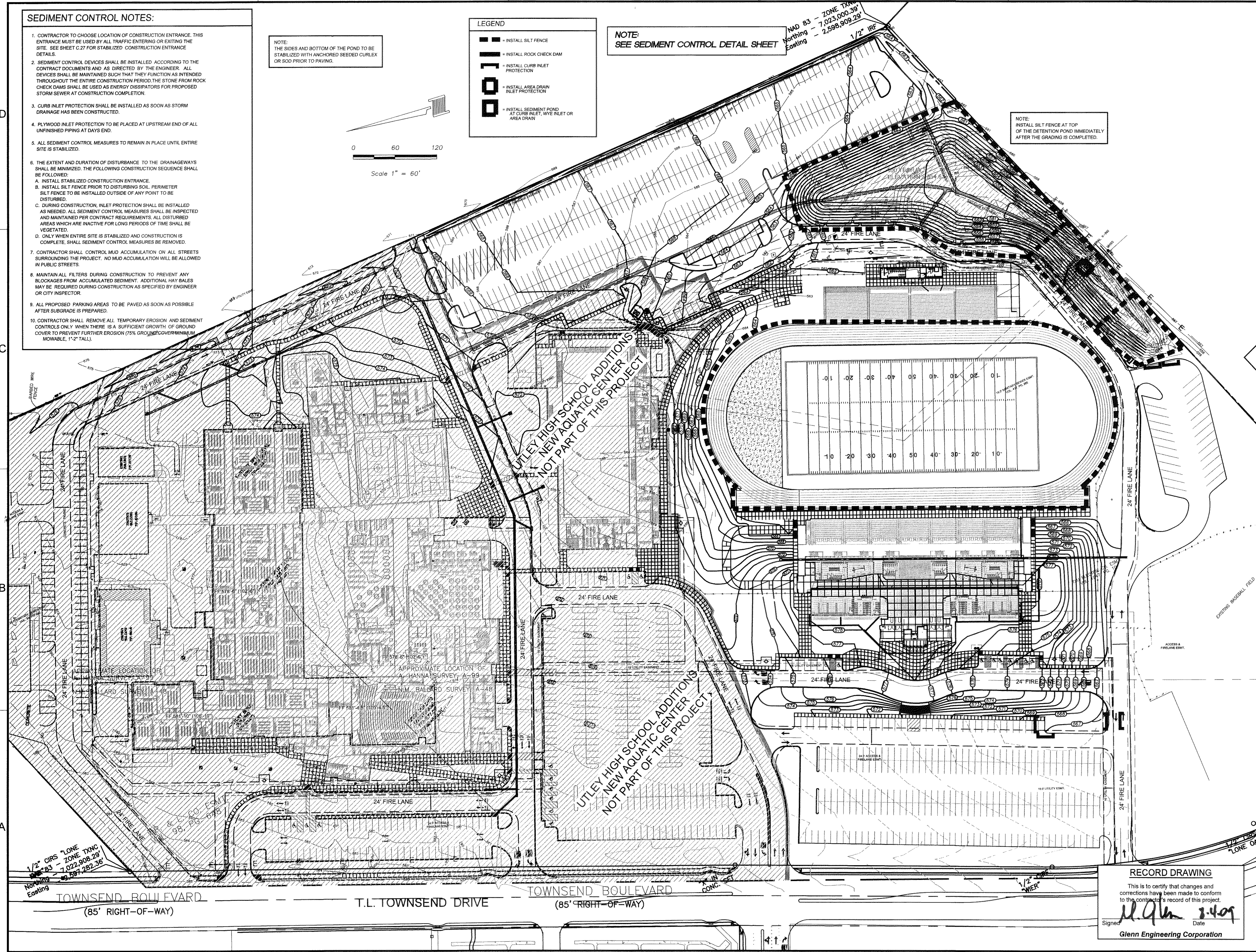
LEGEND

- INSTALL SILT FENCE
- INSTALL ROCK CHECK DAM
- INSTALL CURB INLET PROTECTION
- INSTALL AREA DRAIN INLET PROTECTION
- INSTALL SEDIMENT POND AT CURB INLET, WYE INLET OR AREA DRAIN

NOTE:
SEE SEDIMENT CONTROL DETAIL SHEET

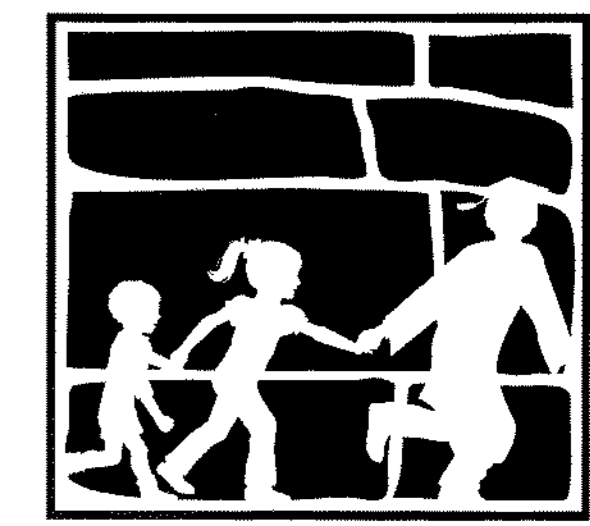
MAD 83 - ZONE TXNG
Northing - 7,023,000.39
Easting - 2,598,909.29

NOTE:
INSTALL SILT FENCE AT TOP OF THE DETENTION POND IMMEDIATELY AFTER THE GRADING IS COMPLETED.



- Consultants:
- CIVIL:
GLENN ENGINEERING CORP
 - STRUCTURAL:
SHW GROUP, LLP
 - MEP:
ESTES McCLURE & ASSOCIATES, INC.
FOOD SERVICE:
JMK FOODSERVICE CONSULTING & DESIGN, LLC
 - LANDSCAPING:
RAMSEY LANDSCAPE ARCHITECTS, LLP

Final Plans for Bidding and Construction



Rockwall
INDEPENDENT SCHOOL DISTRICT
WILKERSON SANDERS STADIUM RENOVATIONS
ROCKWALL, TEXAS

Project Number: 4107.048.00
Drawing Date: 05/29/2008
Drawn:
Checked:
Scale:
ACAD File: 2008WILKERSON-SANDERS-REV8.dwg
© 2008 SHW Group, LLP

Revisions:

1	11/05/08	CITY REVISIONS
2	12/02/08	CITY REVISIONS #2
3	12/12/08	CITY REVISIONS #3
4	12/16/08	CITY REVISIONS #4
5	01/26/09	CITY REVISIONS #5
6	08/03/09	RECORD SET

Sheet Title:
SWPPP PLAN

RECORD DRAWING
This is to certify that changes and corrections have been made to conform to the contractor's record of this project.
Signed: *M. Glenn* Date: 8/4/09
Glenn Engineering Corporation

CG 1.10

Aug 03, 2009 - 3:31pm User: Rick
\\robertpic-drive\rock\SDUT\LEY\2008 ADDITIONS\BID SET\2008 WILKERSON-SANDERS STADIUM\2008WILKERSON-SANDERS-REV8.dwg