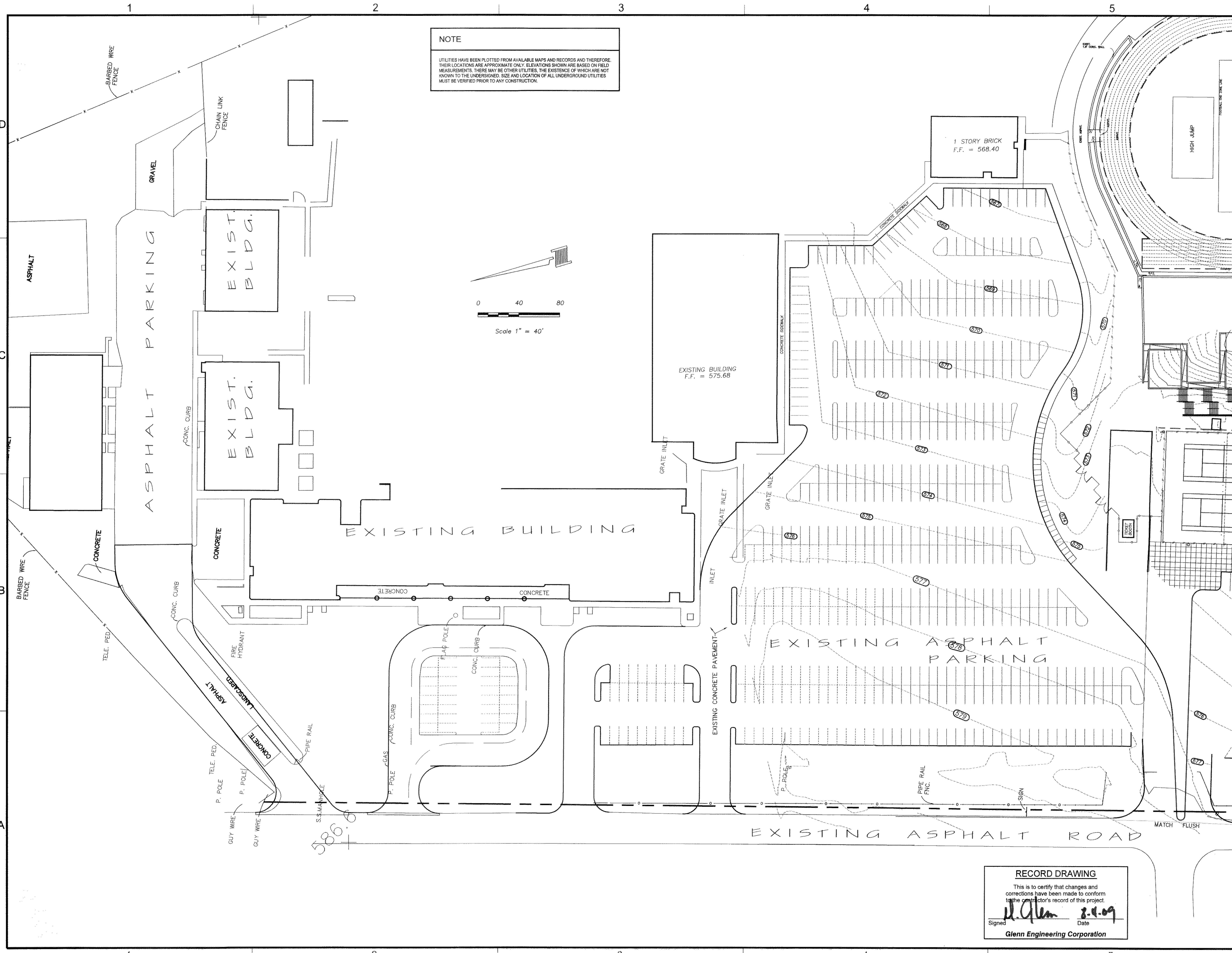


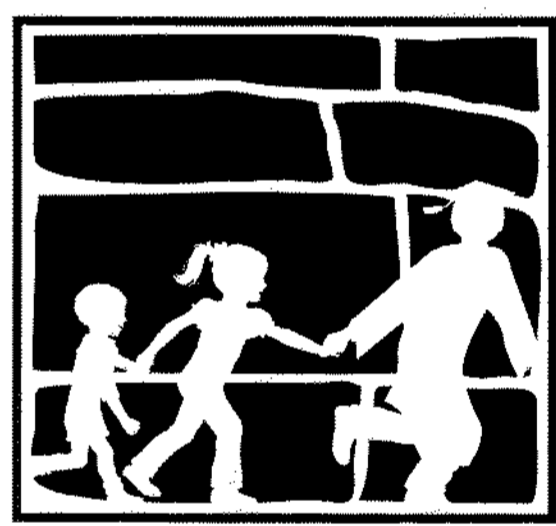
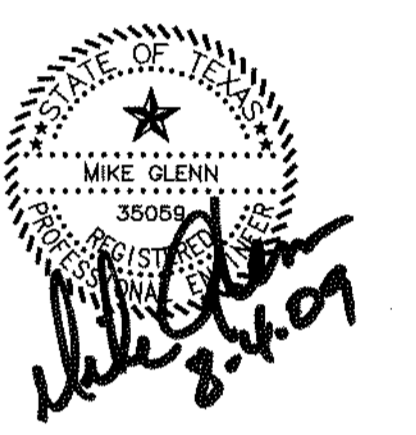
Aug 03, 2009 - 1:50pm User: Rick
 \\Robertpc-drive\rock\SD\TULE\2008 ADDITIONS\BID SET\2008 WILKERSON-SANDERS STADIUM\STADIUM-TOPO.dwg



SHW GROUP
 ARCHITECTS | ENGINEERS | PLANNERS

- Consultants:
- CIVIL:
GLENN ENGINEERING CORP
 - STRUCTURAL:
SHW GROUP, LLP
 - MEP:
ESTES McCLURE & ASSOCIATES, INC.
FOOD SERVICE:
JMK FOODSERVICE CONSULTING & DESIGN, LLC
 - LANDSCAPING:
RAMSEY LANDSCAPE ARCHITECTS, LLP

Final Plans for Bidding and Construction



Rockwall
 INDEPENDENT SCHOOL DISTRICT

WILKERSON SANDERS STADIUM RENOVATIONS
 ROCKWALL, TEXAS

Project Number: 4107.048.00
 Drawing Date: 05/29/2008
 Drawn:
 Checked:
 Scale:
 ACAD File: STADIUM-TOPO.dwg
 © 2008 SHW Group, LLP

Revisions:

1	11/05/08	CITY REVISIONS
2	12/02/08	CITY REVISIONS #2
3	12/12/08	CITY REVISIONS #3
4	12/16/08	CITY REVISIONS #4
5	01/26/09	CITY REVISIONS #5
6	08/03/09	RECORD SET

RECORD DRAWING
 This is to certify that changes and corrections have been made to conform to the contractor's record of this project.
 Signed: *Mike Glenn* Date: 8-4-09
 Glenn Engineering Corporation

Sheet Title:
NORTH TOPOGRAPHIC SURVEY

V 1.01