

SHWGROUP

ARCHITECTS | ENGINEERS | PLANNERS

CIVIL:
GLENN ENGINEERING, INC.

STRUCTURAL:
SHW GROUP LLP

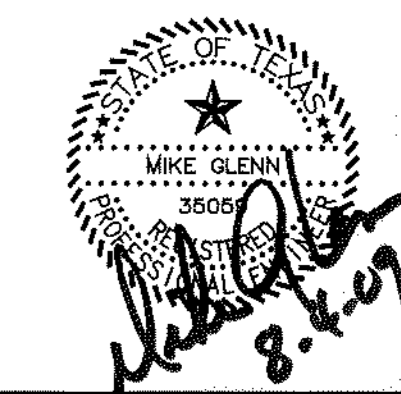
MEP:
ESTES, McCURE &
ASSOCIATES

LANDSCAPING:
GRUBBS-RAMSEY, INC.

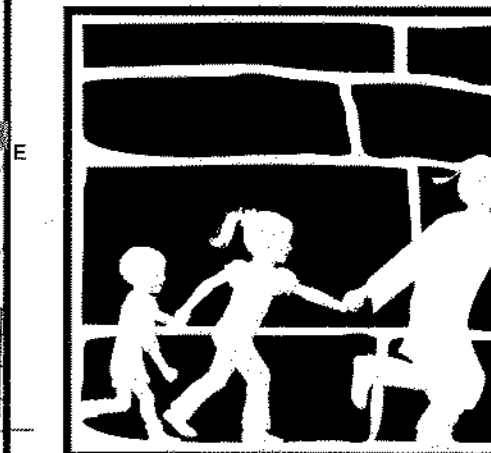
FOOD SERVICE:
JMK DESIGNS

AQUATICS:
AQUATIC EXCELLENCE

FINAL PLANS
FOR BIDDING AND CONSTRUCTION



Rockwall ISD



HERMAN E. UTLEY
MIDDLE SCHOOL

CHECKED:
File:
© 2008 SHW Group LLP
ISSUE: 08/22/2008

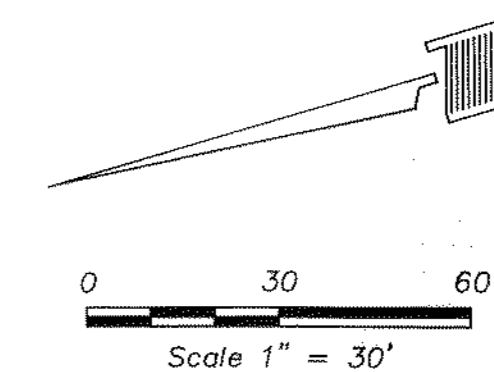
1	09/19/08	CITY REVISIONS #1
2	09/28/08	CITY REVISIONS #2
3	10/01/08	CITY REVISIONS #3
4	10/13/08	REVISIONS #4
5	11/18/08	GRADING REVISIONS
6	12/02/08	UTILITY REVISIONS
7	01/14/09	GRADING REVISIONS
8	02/26/09	GRADING REVISIONS
9	05/20/09	COURTYARD STORM
10	07/27/09	RECORD SET

Sheet Title:
**UTLEY WEST
STORM SEWER
PLAN**

CU 1.09

GENERAL STORM SEWER NOTES:

1. ALL CONSTRUCTION TO BE IN ACCORDANCE WITH THESE PLANS AND CITY OF ROCKWALL STANDARDS AND SPECIFICATIONS.
2. PRIOR TO STARTING CONSTRUCTION, THE CONTRACTOR SHALL MAKE CERTAIN THAT ALL REQUIRED PERMITS AND APPROVALS HAVE BEEN OBTAINED. NO CONSTRUCTION OR FABRICATION SHALL BEGIN UNTIL THE CONTRACTOR HAS RECEIVED AND THOROUGHLY REVIEWED ALL PLANS AND OTHER DOCUMENTS APPROVED BY ALL OF THE PERMITTING AUTHORITIES.
3. ALL WORK SHALL BE PERFORMED IN ACCORDANCE WITH THESE PLANS AND SPECIFICATIONS AND THE REQUIREMENTS AND STANDARDS OF THE LOCAL GOVERNING AUTHORITY.
4. IN THE EVENT AN ITEM IS NOT COVERED IN THE CITY OF ROCKWALL SPECIFICATIONS, THE ENGINEER'S DECISION SHALL APPLY.
5. BARRICADING, TRAFFIC CONTROL, AND PROJECT SIGNS SHALL CONFORM TO "STATE DEPARTMENT OF HIGHWAYS AND PUBLIC TRANSPORTATION BARRICADING AND CONSTRUCTION STANDARDS".
6. THE GENERAL CONTRACTOR AND ALL SUB-CONTRACTORS SHALL VERIFY THE SUITABILITY OF ALL EXISTING AND PROPOSED SITE CONDITIONS INCLUDING GRADES AND DIMENSIONS BEFORE COMMENCEMENT OF ANY CONSTRUCTION. IN THE EVENT OF ANY CONFLICT AND PRIOR TO COMMENCEMENT OF ANY CONSTRUCTION, IMMEDIATELY NOTIFY ENGINEER. MINOR ADJUSTMENTS OF FINISH GRADE TO ACCOMPLISH SPOT DRAINAGE ARE ACCEPTABLE, IF NECESSARY, UPON PRIOR APPROVAL OF ENGINEER. PAVING INSTALLED SHALL "FLUSH OUT" AT ANY JUNCTURE WITH EXISTING PAVING.
7. THE LOCATIONS OF UNDERGROUND UTILITIES SHOWN ON THIS PLAN ARE BASED ON FIELD SURVEYS AND LOCAL UTILITY COMPANY RECORDS. IT SHALL BE THE CONTRACTOR'S FULL RESPONSIBILITY TO CONTACT THE VARIOUS UTILITY COMPANIES TO LOCATE THEIR UTILITIES PRIOR TO STARTING CONSTRUCTION.
8. CONTRACTOR SHALL VERIFY ALL EXISTING INVERTS, RIM ELEVATIONS AND SIZES PRIOR TO CONSTRUCTION.
9. ALL NON RCP DRAIN PIPE SHALL BE PVC SCH 40, ADS OR APPROVED EQUAL.
10. ALL RCP SHALL BE CLASS III.
11. W.E. AS INDICATED ON INLET CALLS INDICATES WATER ELEVATION AT INLET DURING 100 YEAR STORM EVENT.

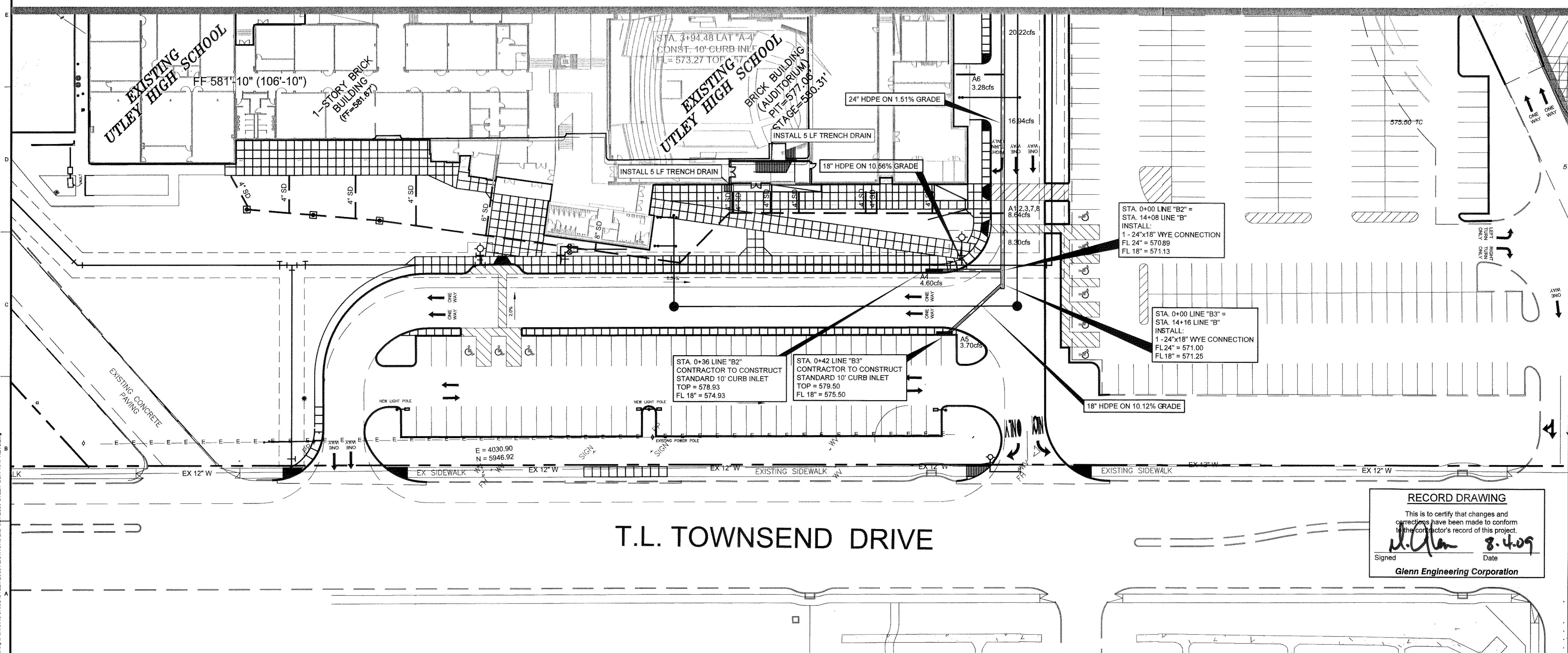


NOTE:

SEE SHEET MP 8.0 FOR DOWNSPOUT & ROOF DRAIN LOCATIONS. ALL ROOF DRAINS & DOWNSPOUTS SHALL BE CONNECTED TO STORM SEWER SYSTEM.

MATCH LINE - CU 1.08

T.L. TOWNSEND DRIVE



RECORD DRAWING
 This is to certify that changes and corrections have been made to conform to the contractor's record of this project.
 Signed: *[Signature]* Date: 8-4-09
 Glenn Engineering Corporation

Project: Aug 3, 2008, 1:24 PM by user: dck. Sheet: 7/12/2008 by user: dck. \\roam\p\c-draw\rockwall\utley\08\ADDITIONS\BID SET\08\UTLEY\SCH\TOWNSEND\REV0.dwg