



SHW GROUP

ARCHITECTS | ENGINEERS | PLANNERS

CIVIL:
GLENN ENGINEERING, INC.

STRUCTURAL:
SHW GROUP LLP

MEP:
ESTES, McCLURE &
ASSOCIATES

LANDSCAPING:
GRUBBS-RAMSEY, INC.

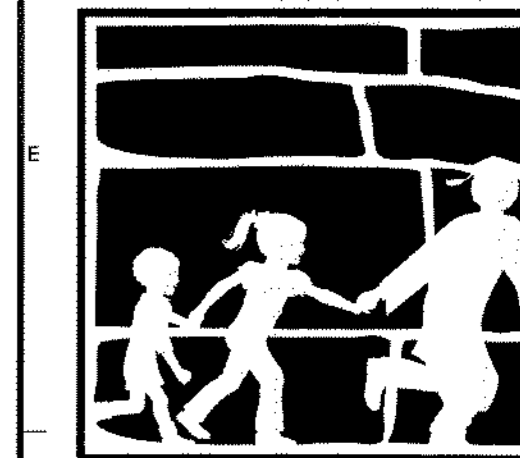
FOOD SERVICE:
JMK DESIGNS

AQUATICS:
AQUATIC EXCELLENCE

FINAL PLANS
FOR BIDDING AND CONSTRUCTION



Rockwall ISD



HERMAN E. UTLEY
MIDDLE SCHOOL

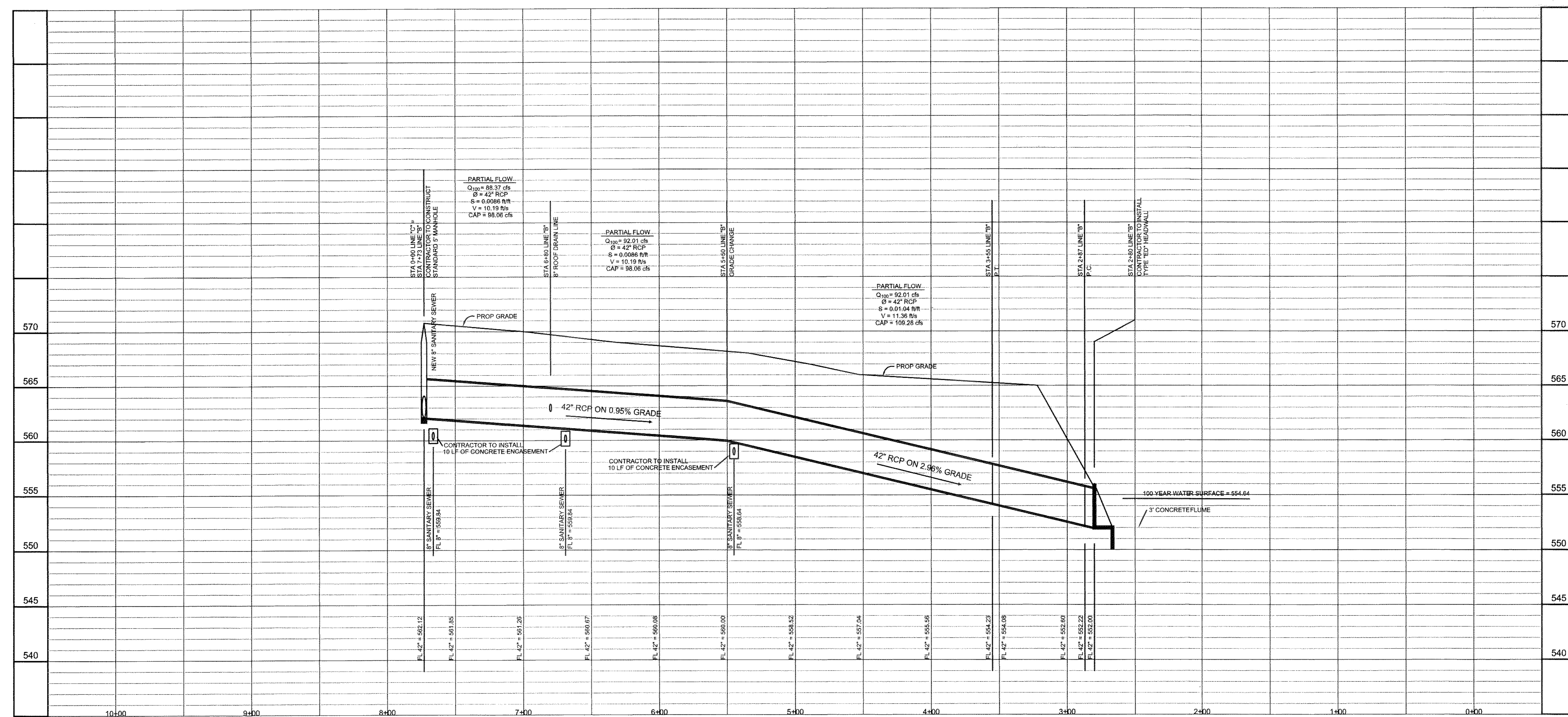
CHECKED:
File:
© 2008 SHW Group LLP

ISSUE: 08/22/2008

1	09/19/08	CITY REVISIONS #1
2	09/28/08	CITY REVISIONS #2
3	10/01/08	CITY REVISIONS #3
4	10/13/08	REVISIONS #4
5	11/19/08	GRADING REVISIONS
6	12/02/08	UTILITY REVISIONS
7	01/14/09	GRADING REVISIONS
8	02/26/09	GRADING REVISIONS
9	05/20/09	COURTYARD STORM
10	07/27/09	RECORD SET

Sheet Title:
**STORM
PROFILES**

CU 1.12



LINE "B" - PRIVATE

RECORD DRAWING

This is to certify that changes and corrections have been made to conform to the contractor's record of this project.

Signed: *J. Glenn* Date: *8.4.09*

Glenn Engineering Corporation

Plotfile: Aug 3, 2009, 1:25 PM, by user: rick, saved as: 21112009, by user: rick, location: \\shwgroup\shared\PC\COMMON\PROJECTS\2008\HERMANUTLEY\21112009\UTLEY-SCHOOL-PLAN-REV.dwg