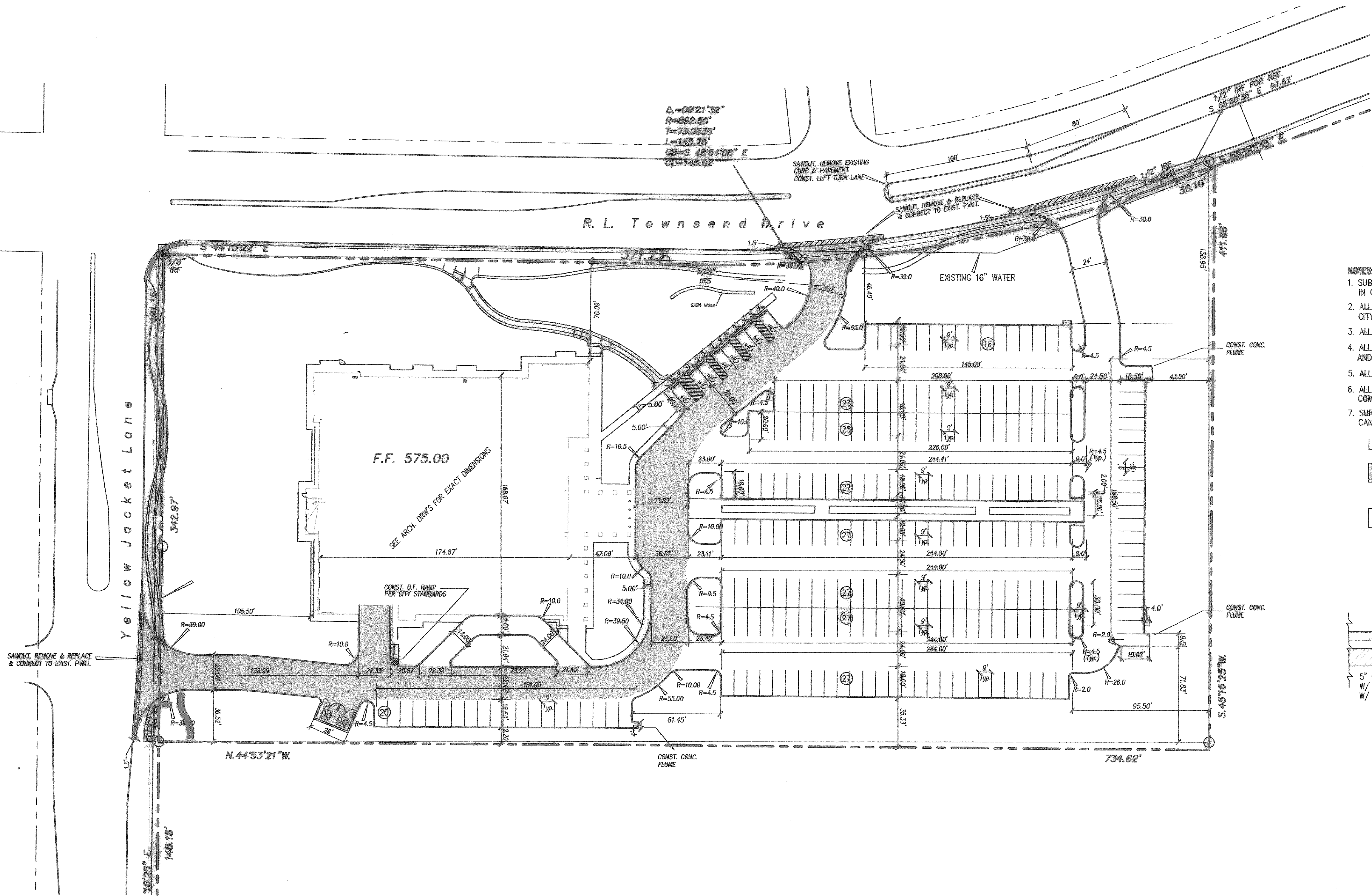
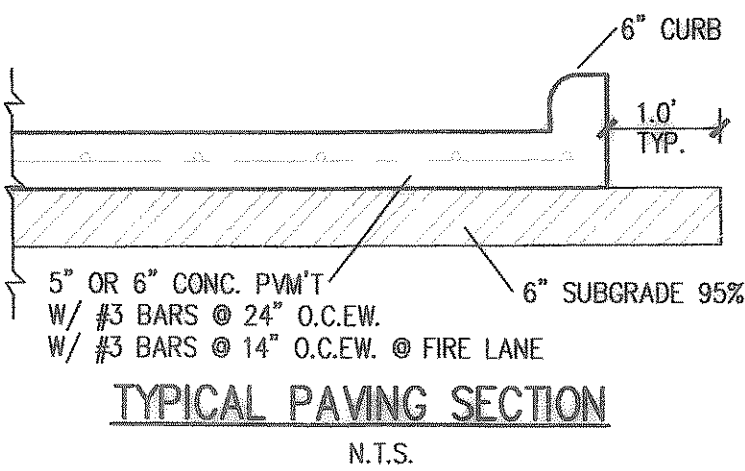


Z:\Projects\6-Commercial\Library\Construction\rockwell-dimcontrol.dwg Tue Jul 01 15:02:12 2008



- NOTES:
1. SUBGRADE PREPARATION SHALL BE AS SPECIFIED IN GEOTECHNICAL REPORT FOR THIS SITE.
 2. ALL CONSTRUCTION TO BE IN CONFORMANCE WITH THE CITY OF ROCKWALL SPECIFICATIONS AND STANDARDS.
 3. ALL RADII ARE 2' UNLESS OTHERWISE NOTED.
 4. ALL DIMENSIONS ARE TO FACE OF CURB AND FACE OF BUILDING UNLESS OTHERWISE NOTED.
 5. ALL FIRE LANES MUST BE 6\" 3600 PSI CONCRETE.
 6. ALL CURB RAMPS WITHIN PUBLIC RIGHT-OF-WAY SHALL COMPLY TO TDLR ADMINISTRATIVE RULE 68.102(B)(2) AND TAS 4.29.2.
 7. SURFACE TREATMENTS OTHER THAN TRUNCATED DOMES CANNOT BE ACCEPTED WITHOUT WRITTEN APPROVAL BY TDLR.

- LEGEND:
- 6\" 3600 PSI CONCRETE PAVEMENT
6 1/2 SACK MIN. FOR HAND POUR
6 SACK MIN. FOR MACHINE POUR
 - 5\" 3000 PSI CONCRETE PAVEMENT



CONSTRUCTION RECORD DRAWINGS
JULY 2008

Revision	Date	Description

DIMENSIONAL CONTROL PLAN
AND
PAVING PLAN

Rockwall Library

F.C. CUNY CORPORATION

#2 Horizon Court
Heath, Texas 75032
Phone: 469-402-7700
Fax: 469-402-0700

THE SEAL APPEARING ON THIS
DOCUMENT WAS AUTHORIZED BY
CHRISTOPHER R. CUNY, P.E. 65642

7-1-2008

Drawn By: MSC	Checked By: DJW
Date: 6-22-07	Project No.: 05-017
Sheet Title: Dimensional Control & Paving Plan	
Scale: 1"=40'	Sheet No.: 2 of 11