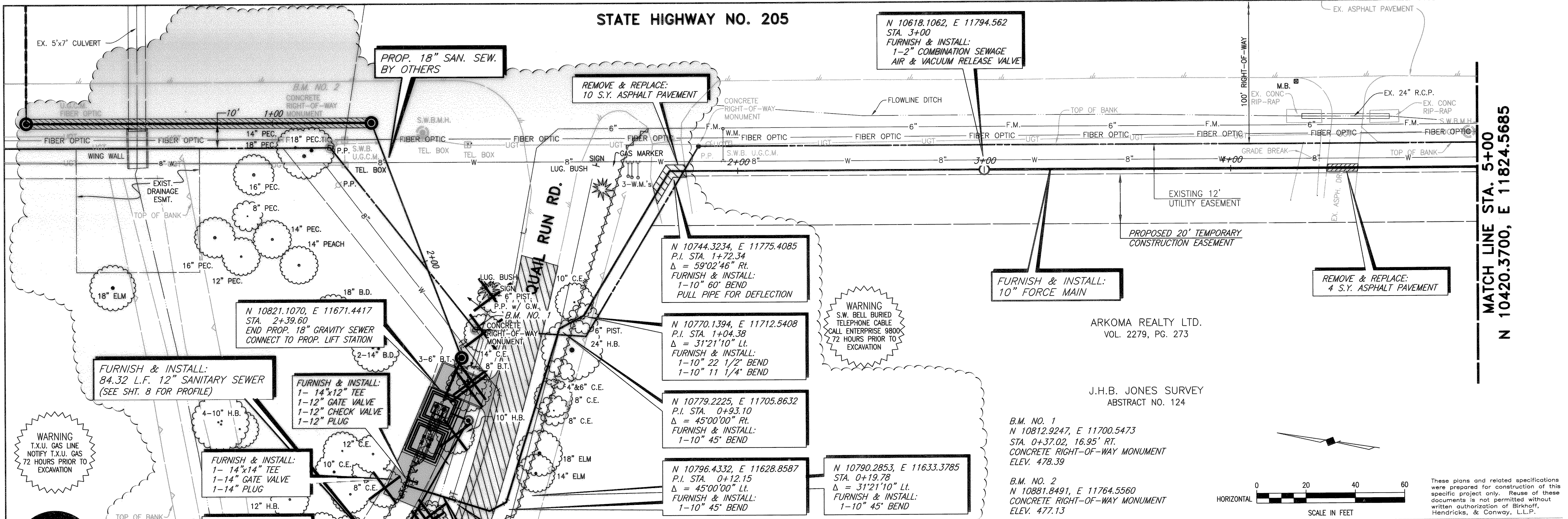


STATE HIGHWAY NO. 205



N 10618.1062, E 11794.562
STA. 3+00
FURNISH & INSTALL:
1-2" COMBINATION SEWAGE
AIR & VACUUM RELEASE VALVE

PROP. 18" SAN. SEW.
BY OTHERS

REMOVE & REPLACE:
10 S.Y. ASPHALT PAVEMENT

N 10744.3234, E 11775.4085
P.I. STA. 1+72.34
 $\Delta = 59^{\circ}02'46"$ Rt.
FURNISH & INSTALL:
1-10" 60' BEND
PULL PIPE FOR DEFLECTION

N 10770.1394, E 11712.5408
P.I. STA. 1+04.38
 $\Delta = 31^{\circ}21'10"$ Lt.
FURNISH & INSTALL:
1-10" 22 1/2' BEND
1-10" 11 1/4' BEND

N 10779.2225, E 11705.8632
P.I. STA. 0+93.10
 $\Delta = 45^{\circ}00'00"$ Rt.
FURNISH & INSTALL:
1-10" 45' BEND

N 10796.4332, E 11628.8587
P.I. STA. 0+12.15
 $\Delta = 45^{\circ}00'00"$ Lt.
FURNISH & INSTALL:
1-10" 45' BEND

WARNING
S.W. BELL BURIED
TELEPHONE CABLE
CALL ENTERPRISE 9800
72 HOURS PRIOR TO
EXCAVATION

FURNISH & INSTALL:
10" FORCE MAIN

REMOVE & REPLACE:
4 S.Y. ASPHALT PAVEMENT

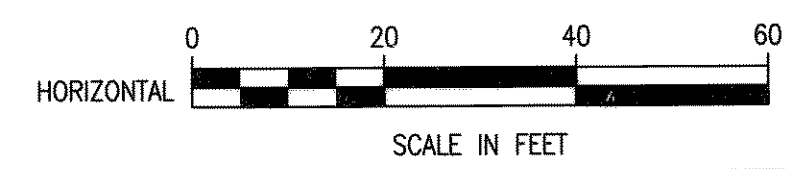
ARKOMA REALTY LTD.
VOL. 2279, PG. 273

J.H.B. JONES SURVEY
ABSTRACT NO. 124

B.M. NO. 1
N 10812.9247, E 11700.5473
STA. 0+37.02, 16.95' RT.
CONCRETE RIGHT-OF-WAY MONUMENT
ELEV. 478.39

B.M. NO. 2
N 10881.8491, E 11764.5560
CONCRETE RIGHT-OF-WAY MONUMENT
ELEV. 477.13

STA. 3+00
FURNISH & INSTALL:
1-2" COMB. AIR &
VACUUM REL. VALVE

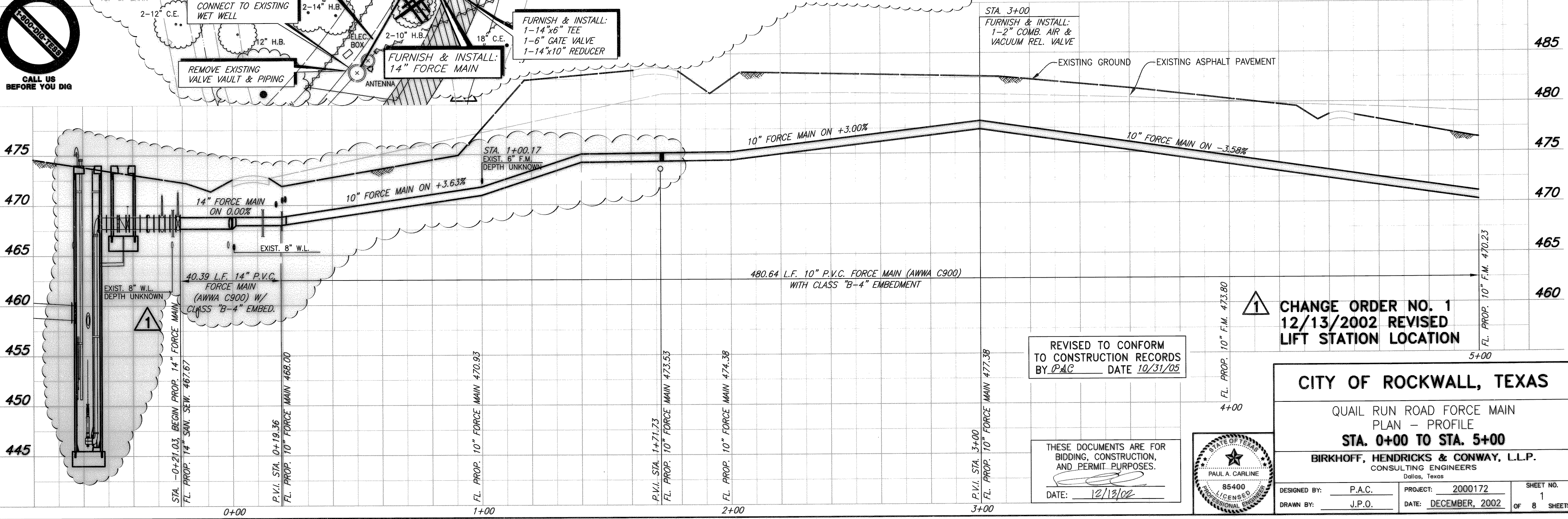


These plans and related specifications
were prepared for construction of this
specific project only. Reuse of these
documents is not permitted without
written authorization of Birkhoff,
Hendricks, & Conway, L.L.P.

WARNING
T.X.U. GAS LINE
NOTIFY T.X.U. GAS
72 HOURS PRIOR TO
EXCAVATION



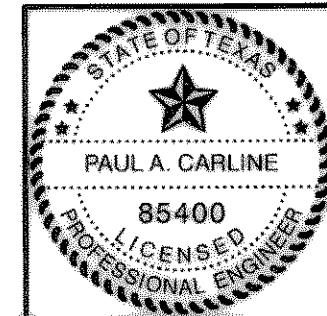
Revised: 10/31/05 MO
 H:\Projects\Rockwall\2000172\Plans\Sheets\2000172-501.dwg
 Xrefs: Master 172, Master 172 Profile



CHANGE ORDER NO. 1
12/13/2002 REVISED
LIFT STATION LOCATION

REVISED TO CONFORM
TO CONSTRUCTION RECORDS
BY PAC DATE 10/31/05

THESE DOCUMENTS ARE FOR
BIDDING, CONSTRUCTION,
AND PERMIT PURPOSES.
DATE: 12/13/02



CITY OF ROCKWALL, TEXAS

QUAIL RUN ROAD FORCE MAIN
PLAN - PROFILE
STA. 0+00 TO STA. 5+00

BIRKHOFF, HENDRICKS & CONWAY, L.L.P.
CONSULTING ENGINEERS
Dallas, Texas

DESIGNED BY: P.A.C.	PROJECT: 2000172	SHEET NO. 1
DRAWN BY: J.P.O.	DATE: DECEMBER, 2002	OF 8 SHEETS