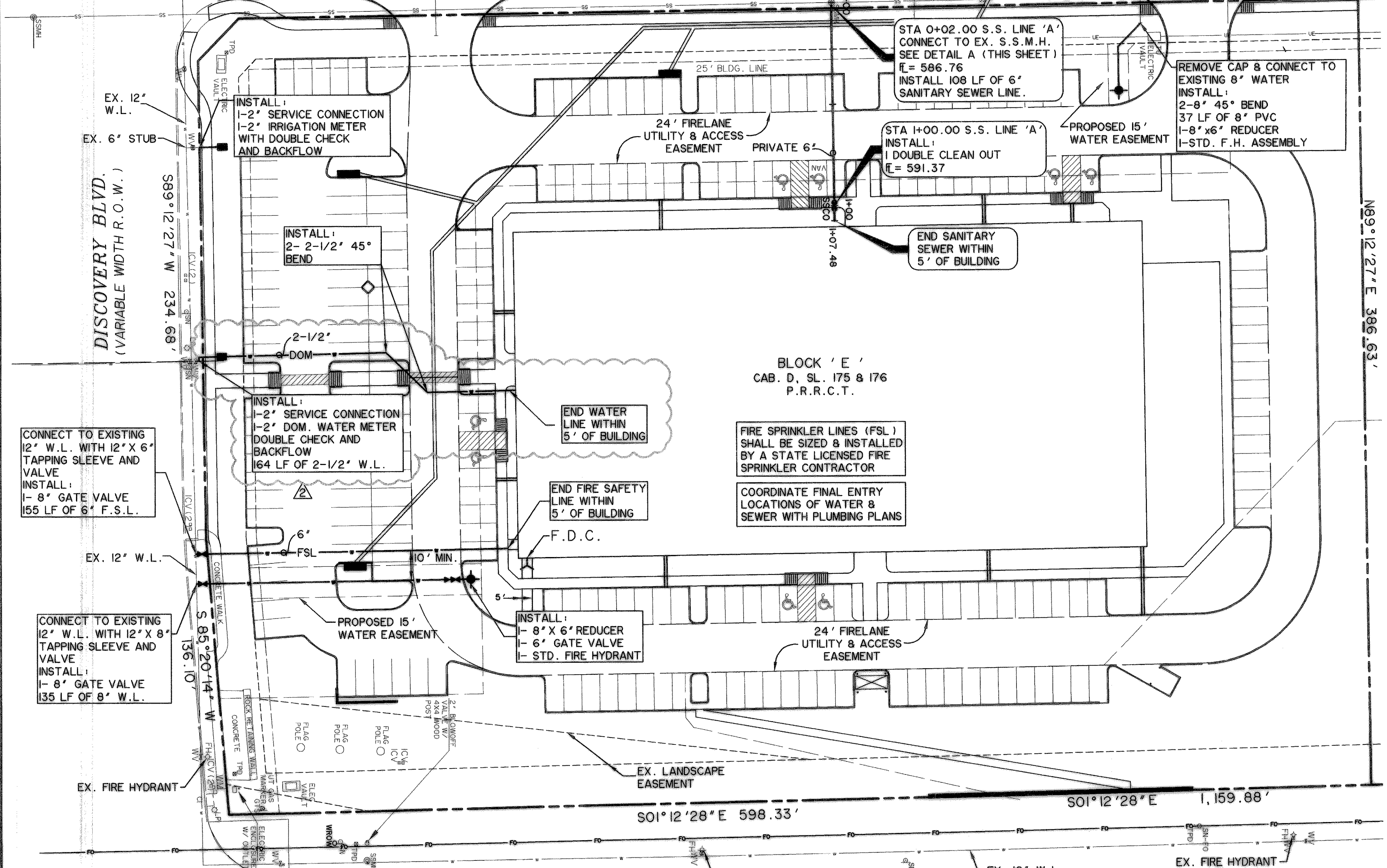
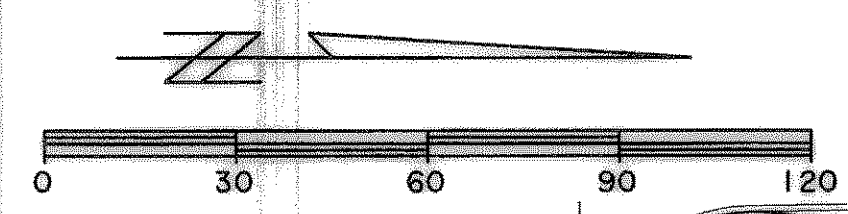
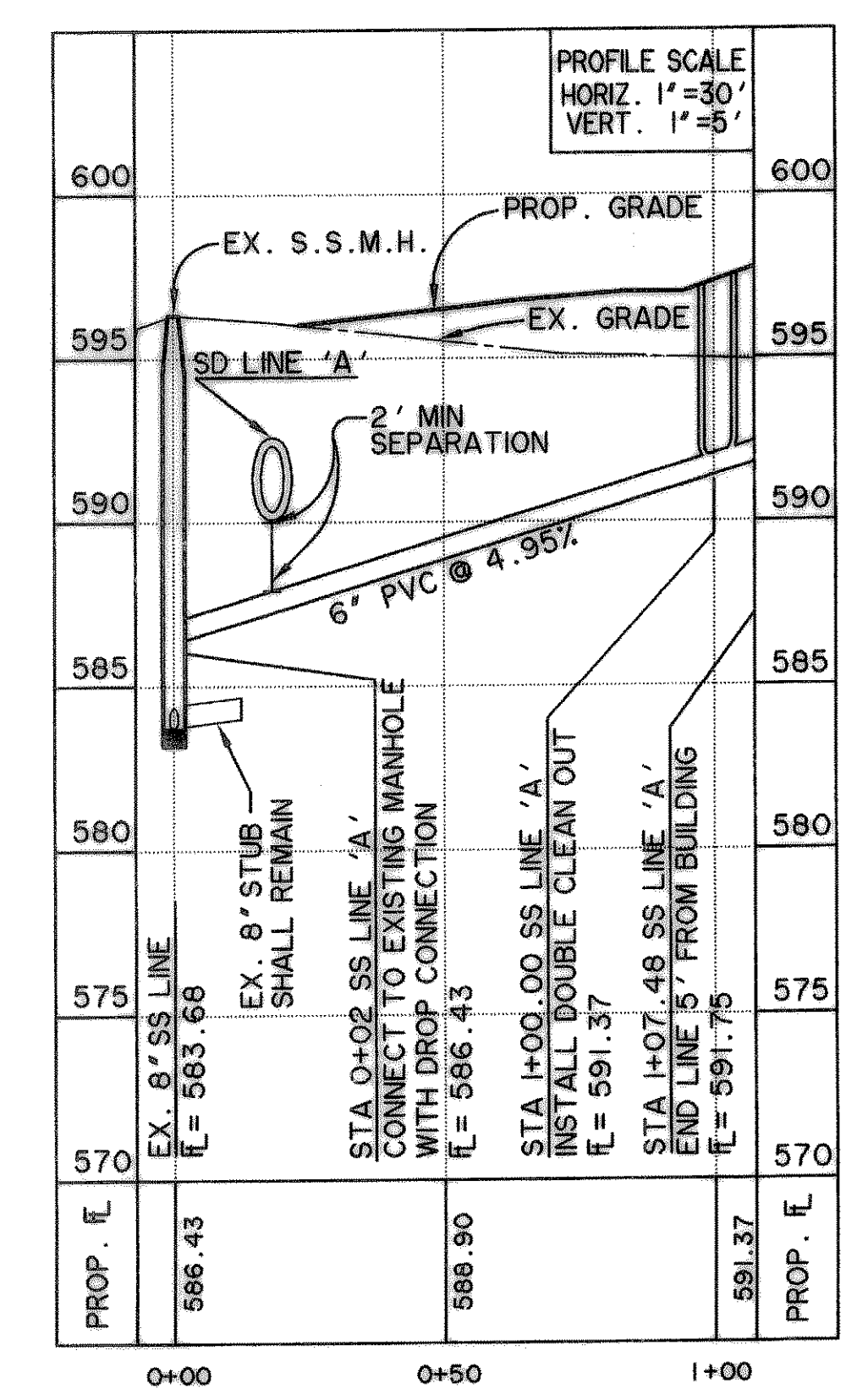


*** BENCH MARKS ***
 BM A AN "X" IN THE MIDDLE OF INLET AT THE BACK OF CURB OF SCIENCE PLACE +/- 90 FEET SOUTH OF THE INTERSECTION OF THE CENTERLINES OF SCIENCE PLACE AND OBSERVATION TRAIL. 592.68 FT.
 BM B AN "X" CUT ON THE EAST MEDIAN NOSE DISCOVERY BOULEVARD +/- 90 FEET WEST OF THE INTERSECTION OF DISCOVERY BOULEVARD AND F.M. 549. 598.20 FT.

LEGEND

	EXISTING WATER LINE
	PROP. FIRE HYDRANT & VALVE
	PROP. WATER VALVE
	PROP. FIRE SERVICE LINE
	PROP. IRRIGATION SERVICE
	PROP. WATER METER
	PROP. 8" SANITARY SEWER
	PROP. 6" SANITARY SEWER
	PROP. SANITARY SEWER CLEAN OUT
	PROP. SANITARY SEWER CLEAN OUT
	PROPOSED GRADE CONTOUR
	EXISTING CONTOUR
	PROP. STORM DRAIN
	PROP. INLET

S.S. LINE 'A' PROFILE



CAUTION !!!
 UNDERGROUND UTILITIES

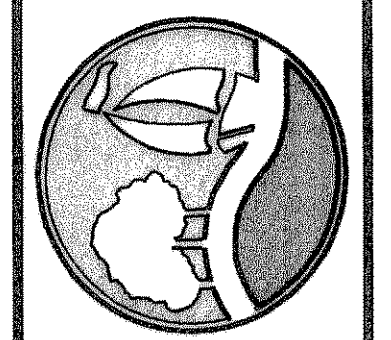
EXISTING UTILITIES AND UNDERGROUND FACILITIES INDICATED ON THESE PLANS HAVE BEEN LOCATED FROM REFERENCE INFORMATION SUPPLIED BY VARIOUS OWNERS OF THE FACILITIES. THE ENGINEER DOES NOT ACCEPT THE RESPONSIBILITY FOR THE UTILITY LOCATIONS SHOWN, IT SHALL BE THE RESPONSIBILITY OF THE CONTRACTOR TO VERIFY BOTH HORIZONTALLY AND VERTICALLY THE LOCATION OF ALL EXISTING UTILITIES AND UNDERGROUND FACILITIES PRIOR TO CONSTRUCTION. TO TAKE NECESSARY PRECAUTIONS IN ORDER TO PROTECT ALL FACILITIES ENCOUNTERED, AND TO NOTIFY THE ENGINEER PROMPTLY OF ALL CONFLICTS OF THE WORK WITH EXISTING FACILITIES. THE CONTRACTOR SHALL PRESERVE AND PROTECT ALL EXISTING UTILITIES FROM DAMAGE DURING CONSTRUCTION. ANY DAMAGE BY THE CONTRACTOR TO EXISTING UTILITIES SHALL BE REPAIRED BY THE CONTRACTOR AT HIS EXPENSE.

F.M. 549

- REVISED SD ALIGNMENT - 3/25/09
- REV. SERVICE CONNECTION AT BUILDING - 3/10/09
- REV. SERVICE CONNECTION TO 2' - 2/11/09

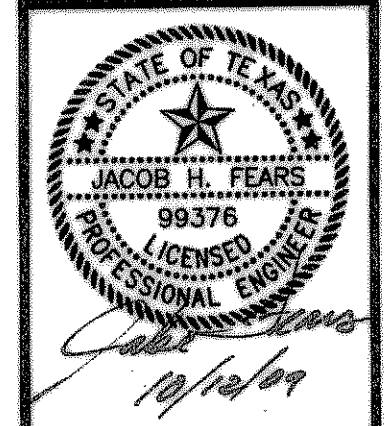
RECORD DRAWING

PREPARED BY:
WIER & ASSOCIATES, INC.
 ENGINEERS SURVEYORS LAND PLANNERS
 701 HIGHLANDER BLVD., SUITE 300 ARLINGTON, TEXAS 76015 METRO (817) 467-7700
 6849 ELM STREET FRISCO, TEXAS 75034 METRO (214) 387-8800
 Texas Firm Registration No. F-2776 www.wierassociates.com



ROCKWALL TECHNOLOGY PARK PHASE I
UTILITY PLAN
 ROCKWALL, TEXAS

UTILITY PLAN



COPYRIGHT © WIER & ASSOCIATES, INC.
 LAST SHEET EDIT DATE 10-12-2009
 WA# 06037
SHEET NO. U101