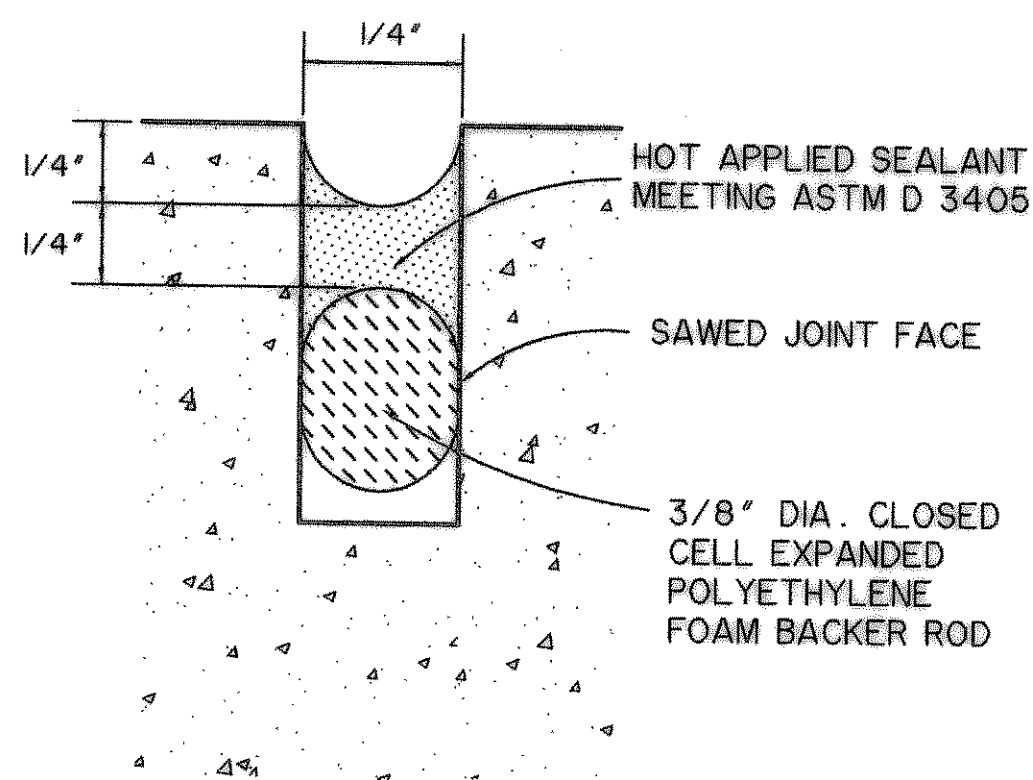


**JOINT SEALANT DETAIL No. 1
SEAL FOR EXPANSION JOINT**

N.T.S.



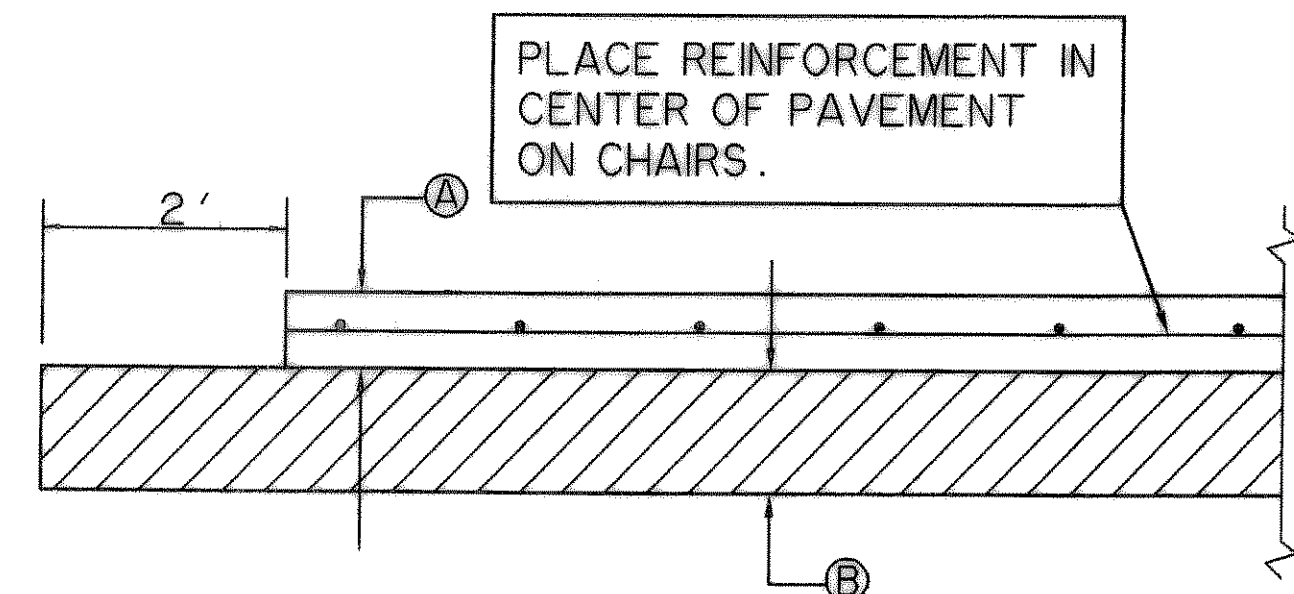
**JOINT SEALANT DETAIL No. 2
SEAL FOR SAWED,
CONSTRUCTION & BUTT JOINT**

N.T.S.

JOINT NOTES:

T = PAVEMENT THICKNESS

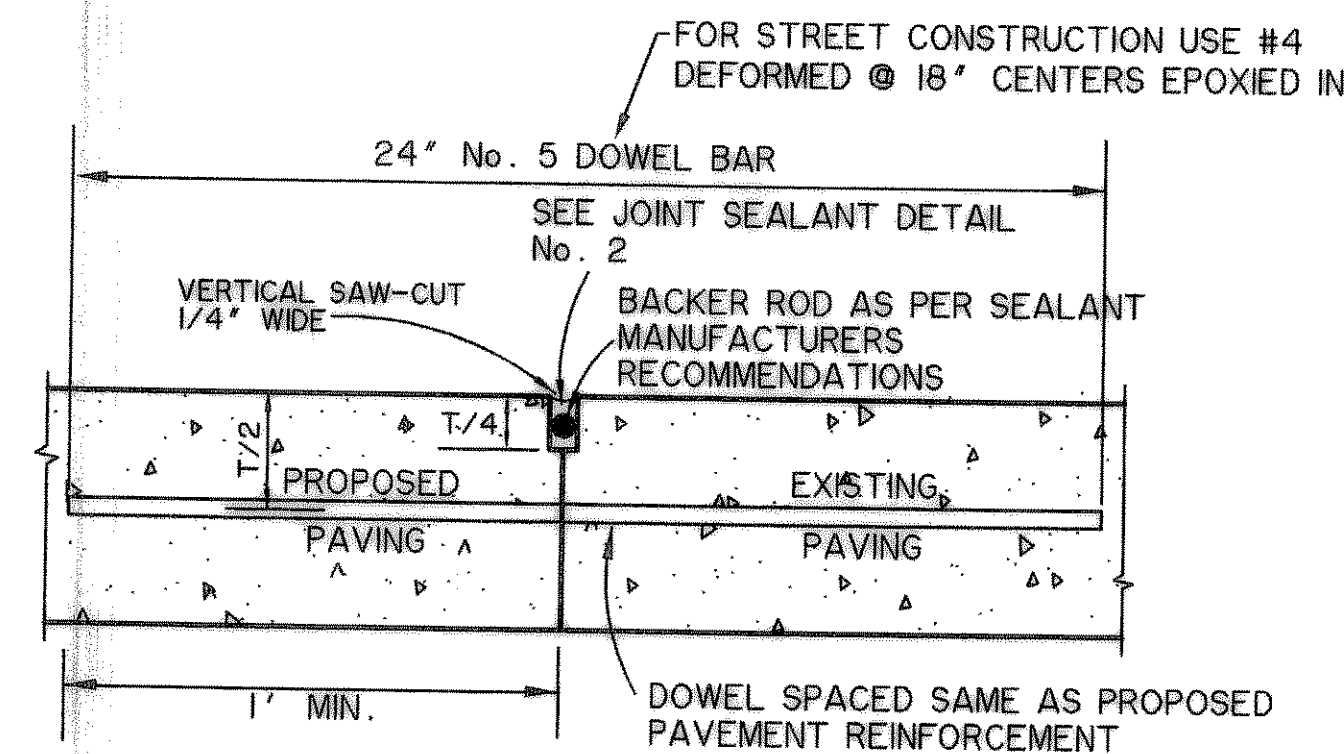
1. DOWEL BARS PLACED INTO EXISTING PAVEMENT SHALL BE DRILLED INTO PAVEMENT HORIZONTALLY BY USE OF A MECHANICAL RIG. DRILLING BY HAND IS NOT ACCEPTABLE. PUSHING DOWEL BARS INTO GREEN CONCRETE IS NOT ACCEPTABLE. SECURE DOWEL BARS IN EXISTING PAVING WITH EPOXY GROUT.
2. POLYETHYLENE FOAM BACKER ROD DOES NOT SIT ON BOTTOM OF SAW-CUT JOINT. PLACE AT DEPTH INDICATED IN DETAIL.
3. IF SEALANT PROTRUDES ABOVE THE SURFACE OF THE PAVEMENT, IT MUST BE REMOVED AND REPLACED.
4. SUBMIT MANUFACTURER'S LITERATURE FOR SEALANT, DOCUMENTING PRODUCT COMPLIES WITH ASTM SPECIFICATIONS AND PROVIDING MANUFACTURER'S RECOMMENDATIONS FOR APPLICATION. FOLLOW MANUFACTURER'S RECOMMENDATIONS ON USE OF THE PRODUCT.
5. THE CONSTRUCTION JOINT IS TO BE USED BETWEEN SEPARATE POURS OF PROPOSED PAVEMENT. NOTE THAT IT REQUIRES THE REINFORCEMENT TO BE EXTENDED THROUGH THE FORM TO TIE TO THE NEXT POUR. THE BUTT JOINT IS TO BE USED BETWEEN EXISTING CONCRETE PAVEMENT (STREET OR DRIVEWAY) AND PROPOSED PAVEMENT, UNLESS AN EXPANSION JOINT IS CALLED FOR.



CONCRETE PAVEMENT SECTION

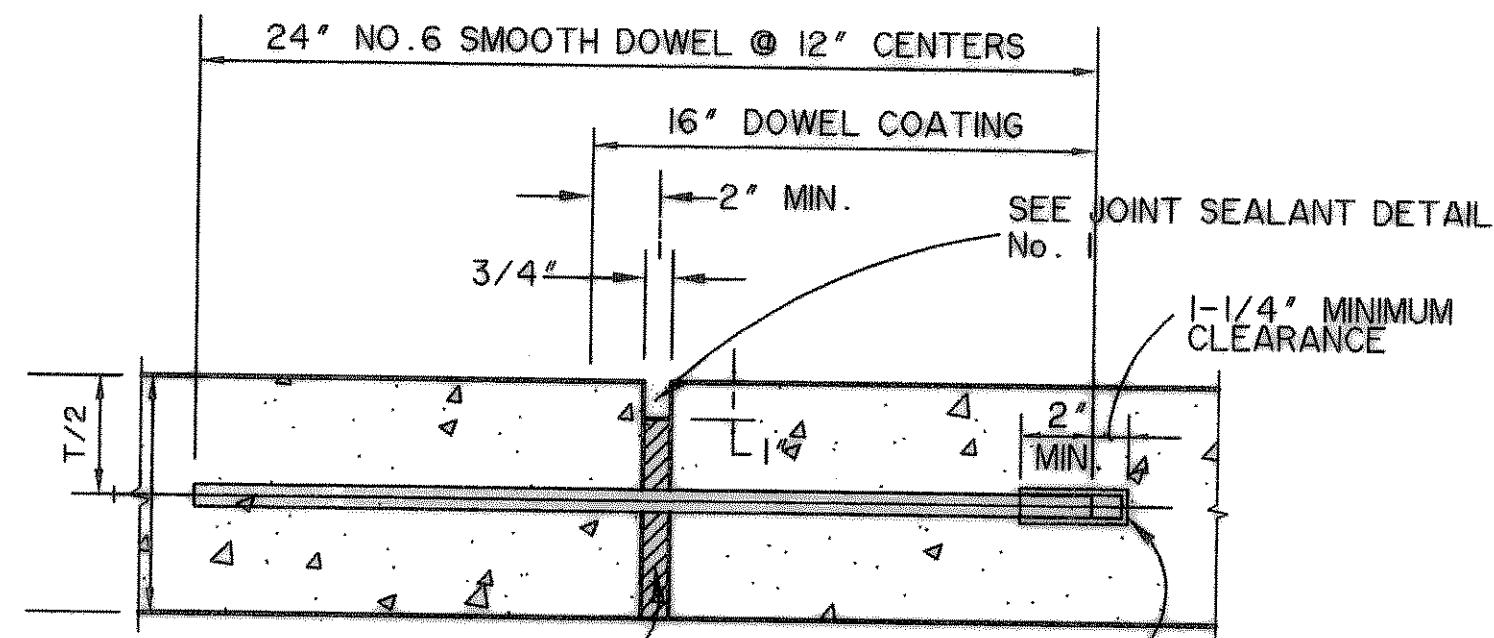
NOTES:

1. **PAVEMENT SECTION**
 - A. **LIGHT DUTY**
5' 6 SACKS BY MACHINE & 6.5 SACKS BY HAND PORTLAND CEMENT REINFORCED WITH MIN. #3 BARS AT 18" C/C PLACED ON CHAIRS.
 - FIRE LANE**
6' 6 SACKS BY MACHINE & 6.5 SACKS BY HAND PORTLAND CEMENT REINFORCED WITH MIN. #3 BARS AT 18" C/C PLACED ON CHAIRS.
 - DUMPSTER PAD**
7' 6 SACKS BY MACHINE & 6.5 SACKS BY HAND PORTLAND CEMENT REINFORCED WITH MIN. #3 BARS AT 18" C/C PLACED ON CHAIRS.
2. **6" LIME STABILIZED SUBGRADE WITH 7% LIME (BY DRY SOIL WEIGHT) TO A DEPTH OF 6 INCHES. LIME STABILIZATION SHOULD BE PERFORMED IN ACCORDANCE WITH ITEM 260. CURRENT STANDARD SPECIFICATIONS FOR CONSTRUCTION AND MAINTENANCE OF HIGHWAYS, STREETS, AND BRIDGES, TEXAS DEPARTMENT OF TRANSPORTATION (TxDOT) OR APPLICABLE STANDARDS.**
3. MATERIAL AND CONSTRUCTION METHODS SHALL CONFORM TO THE APPLICABLE PROVISIONS OF THE 3RD EDITION STANDARD SPECIFICATIONS FOR PUBLIC WORKS CONSTRUCTION PREPARED BY THE NORTH CENTRAL TEXAS COUNCIL OF GOVERNMENTS AND CITY OF ROCKWALL STANDARDS. COARSE AGGREGATE FOR CONCRETE SHALL BE GRADE No. 2. AIR ENTRAINMENT SHALL BE MIN. 6% +/- 1.5% AND, AS A MINIMUM, THE SECTION SHOULD BE REINFORCED WITH NO. 3 BARS ON 18 INCH CENTERS IN BOTH DIRECTIONS.
4. DO NOT PLACE SAND OR SELECT FILL BENEATH PAVEMENT FOR LEVEL UP COURSE.
5. PAVEMENT DESIGNED BASED ON RECOMMENDATION FROM THE GEOTECHNICAL ENGINEERING STUDY PREPARED BY FUGRO CONSULTANTS, INC., DATED DECEMBER 2008. PROJECT NO. 04-4008-1168)



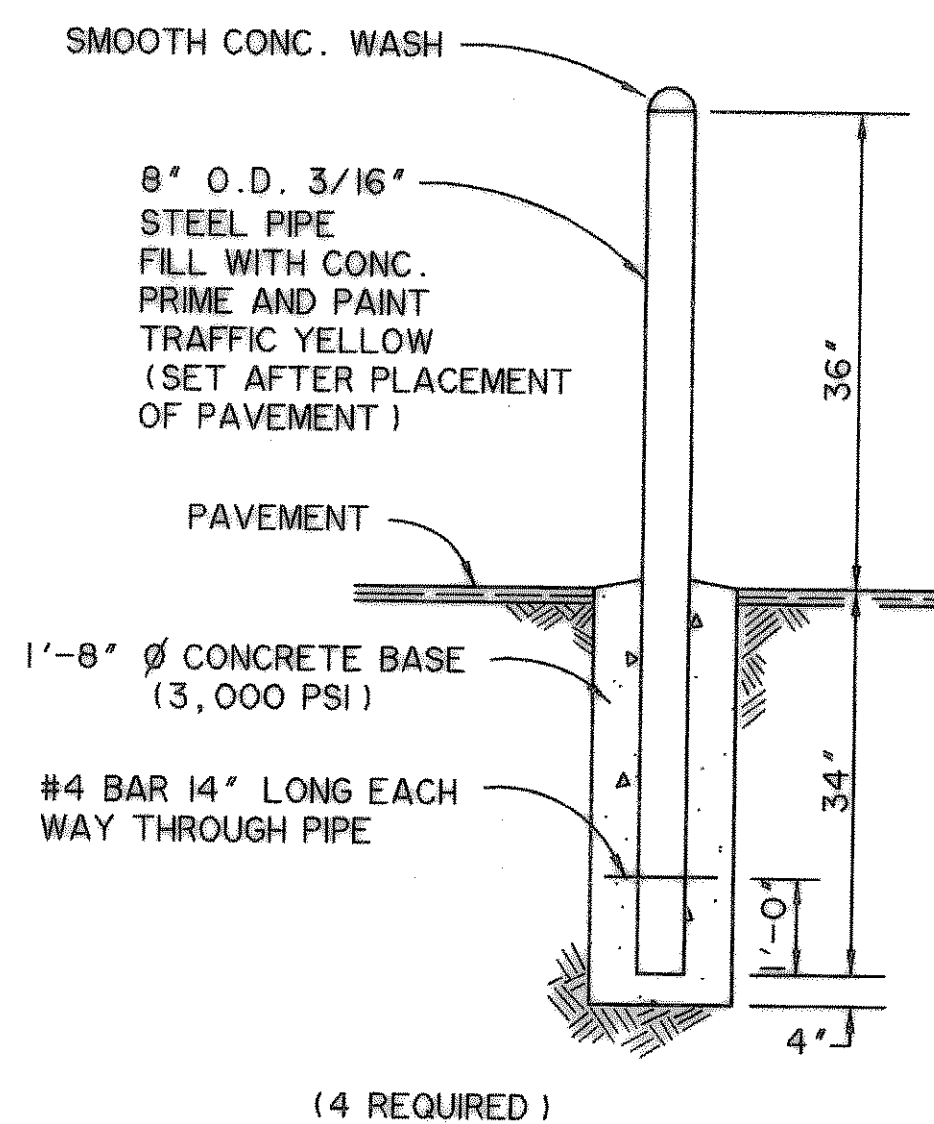
BUTT JOINT

N.T.S.



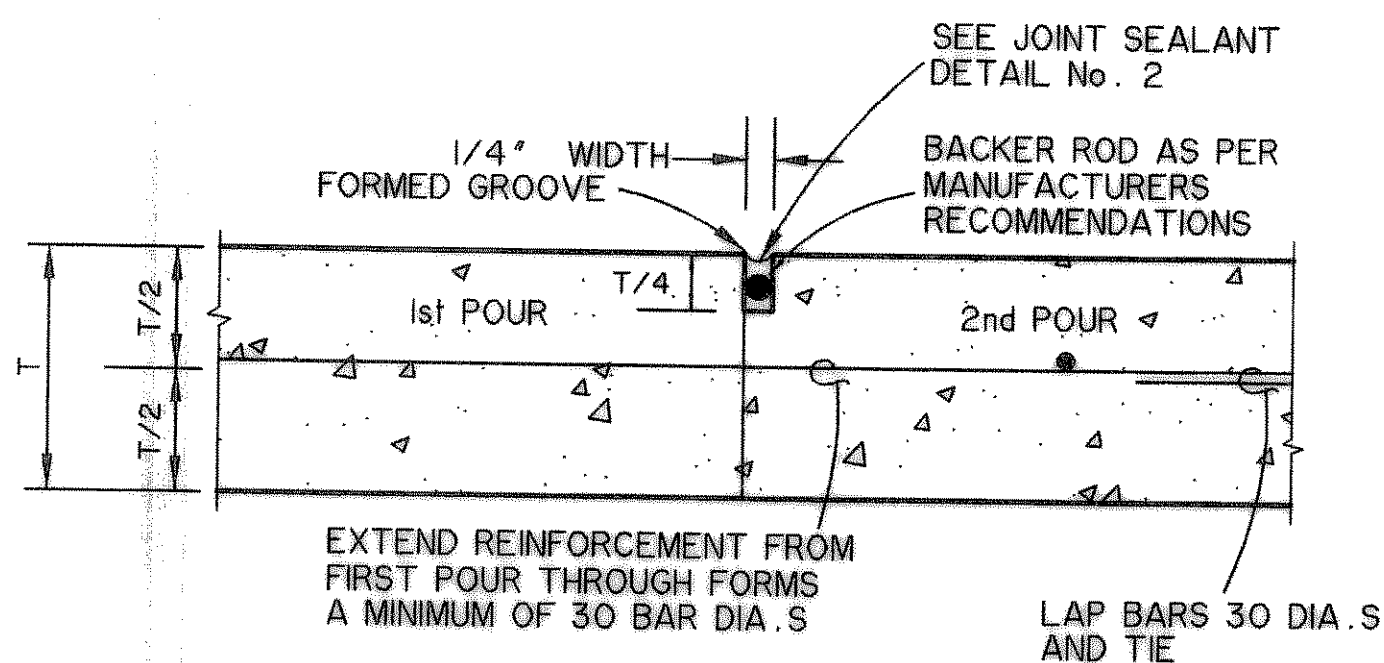
EXPANSION JOINT

N.T.S.



BOLLARD

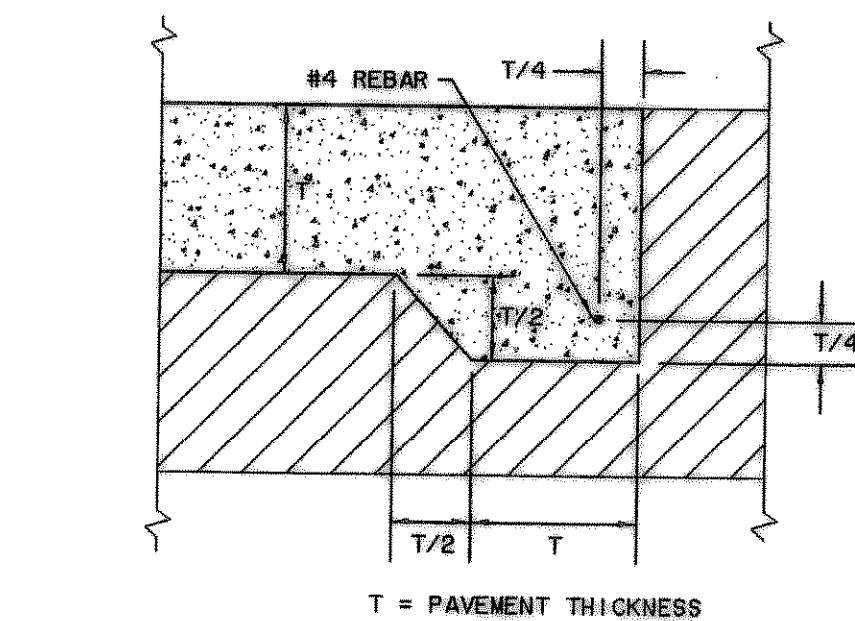
N.T.S.



CONSTRUCTION JOINT

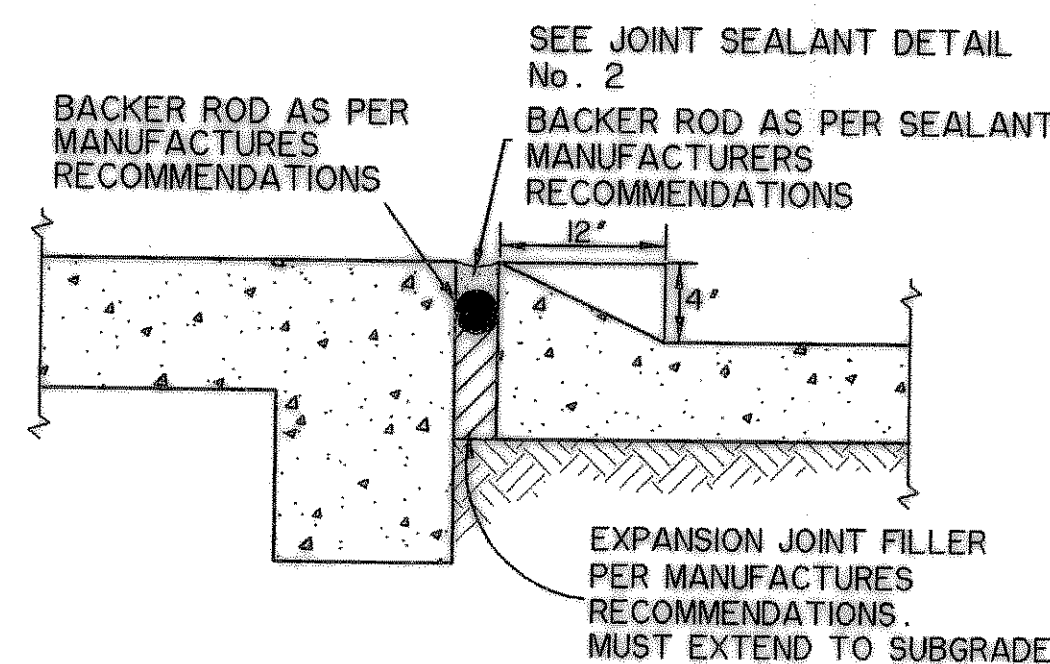
N.T.S.

USE CONSTRUCTION JOINT BETWEEN PAVEMENT POURS IF CONCRETE PLACEMENT IS INTERRUPTED OR STOPPED FOR MORE THAN 30 MINUTES.



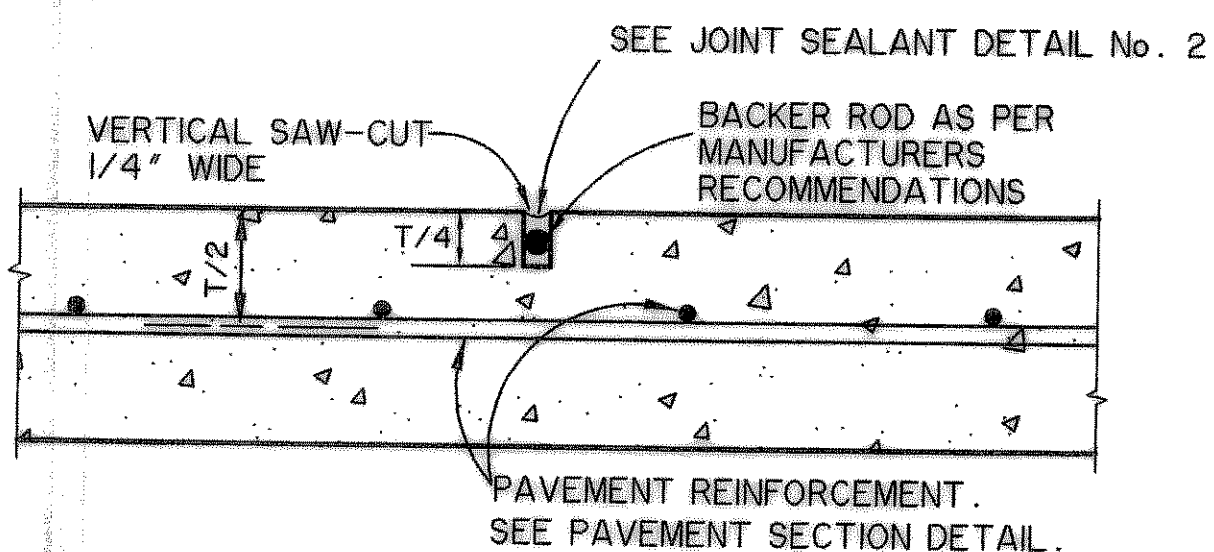
THICKENED EDGE DETAIL

N.T.S.



BUILDING ISOLATION JOINT

N.T.S.

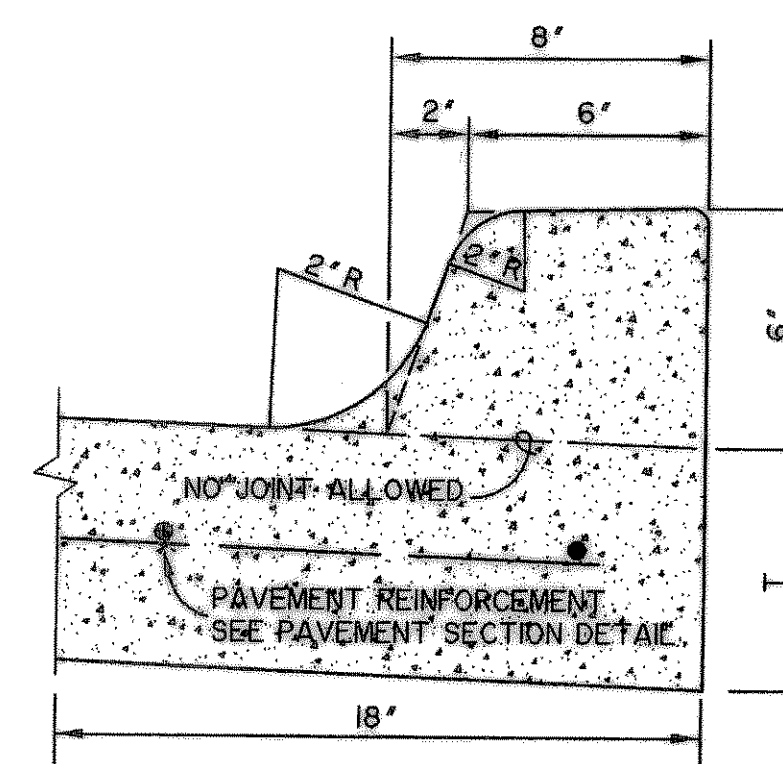


SAWED CONTRACTION JOINT

N.T.S.

PAVEMENT SECTION

N.T.S.



STANDARD CURB

N.T.S.

NOTE:
THESE PAVING DETAILS ARE FOR SPECIFIC ON SITE, PRIVATE IMPROVEMENTS CONSTRUCTION ONLY. PLEASE REFER TO THE CITY OF ROCKWALL PUBLIC IMPROVEMENT DETAILS FOR ALL PAVEMENT, SIDEWALKS OR DRIVEWAY CONSTRUCTION WITHIN CITY RIGHT-OF-WAY.

RECORD DRAWING

