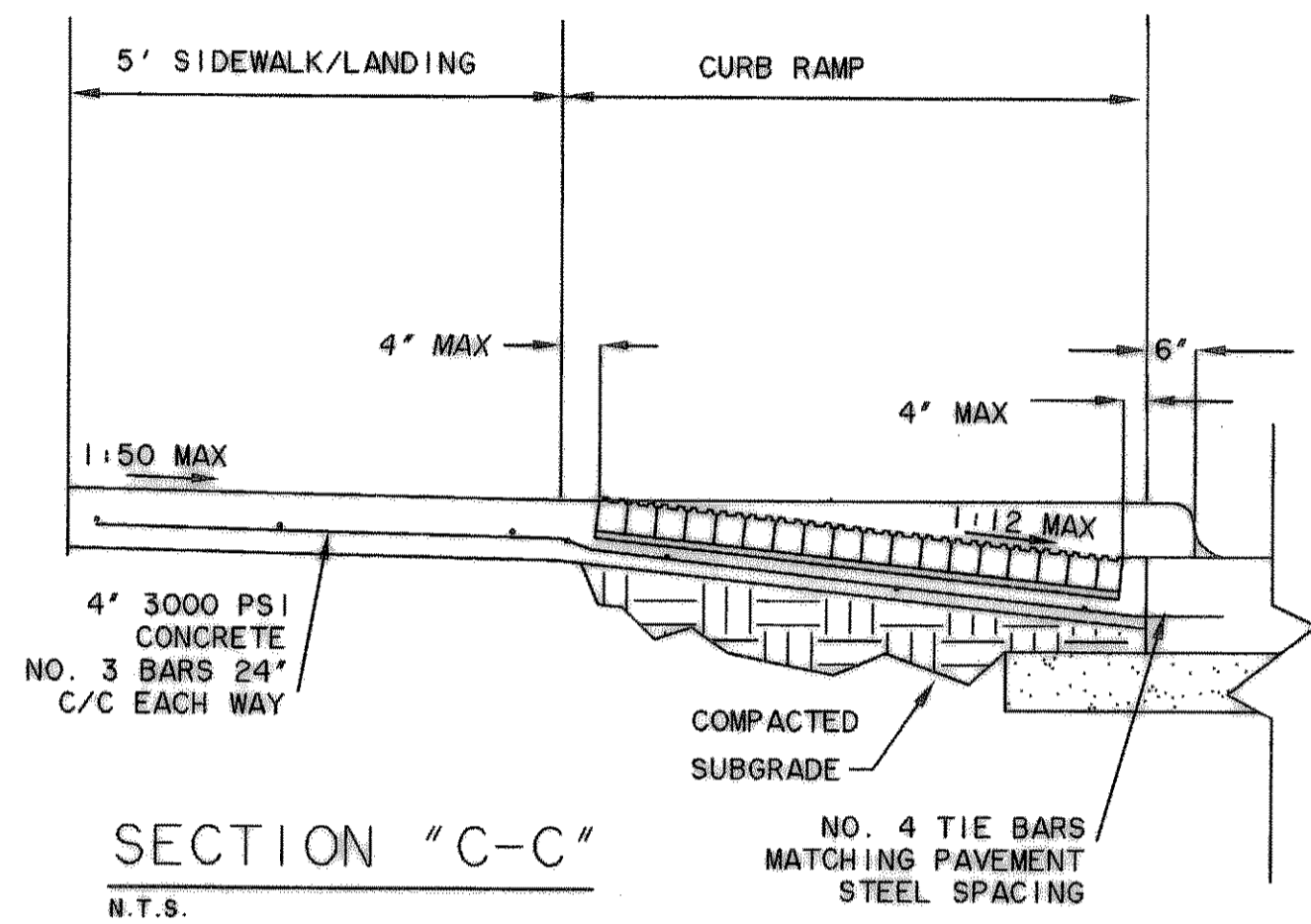


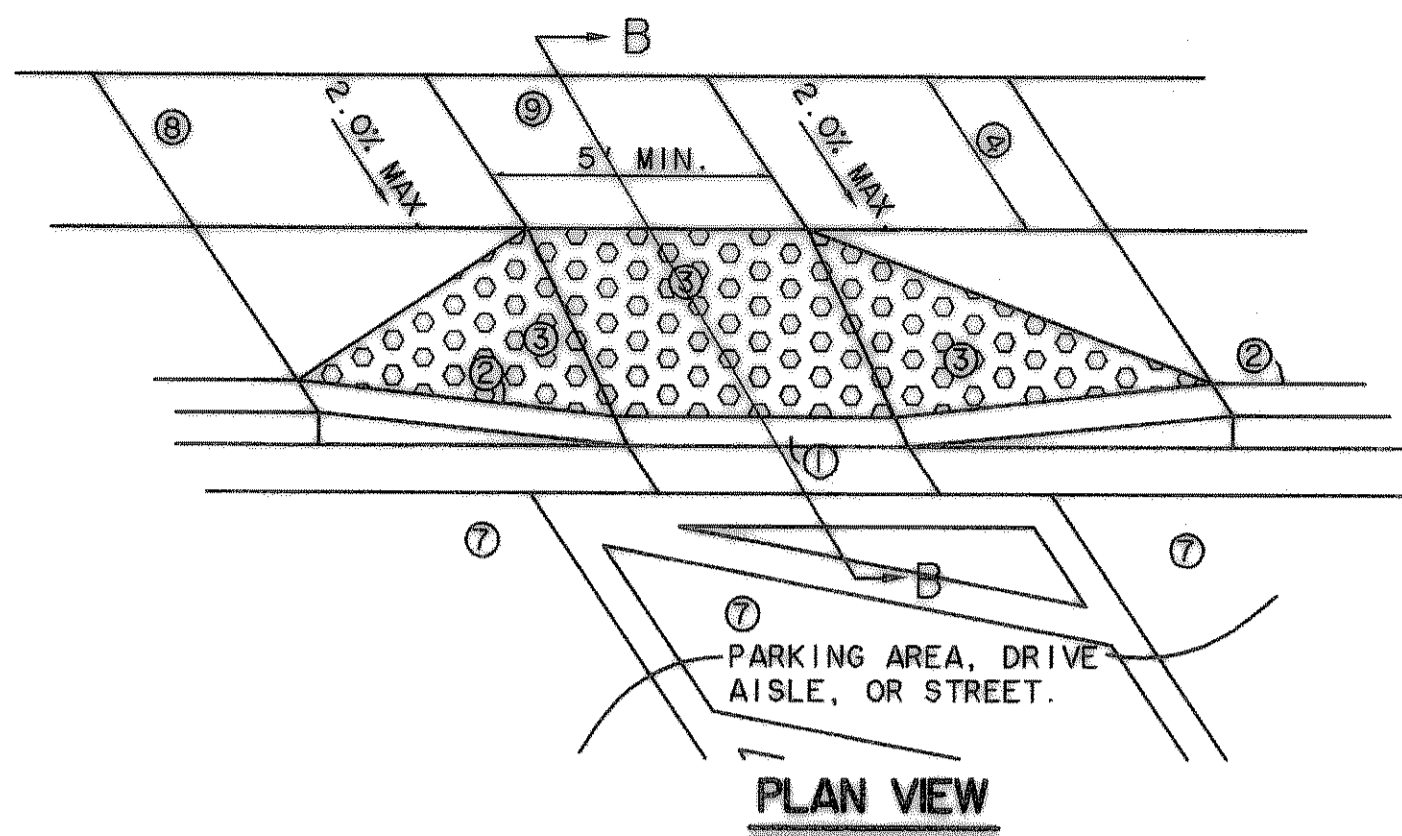
PLAN VIEW

\* THESE DETAILS ARE FOR ONSITE CURB RAMP. ALL OTHER CURB RAMP WITHIN PUBLIC RIGHT-OF-WAY SHALL BE CONSTRUCTED IN COMPLIANCE WITH LOCAL CITY CODES AND DETAILS.

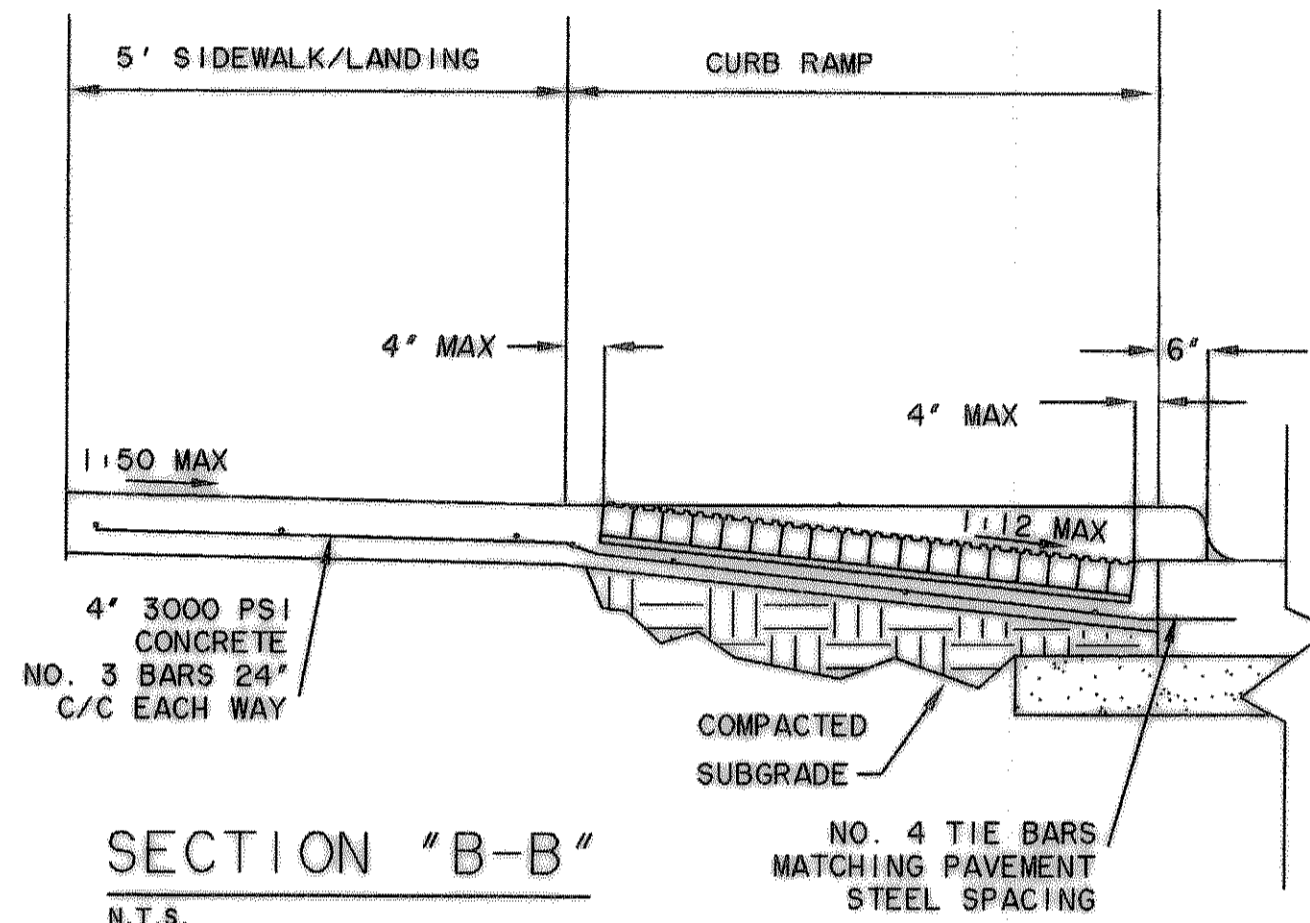


SECTION "C-C"  
N.T.S.

\* TYPE-1 CURB RAMP  
N.T.S.

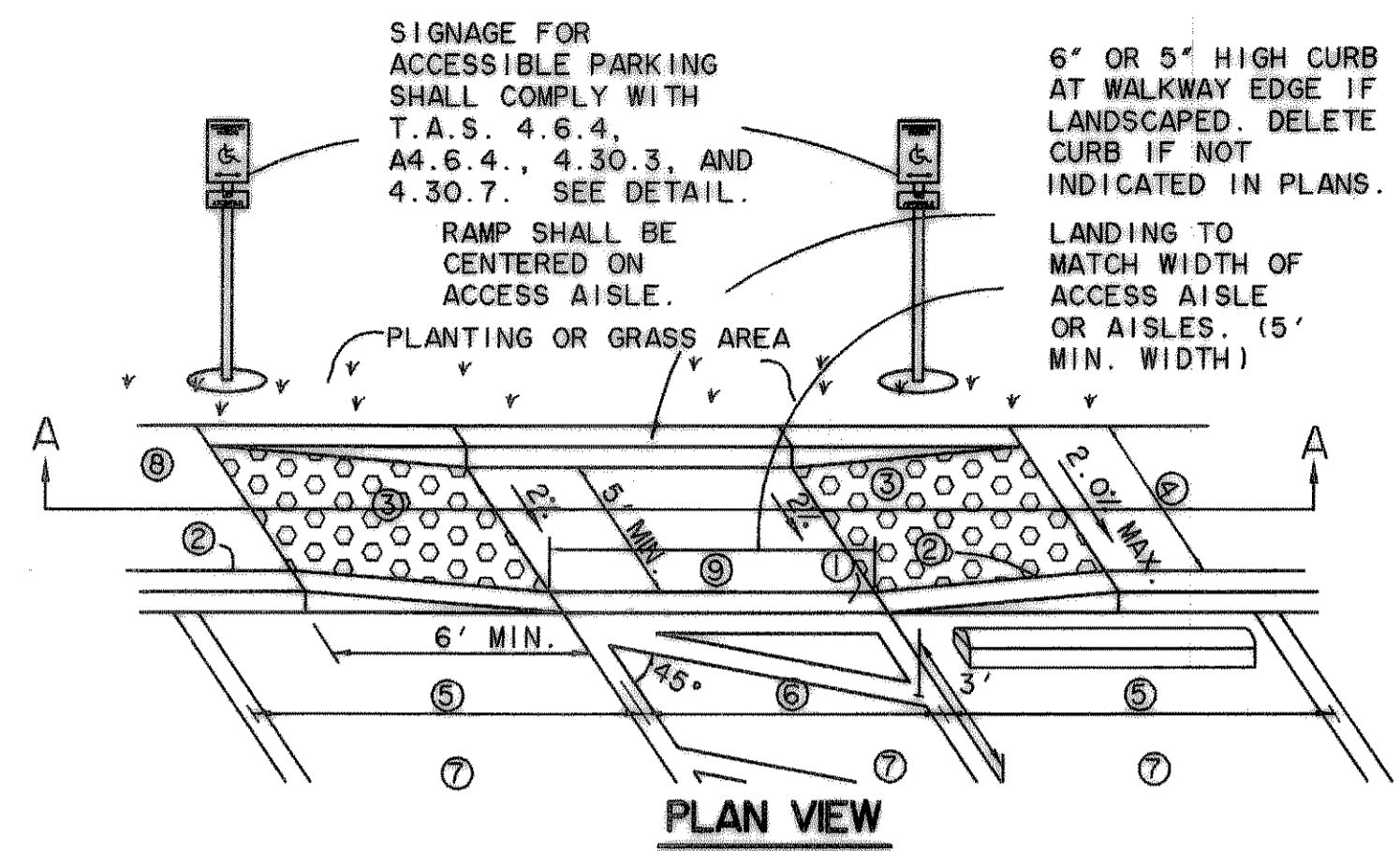


PLAN VIEW

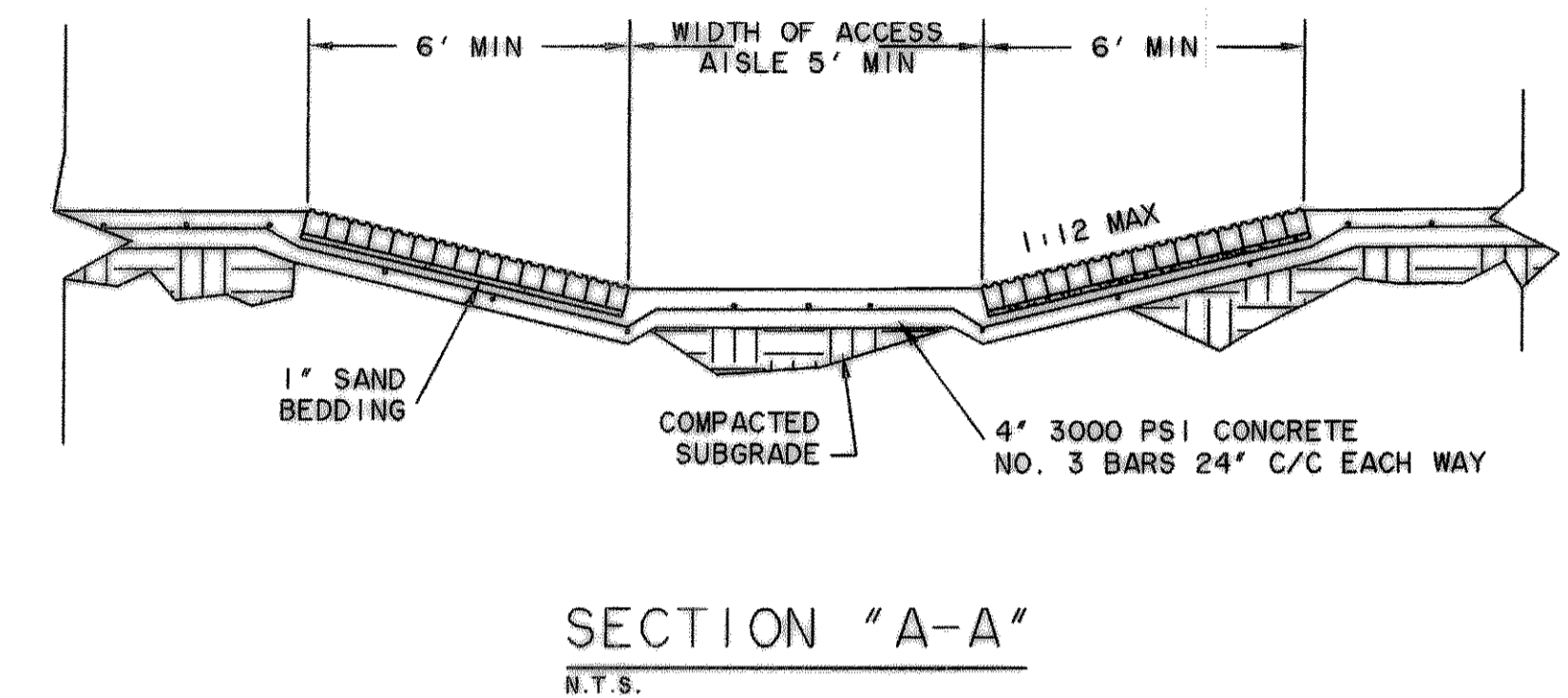


SECTION "B-B"  
N.T.S.

\* TYPE-2 CURB RAMP  
N.T.S.

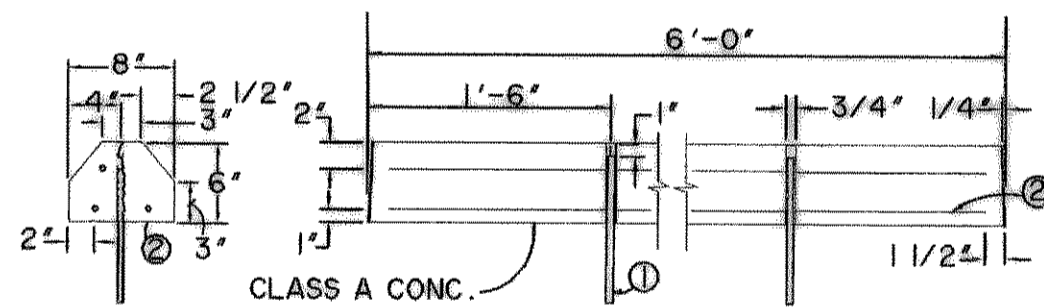


PLAN VIEW



SECTION "A-A"  
N.T.S.

\* TYPE-3 CURB RAMP  
N.T.S.



END VIEW SECTIONAL ELEVATION

PRECAST CONCRETE VEHICLE STOP DETAIL  
N.T.S. (ONLY ON 20' SPACES)

- ① NO. 5 BARS-18" MIN. LENGTH. FILL VOID WITH BUTYL RUBBER CAULKING (COMMERCIAL GRADE) OR OTHER APPROVED MATERIAL.
- ② NO. 3 DEFORMED BARS (OR LARGER) 3 REQUIRED.
- ③ THE MINIMUM REQUIREMENT FOR REINFORCING STEEL SHALL BE GRADE 40. THE UNIT WEIGHS APPROXIMATELY 38 POUNDS PER FOOT.
- ④ OTHER TYPES OF STOPS MAY BE PERMITTED IF APPROVED IN WRITING BY THE ARCHITECT.

1'-0" x 1'-6" x 0.08" ALUMINUM HANDICAPPED PARKING SIGN. SIGN TO READ "RESERVED PARKING" WITH IDENTIFICATION SYMBOL AND "VAN ACCESSIBLE" WHERE APPLICABLE. BOLT TO STEEL TUBE WITH 1/2" CADMIUM PLATED BOLTS, NUTS, AND WASHERS.

2" x 2" x .108" STEEL TUBE EXTEND INTO CONCRETE FILLED PIPE 2'-0". PROVIDE WELDED WATERTIGHT CAP.

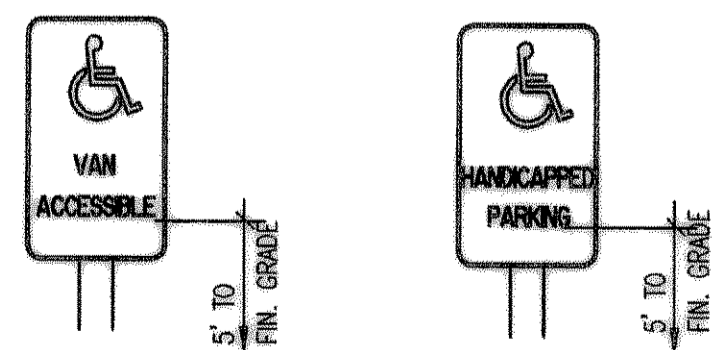
8" DIA. STD. STEEL PIPE FILLED WITH CLASS "A" CONCRETE. PROVIDE DOMED CEMENT WASH CAP. PAINT PIPE (2) COATS TRAFFIC YELLOW

1'-6" DIA. CONCRETE BASE

#6 BAR 14" LONG EACH WAY THROUGH PIPE

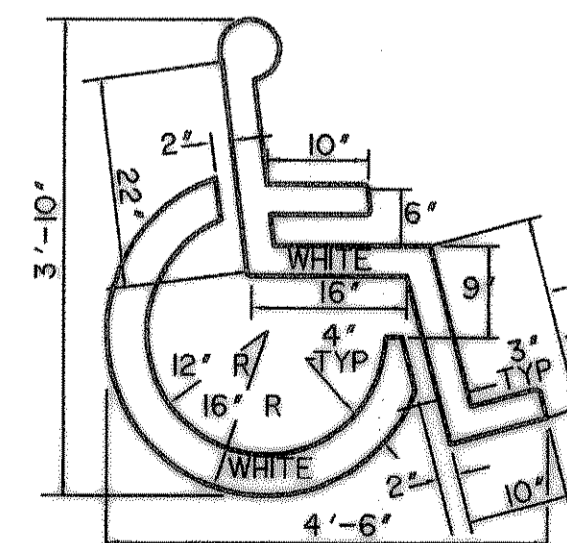
NOTE: WHERE SIGN IS LOCATED IN PLANTER AREA, USE 2" x 2" TUBE STEEL FULL LENGTH AND SET IN CONCRETE 3'-0" MIN. BELOW GRADE.

HANDICAPPED PARKING SIGN  
N.T.S.



PROVIDE & INSTALL VAN ACCESSIBLE (#SS57) & HANDICAPPED PARKING (#SS53) SIGNS EQUAL TO BEST SIGN SYSTEMS, MONTRORSE, COLORADO. GALVANIZED "U" CHANNEL MOUNTING POST SHALL BE SET IN A CONCRETE FOOTING. MOUNT SIGNS 5'-0" FROM THE BOTTOM OF LOWEST LINE OF LETTERING TO FINISH GRADE. SIGNS SHALL BE SCREEN PRINTED IN BLUE & WHITE ON .063" - ALUMINUM.

TYP. ACCESIBLE PARKING SIGNS  
N.T.S.



HANDICAPPED PARKING SPACE SYMBOL

SEE SPACES DESIGNATED H.C.  
N.T.S.

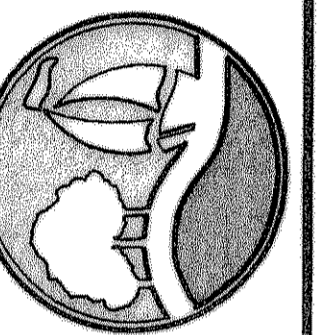
NOTES:

1. TOP OF CURB TO BE FLUSH WITH PAVEMENT.
2. TOP OF CURB TO BE FLUSH WITH TOP OF WALK.
3. DETECTABLE WARNINGS SHALL CONSIST OF RAISED TRUNCATED DOMES WITH A DIAMETER OF NOMINAL 0.9 IN (23MM), A HEIGHT OF NOMINAL 0.2 IN (5MM) AND A CENTER-TO-CENTER SPACING OF NOMINAL 2.35 IN (60MM) AND SHALL CONTRAST VISUALLY WITH ADJOINING SURFACES, EITHER LIGHT-ON-DARK, OR DARK-ON-LIGHT.
4. 36" MIN. IF PARKING STALL LENGTH IS 20' AND CURB STOPS ARE PROVIDED 2' OFF CURB. IF DIMENSION IS LESS THAN 48", THEN THE SLOPE OF THE FLARED SIDE SHALL NOT EXCEED 1:12.
5. ACCESSIBLE PARKING SPACE SHALL BE 8' MIN. AND SHALL COMPLY WITH T.A.S. 4.6.3. OPTIONAL UNIVERSAL PARKING SPACE SHALL BE 11' WIDE AND COMPLY WITH T.A.S. FIGURE A5b.
6. ACCESS AISLE SHALL BE 5' WIDE FOR TYPICAL OR UNIVERSAL ACCESSIBLE PARKING. ACCESS AISLE SHALL BE 8' WIDE FOR VAN ACCESSIBLE PARKING.
7. ACCESSIBLE PARKING SPACES AND ACCESS AISLE SHALL BE LEVEL WITH SURFACE SLOPES NOT EXCEEDING 1:50 (2%) IN ALL DIRECTIONS AND SHALL COMPLY WITH T.A.S. 4.6.3..
8. AN ACCESSIBLE ROUTE WITH A RUNNING SLOPE GREATER THAN 1:20 (5%) IS CONSIDERED A RAMP AND SHALL COMPLY WITH T.A.S. 4.8. THE CROSS SLOPE OF AN ACCESSIBLE ROUTE SHALL NEVER EXCEED 1:50 (2%).
9. LANDING DIMENSIONS AT TOP OF RAMP OR A CHANGE IN DIRECTION SHALL BE 5' X 5' MINIMUM.
10. GRADES IN ACESIBILITY ROUTING INCLUDE CROSSING DRIVEWAYS, SHALL CONFORM TO ADA STANDARDS, NOT TO EXCEED 5.0% ALONG TRAVEL PATH WITH NOT MORE THAN 2.0% CROSSFALL.

\* THESE DETAILS ARE FOR ONSITE CURB RAMP. ALL OTHER CURB RAMP WITHIN PUBLIC RIGHT-OF-WAY SHALL BE CONSTRUCTED IN COMPLIANCE WITH LOCAL CITY CODES AND DETAILS.

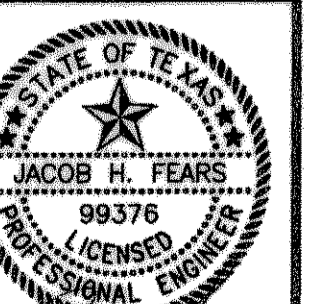
RECORD DRAWING

PREPARED BY:  
**WIER & ASSOCIATES, INC.**  
ENGINEERS SURVEYORS LAND PLANNERS  
701 HIGHLANDER BLDG., SUITE 300 ARLINGTON, TEXAS 76015 METRO (817)467-7700  
6849 ELM STREET FRESNO, TEXAS 75004 METRO (214)367-8000  
Texas Firm Registration No. F-2776 www.wierassociates.com



ROCKWALL TECHNOLOGY  
PARK  
PHASE I  
ROCKWALL, TEXAS

PRIVATE ON-SITE  
HANDICAP DETAILS



10/12/09

COPYRIGHT ©  
WIER & ASSOCIATES, INC.  
LAST SHEET EDIT  
DATE 10-12-2009  
WA# 08037

SHEET NO.  
P302