

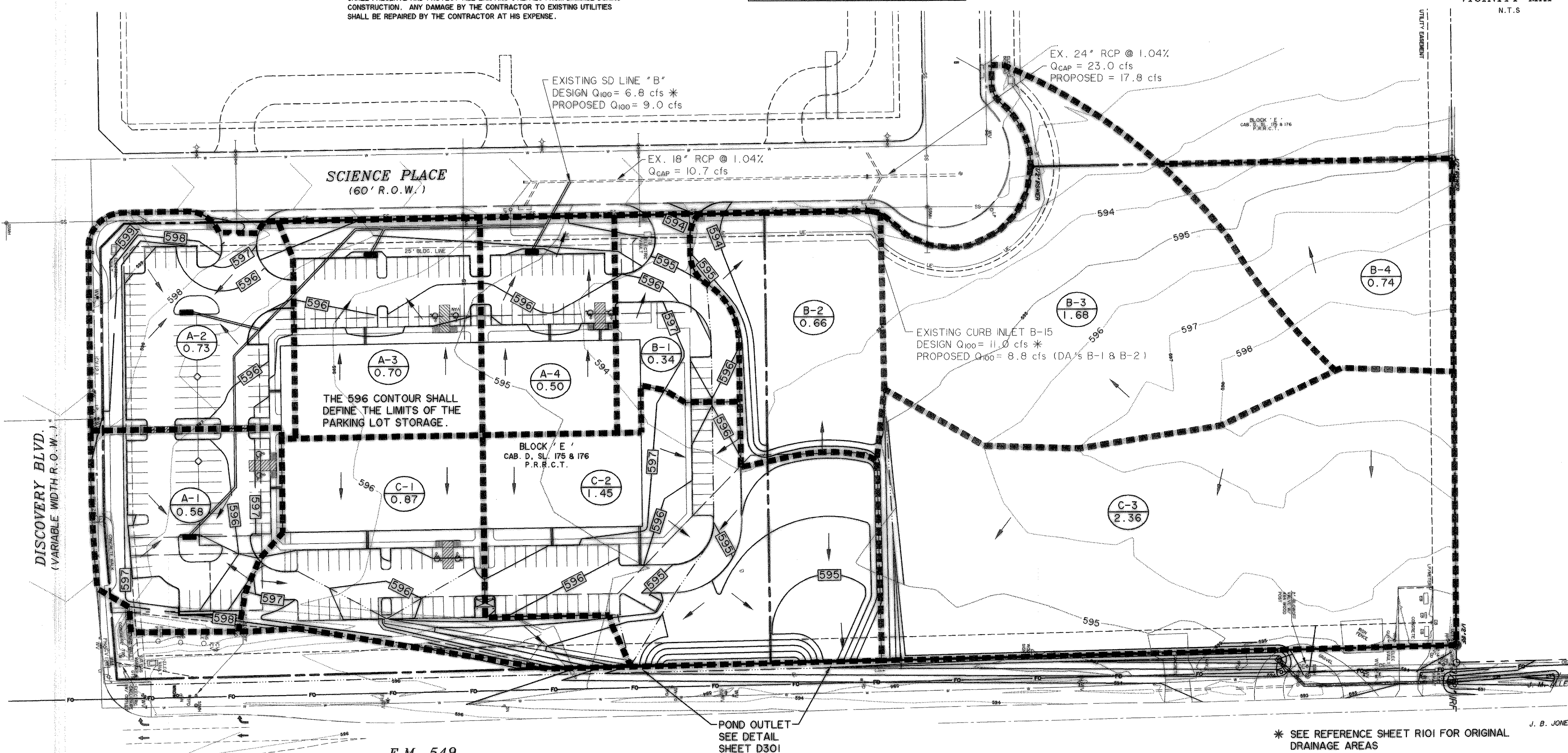
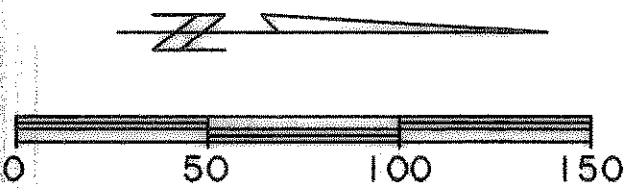
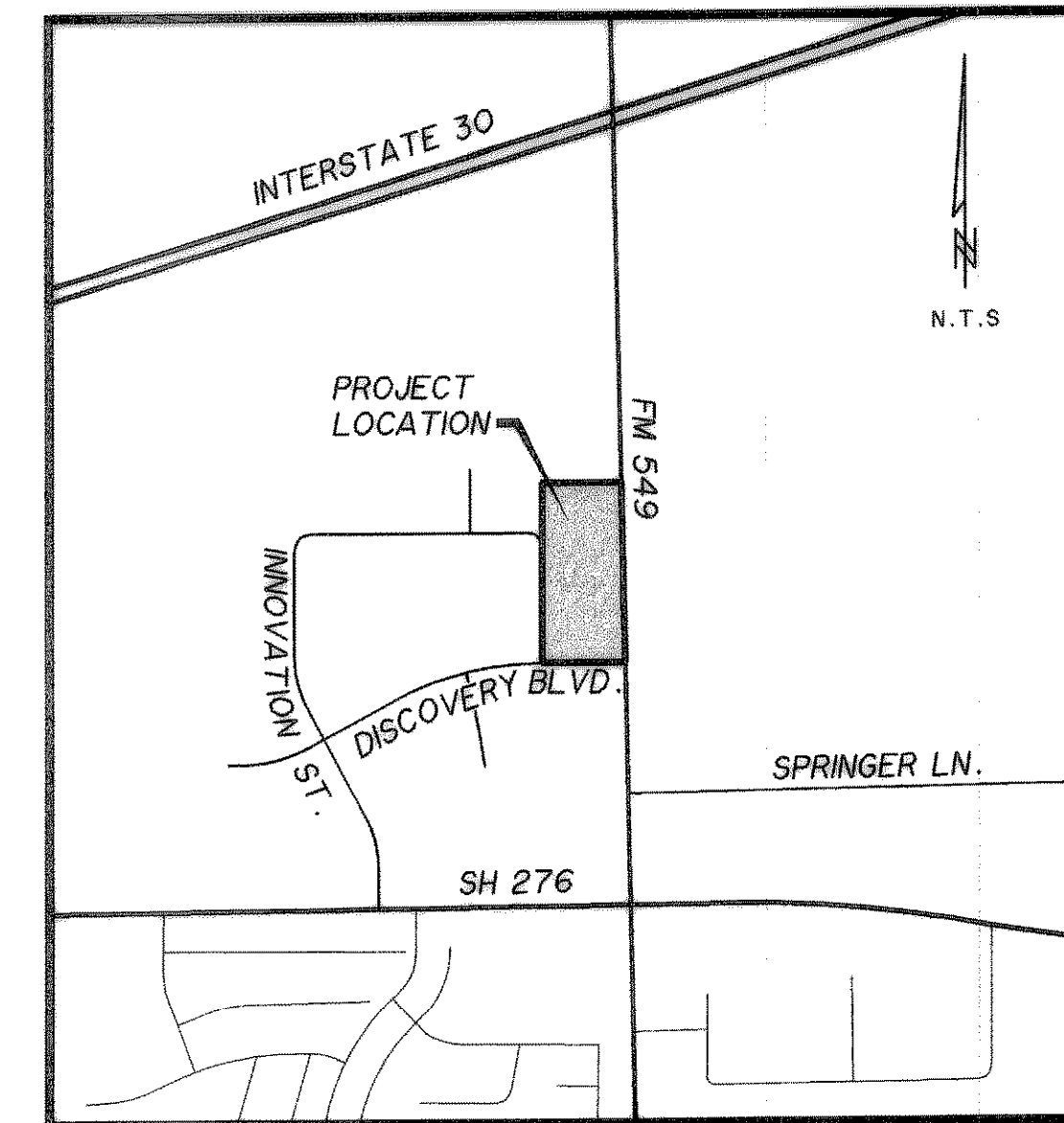
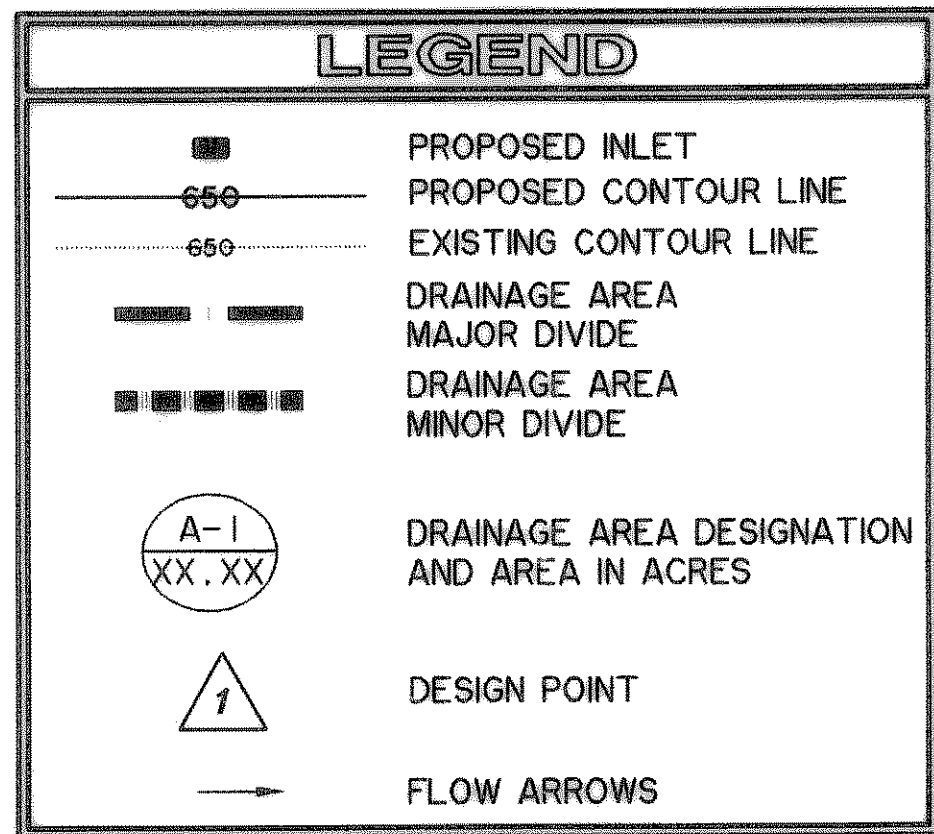
DRAINAGE AREA CALCULATIONS													
AREA DESIGNATION	AREA (ACRES)	RUN-OFF COEFFICIENT	CA	TIME OF CONC (MIN.)	$t_5$ (IN/HR)	$t_{10}$ (IN/HR)	$t_{25}$ (IN/HR)	$t_{100}$ (IN/HR)	$Q_5$ (CFS)	$Q_{10}$ (CFS)	$Q_{25}$ (CFS)	$Q_{100}$ (CFS)	REMARKS
A-1	0.58	0.9	0.52	10	6.1	7.4	8.4	9.8	3.2	3.9	4.4	5.1	PARKING LOT STORAGE
A-2	0.73	0.9	0.66	10	6.1	7.4	8.4	9.8	4.0	4.9	5.5	6.4	PARKING LOT STORAGE
A-3	0.70	0.9	0.63	10	6.1	7.4	8.4	9.8	3.8	4.7	5.3	6.2	PARKING LOT STORAGE
A-4	0.50	0.9	0.45	10	6.1	7.4	8.4	9.8	2.7	3.3	3.8	4.4	PARKING LOT STORAGE
B-1	0.34	0.9	0.31	10	6.1	7.4	8.4	9.8	1.9	2.3	2.6	3.0	RELEASED TO SCIENCE PLACE
B-2 <sup>1</sup>	0.66	0.9	0.59	10	6.1	7.4	8.4	9.8	3.6	4.4	5.0	5.8	UNDEVELOPED
B-3 <sup>2</sup>	1.68	0.9	1.51	10	6.1	7.4	8.4	9.8	9.2	11.2	12.7	14.8	UNDEVELOPED
B-4 <sup>2</sup>	0.74	0.9	0.67	10	6.1	7.4	8.4	9.8	4.1	4.9	5.6	6.5	UNDEVELOPED
C-1	0.87	0.9	0.78	10	6.1	7.4	8.4	9.8	4.8	5.8	6.6	7.7	DETAINED TO EX. CONDITIONS
C-2	1.45	0.9	1.31	10	6.1	7.4	8.4	9.8	8.0	9.7	11.0	12.8	DETAINED TO EX. CONDITIONS
C-3 <sup>3</sup>	2.36	0.35	0.83	20	4.9	5.9	6.6	8.3	4.0	4.9	5.5	6.9	UNDEVELOPED

1 Site is currently undeveloped, but designed for future undetained runoff with a 0.9 coefficient  
 2 Site is currently undeveloped, but may required future detention prior to entering the existing storm drain system in Science Pl. for runoff coefficients greater than 0.7.  
 3 Area to be detained to existing conditions prior to being released to TXDOT.

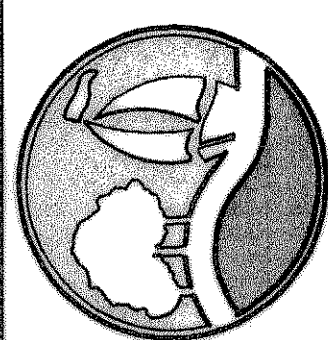
**CAUTION !!!**  
 UNDERGROUND UTILITIES

EXISTING UTILITIES AND UNDERGROUND FACILITIES INDICATED ON THESE PLANS HAVE BEEN LOCATED FROM REFERENCE INFORMATION SUPPLIED BY VARIOUS OWNERS OF THE FACILITIES. THE ENGINEER DOES NOT ACCEPT THE RESPONSIBILITY FOR THE UTILITY LOCATIONS SHOWN. IT SHALL BE THE RESPONSIBILITY OF THE CONTRACTOR TO VERIFY BOTH HORIZONTALLY AND VERTICALLY THE LOCATION OF ALL EXISTING UTILITIES AND UNDERGROUND FACILITIES PRIOR TO CONSTRUCTION, TO TAKE NECESSARY PRECAUTIONS IN ORDER TO PROTECT ALL FACILITIES ENCOUNTERED, AND TO NOTIFY THE ENGINEER PROMPTLY OF ALL CONFLICTS OF THE WORK WITH EXISTING FACILITIES. THE CONTRACTOR SHALL PRESERVE AND PROTECT ALL EXISTING UTILITIES FROM DAMAGE DURING CONSTRUCTION. ANY DAMAGE BY THE CONTRACTOR TO EXISTING UTILITIES SHALL BE REPAIRED BY THE CONTRACTOR AT HIS EXPENSE.

**\* BENCH MARKS \***  
 BM A AN "C" IN THE MIDDLE OF INLET AT THE BACK OF CURB OF SCIENCE PLACE +/- 80 FEET SOUTH OF THE INTERSECTION OF THE CENTERLINES OF SCIENCE PLACE AND OBSERVATION TRAIL. 592.68 FT.  
 BM B AN "C" CUT ON THE EAST MEDIAN NOSE DISCOVERY BOULEVARD +/- 90 FEET WEST OF THE INTERSECTION OF DISCOVERY BOULEVARD AND F.M. 549. 598.20 FT.



PREPARED BY:  
**WIER & ASSOCIATES, INC.**  
 ENGINEERS SURVEYORS LAND PLANNERS  
 701 HIGHLANDER BLVD., SUITE 300 ARLINGTON, TEXAS 76015 METRO (817)467-7700  
 6849 ELM STREET FRISCO, TEXAS 75034 METRO (214)387-8000  
 Texas Firm Registration No. F-2776 www.WierAssociates.com



ROCKWALL TECHNOLOGY PARK  
 PHASE I  
 ROCKWALL, TEXAS

DRAINAGE AREA MAP



COPYRIGHT ©  
 WIER & ASSOCIATES, INC.  
 LAST SHEET EDIT  
 DATE 10-12-2009  
 WA# 08037  
**SHEET NO. D101**

\* SEE REFERENCE SHEET RIO1 FOR ORIGINAL DRAINAGE AREAS

ALLOWABLE DISCHARGE FROM SITE TO EXISTING SYSTEM WITHIN SCIENCE PL. 17.8cfs

3-25-09 REVISED SD ALIGNMENT

**RECORD DRAWING**

TIME: 9:56 FILE: DAMAP-08037.dwg